

38 MAIN STREET



CONCEPTUAL RENDERING

SPACE DETAILS

LOCATION

East block between Post Road East and Elm Street

APPROXIMATE SIZE

Ground Floor	6,170 SF*
Second Floor	4,423 SF*
Outdoor Patio	1,223 SF
Total	11,816 SF

*Divisible

POSSESSION

Fourth Quarter 2019

TERM

Long term

FRONTAGE

31 FT 10 IN on Main Street

SITE STATUS

Under construction

NEIGHBORS

Peloton, Anthropologie, BHLDN, Serena & Lily, J.Crew, Savannah Bee Co., Aux Delices, Theory, Madewell, Patagonia, Spotted Horse Tavern, lululemon athletica and Vineyard Vines

COMMENTS

Located on the 50-yard line of Downtown Westport retail

Adjacent to Bedford Square

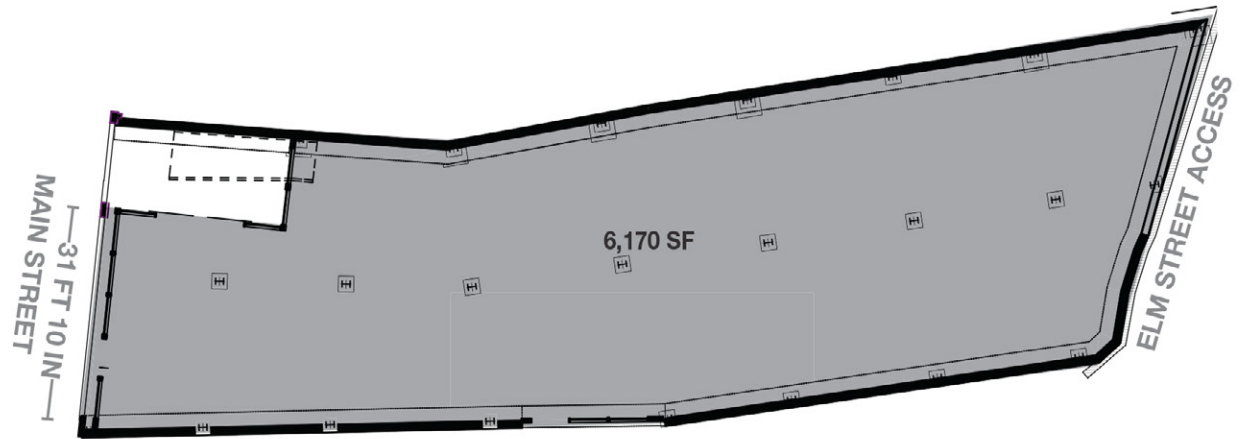
Additional parking is being added in rear of space

At grade entry to Second Floor via Elm Street

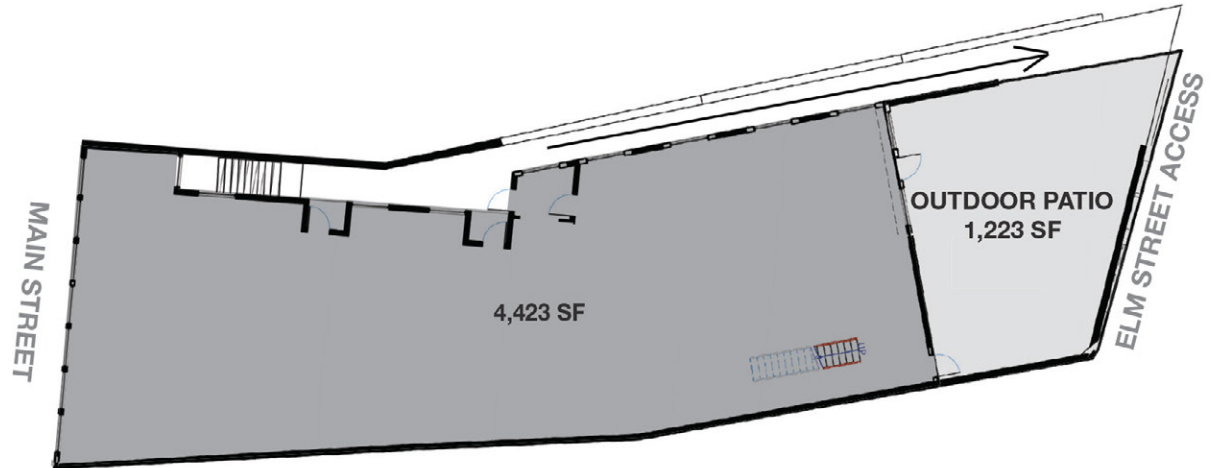
New construction, including new storefront

Food uses welcome

GROUND FLOOR

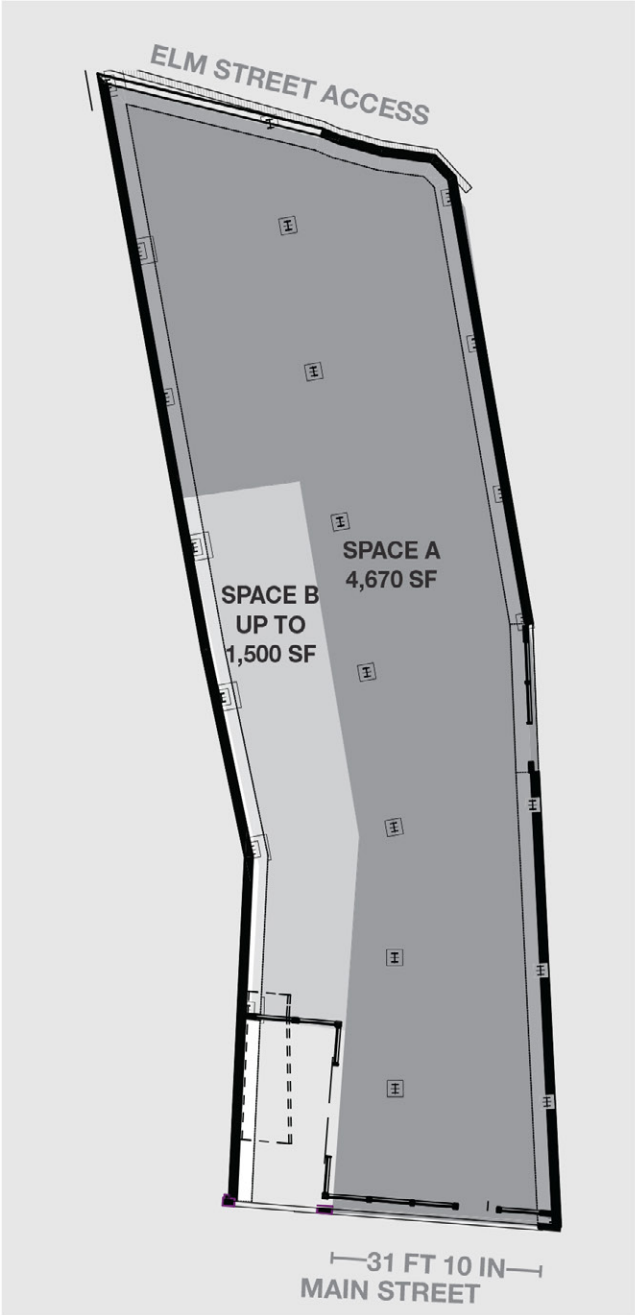


SECOND FLOOR

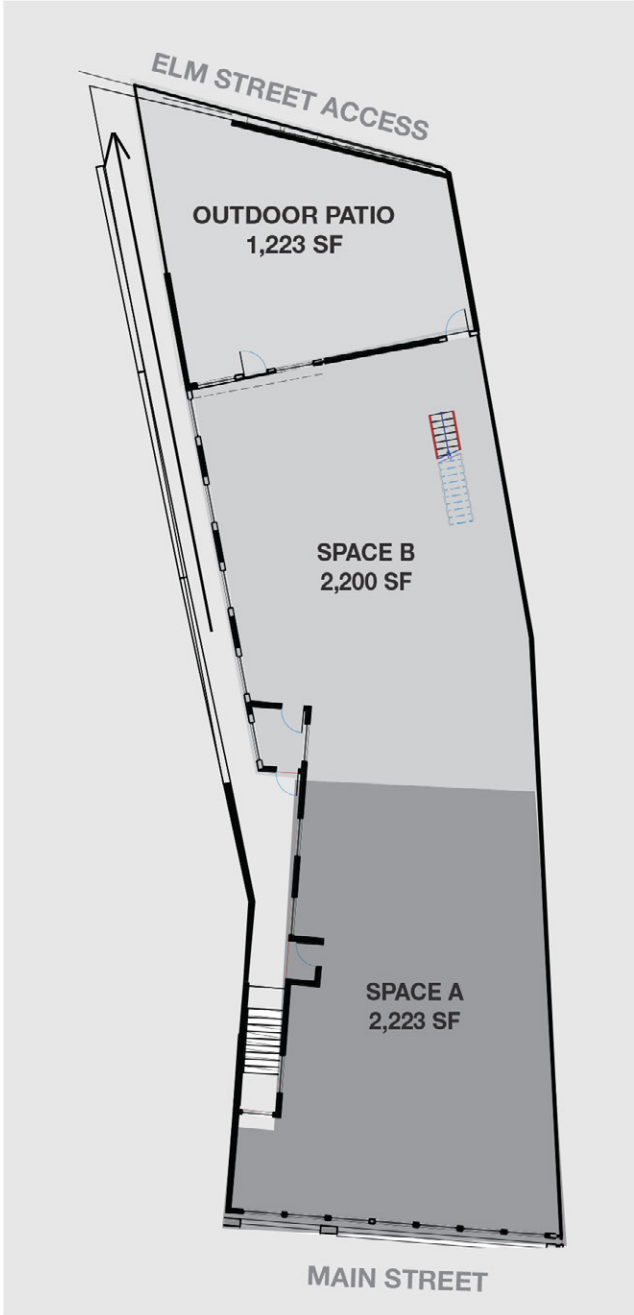


DIVISION PLANS

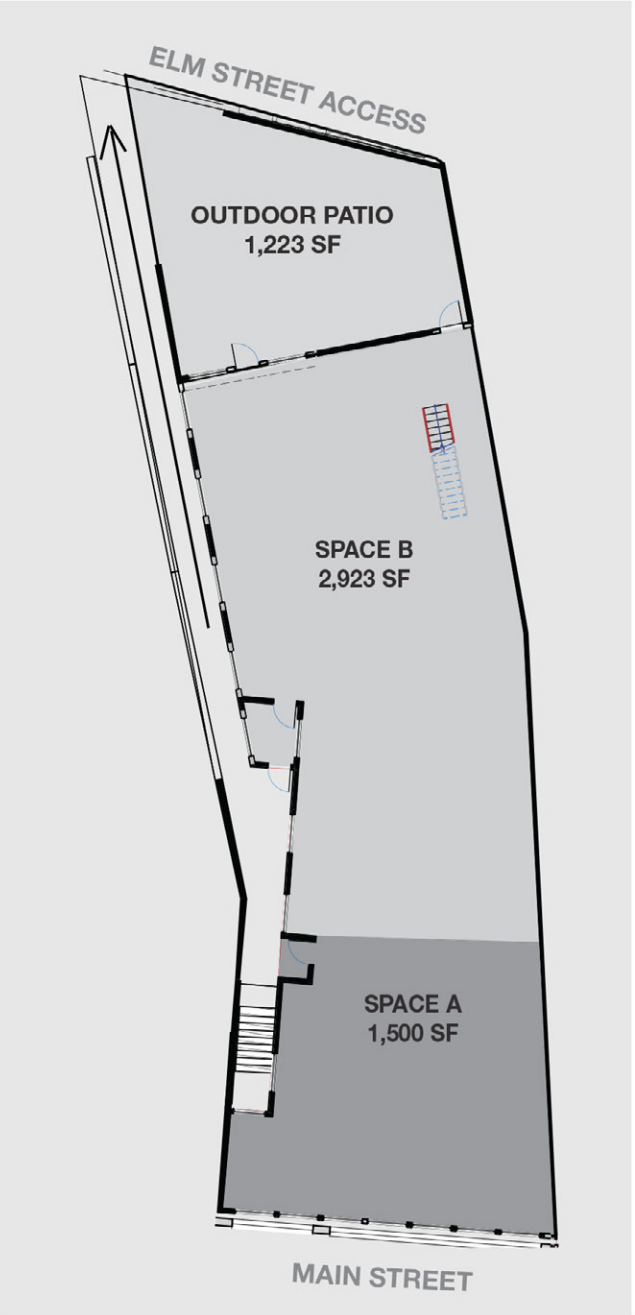
GROUND FLOOR



SECOND FLOOR - OPTION 1



SECOND FLOOR - OPTION 2



AREA NEIGHBORS



ALTERNATIVE VIEW



AERIAL



