

2,350-14,457 SF Available

- Drive thru available
- Area retailers include: TJ Maxx, Stop & Shop, Target, Kohl's, Dick's Sporting Goods, and The Home Depot
- Signalized Access

2019 DEMOGRAPHICS	1 MILE	3 MILE	5 MILE
Population	3,217	31,192	95,735
Med HH Income	\$87,966	\$77,855	\$70,466



Jim Bagley

617.239.3642
jbagley@atlanticretail.com

Rachael Willard

617.239.3603
rwillard@atlanticretail.com



SMITHFIELD, RI

473 Putnam Pike

SITE PLAN

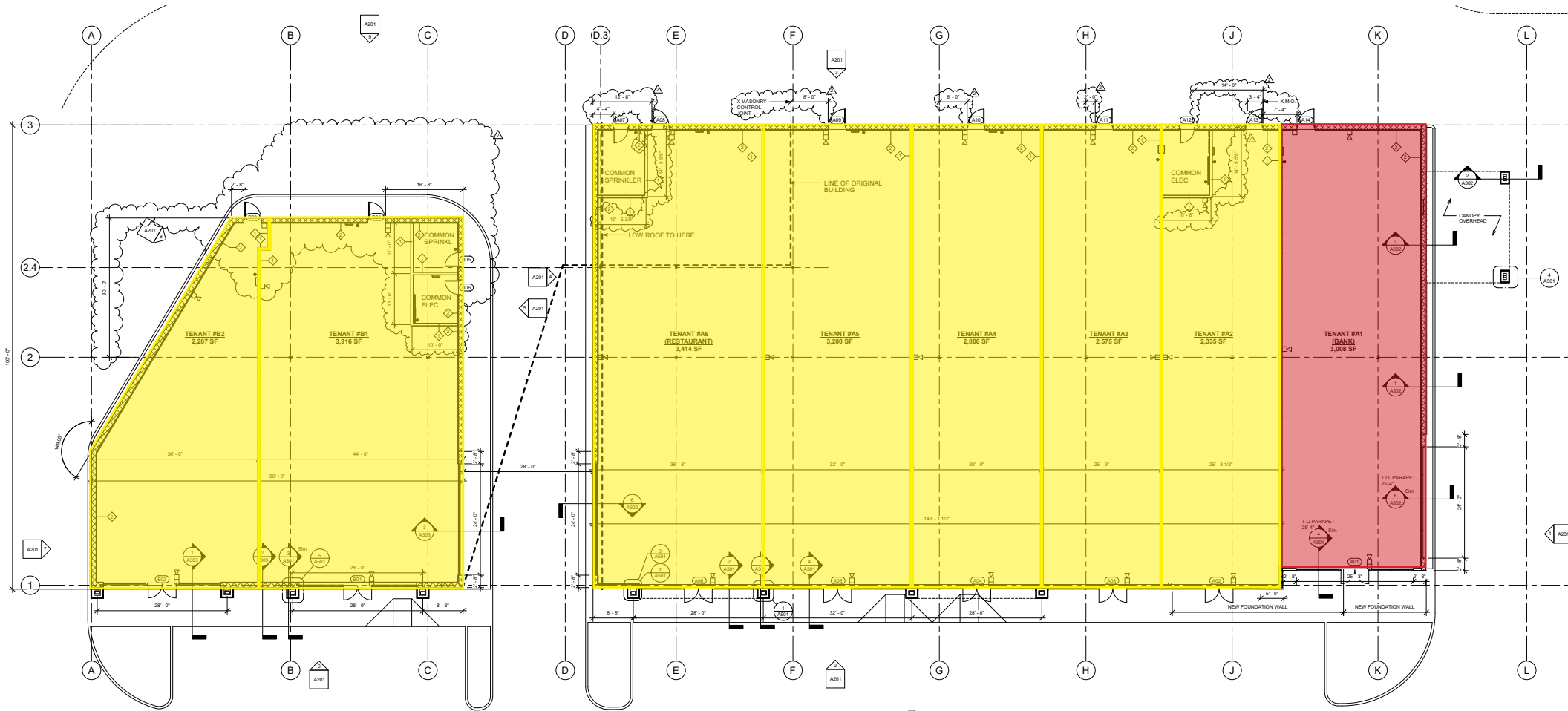
Jim Bagley

617.239.3632
jbagley@atlanticretail.com

Rachael Willard

617.239.3603
rwillard@atlanticretail.com

ATLANTICRETAIL.COM



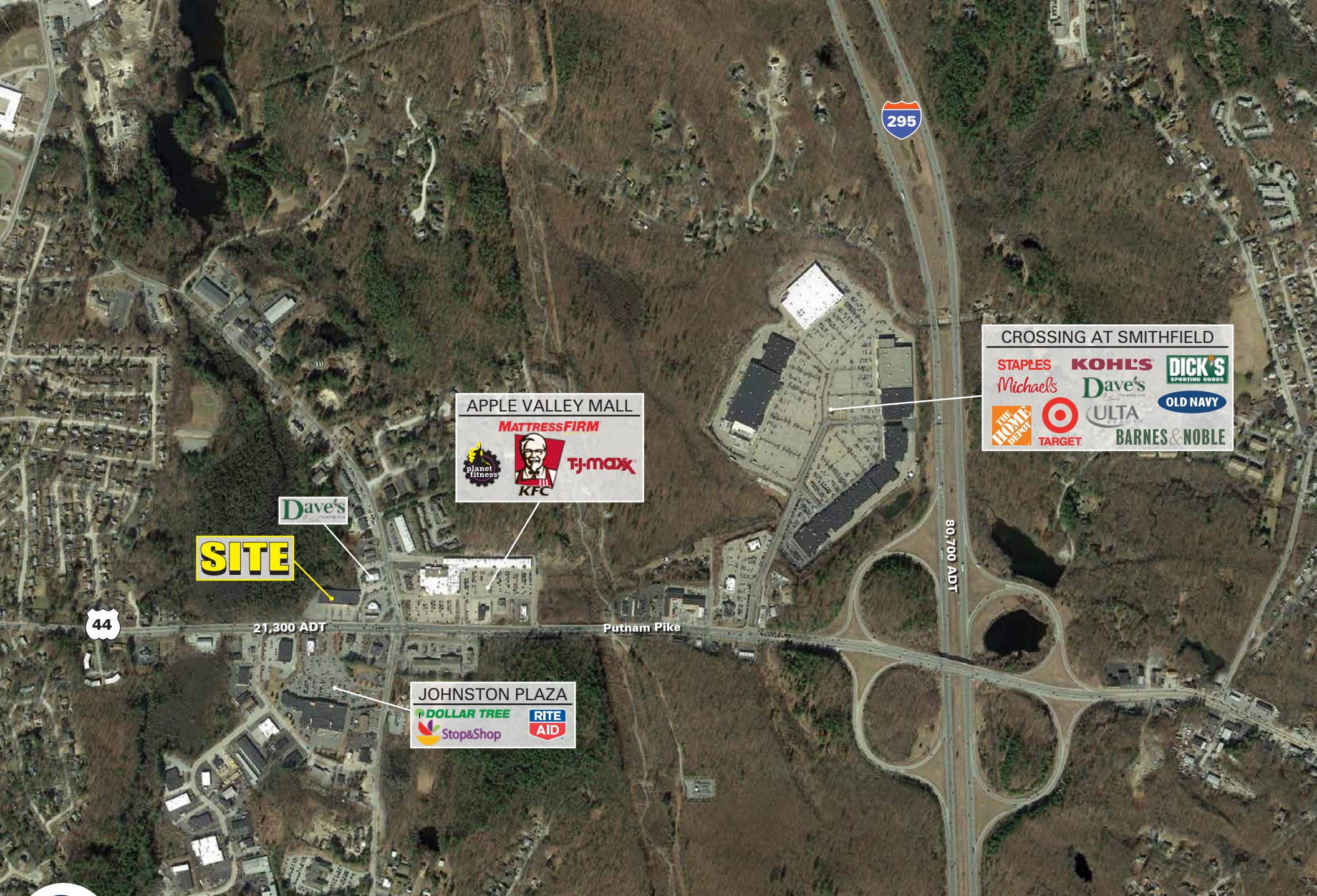
SMITHFIELD, RI
 473 Putnam Pike

FLOOR PLAN

Jim Bagley
 617.239.3632
 jbagley@atlanticretail.com

Rachael Willard
 617.239.3603
 rwillard@atlanticretail.com

ATLANTICRETAIL.COM



SITE

APPLE VALLEY MALL

MATTRESS FIRM

Planet Fitness

KFC

T.J. MAXX

Dave's

JOHNSTON PLAZA

DOLLAR TREE

Stop & Shop

RITE AID

CROSSING AT SMITHFIELD

STAPLES

Michael's

KOHL'S

Dave's

DICK'S SPORTING GOODS

OLD NAVY

THE HOME DEPOT

TARGET

ULTA

BARNES & NOBLE

44

21,300 ADT

Putnam Pike

80,700 ADT

295



SMITHFIELD, RI
473 Putnam Pike

Jim Bagley
617.239.3632
jbagley@atlanticretail.com

Rachael Willard
617.239.3603
rwillard@atlanticretail.com



SMITHFIELD, RI
473 Putnam Pike

RENDERING

Jim Bagley

617.239.3632
jbagley@atlanticretail.com

Rachael Willard

617.239.3603
rwillard@atlanticretail.com

ATLANTICRETAIL.COM