

CASCADE BUILDING

2316 SOUTH STATE STREET | TACOMA, WA 98405

FOR LEASE

2,640 SF
AVAILABLE

CENTRALLY LOCATED OFFICE

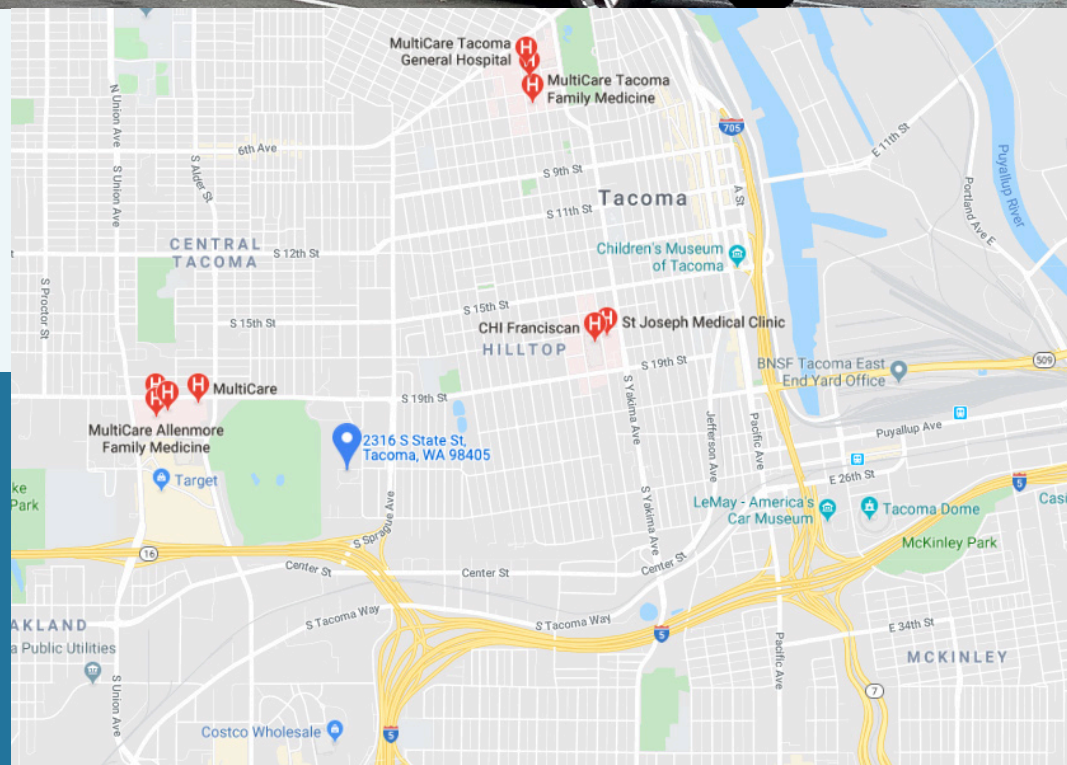


OFFICE SPACE

Available: 2,640 SF
Lease Rate: \$16/SF/YR
Lease Type: Modified Gross

LOCATION HIGHLIGHTS

- Located between Allenmore, St. Joseph's and Tacoma General hospitals
- Excellent freeway access - just minutes from Hwy-16 and I-5
- Close proximity to downtown Tacoma or Port of Tacoma



W NEIL WALTER
COMPANY

CHRIS HIGHSMITH
253 779 2402
chighsmith@neilwalter.com

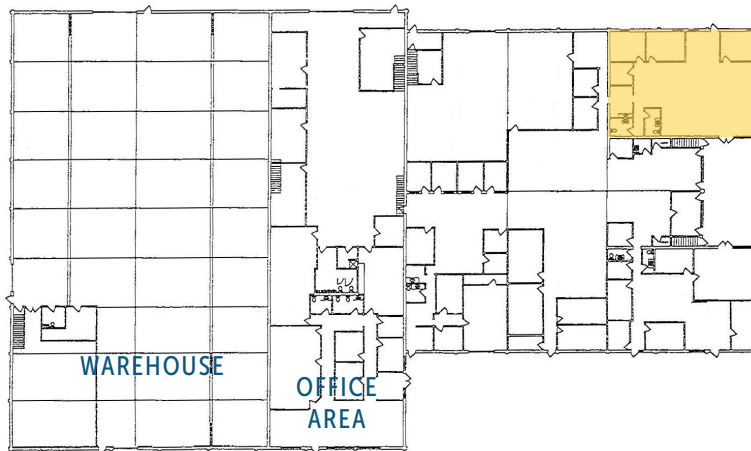
JOEL JONES
253 779 2422
jjones@neilwalter.com

CASCADE BUILDING



2316 SOUTH STATE STREET | TACOMA, WA 98405

NEIL WALTER
COMPANY



OFFICE
SPACE
2,640 SF

All square footage references are approximate. The information contained herein is from sources deemed reliable. It is provided without representation, warranty or guarantee, expressed or implied as to its accuracy. Prospective Buyer or Tenant should conduct an independent investigation of all matters.

CHRIS HIGHSMITH
253 779 2402
chighsmith@neilwalter.com

JOEL JONES
253 779 2422
jjones@neilwalter.com

1940 East D St #100
Tacoma, WA 98421

253.779.8400
www.neilwalter.com