

LAND OFFICE INDUSTRIAL RETAIL INVESTMENTS

# COAL MINE OFFICE CENTRE FOR LEASE

5935 S. Zang St., Littleton, CO 80127



www.FullerRE.com

SUITE 220  
5,497 rsf  
Office Space



<b>FOR LEASE:</b>	<b>\$19.50/SF - Full Service</b>
<b>Building:</b>	21,533± SF - Office 31,248± SF - Retail
<b>Lot:</b>	5.53± Acres
<b>YOC:</b>	2004
<b>Parking:</b>	317 spaces; 6:1,000 ratio

<b>CURRENT OFFICE AVAILABILITY</b>	
<b>Suite 220</b>	5,497± RSF, Corner unit with 11 perimeter offices, reception, conference, galley, large half-circle portico corner executive office, east views.
<b>Suite 230</b>	1,805± RSF, Open floorplan with open ceiling, west views and galley. Combinable with Suite 295.
<b>Suite 295</b>	2,296± RSF with four perimeter offices, reception, conference and galley. Combinable with Suite 230.



Quality mixed-use property with three available office suites. Excellent highway proximity at C-470 and Bowles Ave. Beautiful modern suites with great views.

Fuller Real Estate  
(303) 534-4822

[Click for  
Brokerage  
Disclosure](#)

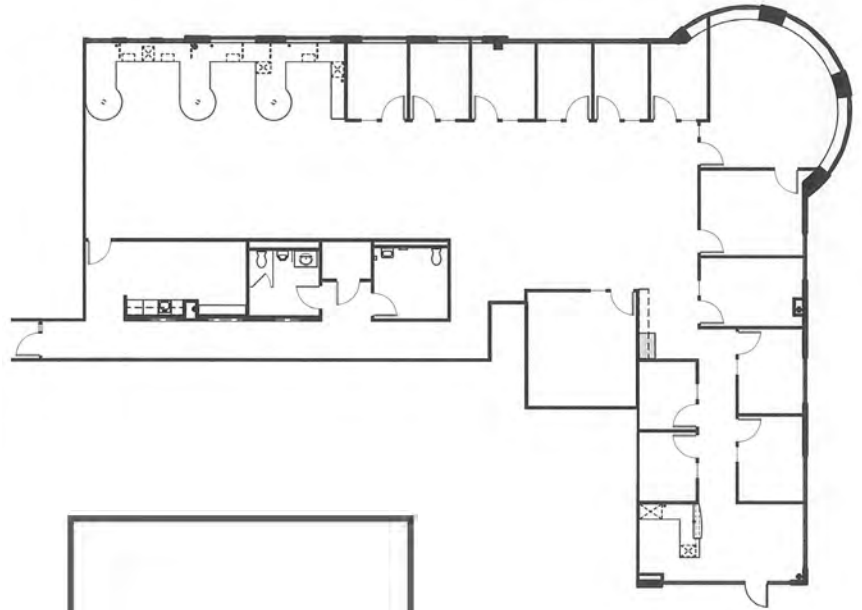
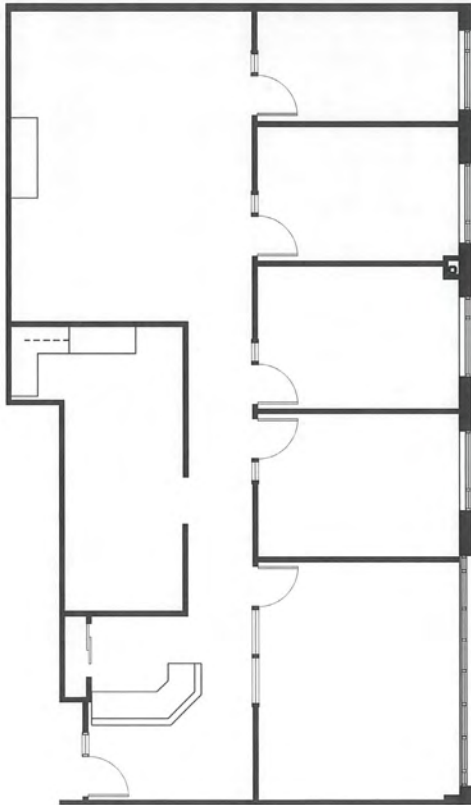
**John Becker**  
(720) 287-5414 direct  
(303) 888-7909 mobile  
JBecker@FullerRE.com

**Mike Haley**  
(720) 287-5408 direct  
(720) 309-3413 mobile  
MHaley@FullerRE.com

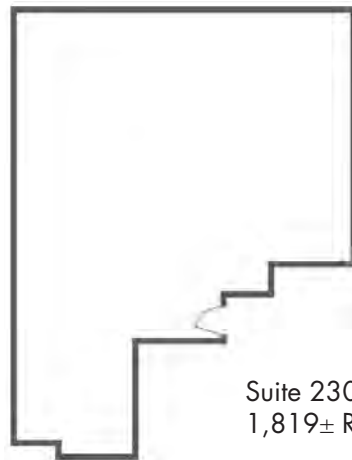


- Flying Pig Restaurant
- Panther Physical Therapy
- Vivid Salon & Boutique
- El Senor Sol
- Performance Fitness
- HD Nails
- Options Credit Union
- Antonio's Pizza
- Altitude Chiropractic
- Bowles Cafe
- Petrotek Engineering
- Financial Funding
- Sushi King Asian Bistro

Suite 295  
2,296± RSF



Suite 220  
5,497± RSF



Suite 230  
1,819± RSF

Floorplans for visual reference only.  
Dimensions and layout may vary from actual build out.