

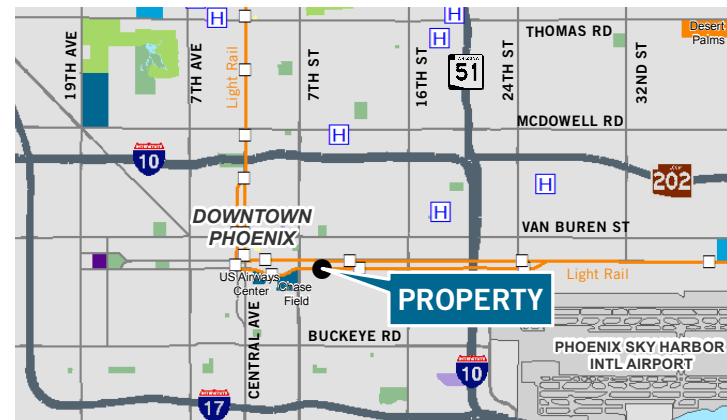
FOR SALE

919 EAST JEFFERSON Phoenix, AZ 85007



Property Features

- **Offering Price: \$1,872,000 (\$120.00 PSF)**
- ±15,600 SF freestanding building in the Downtown Phoenix Core
- Great building signage and monument signage opportunities
- Bus stop in front of the building & 1/4 mile from light rail stops
- 48 Parking Spaces (3.08/1,000 SF)
- Lot Size: ±1.00 Acres
- Power: 400 amps, 277/480v, 3 phase
- Ceiling Height: 12' beam
- Parcel Number: 116-41-061B
- Taxes: \$17,097.16 (2015)
- Walk to Chase Ball Park and numerous restaurants
- Zoned C-3, City of Phoenix



For more information:

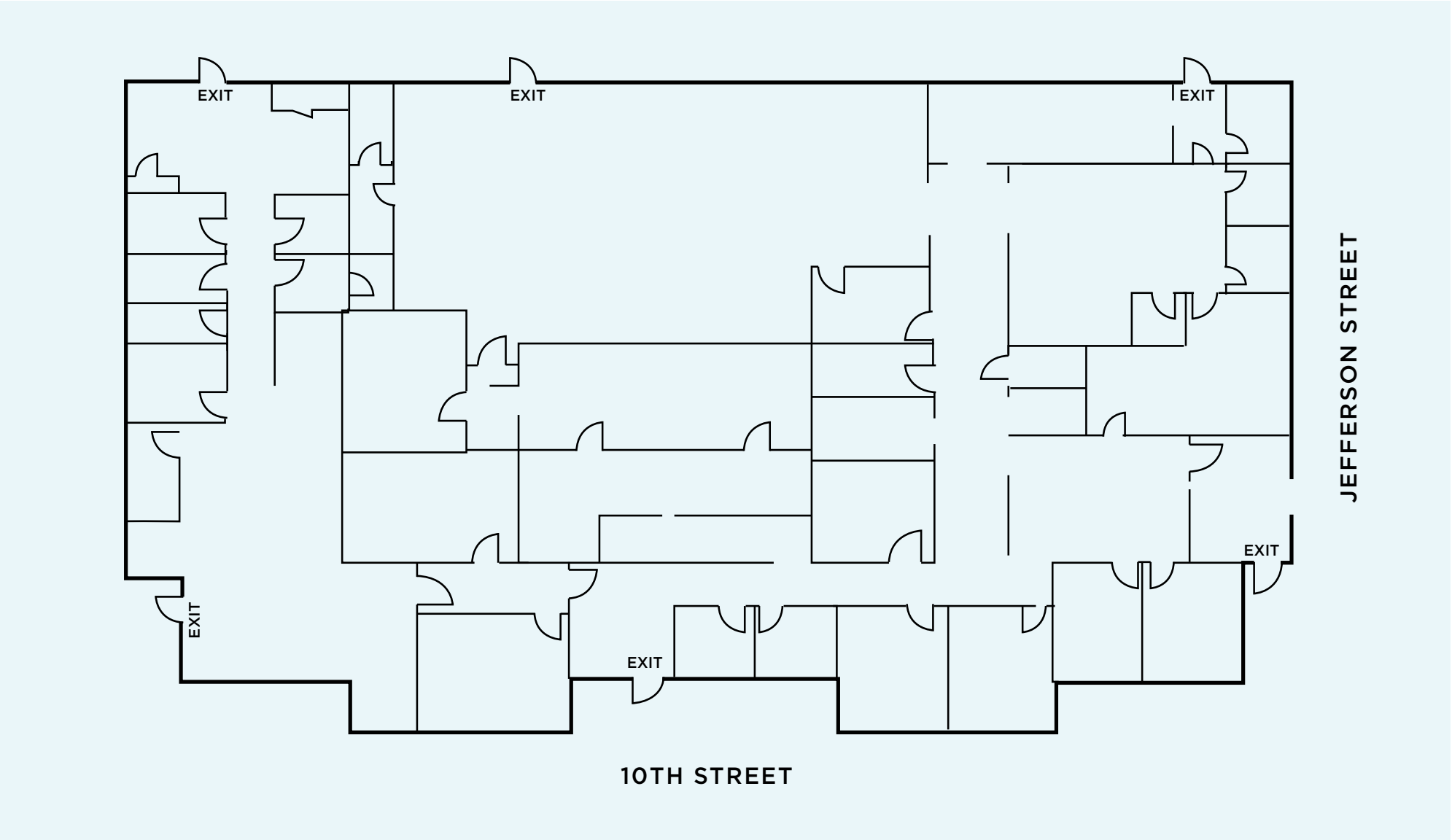
Paul Boyle
Senior Managing Director
+1 602 224 4414
paul.boyle@cushwake.com

Scott Isacksen
Associate Vice President
+1 602 224 4480
scott.isacksen@cushwake.com

2555 E. Camelback Rd, Suite 400
Phoenix, Arizona 85016
ph: +1 602 954 9000 fx: +1 602 468 8588
cushmanwakefield.com

919 EAST JEFFERSON Phoenix, AZ 85007

FOR SALE



Cushman & Wakefield Copyright 2015. No warranty or representation, express or implied, is made to the accuracy or completeness of the information contained herein, and same is submitted subject to errors, omissions, change of price, rental or other conditions, withdrawal without notice, and to any special listing conditions imposed by the property owner(s). As applicable, we make no representation as to the condition of the property (or properties) in question.

Paul E. Boyle
Senior Managing Director
+1 602 224 4414
paul.boyle@cushwake.com

Scott Isacksen
Associate Vice President
+1 602 224 4480
scott.isacksen@cushwake.com

2375 E. Camelback Rd, Suite 300
Phoenix, Arizona 85016
ph: +1 602 954 9000
fx: +1 602 468 8588
cushmanwakefield.com