

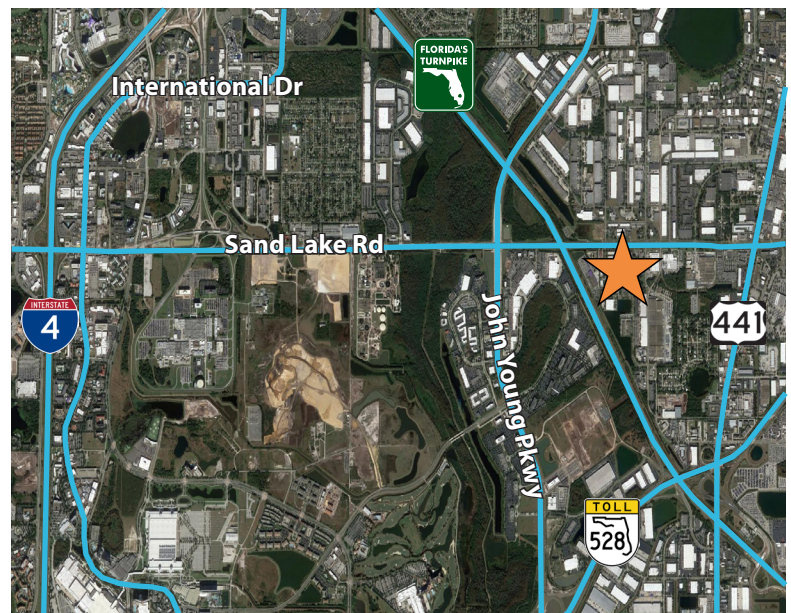


Building Features

- Dock high, rear load doors
- Sprinklered
- Up to 18' clear ceiling height
- 60'-120' truck court
- Ample parking
- Management office within close proximity
- Tremendous exposure on Sandlake Road
- Monument and building signage available

Location

- Located on Sandlake Road with immediate access to Orange Blossom Trail (US 441), John Young Parkway, the Florida Turnpike, SR 528 (Beachline), and Interstate-4.



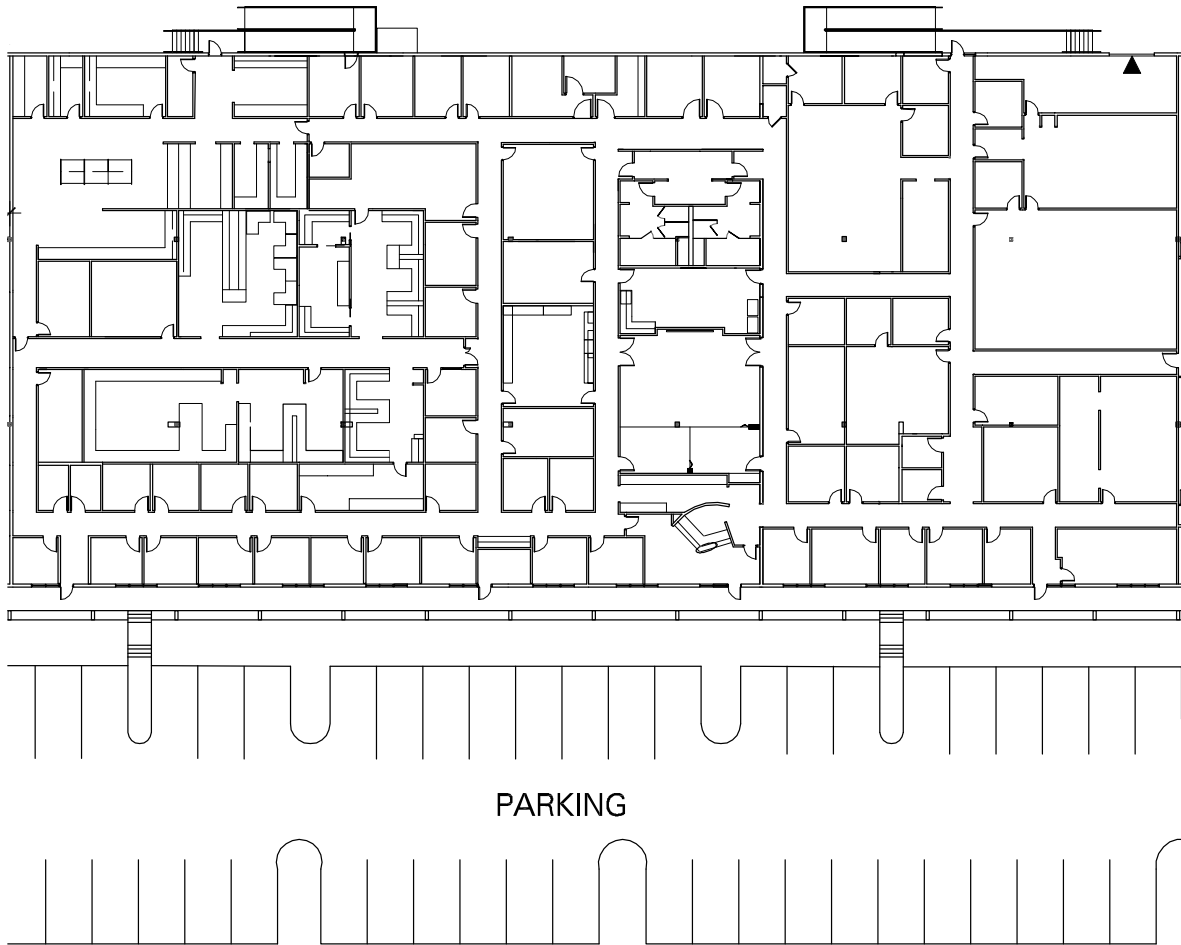
Nathan Eissler, CCIM, SIOR, Principal
D 407 440 6658
C 407 342 7494
nathan.eissler@avisonyoung.com

135 W Central Boulevard
Suite 700
Orlando, FL 32801
407 219 3500

8150 Chancellor Dr
Suite 110 - 29,722± sf

Chancellor Square / 8100-8150 Chancellor Dr |
2400 Sandlake Rd

- * Currently built-out as lab space
- * 100% under HVAC



avisonyoung.com

Nathan Eissler, CCIM, SIOR, Principal
D 407 440 6658
C 407 342 7494
nathan.eissler@avisonyoung.com

135 W Central Boulevard
Suite 700
Orlando, FL 32801
407 219 3500

