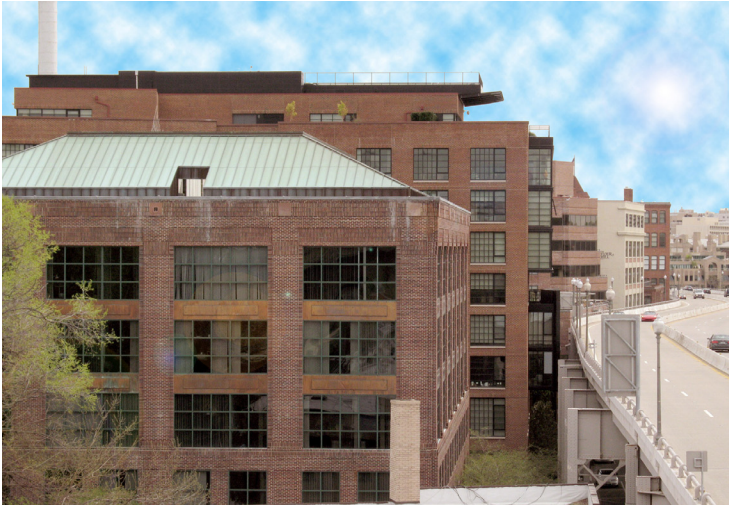




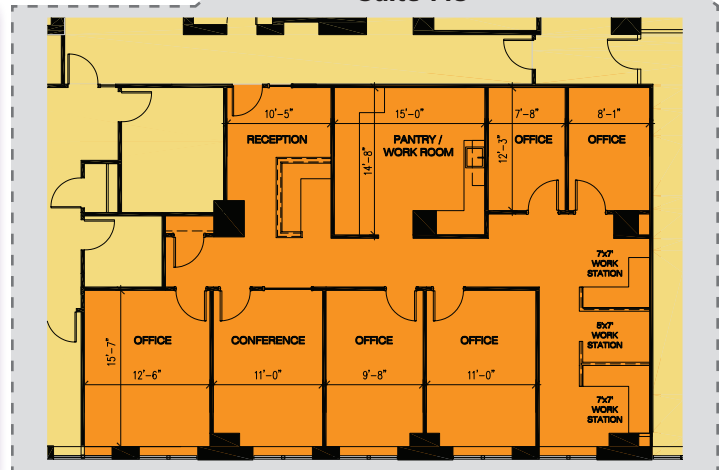
Georgetown Landing

3333 K STREET, NW | WASHINGTON, DC 20007

Rarely Available 2,202 SF Waterfront Office Space



Suite 115



Property Highlights

- Enjoy Georgetown's tranquility and amenities with quick, easy access to Downtown
- Southern Exposure suite with 5 offices overlooking the Potomac
- Engineer & Management on site
- Three (3) dedicated parking spaces
- Ample street parking
- Walk Key Bridge to Rosslyn Metro



Please Contact

Sean M. Harcourt
 240.482.3606 (direct)
 301.656.3030 (office)
 301.656.6222 (fax)
 sean@hrretail.com

Demographics (2013 Estimated)

	.25 Mile	.50 Mile	1 Mile
Population	5,683	21,425	72,959
Average Household Income	\$97,181	\$88,806	\$90,554

