

FOR LEASE

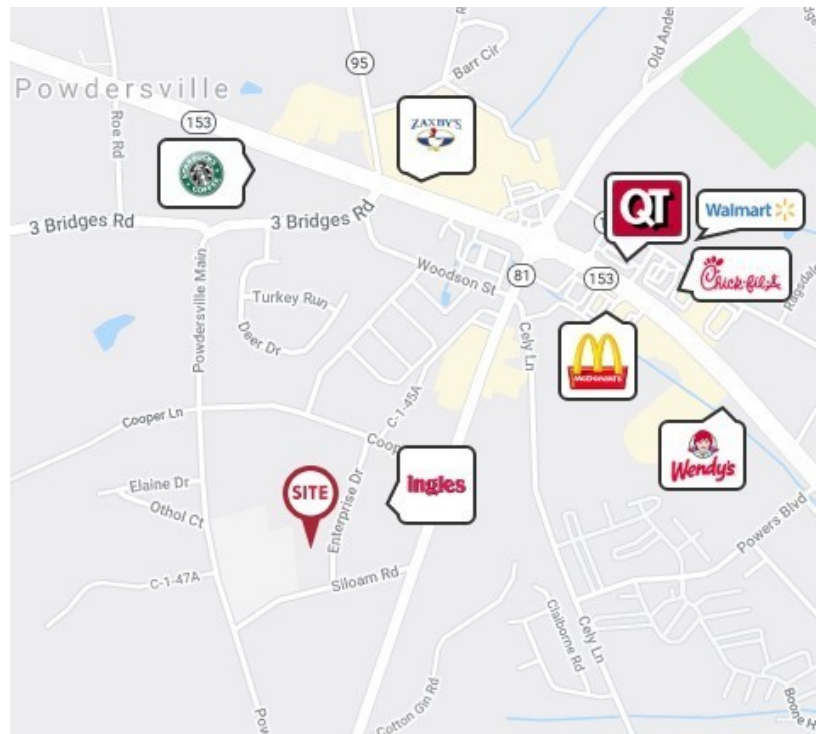
290 Enterprise Drive Easley, SC 29642

NAI Earle Furman



Office | 6,050 SF

- 1st floor - 4,965 SF
- 2nd floor - 1,085 SF
- Medical or general office use
- 9 exam rooms
- 1 procedure room
- 3 doctor's offices
- 1 lab
- Large reception area with sick & well waiting areas
- Excellent location
- Convenient to Highway 81 & 153 & I-85
- Lease rate: \$14.00/SF NNN



✉ **Keith Jones, CCIM, SIOR**
O: +1 864 232 9040
keith@naiearlefurman.com

✉ **Patrick "McNeil" Epps**
O: +1 864 232 9040 x5956
C: +1 803 473 0179
mepps@naiearlefurman.com

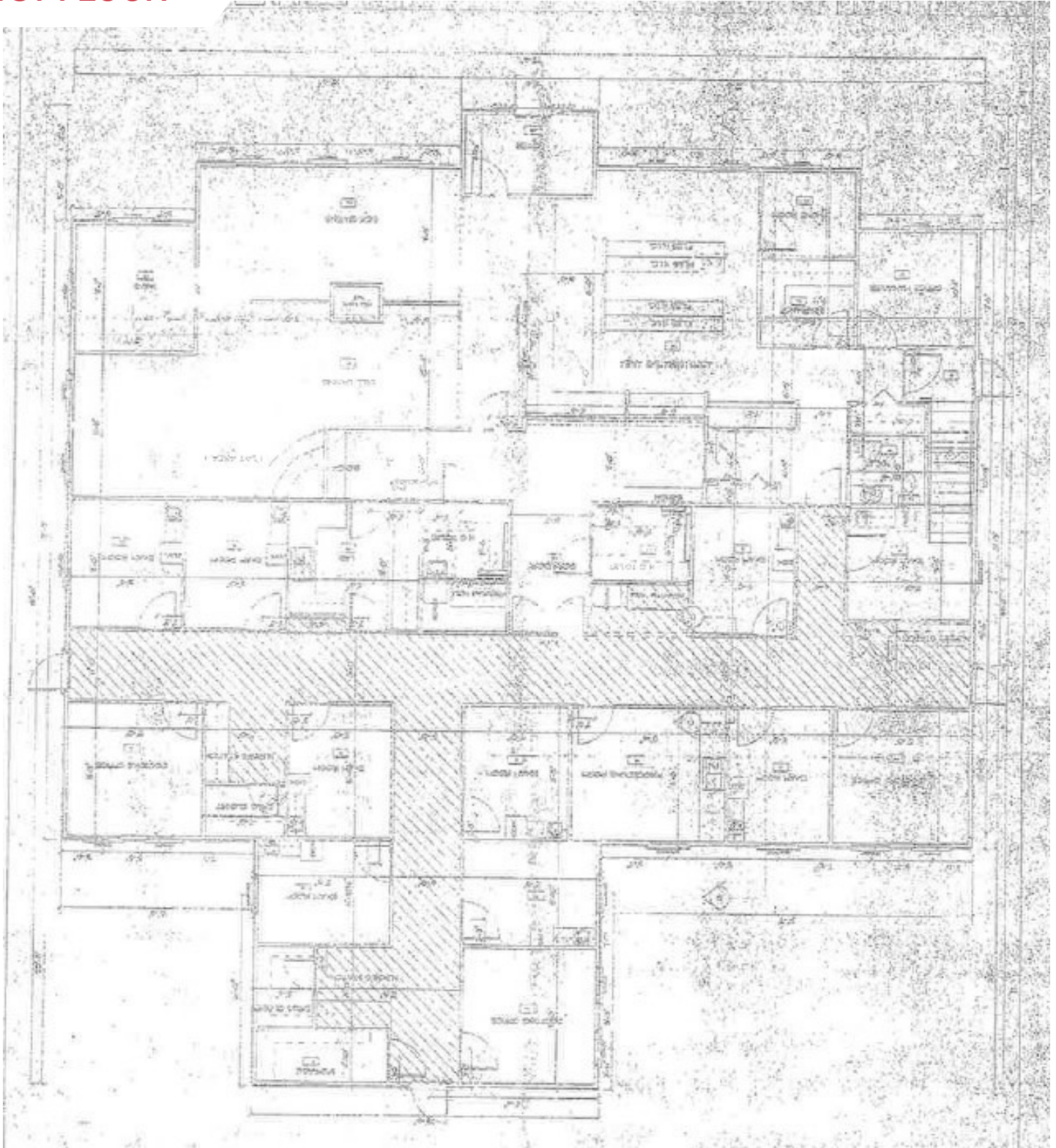
No Warranty, Or Representation, Express Or Implied, Is Made As To The Accuracy Of The Information Contained Herein, And The Same Is Submitted Subject To Errors, Omissions, Change Of Price, Rental Or Other Conditions, Prior Sale, Lease Or Financing, Or Withdrawal Without Notice And Of Any Special Listing Conditions Imposed By Our Principals. No Warranties Or Representations Are Made As To The Condition Of The Property Or Any Hazards Contained Therein Are Any To Be Implied.

📍 **101 E Washington St**
Greenville, SC 29601
naief.com

FOR LEASE

290 Enterprise Drive Easley, SC 29642

1ST FLOOR



✉ Keith Jones, CCIM, SIOR
O: +1 864 232 9040
keith@naiearlefurman.com

✉ Patrick "McNeil" Epps
O: +1 864 232 9040 x5956
C: +1 803 473 0179
mepps@naiearlefurman.com

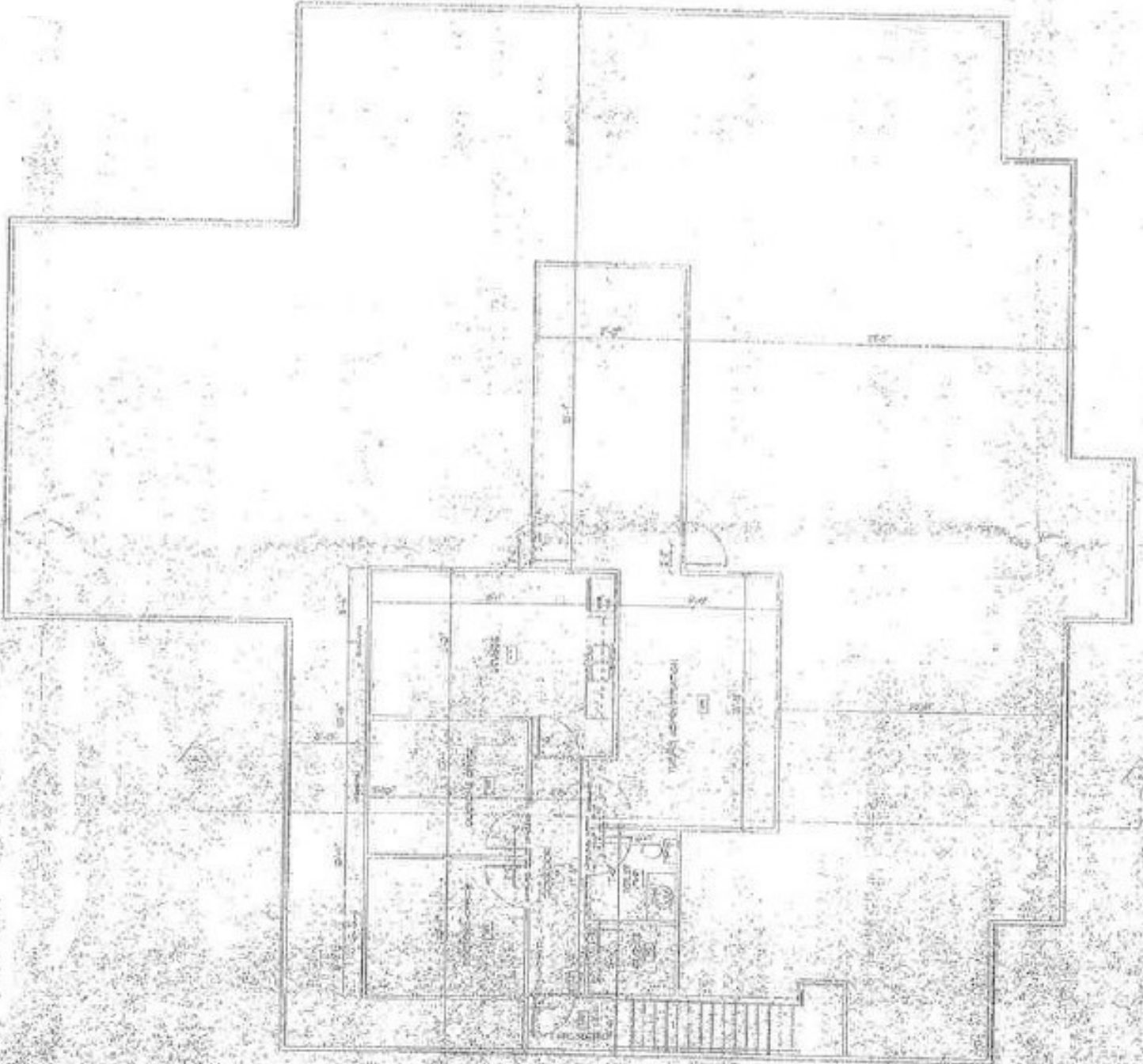
No Warranty Or Representation, Express Or Implied, Is Made As To The Accuracy Of The Information Contained Herein, And The Same Is Submitted Subject To Errors, Omissions, Change Of Price, Rental Or Other Conditions, Prior Sale, Lease Or Financing, Or Withdrawal Without Notice, And Of Any Special Listing Conditions Imposed By Our Principals. No Warranties Or Representations Are Made As To The Condition Of The Property Or Any Hazards Contained Therein Are Any To Be Implied.

NAI Earle Furman

FOR LEASE

290 Enterprise Drive Easley, SC 29642

2ND FLOOR



✉ **Keith Jones, CCIM, SIOR**
O: +1 864 232 9040
keith@naiearlefurman.com

✉ **Patrick "McNeil" Epps**
O: +1 864 232 9040 x5956
C: +1 803 473 0179
mepps@naiearlefurman.com

No Warranty Or Representation, Express Or Implied, Is Made As To The Accuracy Of The Information Contained Herein, And The Same Is Submitted Subject To Errors, Omissions, Change Of Price, Rental Or Other Conditions, Prior Sale, Lease Or Financing, Or Withdrawal Without Notice, And Of Any Special Listing Conditions Imposed By Our Principals No Warranties Or Representations Are Made As To The Condition Of The Property Or Any Hazards Contained Therein Are Any To Be Implied.

NAI Earle Furman