

# FOR SALE

**MAJOR PRICE REDUCTION**  
DEVELOPMENT PROPERTY

# RIVERTON CREEK LODGE

13112 Military Road South  
Tukwila, WA 98168



## PROPERTY FEATURES

- \$1,500,000 Offering Price
- **SHORT SALE – BANK APPROVAL**
- 10.87 Acres Total, #473,693 SF
- 4.5 Acres, Buildable Land
- Zoning MDR
- Prior Permits / Appraisals Available
- Land Surveys Completed
- Territorial View Cascade Mountains
- Adjacent to Highline Medical Center
- 5 Minutes to SeaTac Airport
- Minutes to Hwy 99 & Train Station

## DEVELOPMENT POSSIBILITIES

- Multi Family Complex
- Approved for 145 Unit Assisted Living
- Town Homes
- Approved for Retirement Community
- Residential Community
- Church



**CCM Commercial**  
Commercial Real Estate Services

Cal C. Mitchell

(425) 922-2886 Cell

[Cal@CCMcommercial.com](mailto:Cal@CCMcommercial.com)

• (888) 417-1792 Office

• [www.ccmcommercial.com](http://www.ccmcommercial.com)



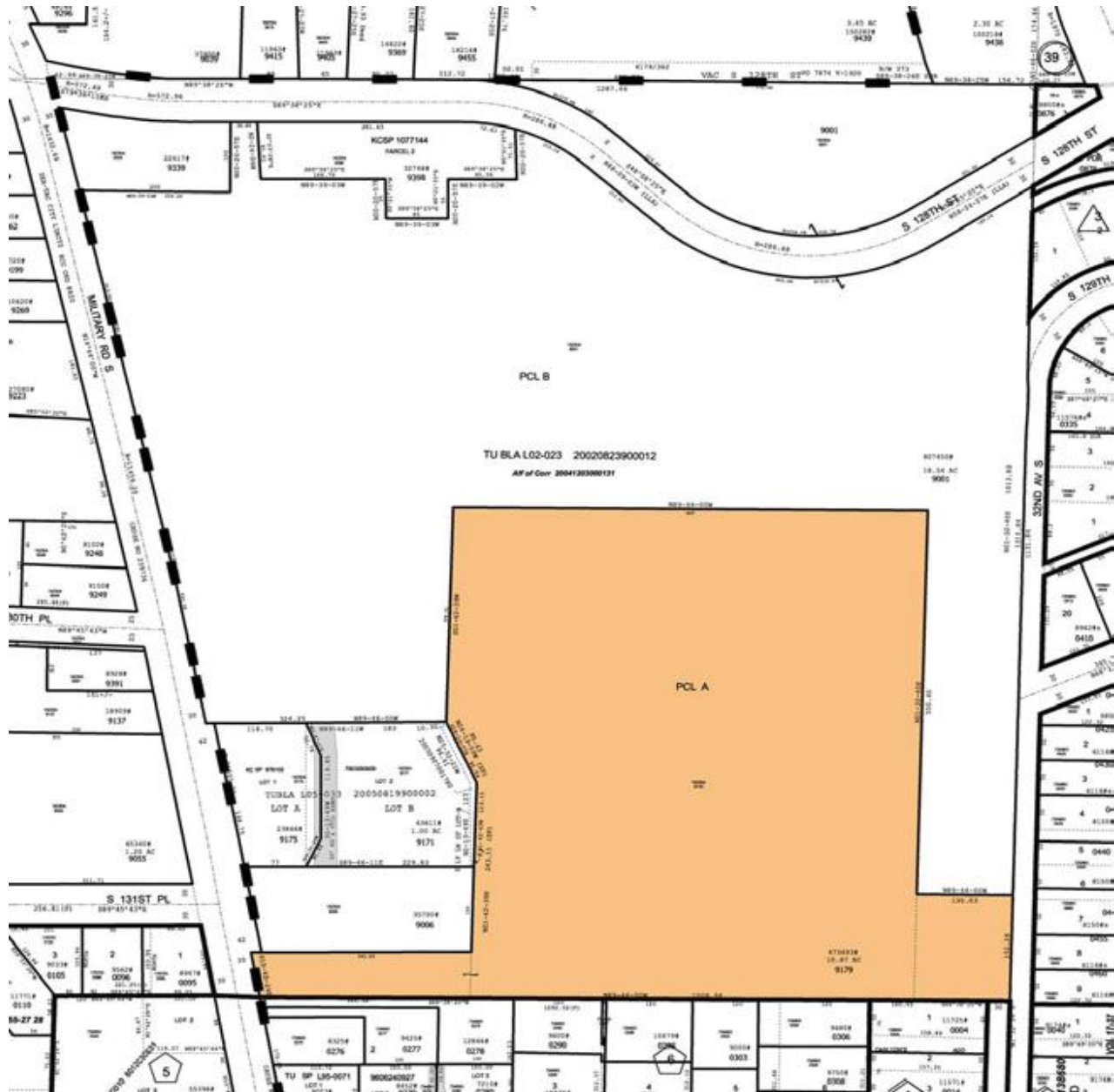
The information contained herein has been obtained from reliable sources but is not guaranteed. A prospective Buyer/ Tenant should verify each item relating to this property and all information contained herein.

# FOR SALE

**MAJOR PRICE REDUCTION**  
DEVELOPMENT PROPERTY

# RIVERTON CREEK LODGE

13112 Military Road South  
Tukwila, WA 98168



**CCM Commercial**  
Commercial Real Estate Services

Cal C. Mitchell

(425) 922-2886 Cell

[Cal@CCMcommercial.com](mailto:Cal@CCMcommercial.com)

• (888) 417-1792 Office

• [www.ccmcommercial.com](http://www.ccmcommercial.com)



The information contained herein has been obtained from reliable sources but is not guaranteed. A prospective Buyer/ Tenant should verify each item relating to this property and all information contained herein.