



CENTURY II  
1415 28th Street

Justin Lossner, CCIM, SIOR  
Managing Director  
+1 515 371 0846  
justin.lossner@am.jll.com

Kate Fanter Byus  
Vice President  
+1 515 865 8216  
kate.byus@am.jll.com



# CENTURY II



1415 28<sup>th</sup> Street  
West Des Moines, IA









## Property Information

- 99,840 SF Class A office space
- 4-story building located between Westown Parkway and I-235, with prime interstate visibility
- Area amenities include restaurants, retail, banking and hotels
- Conference room
- Showers/locker room

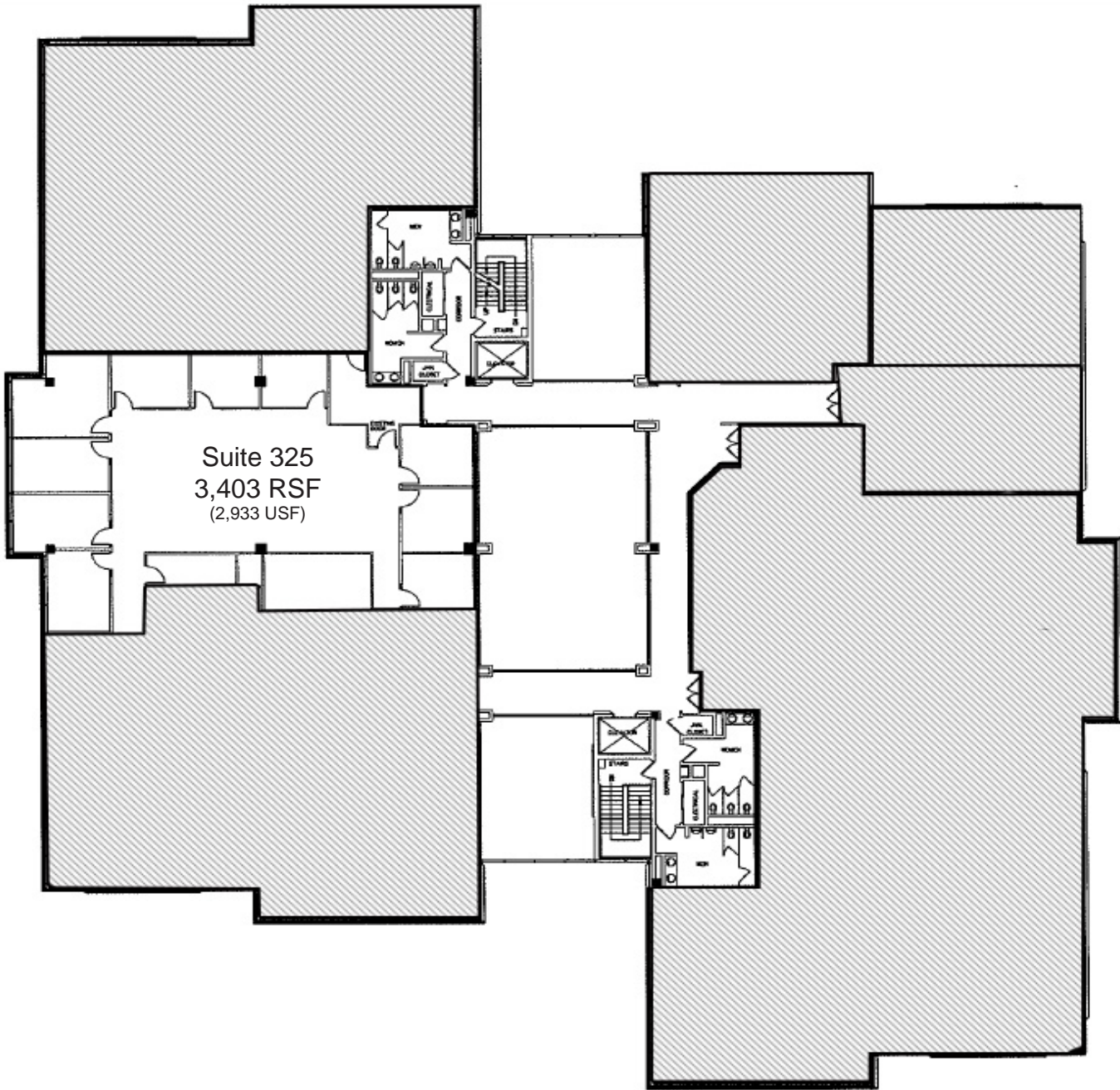
## Terms

- \$10.00/SF NNN
- OPEX available upon request
- 5-year term preferred

# THIRD FLOOR

## Availability:

- Suite 325 - 3,403 RSF (2,933 USF)







# CONFERENCE FACILITIES

- On-site conference room available at no charge to tenants
- Simpson College offers conference room and computer lab rental option for larger meetings and events





# LOCATION





5 minute drive time

# CONTACT

For leasing information, contact:



Justin Lossner, CCIM, SIOR  
Managing Director  
+1 515 371 0846  
justin.lossner@am.jll.com

Kate Fanter Byus  
Vice President  
+1 515 865 8216  
kate.byus@am.jll.com

Owned by:



Managed by:



The information contained herein has been given to us by the owner of the property or other sources we deem reliable. We have no reason to doubt its accuracy, but we do not guarantee it. All information should be verified prior to purchase or lease. Jones Lang LaSalle Brokerage, Inc. is a licensed broker in the State of Iowa.