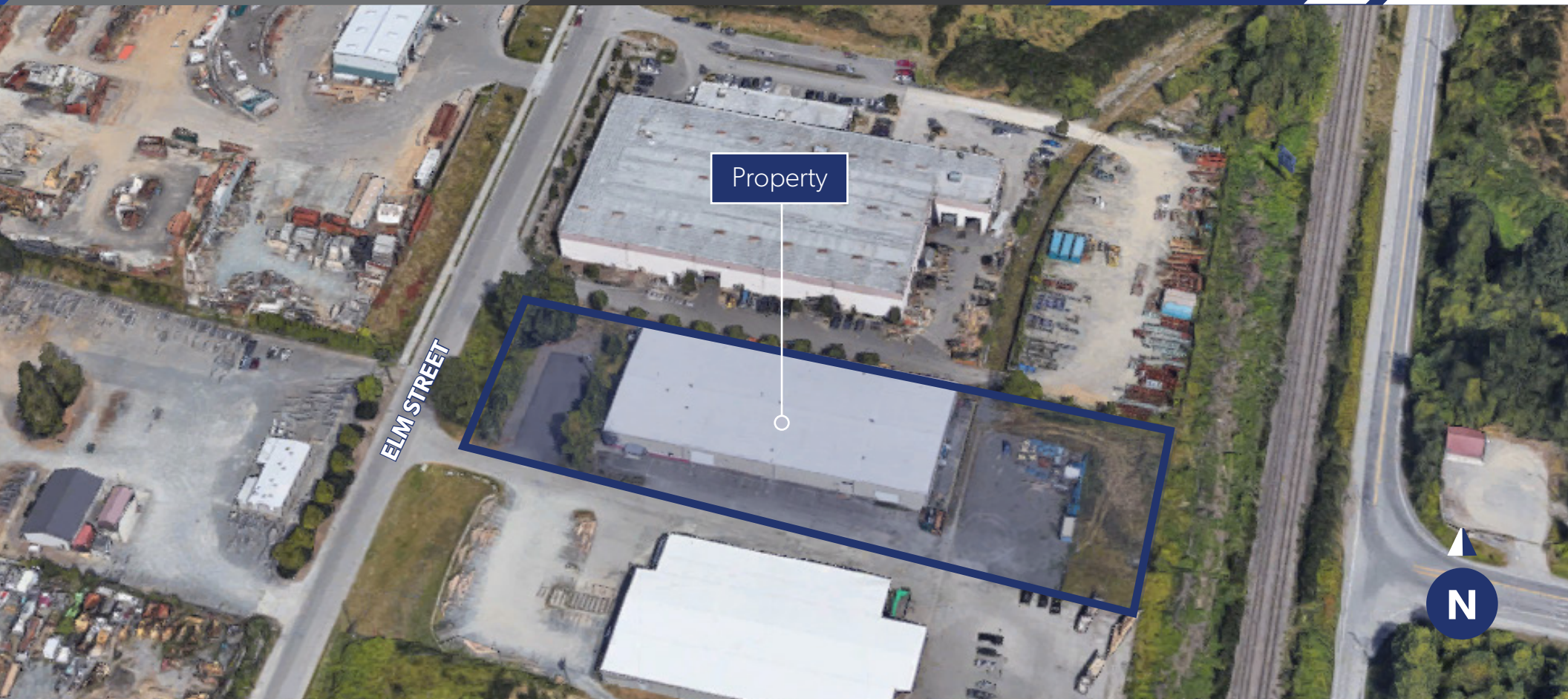


21415 87th Avenue South East
Woodinville, WA 98072

FOR SUBLEASE
30,872 SF



THE ANDOVER
COMPANY, INC.

CORFAC INTERNATIONAL

INCLUDES SMALL
FENCED/SECURED
YARD AREA

SHANE MAHVI
(206) 336-5338
smahvi@andoverco.com

HIGHLIGHTS

30,872 SF Total (7,962 SF of Office)

2 dock positions (dock platform)

2 grade level doors (oversized)

60'x25' column spacing

Fully sprinklered

18'-20' clear height

Fenced/secured yard included

Available 4/01/23, or potentially sooner

Sublease through 1/14/26

Please contact broker for rates

Please do not disturb Tenant, contact broker for showings

SHANE MAHVI

(206) 336-5338

smahvi@andoverco.com



SITE PLAN

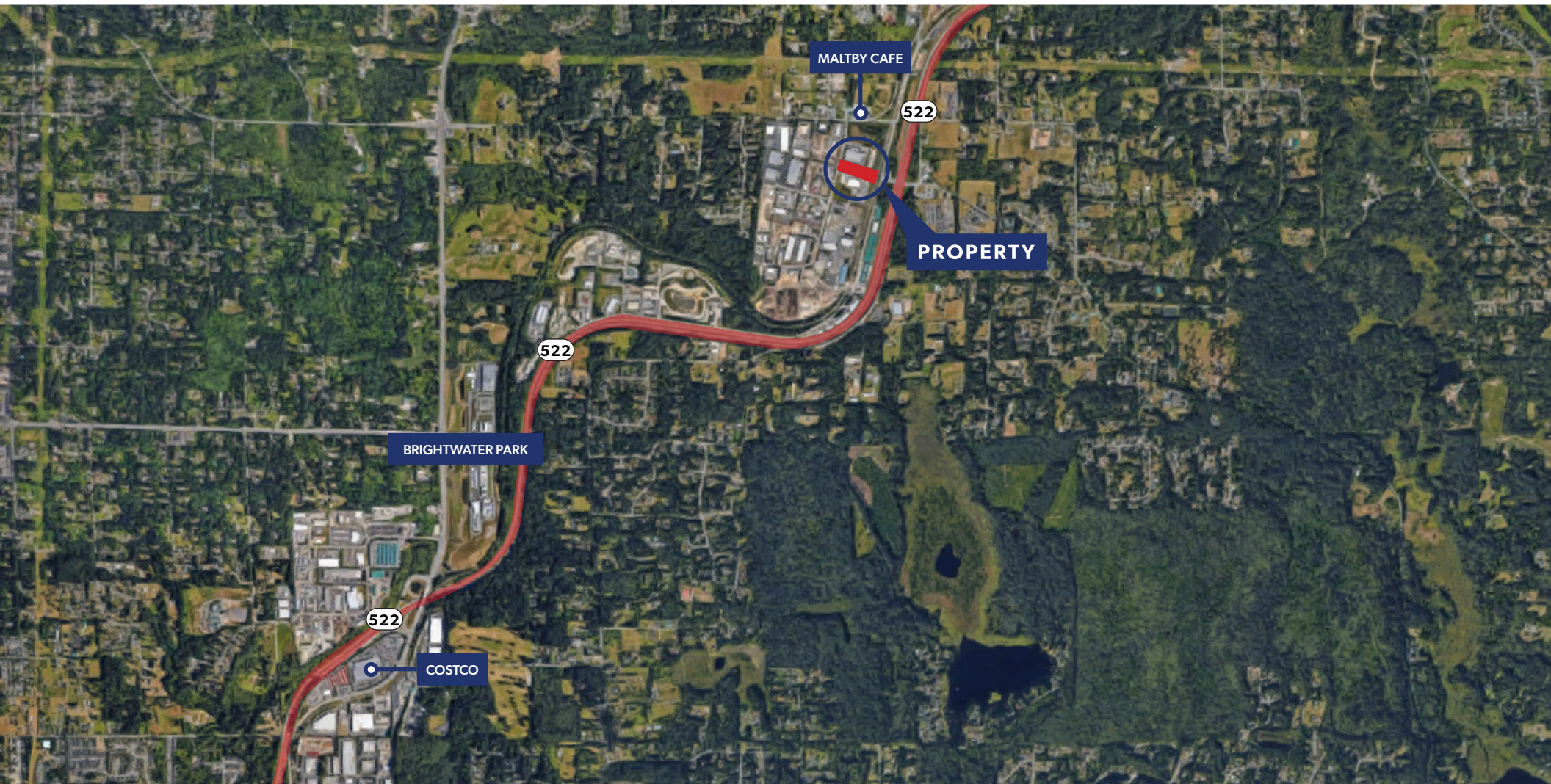


The information contained herein has been obtained from reliable sources, but is not guaranteed. A prospective buyer/tenant should verify each item relating to this property and all information contained herein.

PHOTOS



AERIAL/NEARBY AMENITIES



SHANE MAHVI

(206) 336-5338

smahvi@andoverco.com

