

4181 PIONEER DRIVE
COMMERCE TWP., MICHIGAN

HI-TECH FOR SALE
6,635 Square Feet Available



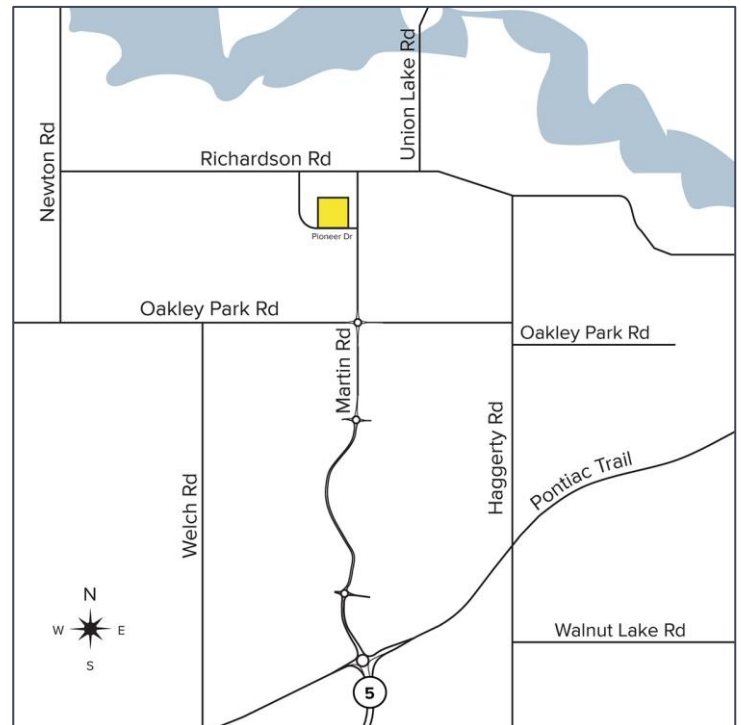
**SIGNATURE
ASSOCIATES**
KNOW SIGNATURE | KNOW RESULTS

HOMESTEAD INDUSTRIAL PARK



PROPERTY FEATURES

- 6,635 square feet available
- 3,400 square feet of office
- 16' clear height
- (2) 12x14 grade level doors
- Zoned TLM
- 12 parking spaces, more possible
- Overlooks natural wetlands/pond
- Great open floor plan with open area/showroom and executive offices, fully furnished
- Building has been completely upgraded with LED lights, new kitchen, epoxy floor, new furnace and fire suppression system
- Sale Price: \$995,000 (\$149.96/sq.ft.)



For more information, please contact:

JEFF LEMANSKI
(248) 359 0641
jlemanski@signatureassociates.com

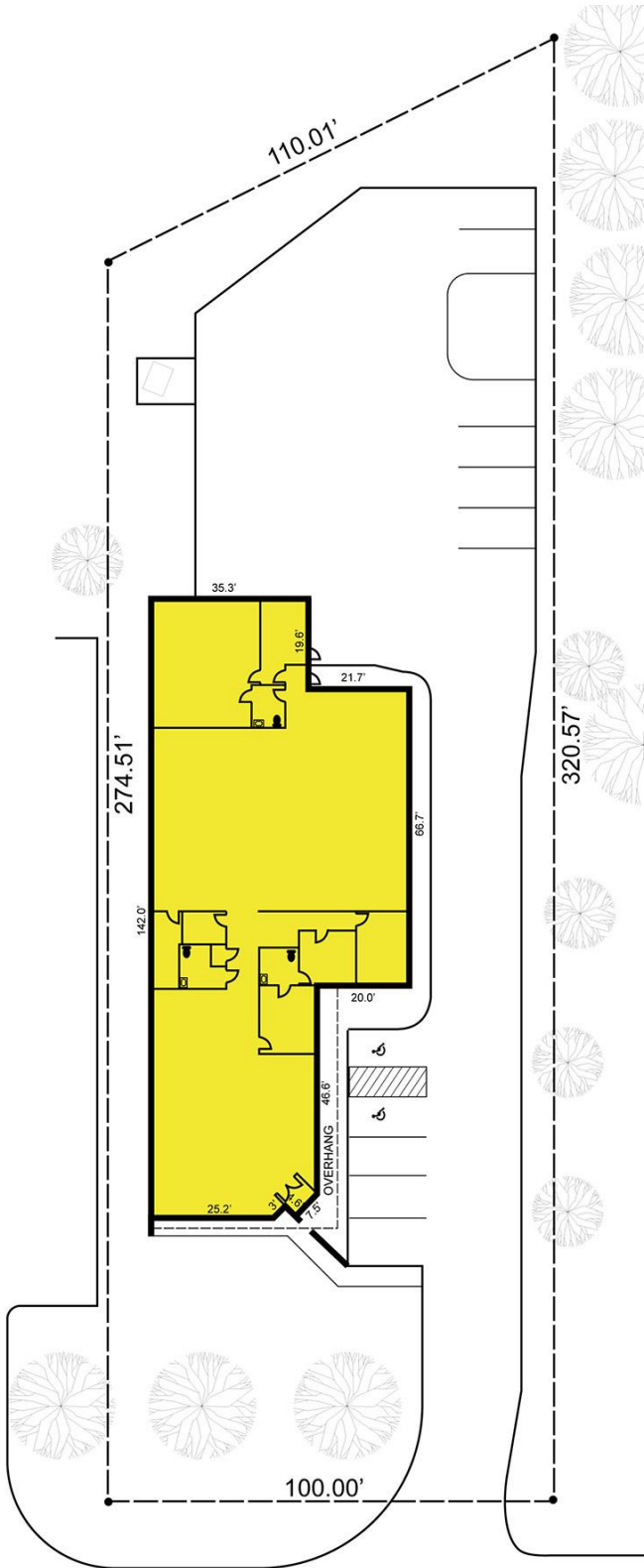
SIGNATURE ASSOCIATES
One Towne Square, Suite 1200
Southfield, MI 48076
www.signatureassociates.com

4181 Pioneer Drive – Commerce Twp., Michigan

Hi-Tech For Sale

6,635
Square Feet
AVAILABLE

Site Plan



For more information, please contact:
JEFF LEMANSKI
(248) 359 0641
jlemanski@signatureassociates.com

SIGNATURE ASSOCIATES
One Towne Square, Suite 1200
Southfield, MI 48076
www.signatureassociates.com

Information is subject to verification and no liability for errors or omissions is assumed. Price is subject to change and listing withdrawal.

4181 Pioneer Drive – Commerce Twp., Michigan

Hi-Tech For Sale

6,635
Square Feet
AVAILABLE

Aerial



For more information, please contact:

JEFF LEMANSKI
(248) 359 0641
jlemanski@signatureassociates.com

SIGNATURE ASSOCIATES
One Towne Square, Suite 1200
Southfield, MI 48076
www.signatureassociates.com