



2.06 Acres For Sale

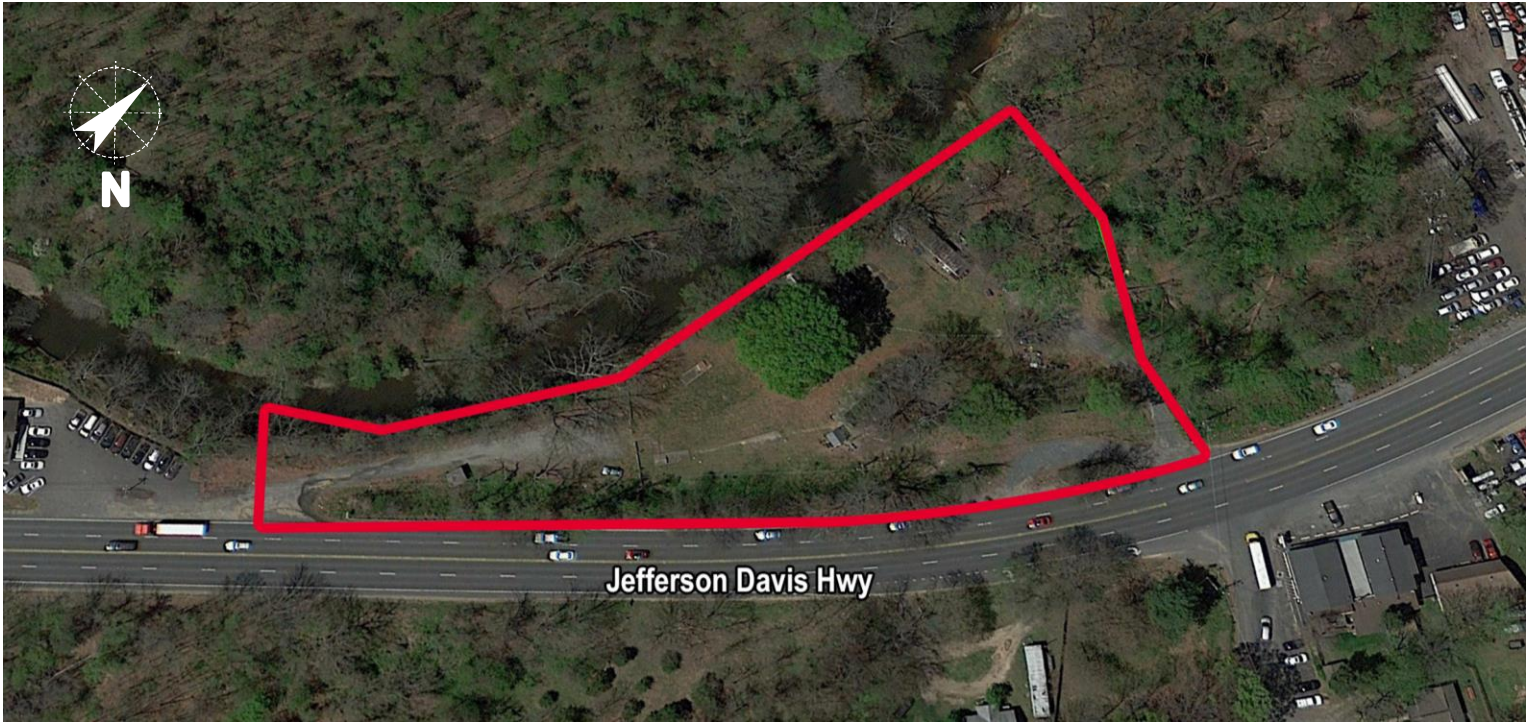
For more information, contact:

JOBY SALICETI
540 322 4142
joby.saliceti@thalhimer.com

Eagle Village
1125 Jefferson Davis Highway, Suite 350
Fredericksburg, VA 22401-8449
www.thalhimer.com

Independently Owned and Operated / A Member of the Cushman & Wakefield Alliance

Cushman & Wakefield | Thalhimer © 2015. No warranty or representation, express or implied, is made to the accuracy or completeness of the information contained herein, and same is submitted subject to errors, omissions, change of price, rental or other conditions, withdrawal without notice, and to any special listing conditions imposed by the property owner(s). As applicable, we make no representation as to the condition of the property (or properties) in question.



Property Features

- 2.06 acres
- 637 feet of frontage on Rt. 1
- Utilities available
- Zoned R-4; currently operates as a mobile home park
- Price – negotiable
- 30,000 VPD on Jefferson Davis Highway

| Specifications | |
|----------------|-----------------------|
| Total Size | 2.06 acres |
| Asking Price | Negotiable |
| Timing | Available immediately |
| Zoning | R4 |

| Demographics | 1 Mile | 3 Miles | 5 Miles |
|--------------------|-----------------|-----------|-----------|
| | Population 2016 | 9,895 | 40,070 |
| No. of Households | 3,383 | 13,234 | 21,851 |
| Avg. HH Income | \$105,659 | \$115,745 | \$121,434 |
| Daytime Population | 1,550 | 10,326 | 19,177 |

For more information, contact:

JOBY SALICETI
 540 322 4142
joby.saliceti@thalhimer.com

Eagle Village
 1125 Jefferson Davis Highway, Suite 350
 Fredericksburg, VA 22401-8449
www.thalhimer.com