

CEDAR HILL  
800 WEST HILL STREET, CHARLOTTE, NC 28208

FOUNDRY  
COMMERCIAL



## OFFICE SPACE FOR SUBLEASE

- Creative office space with expansive ceilings, exposed concrete, and floor-to-ceiling glass
- Located directly next to Bank of America Stadium with walkability to Third Ward amenities
- Two separate suites that can be combined to include **4,842 RSF**:
  - **Suite 101** (4,259 RSF) can accommodate up to 32 employees and contains 1 private office, 2 conference rooms, and a break galley
  - **Suite 104** (583 RSF) is a 100% open space with a break galley – perfect for startup, swing, or meeting space!
- Sublease term through 2/2020. FF&E negotiable.



For more information, please contact:

**LONDON FUNSTEN**  
704.319.5070  
london.funsten@foundrycommercial.com

**BRIAN BRTALIK**  
704.705.3866  
brian.brtalik@foundrycommercial.com

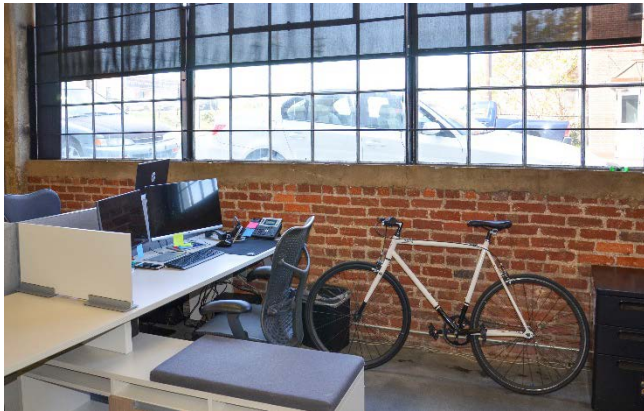
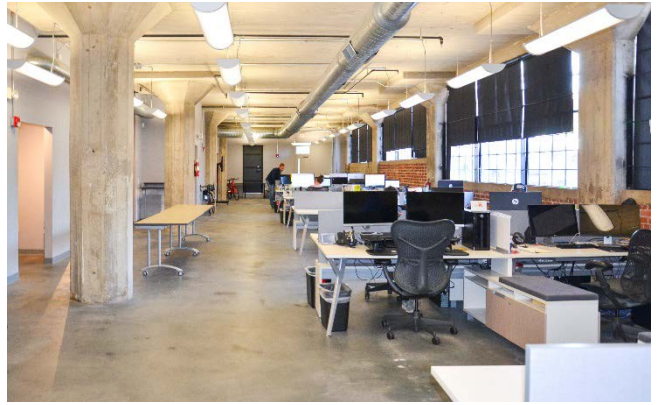
FOUNDRY  
COMMERCIAL

121 West Trade Street  
Suite 2500  
Charlotte, NC 28202

Although the information contained herein was provided by sources believed to be reliable, Foundry Commercial makes no representation, expressed or implied, as to its accuracy and said information is subject to errors, omissions or changes.

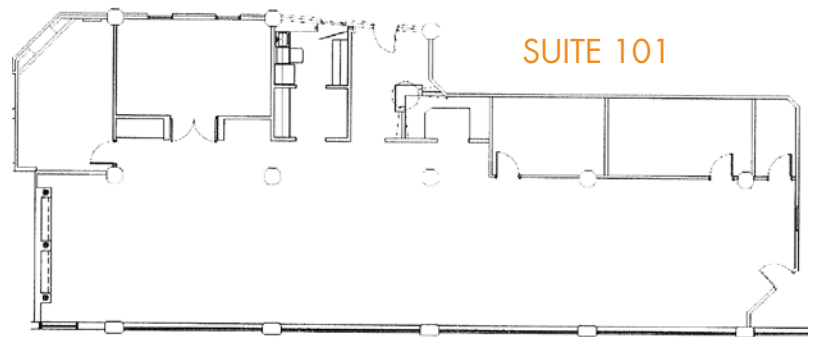
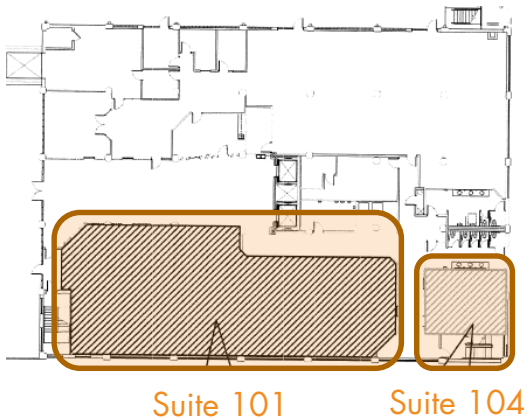
[foundrycommercial.com](http://foundrycommercial.com)

CEDAR HILL  
800 WEST HILL STREET, CHARLOTTE, NC 28208



**OFFICE SUBLEASE** | SUITE 101 - 4,259 RSF | SUITE 104 - 583 RSF

First Floor



*\*Floorplan not to scale.*

For more information, please contact:

**LONDON FUNSTEN**  
704.319.5070  
london.funsten@foundrycommercial.com

**BRIAN BRTALIK**  
704.705.3866  
brian.brtalik@foundrycommercial.com

**FOUNDRY**  
COMMERCIAL

121 West Trade Street  
Suite 2500  
Charlotte, NC 28202

Although the information contained herein was provided by sources believed to be reliable, Foundry Commercial makes no representation, expressed or implied, as to its accuracy and said information is subject to errors, omissions or changes.

[foundrycommercial.com](http://foundrycommercial.com)