

326 BLEECKER ST

SOUTHWEST CORNER OF BLEECKER & CHRISTOPHER STREETS



326
BLEECKER

RETAIL FOR LEASE
212.741.2500



KELLY GEDINSKY KGEDINSKY@SCG-RETAIL.COM
AMANDA KELLER AKELLER@SCG-RETAIL.COM

RETAIL FOR LEASE

212.741.2500



KELLY GEDINSKY KGEDINSKY@SCG-RETAIL.COM
AMANDA KELLER AKELLER@SCG-RETAIL.COM



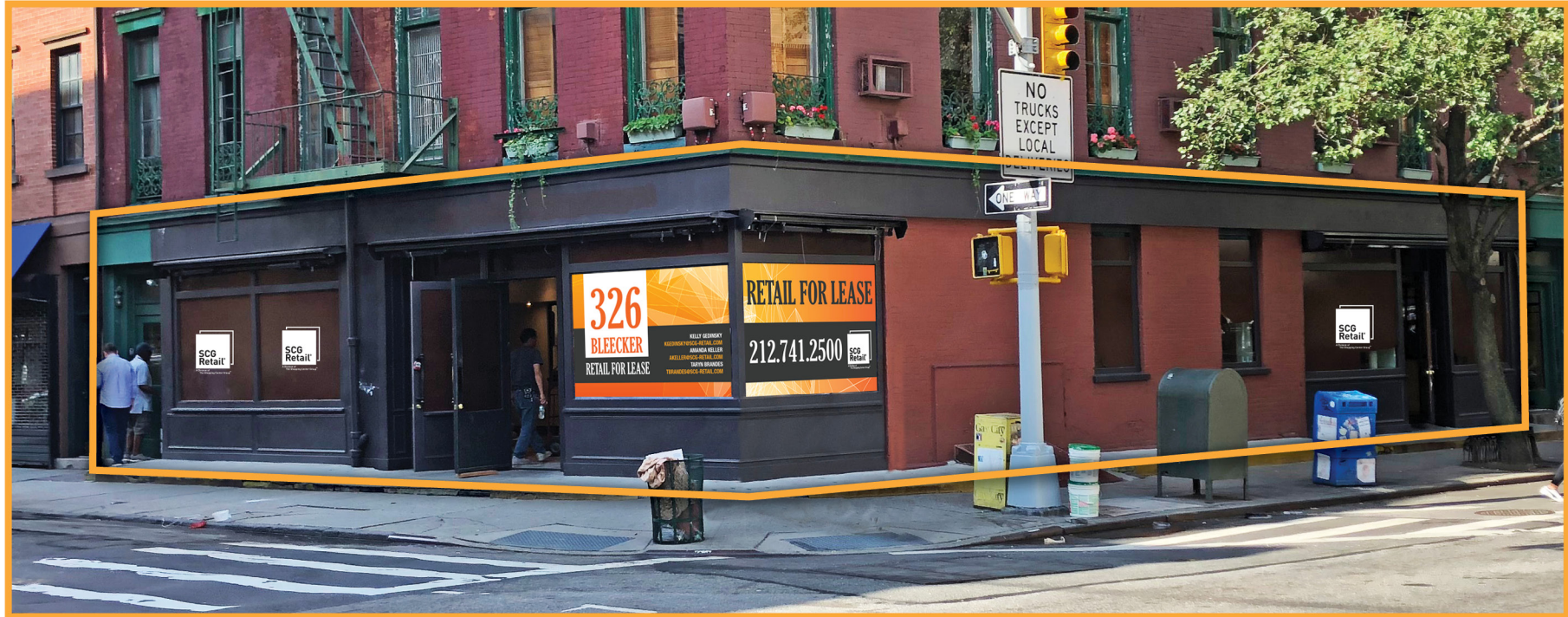
Amanda Keller
646.664.0426
AKeller@scg-retail.com

Kelly Gedinsky
646-664-0400
KGedinsky@scg-retail.com



A Division of
The Shopping Center Group™

OVERVIEW



Address: 326 Bleecker Street

Possession: Immediate

Approx. Size: 1,950 sf Ground; 1,300 sf Lower Level; 1,350 sf sub lower level

Frontage: 33' on Bleecker and 47' on Christopher Street

Location: Southwest corner of Bleecker & Christopher Street

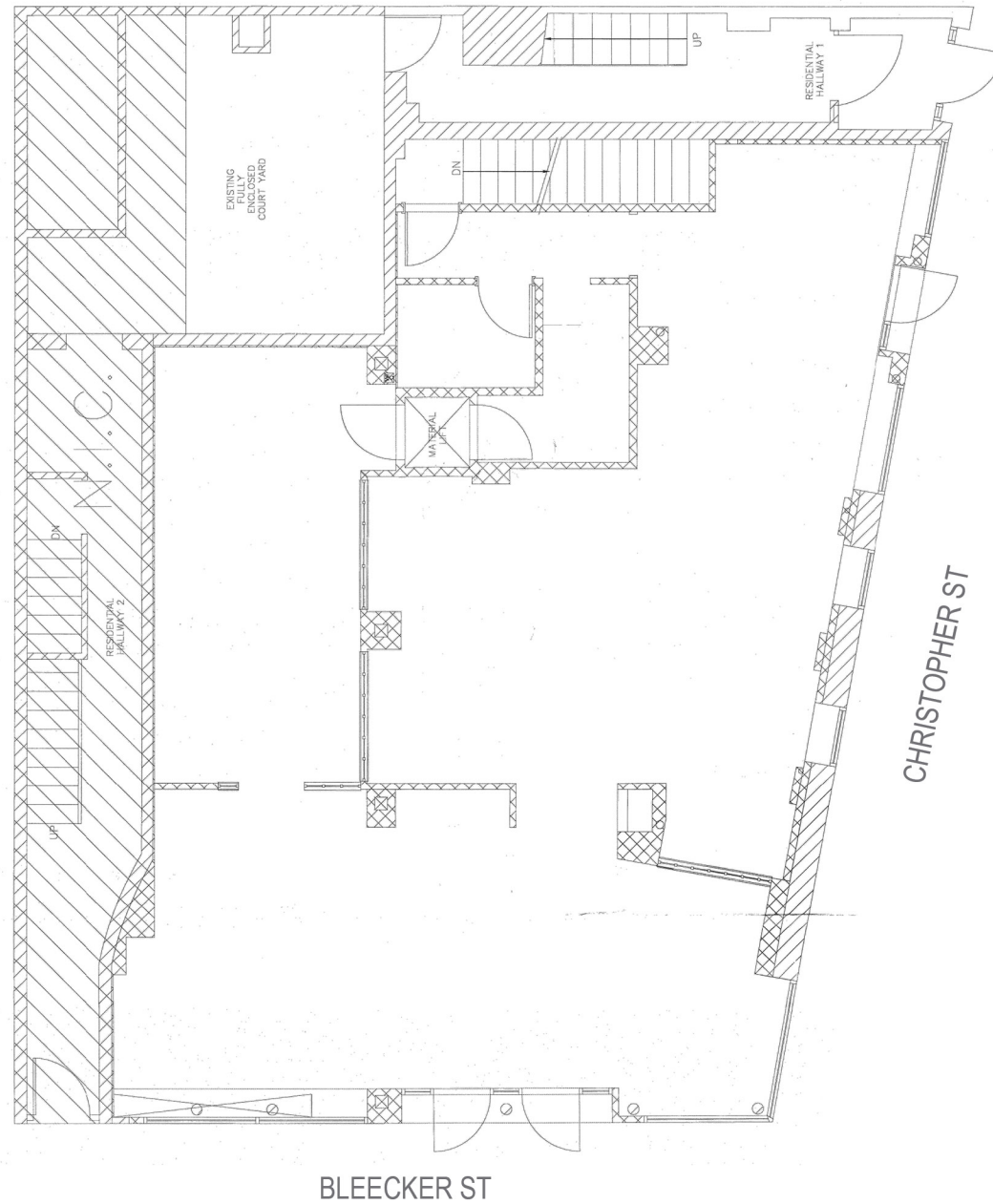
Transportation: ① Christopher Street Station

Comments: Built out café space – No key money

Neighbors: Brookfield's 24,000 SF of recently acquired properties on Bleecker Street, Starbucks, Faherty Brand, Rag N Bone, Stonewall Inn, L'Artusi, Magnolia Bakery, and Jo Malone, Big Gay Ice Cream, Marine Layer, Boucherie West Village, Milk Bar and Scotch & Soda.

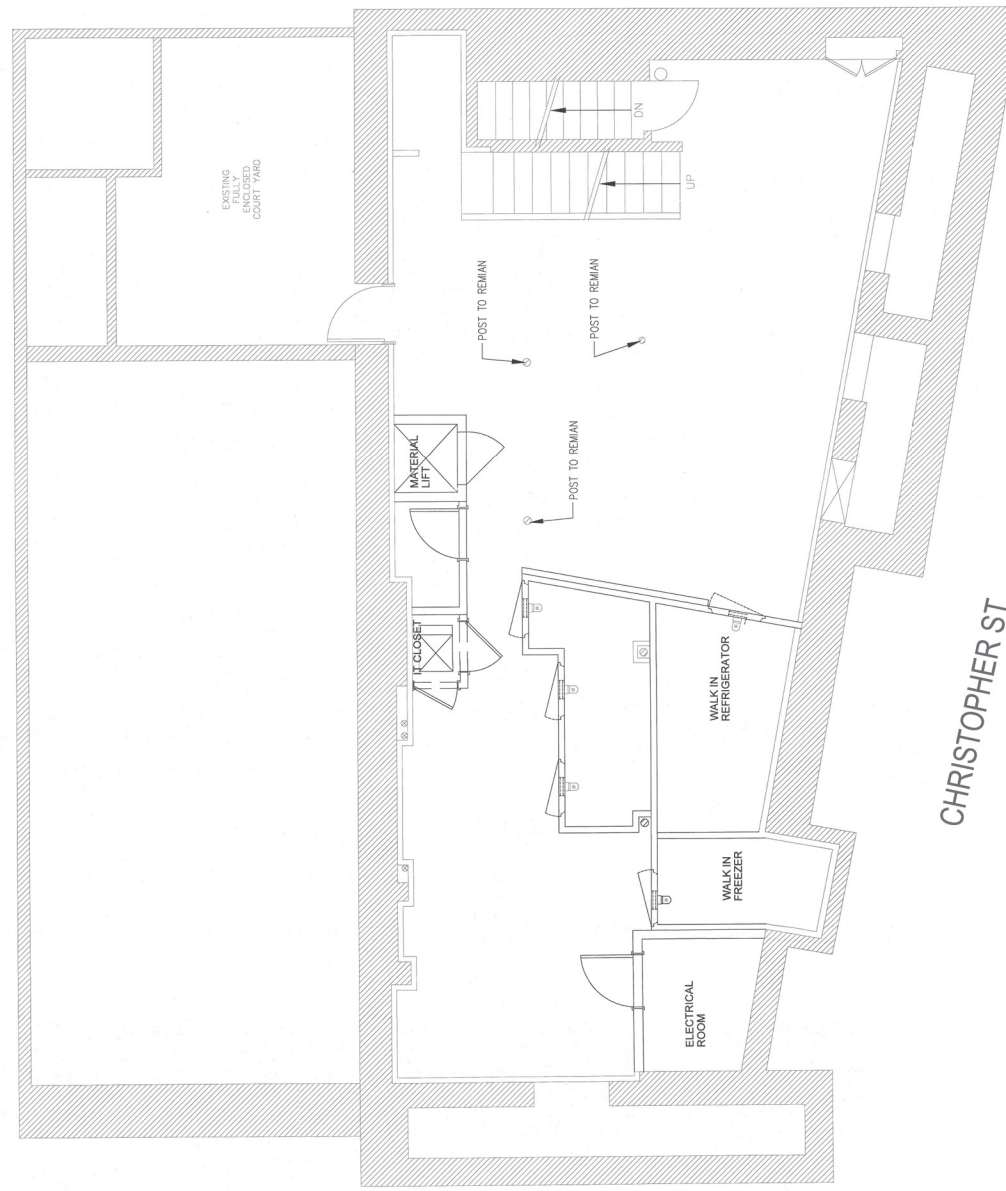
SITE PLAN

GROUND LEVEL



SITE PLAN

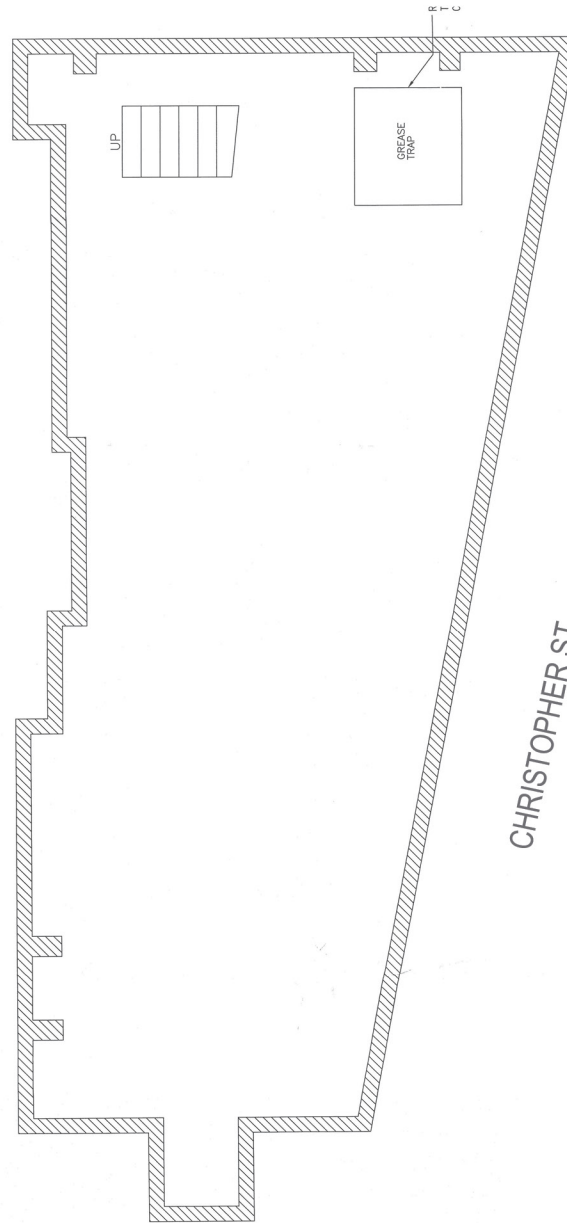
LOWER LEVEL



BLEECKER ST

SITE PLAN

SUB-LOWER LEVEL



BLEECKER ST

CHRISTOPHER ST

LOCATION

