

2,400 SF - 4,800 SF FITNESS STUDIO ENDCAP AVAILABLE FOR LEASE

1901-1955 SCHUETZ ROAD | SAINT LOUIS, MISSOURI 63146



2,400-4,800 SF Fitness Studio Endcap Space Available

- 1931-1933 Schuetz Road
- Can be demised to 2,400 SF bays
- Existing fitness studio with two restrooms and showers
- Located two blocks south of Page Ave on Schuetz Road near Westport Plaza
- Excellent visibility on Schuetz Road with building and pylon signage available
- Plentiful parking
- Stable residential and commercial area
- Co-tenants include Subway, Edward Jones, Vivola's, Crimson Dove, Top Sushi and Grand Liquor
- Traffic volume on Schuetz Road: 14,110 vehicles per day
- **LEASE RATE - CALL FOR DETAILS**

**BELOW-MARKET
SPECIAL RATE
AVAILABLE!**

For additional information, please contact:

BO KEEFER

bkeefe@hutkin.com

314.708.1258 o.

314.973.1242 m.

TONY GIARRATANO

tony@hutkin.com

314.708.4922 o.

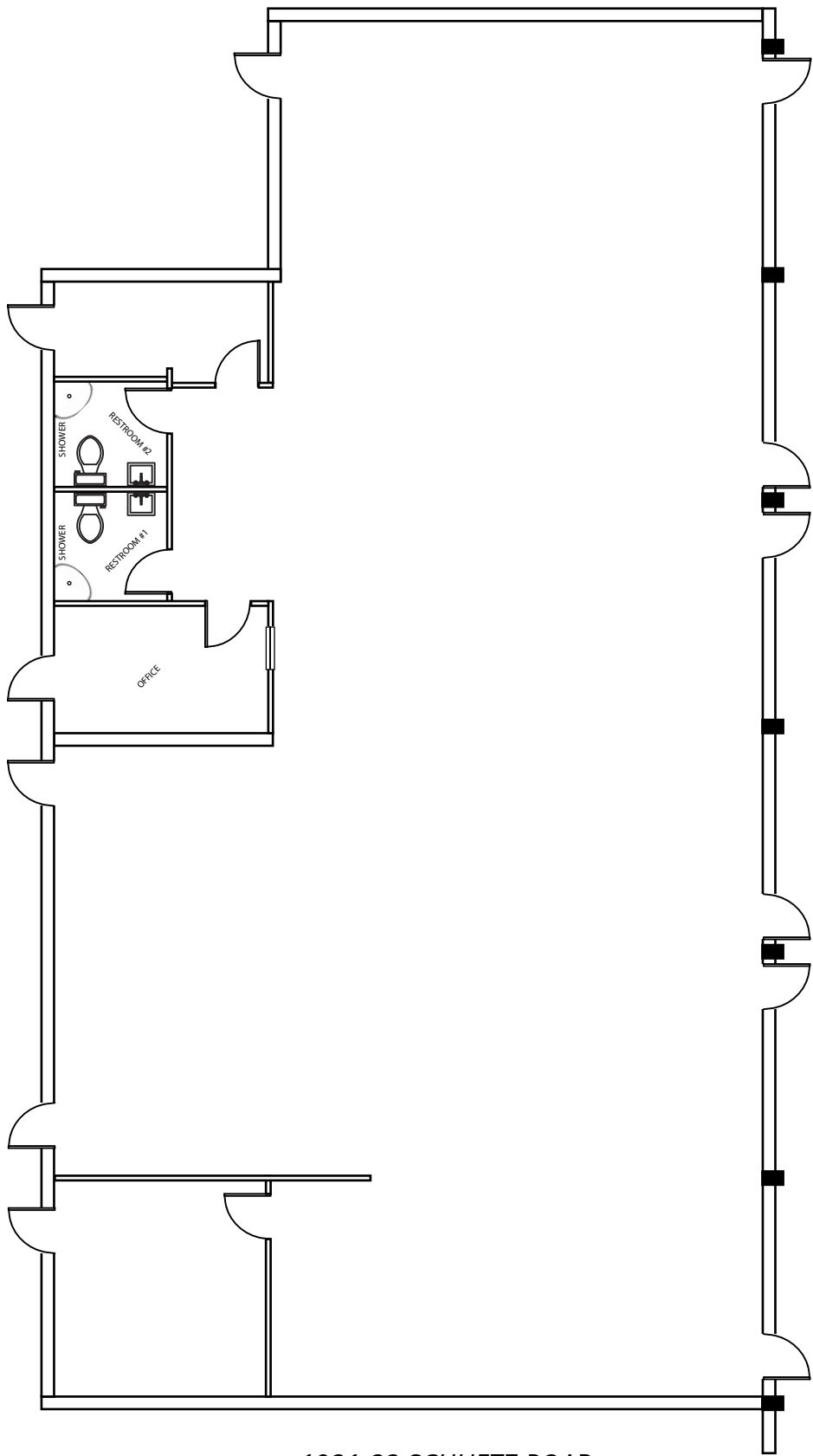
314.276.2352 m.

HUTKIN
DEVELOPMENT COMPANY

10829 OLIVE BOULEVARD, SUITE 200
ST. LOUIS, MISSOURI 63141
314.872.9140 PHONE
314.872.9001 FAX
WWW.HUTKIN.COM

2,400 SF - 4,800 SF FITNESS STUDIO ENDCAP AVAILABLE FOR LEASE

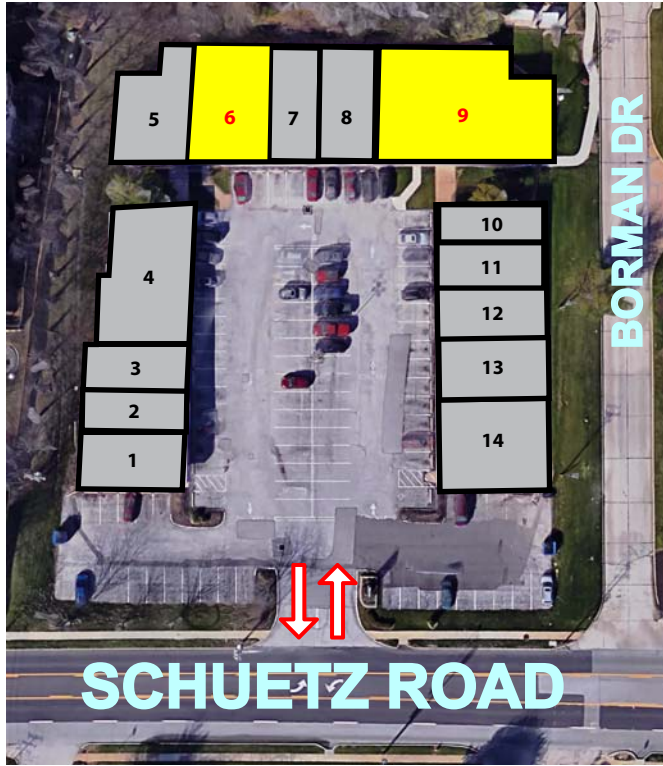
1901-1955 SCHUETZ ROAD | SAINT LOUIS, MISSOURI 63146



1931-33 SCHUETZ ROAD
4,800 SF

2,400 SF - 4,800 SF FITNESS STUDIO ENDCAP AVAILABLE FOR LEASE

1901-1955 SCHUETZ ROAD | SAINT LOUIS, MISSOURI 63146



NO.	ADDRESS	STATUS	SF
1	1901 Schuetz	Leased	1,300
2	1905 Schuetz	Leased	1,100
3	1907 Schuetz	Leased	831
4	1911 Schuetz	Leased	1,682
5	1917-19 Schuetz	Leased	1,502
6	1921-23 Schuetz	AVAILABLE	1,578
7	1925 Schuetz	Leased	832
8	1927 Schuetz	Leased	832
9	1931-33 Schuetz	AVAILABLE	4,800
10	1941 Schuetz	Leased	640
11	1943 Schuetz	Leased	640
12	1945 Schuetz	Leased	640
13	1947-49 Schuetz	Leased	1,280
14	1951-55 Schuetz	Leased	1,993



DEMOGRAPHICS	1 MILE
Population:	5,118
Daytime Employment:	22,904
No. of Households:	2,563
Avg. Household Income:	\$95,000

DEMOGRAPHICS	3 MILE
Population:	82,473
Daytime Employment:	84,891
No. of Households:	36,345
Avg. Household Income:	\$93,638

DEMOGRAPHICS	5 MILE
Population:	164,992
Daytime Employment:	154,525
No. of Households:	70,991
Avg. Household Income:	\$96,387

The information contained herein was obtained from a source we consider to be reliable. While we have no reason to doubt its accuracy, we do not guarantee it. All information is subject to change without notice.