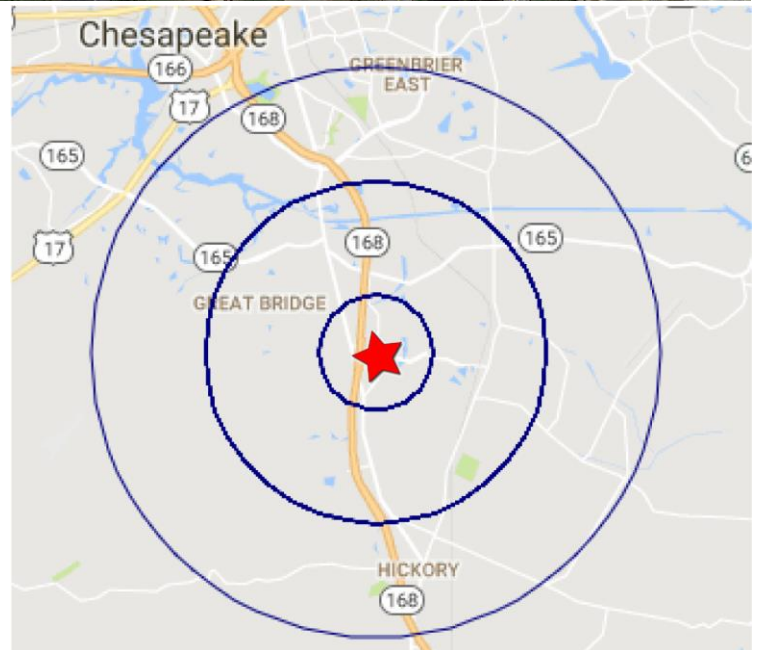




Property Features

- ±1.54 acre corner lot, at signalized intersection
- Up to 10,500 SF to be built
- Conveniently located near Battlefield Blvd & Chesapeake Expressway
- Adjacent to Hanbury Village Shopping Center
- Over 71,000 VPD on Chesapeake Expressway
- Office/medical/service uses



Demographics

	1 Mile	3 Miles	5 Miles
Population	8,414	41,917	76,516
No. of Households	2,749	13,684	26,570
Avg. HH Income	\$145,917	\$137,620	\$127,893

For more information, contact:

ED KIMPLE
 Senior Vice President
 757 213 4155
 ed.kimple@thalhimer.com

WICK SMITH
 Senior Associate
 757 457 9998
 wick.smith@thalhimer.com

The Town Center of Virginia Beach
 222 Central Park Ave., Suite 1820
 Virginia Beach, VA 23462
 www.thalhimer.com

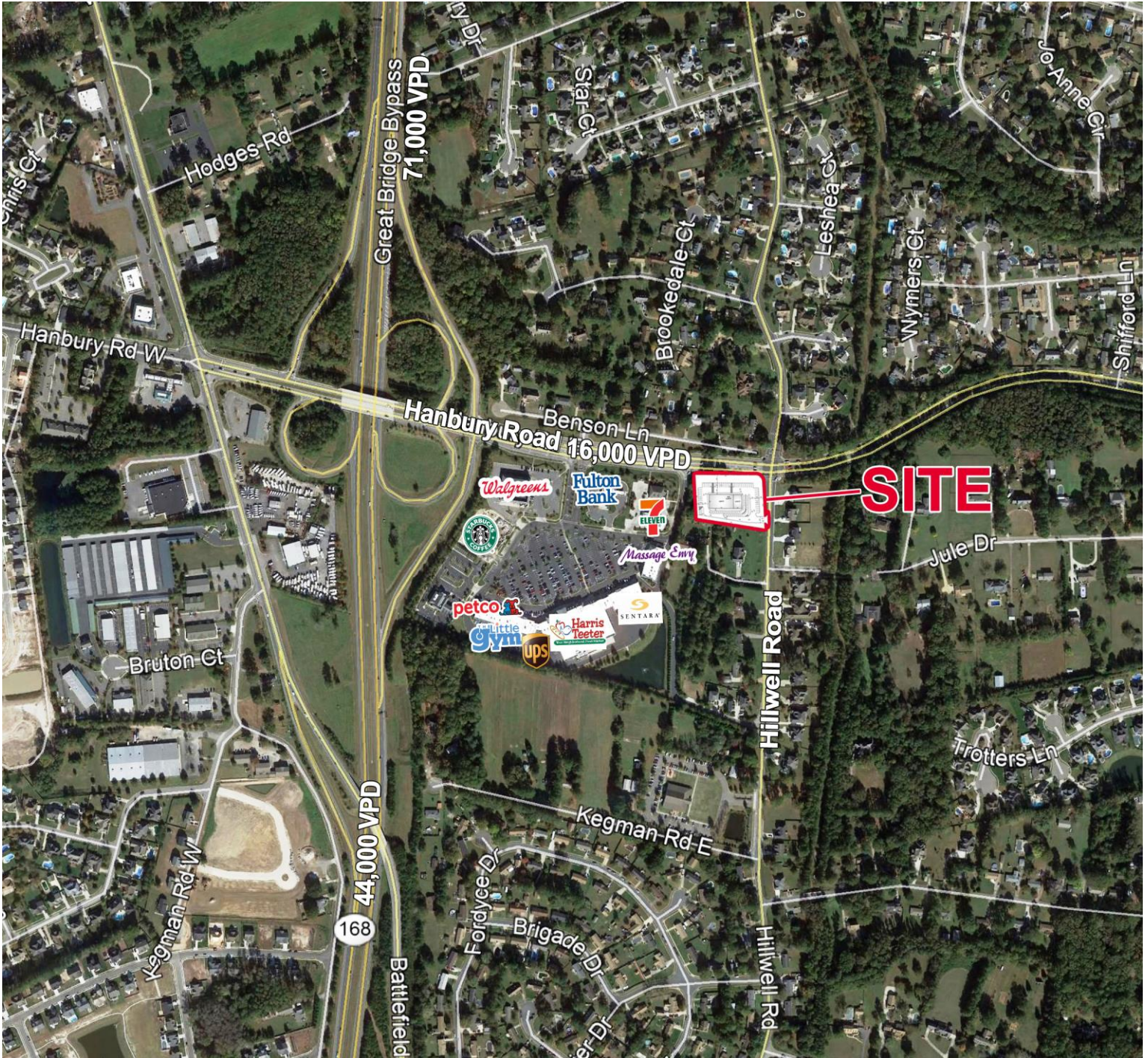


For more information, contact:

ED KIMPLE
Senior Vice President
757 213 4155
ed.kimple@thalhimer.com

WICK SMITH
Senior Associate
757 457 9998
wick.smith@thalhimer.com

The Town Center of Virginia Beach
222 Central Park Ave., Suite 1820
Virginia Beach, VA 23462
www.thalhimer.com



For more information, contact:

ED KIMPLE
 Senior Vice President
 757 213 4155
 ed.kimple@thalhimer.com

WICK SMITH
 Senior Associate
 757 457 9998
 wick.smith@thalhimer.com

The Town Center of Virginia Beach
 222 Central Park Ave., Suite 1820
 Virginia Beach, VA 23462
 www.thalhimer.com