



For more information, contact:

KENT ROBERTS, CCIM
Associate
540 767 3012
kent.roberts@thalhimer.com

Wells Fargo Tower
10 S. Jefferson Street, Suite 1750
Roanoke, VA 24011
www.thalhimer.com

Bldg 1



Property Features

- Three buildings – 348,370 +/- SF
- Situated on 39.53 AC +/- Zoned M-1 Shenandoah Co, VA
- Current on well and septic; public water near by
- All buildings wet sprinkled
- Centrally located in the Shenandoah Valley of Virginia along the I-81 corridor
- 3.4 Miles north of I-81 Exit 283, Woodstock; 10 miles south of I-81 Exit 291, Toms Brook
- Offering Price \$1,950,000

Building 1: 932 Fairview Rd, Woodstock, VA

- Class “C” Industrial
- 108,571 ± SF
- Constructed in 1960, Renovated 1972
- Clear height 12’ – 17’
- Six dock high doors
- 120-480v – 3P power

Building 2: 952 Fairview Rd, Woodstock, VA

- Class “C” Industrial
- 137,573 ± SF
- Constructed in 1960, Renovated 1972
- Clear height 12’
- 10 dock high doors
- 120-220v – 3P power

Building 3: 972 Fairview Rd, Woodstock, VA

- Class “C” Industrial
- 112,464 ± SF
- Constructed in 1971
- Clear height 17’-24’
- 18 dock high doors
- 3 – Ton crane
- 120-480v – 3P power

Bldg 2



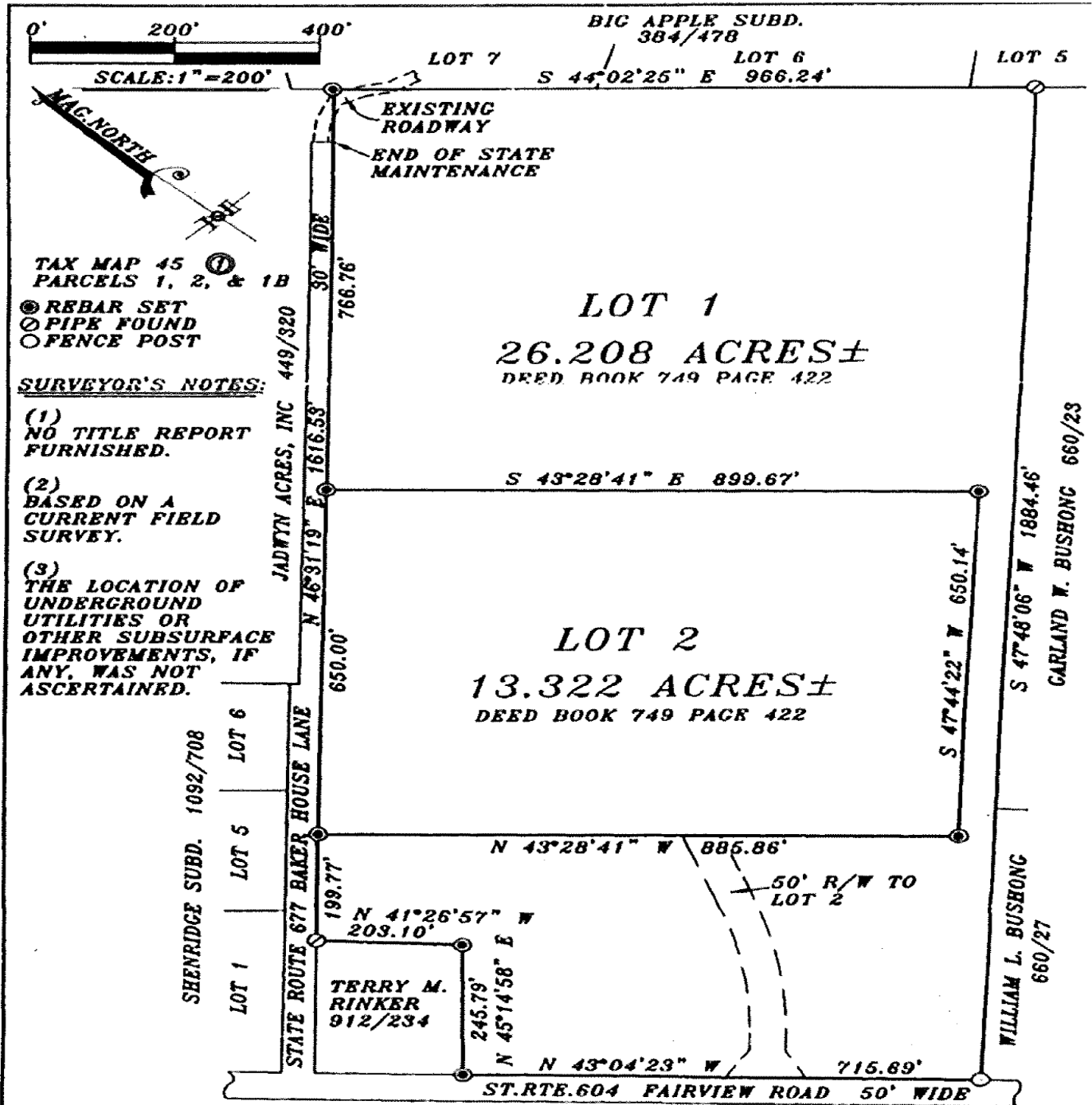
Bldg 3



For more information, contact:

KENT ROBERTS, CCIM
Associate
540 767 3012
kent.roberts@thalhimer.com

Wells Fargo Tower
10 S. Jefferson Street, Suite 1750
Roanoke, VA 24011
www.thalhimer.com



For more information, contact:

KENT ROBERTS, CCIM
 Associate
 540 767 3012
 kent.roberts@thalhimer.com

Wells Fargo Tower
 10 S. Jefferson Street, Suite 1750
 Roanoke, VA 24011
 www.thalhimer.com