



1440 28th Street
 Boulder, CO

Chris Boston, CCIM, MBA
 cboston@gibbonswhite.com
 (303) 586-5930

Kegan McNutt
 kegan@gibbonswhite.com
 (303) 586-5929

www.gibbonswhite.com



[View Map](#)

Fantastic Medical / Professional Office Space For Lease

Available Space	2,252 sq. ft.
Lease Rate / sq. ft.	\$35.00 NNN
Expenses / sq. ft.	\$18.75*

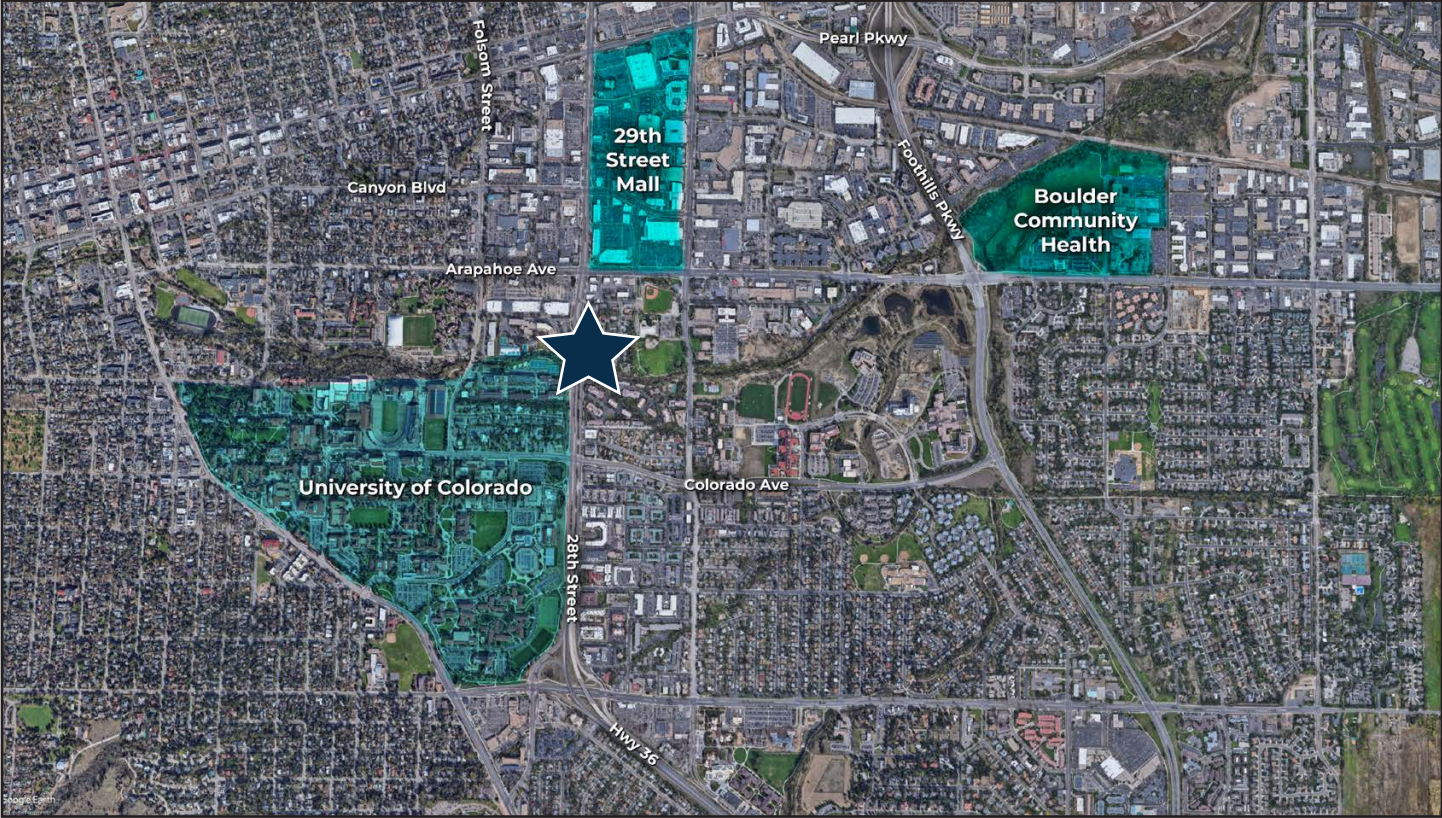
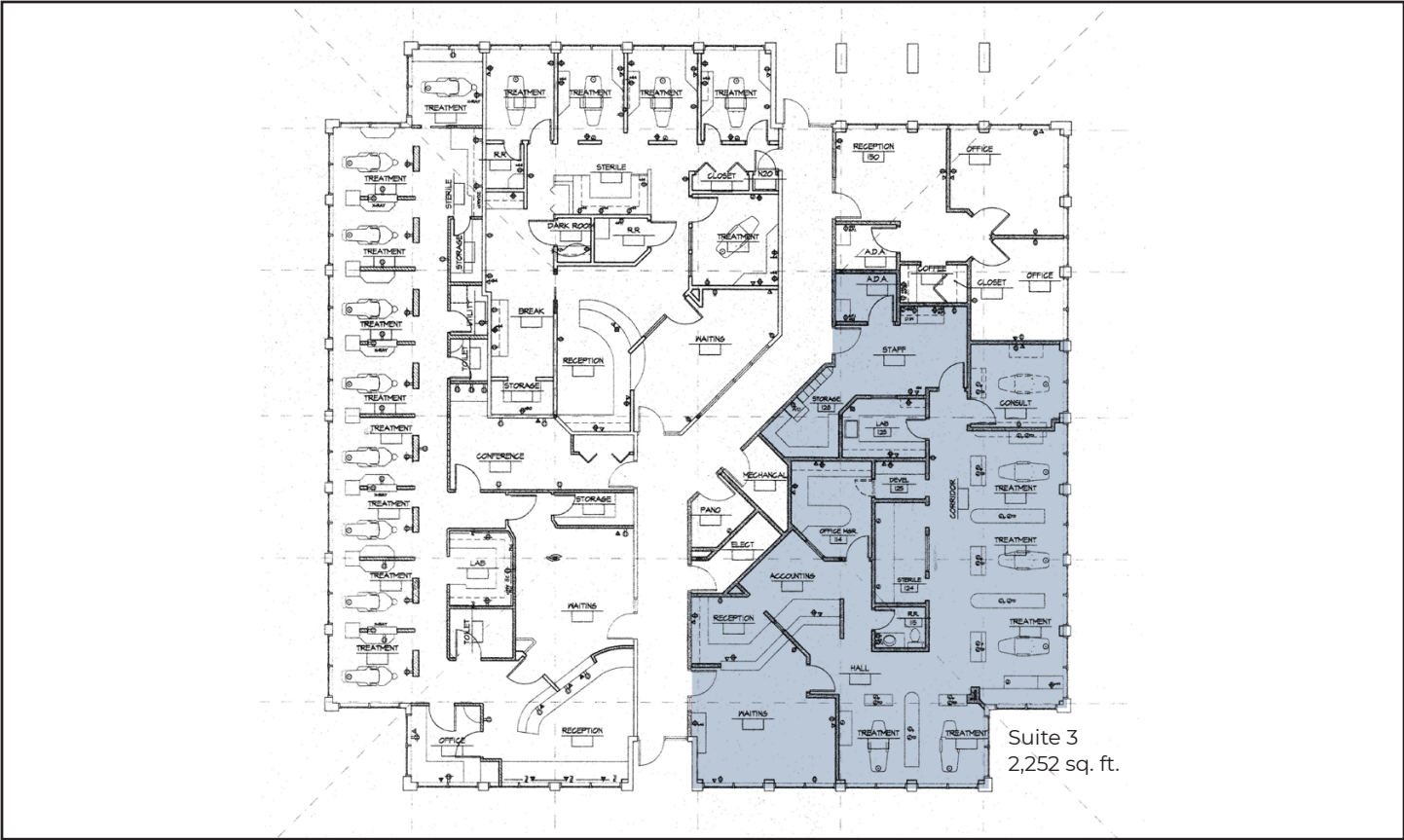
*Not Including Utilities or Interior Suite Janitorial

- Rare Opportunity to Lease a Prime Medical / Professional Office Space in a Phenomenal Central Boulder Location
- Perfect for a Variety of Medical / Dental or Professional Office Uses
- Central Boulder Location Just Southeast of 28th & Arapahoe - Great Visibility from 28th Street
- Space Features 6 Treatment Areas / Rooms, Reception / Waiting Area, Private Restrooms, Kitchen / Break Area & Lab Room
- Single Story Building with Excellent ADA Access & Abundant Parking

The information included has been obtained from sources believed reliable. While we do not doubt the accuracy of the information, it has not been verified and no guarantee, warranty, or representation is being made.



2305 Canyon Blvd, Suite 200, Boulder, CO 80302 - (303) 442-1040



The information included has been obtained from sources believed reliable. While we do not doubt the accuracy of the information, it has not been verified and no guarantee, warranty, or representation is being made.