



718 MAIN STREET, BOONTON, NJ 07005

- Total Building Size: 11,000
- Space Available 3,600 SF
- Divisible To: 1,800 SF on First Floor
1,800 SF on Lower Level
- Total Available Stores: 2
- 1st Floor former Yogurt store and Lower
Level former Meditation/Yoga Studio
- Parking: Street Parking
- Zoning: Central Business District
- Lease Rate 1st Floor \$15.00 PSF + utilities
- Lower Level \$9.00 PSF + utilities

Jennifer Corrao
Vice President

Office: 973-267-7778

Cell: 973-222-5944

jcorrao@weichertcommercial.com

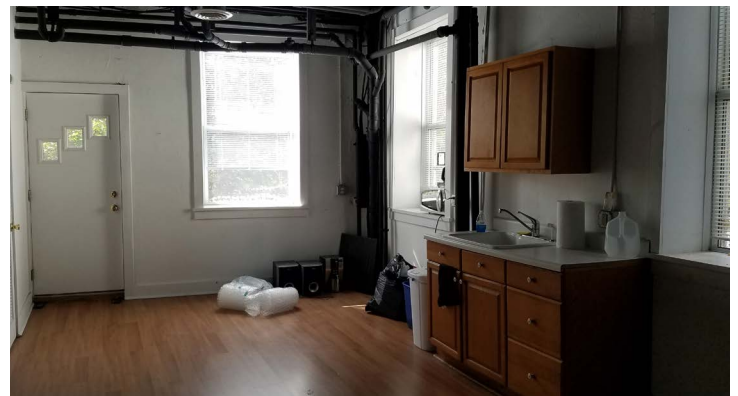
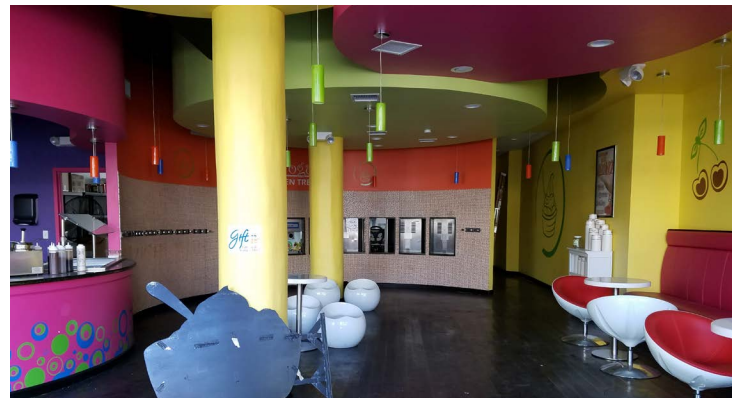
John Negri

Senior Vice President

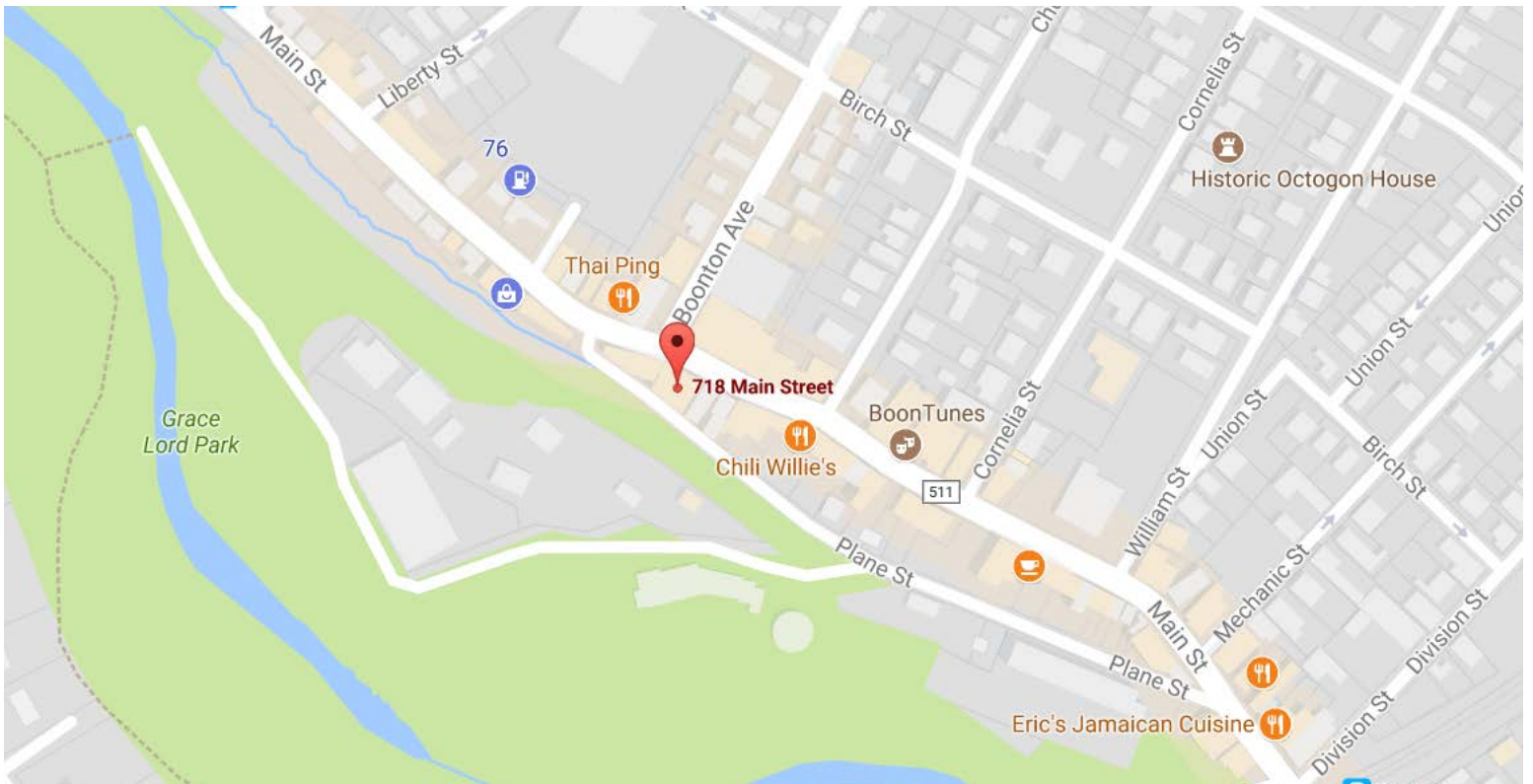
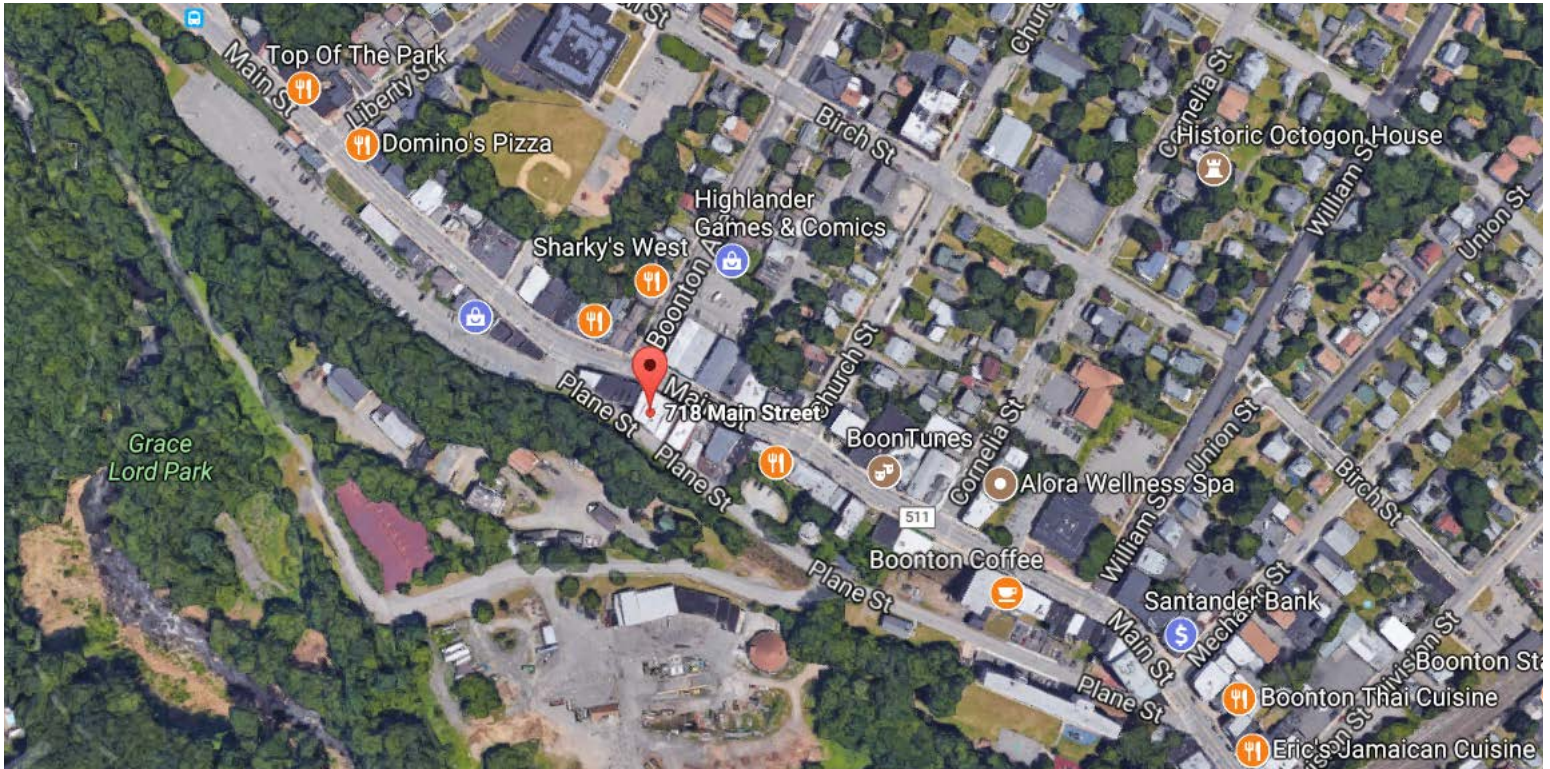
Office: 973-267-7778

Cell: 973-865-3456

jnegri@weichertcommercial.com



LOCATION MAP



DEMOGRAPHICS

	1 mile	3 miles	5 miles
Population			
2000 Population	8,708	47,587	100,825
2010 Population	8,584	47,408	101,843
2017 Population	8,754	48,818	104,812
2022 Population	8,864	49,681	106,640
2000-2010 Annual Rate	-0.14%	-0.04%	0.10%
2010-2017 Annual Rate	0.27%	0.41%	0.40%
2017-2022 Annual Rate	0.25%	0.35%	0.35%
2017 Male Population	50.5%	49.2%	49.1%
2017 Female Population	49.5%	50.8%	50.9%
2017 Median Age	41.2	43.3	43.7

In the identified area, the current year population is 104,812. In 2010, the Census count in the area was 101,843. The rate of change since 2010 was 0.40% annually. The five-year projection for the population in the area is 106,640 representing a change of 0.35% annually from 2017 to 2022. Currently, the population is 49.1% male and 50.9% female.

2010 Residential Population:	101,843	2017 Total Sales (\$000)	\$19,997,174
2017 Residential Population:	104,812	2017 Total Employees	94,339
2022 Residential Population:	106,640	Employee/Residential Population Ratio:	0.90:1
Annual Population Growth 2017 - 2022	0.35%	Total Number of Businesses:	6,181

Households by Income	2017		2022	
	Number	Percent	Number	Percent
Household	3,424	100%	3,455	100%
<\$15,000	236	6.9%	227	6.6%
\$15,000-\$24,999	209	6.1%	185	5.4%
\$25,000-\$34,999	242	7.1%	212	6.1%
\$35,000-\$49,999	327	9.6%	277	8.0%
\$50,000-\$74,999	424	12.4%	357	10.3%
\$75,000-\$99,999	445	13.0%	421	12.2%
\$100,000-\$149,999	769	22.5%	838	24.3%
\$150,000-\$199,999	289	8.4%	341	9.9%
\$200,000+	483	14.1%	597	17.3%
Median Household Income	\$88,751		\$101,774	
Average Household Income	\$117,372		\$135,849	
Per Capita Income	\$45,129		\$52,056	

Data Note: Income is expressed in current dollars

Source: U.S. Census Bureau, Census 2010 Summary File 1. Esri forecasts for 2016 and 2021. Esri converted Census 2000 data into 2010 geography.