

# Windermere Building

Close to Costco World HQ

1810 15th Place NW  
Issaquah, WA 98027

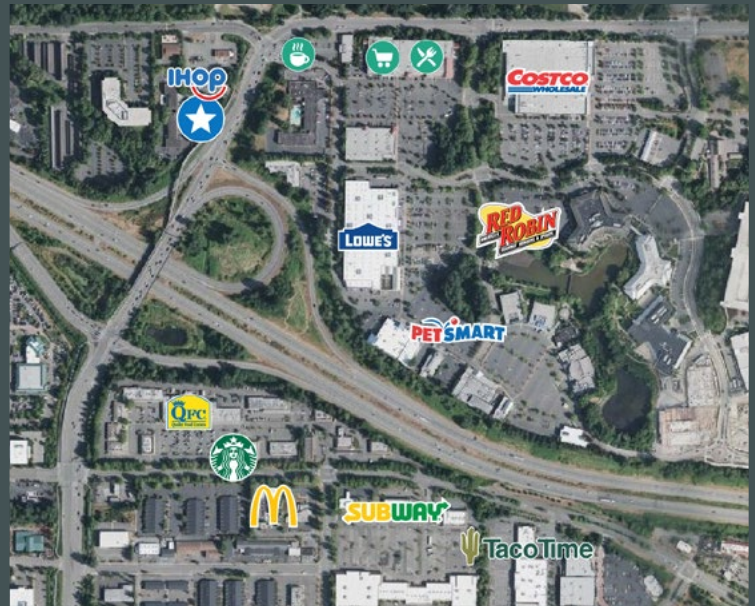
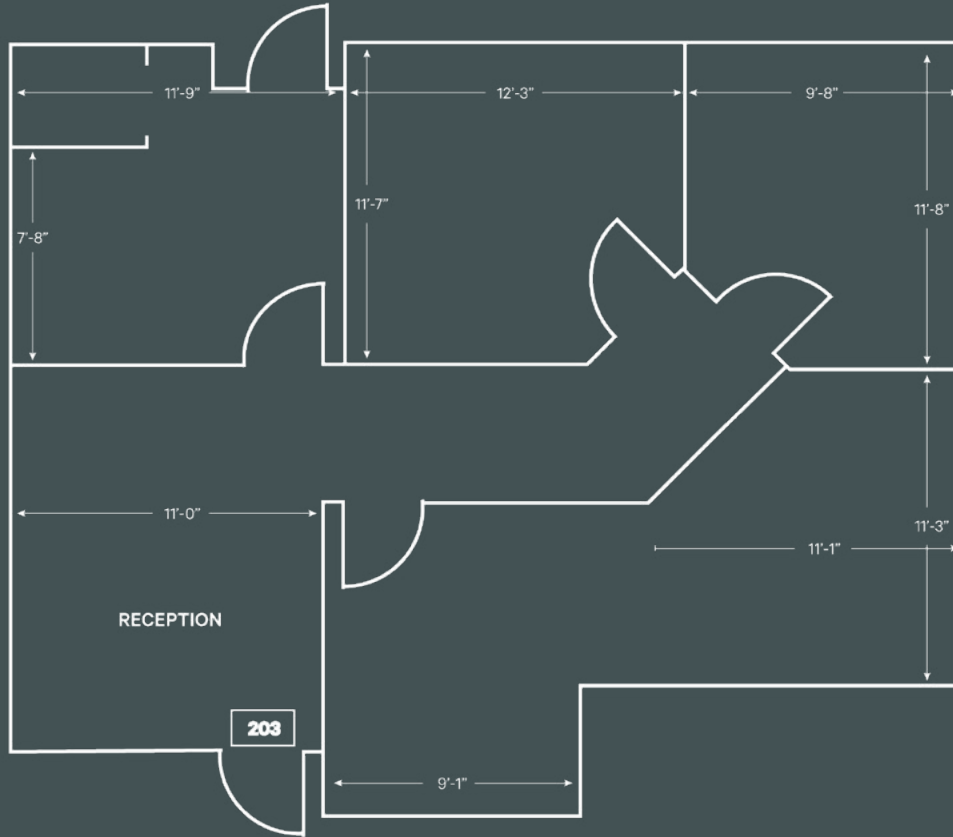
## Property Highlights

- + Suite 203: ±1,015 sq. ft.
- + Asking Rate: \$36.00/RSF/YR, Full Service
- + 3.6/1,000 SF parking ratio
- + Great location adjacent to Sammamish State Park
- + Immediate freeway access
- + Walking distance to abundant amenities including PCC Markets, Costco and Tully's
- + Elevator equipped

## Windermere Building Issaquah



# 1,015 SF Available



## Contact Us

**Jeff Jochums**

Executive Vice President  
+1 425 462 6971  
jeff.jochums@cbre.com

**Rob Baker**

Transaction Specialist  
+1 425 462 6974  
robert.baker@cbre.com

© 2022 CBRE, Inc. All rights reserved. This information has been obtained from sources believed reliable, but has not been verified for accuracy or completeness. You should conduct a careful, independent investigation of the property and verify all information. Any reliance on this information is solely at your own risk. CBRE and the CBRE logo are service marks of CBRE, Inc. All other marks displayed on this document are the property of their respective owners, and the use of such logos does not imply any affiliation with or endorsement of CBRE. Photos herein are the property of their respective owners. Use of these images without the express written consent of the owner is prohibited. rb-9-21-22