

25-27 E. Dickerson Street Dover, NJ



MEDICAL FOR LEASE

PROPERTY SPECIFICATIONS:

Property Type: Office/Medical

Utilities: Separately metered

Total Building Size: 9,640 SF

Parking: 5 spots

Available Space: 3,500 SF

Zoning: D2

Lease Rate: \$15 PSF Gross + Utilities

Available: Immediately

Comments: Fully built out medical unit with elevator, located in downtown Dover across from Train Station. Unit includes 9 exam rooms with plumbing, 2 private restrooms, reception area, waiting room, lab, offices and conference room.

For more information, please contact:

Brian Wilson

bwilson@resource-realty.com

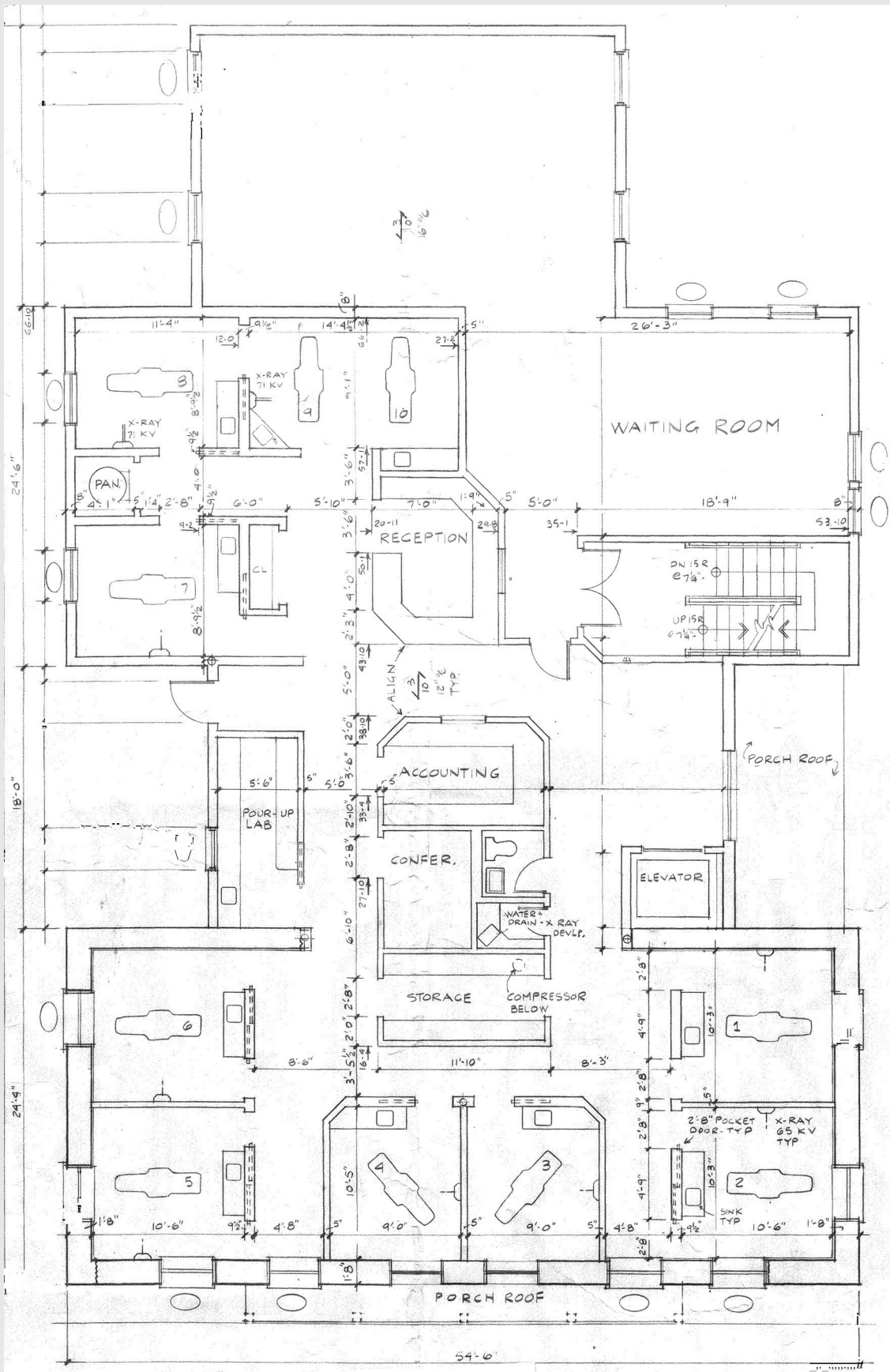
973-299-0900

Exclusive Leasing Agent:



Resource Realty
Corporate Real Estate Services

www.resource-realty.com



All information furnished is from sources deemed reliable. No representation is made as to the accuracy thereof and it is submitted subject to error, omission, change of price, prior sale or lease and withdrawal without notice. Any commission due cooperating brokers is subject to all of the terms and conditions upon which we and our clients have agreed.

Exclusive Leasing Agent:



973-299-0900
www.resource-realty.com