



WHITTIER MILL

2124-2140 JAMES JACKSON PARKWAY
INDUSTRIAL SPACE FOR LEASE



BUILDING SPECIFICATIONS

- 4,000 - 24,000 RSF Available
- Heavy power available
- Dock high and Drive ins Available
- Street Frontage Available
- Secured truck court



PROPERTY OVERVIEW

Whittier Mill is an 80,3000 square foot multi-tenant industrial building in Atlanta's Chatahoochee Industrial submarket. This asset is designed to accomodate light and hevay industrial users as well as showroom groups. The property is less than a mile from I-285, five miles from the I-75 and I-285 interchange at the Battery and six miles from the heart of downtown Atlanta.



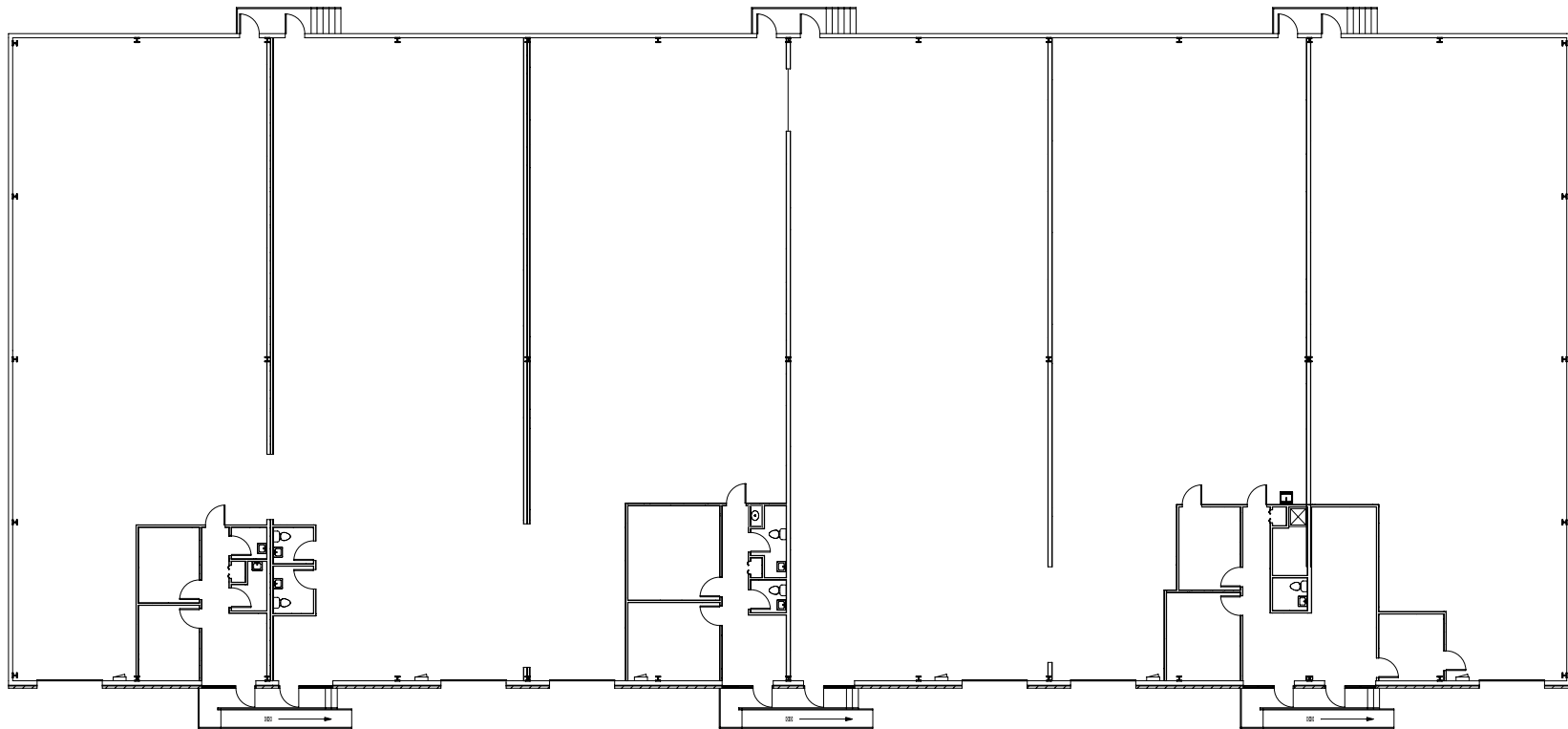
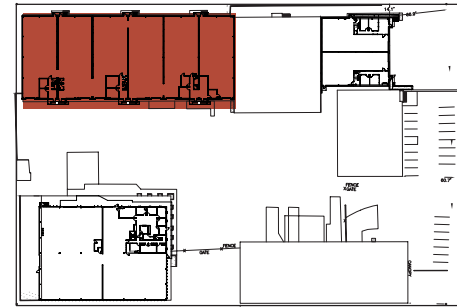
2134 JAMES JACKSON PKWY

WAREHOUSE
21,874 RSF

OFFICE
2,212 RSF

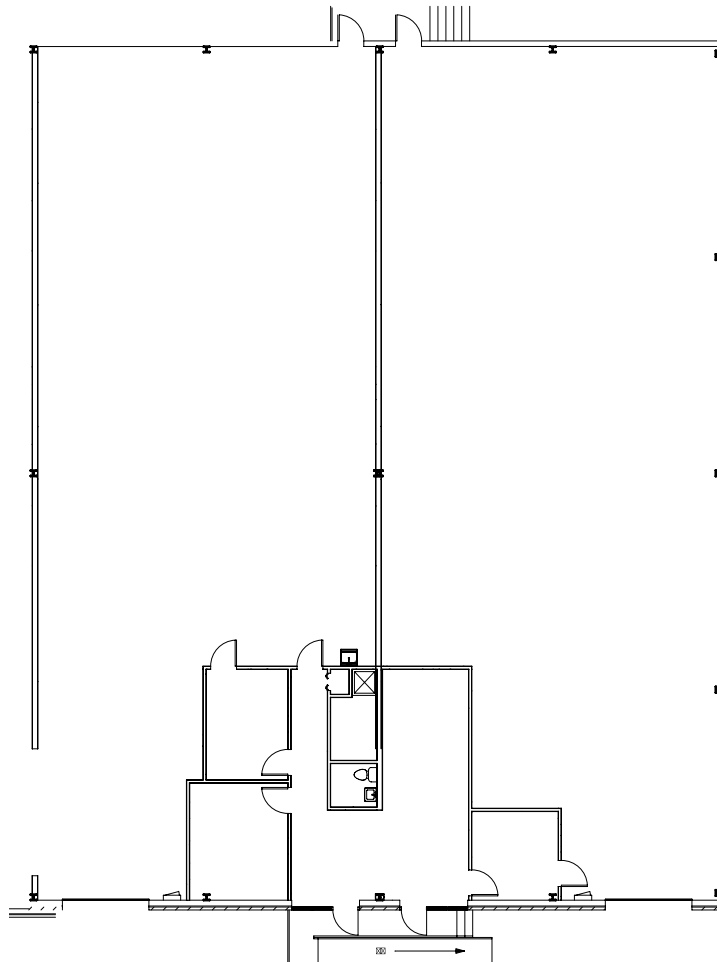
TOTAL
24,086 RSF

SITE PLAN

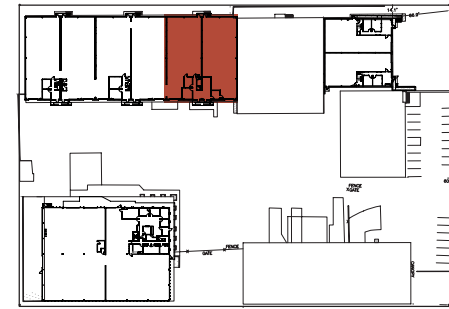




2134 JAMES JACKSON PKWY, SUITE A



SITE PLAN



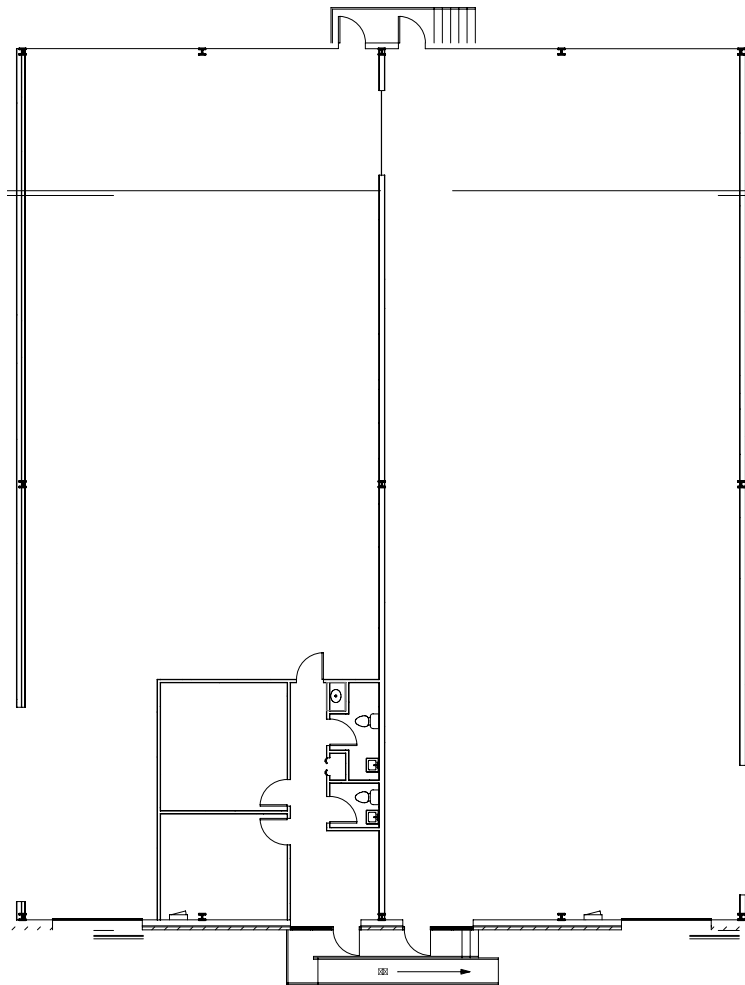
WAREHOUSE
7,024 RSF

•
OFFICE
1,006 RSF

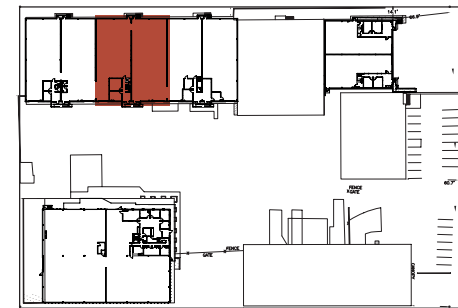
•
TOTAL
8,030 RSF

3

2134 JAMES JACKSON PKWY, SUITE B



SITE PLAN



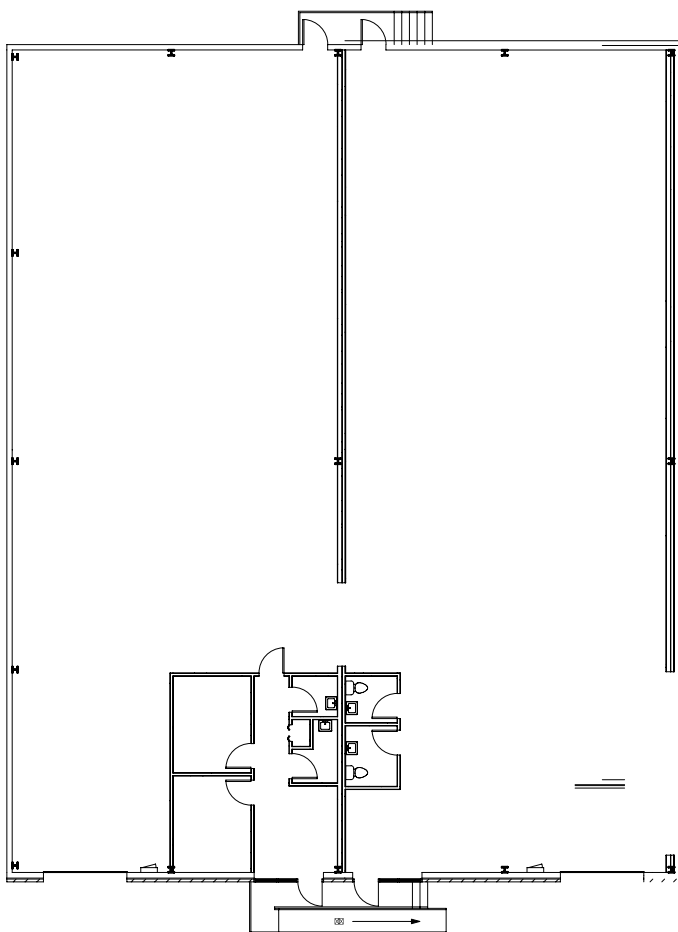
WAREHOUSE
7,370 RSF

•
OFFICE
699 RSF

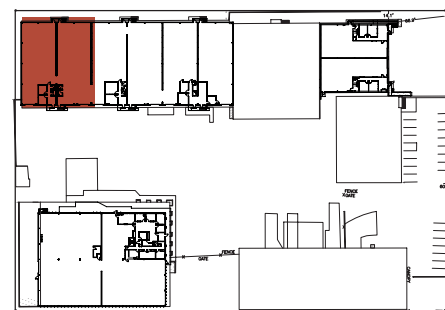
•
TOTAL
8,069 RSF

4

2134 JAMES JACKSON PKWY, SUITE C



SITE PLAN



WAREHOUSE
7,370 RSF

•
OFFICE
699 RSF

•
TOTAL
8,069 RSF

BUILDING AERIALS

2124-2140
JAMES
JACKSON
PARKWAY



James Jackson Parkway

INTERSTATE
285

BUILDING AERIALS



BUILDING PHOTOS





CONTACT

JORDAN CAMP

Vice President

404.649.6920 ext. 18

Jordan.Camp@foundrycommercial.com

REID HANNER

Senior Associate

404.902.6767

Reid.Hanner@foundrycommercial.com

FOUNDRY COMMERCIAL

3520 Piedmont Rd NE

Suite 235

Atlanta, GA 30305

404.649.6920 | foundrycommercial.com

Although the information contained herein was provided by sources believed to be reliable, Foundry Commercial makes no representation, expressed or implied, as to its accuracy and said information is subject to errors, omissions or changes.