

ANCHOR & JR. ANCHOR SPACE AVAILABLE

Former Kmart Building | Las Cruces, NM



Neighboring Tenants Include:



AVAILABLE:

- * Anchor & Jr. Anchor positions available
- * 3 pads available for GL or BTS
- * Total GLA ±87,294 SF on 11.31 AC
- * Parking: 840 shared spaces
- * Located in the center of Las Cruces surrounded by dense population base of 74K w/in 3 miles.
- * Primary retail intersection - adjacent tenants include Albertsons, Pro's Ranch, Walgreens, Factory 2U, Rent A Center, and several national QSRs.

2013 DEMOGRAPHICS:	1 MI	3 MI	5 MI
Population:	10,216	74,813	106,236
Average HH Income:	\$32,838	\$45,754	\$52,467
Daytime Population:	9,893	47,232	56,364

2012 TRAFFIC COUNTS:

El Paseo Rd.	13,275 CPD
Idaho Ave.	12,918 CPD



Disclaimer: The information contained herein and attached is provided from sources deemed reliable. However, we do not guarantee any of the information as it is subject to errors, omissions, withdrawal from market, or change in terms, all without notice. All information should be independently verified.

Kino James
kino@base5retail.com
505.463.7191 [cell/text]

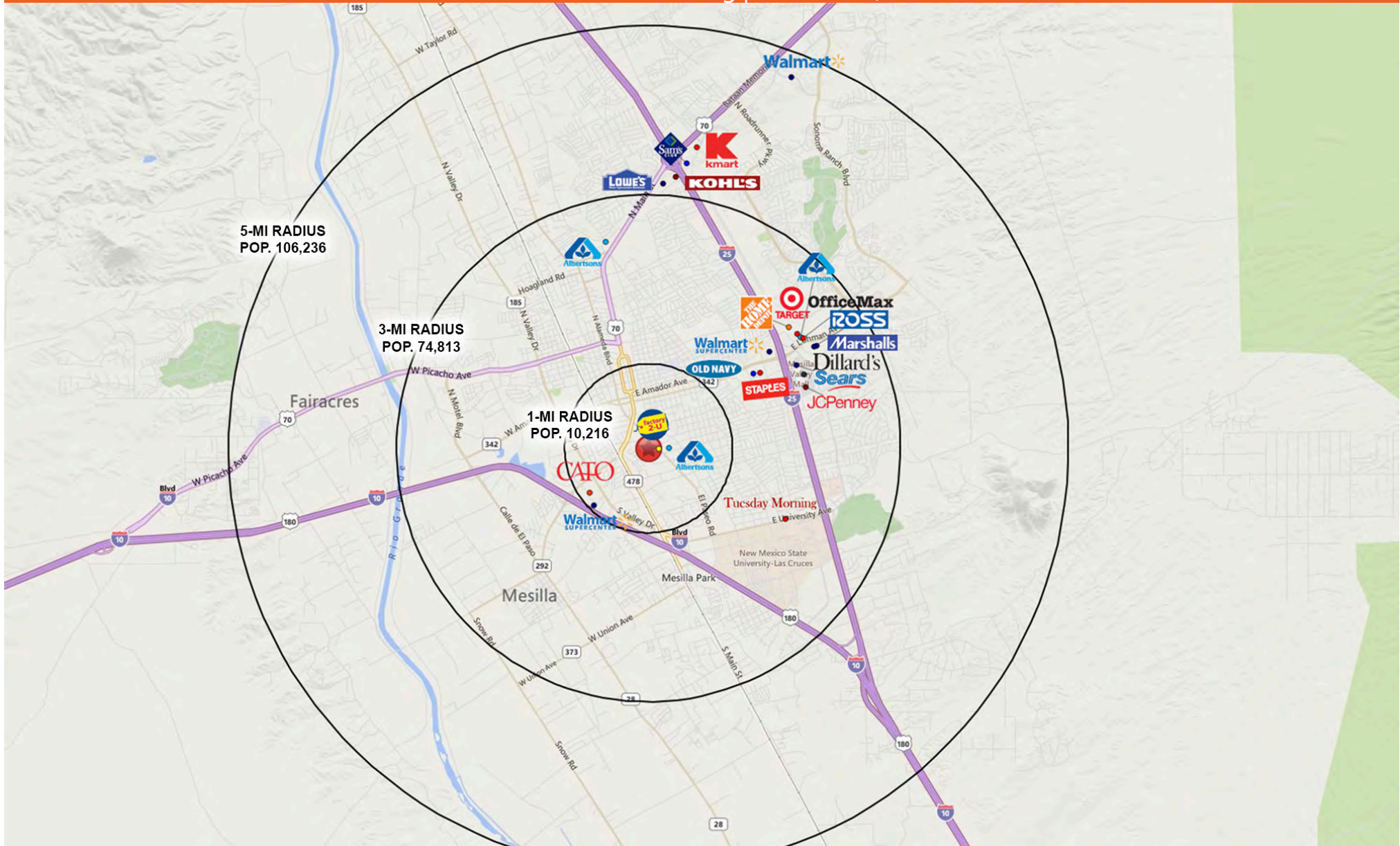
David Chavez
david@base5retail.com
505.507.3283 [cell/text]

BASE 5 COUNT ON US
RETAIL PARTNERS

#505.607.0605 * BASE5RETAIL.COM * 115 GOLD AVE SW SUITE 2036 * ALBUQUERQUE, NM 87102

ANCHOR & JR. ANCHOR SPACE AVAILABLE

Former Kmart Building | Las Cruces, NM



BASE 5 COUNT ON US
RETAIL PARTNERS

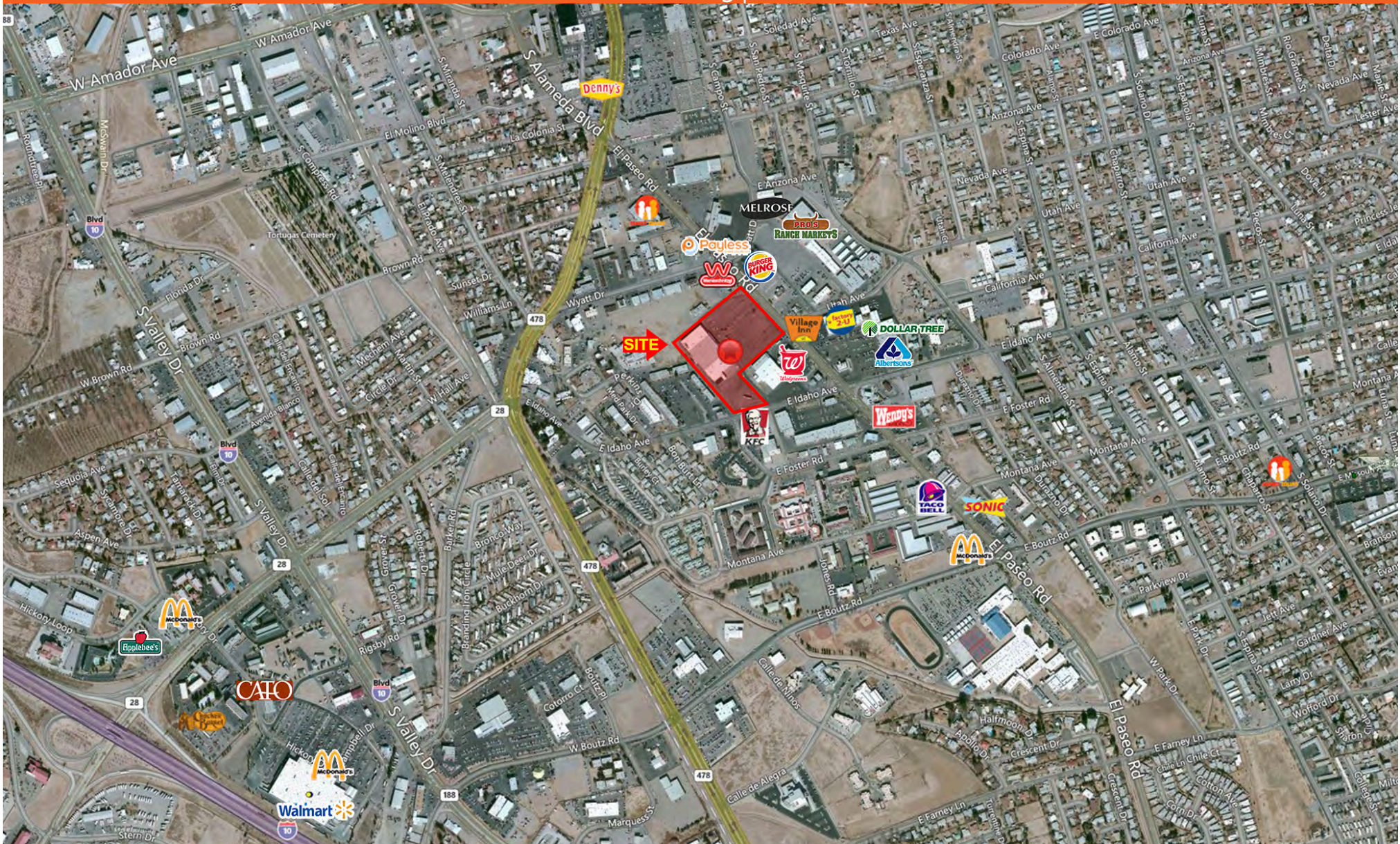
Kino James
kino@base5retail.com
505.463.7191 [cell/text]

David Chavez
david@base5retail.com
505.507.3283 [cell/text]

#505.607.0605 * BASE5RETAIL.COM * 115 GOLD AVE SW SUITE 2036 * ALBUQUERQUE, NM 87102

ANCHOR & JR. ANCHOR SPACE AVAILABLE

Former Kmart Building | Las Cruces, NM



BASE 5 COUNT ON US
RETAIL PARTNERS

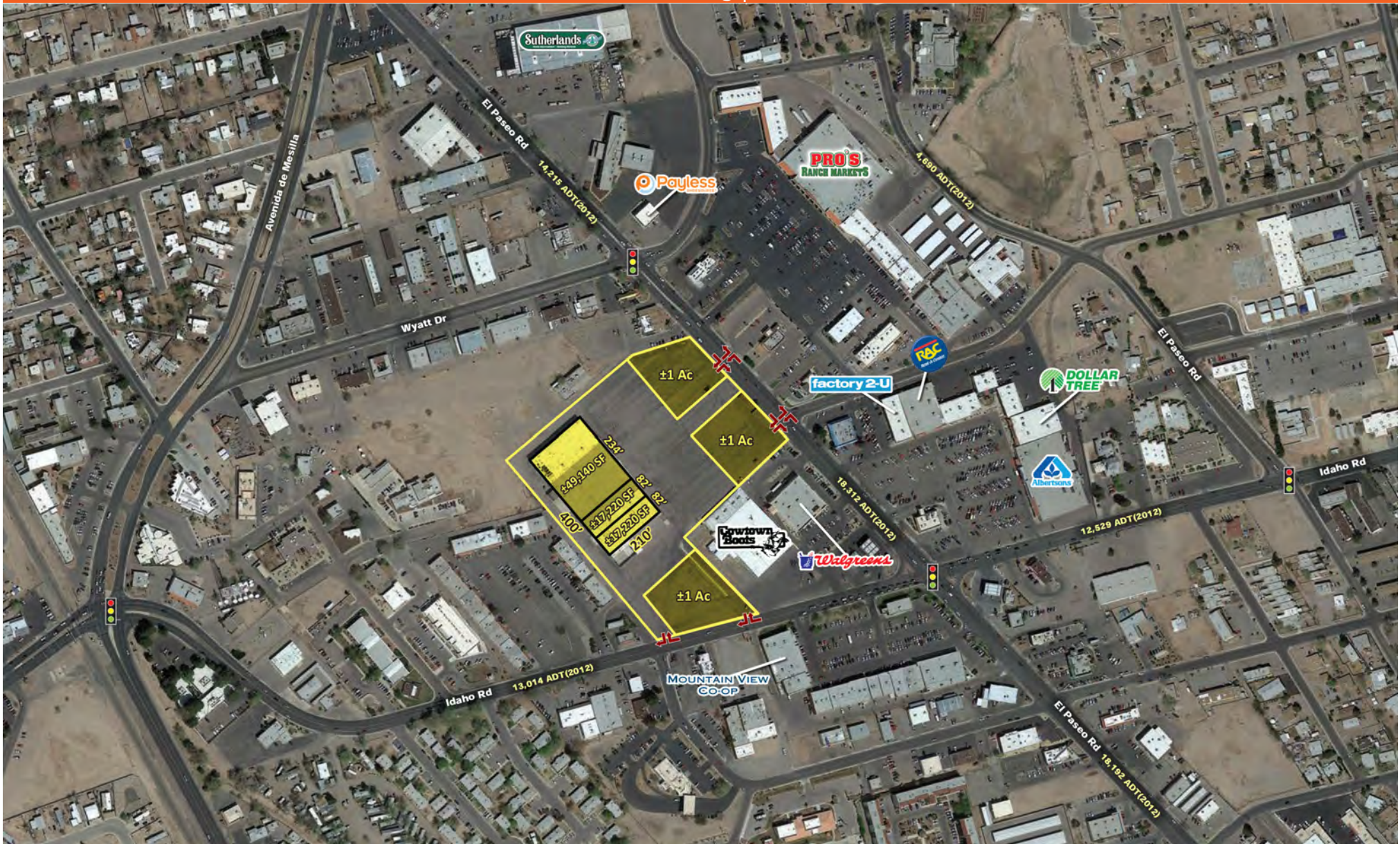
Kino James
kino@base5retail.com
505.463.7191 [cell/text]

David Chavez
david@base5retail.com
505.507.3283 [cell/text]

#505.607.0605 * BASE5RETAIL.COM * 115 GOLD AVE SW SUITE 2036 * ALBUQUERQUE, NM 87102

ANCHOR & JR. ANCHOR SPACE AVAILABLE

Former Kmart Building | Las Cruces, NM



BASE 5 COUNT ON US
RETAIL PARTNERS

Kino James
kino@base5retail.com
505.463.7191 [cell/text]

David Chavez
david@base5retail.com
505.507.3283 [cell/text]

#505.607.0605 * BASE5RETAIL.COM * 115 GOLD AVE SW SUITE 2036 * ALBUQUERQUE, NM 87102

ANCHOR & JR. ANCHOR SPACE AVAILABLE

Former Kmart Building | Las Cruces, NM



BASE 5 COUNT ON US
RETAIL PARTNERS

Kino James
kino@base5retail.com
505.463.7191 [cell/text]

David Chavez
david@base5retail.com
505.507.3283 [cell/text]

#505.607.0605 * BASE5RETAIL.COM * 115 GOLD AVE SW SUITE 203G * ALBUQUERQUE, NM 87102

SUMMARY PROFILE

2000-2010 Census, 2013 Estimates with 2018 Projections

Calculated using Proportional Block Groups



BASE 5
RETAIL PARTNERS

Base 5 Retail Partners

Lat/Lon: 32.2982/-106.7744

RS1

1240 El Paseo Rd

Las Cruces, NM 88001

1 mi radius 3 mi radius 5 mi radius

		1 mi radius	3 mi radius	5 mi radius
POPULATION	2013 Estimated Population	10,216	74,813	106,236
	2018 Projected Population	10,851	79,395	112,799
	2010 Census Population	9,670	70,882	100,604
	2000 Census Population	9,100	65,603	86,725
	Projected Annual Growth 2013 to 2018	1.2%	1.2%	1.2%
	Historical Annual Growth 2000 to 2013	0.9%	1.1%	1.7%
	2013 Median Age	32.9	32.4	34.3
HOUSEHOLDS	2013 Estimated Households	4,378	29,765	42,048
	2018 Projected Households	4,679	31,825	44,958
	2010 Census Households	4,197	28,536	40,313
	2000 Census Households	3,769	25,213	33,045
	Projected Annual Growth 2013 to 2018	1.4%	1.4%	1.4%
	Historical Annual Growth 2000 to 2013	1.2%	1.4%	2.1%
RACE AND ETHNICITY	2013 Estimated White	69.8%	73.5%	75.3%
	2013 Estimated Black or African American	3.0%	2.4%	2.2%
	2013 Estimated Asian or Pacific Islander	1.0%	1.8%	1.7%
	2013 Estimated American Indian or Native Alaskan	2.5%	2.2%	2.0%
	2013 Estimated Other Races	23.8%	20.2%	18.8%
	2013 Estimated Hispanic	69.9%	61.9%	58.1%
INCOME	2013 Estimated Average Household Income	\$32,838	\$45,754	\$52,467
	2013 Estimated Median Household Income	\$26,274	\$36,241	\$41,300
	2013 Estimated Per Capita Income	\$14,309	\$18,498	\$20,990
EDUCATION (AGE 25+)	2013 Estimated Elementary (Grade Level 0 to 8)	15.4%	9.2%	7.8%
	2013 Estimated Some High School (Grade Level 9 to 11)	11.9%	8.7%	8.2%
	2013 Estimated High School Graduate	21.7%	20.2%	19.9%
	2013 Estimated Some College	24.7%	26.4%	26.4%
	2013 Estimated Associates Degree Only	5.6%	7.3%	7.3%
	2013 Estimated Bachelors Degree Only	12.2%	17.4%	18.2%
2013 Estimated Graduate Degree	8.4%	10.9%	12.1%	
BUSINESS	2013 Estimated Total Businesses	1,259	3,916	4,577
	2013 Estimated Total Employees	9,893	47,232	56,364
	2013 Estimated Employee Population per Business	7.9	12.1	12.3
	2013 Estimated Residential Population per Business	8.1	19.1	23.2

This report was produced using data from private and government sources deemed to be reliable. The information herein is provided without representation or warranty.