

AVAILABLE: 2 FLEX SPACES ± 4,700 SF TO 10,700 SF

1773-1793, 1799 Vineyard Drive, Antioch, CA 94509



KATE WRIGHT

Dir: 925.296.3308

Cell: 925.337.1288

kate.wright@tricommercial.com

CalDRE #01997870

KEITH SERNE

Dir: 925.296.3337

Cell: 916.730.6439

keith.serne@tricommercial.com

CalDRE #02094384

TRI Commercial Real Estate Services 1777 Oakland Blvd, Suite 220, Walnut Creek, CA 94596



±9,584 SF FLEX WAREHOUSE SPACE

ABOUT THE CAMPUS

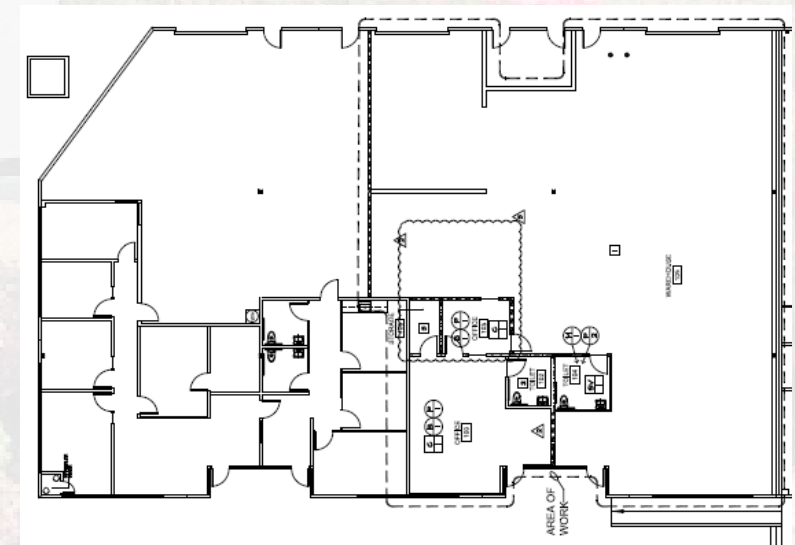
Beautiful office/flex park setting with new exterior paint, updated landscaping, and newly striped parking lot. Local owners.

Call to schedule a tour.

Size	±9,584 SF
Demisable	Yes (±4,792 SF)
Type	Flex Warehouse

ABOUT 1773-1779 VINEYARD DR

- Two grade doors
- Floor drain
- 16' Clear Height



±10,717 SF FLEX/SHOWROOM

ABOUT THE CAMPUS

Beautiful office/flex park setting with new exterior paint, updated landscaping, and newly striped parking lot. Local owners.

Call to schedule a tour.

Size	±10,717 SF
Demisable	Yes (±5,378 SF)
Type	Flex/Showroom

ABOUT 1799 VINEYARD DR

- 800 Amps, 3 phase power
- 16' clear height
- HVAC throughout
- Grade door could be added

