

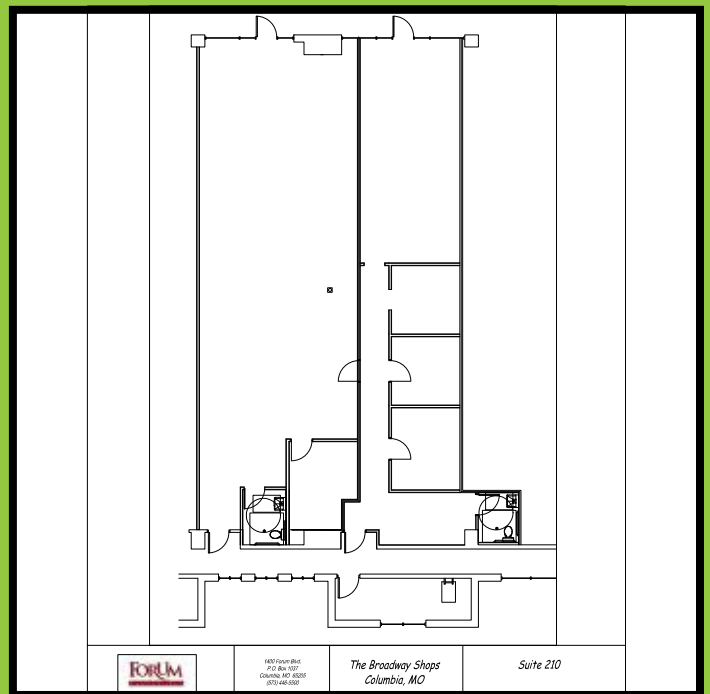
LP FOR LEASE |

LINDNER PROPERTIES

(573) 446-5500
LindnerProperty.com



BROADWAY SHOPPS SUITE 210



LP FOR LEASE |

LINDNER PROPERTIES

The Broadway Shops
Suite 210
2609 E Broadway
Columbia, MO 65201

SUMMARY

- 87,000 square feet
- Traffic Count (VPD):
Highway 63 - 45,000
Broadway - 30,000
- Cotenants include
Applebee's, Five Guys,
Plato's Closet, Massage
Envy, Tropical Smoothie
Cafe, GameStop and
others
- 16,455 Medical
Professionals within 3
mile radius
- 1 minute drive from
downtown, University of
Missouri, Boone Hospital
and University Women's
& Children's Hospital
- Located at the main
entrance to Walmart
Supercenter, Sam's
Club, Lowe's, Hy-Vee
and Academy Sports

	1-Mile	3-Miles	5-Miles
Population	4,521	63,090	118,328
Average HH Income	\$65,033	\$53,035	\$65,393
Employment	12,931	75,892	110,595
Total Daytime Population	14,723	106,395	166,808



SUITE SUMMARY

- 2,945 square feet
- Will Subdivide
- Broadway and Trimble
Road facing signs
- Neighboring tenants
include Cici's, Palen
Music, State Farm

The above information is deemed to be accurate however it is subject to errors, omissions and change at any time.

For leasing information, contact

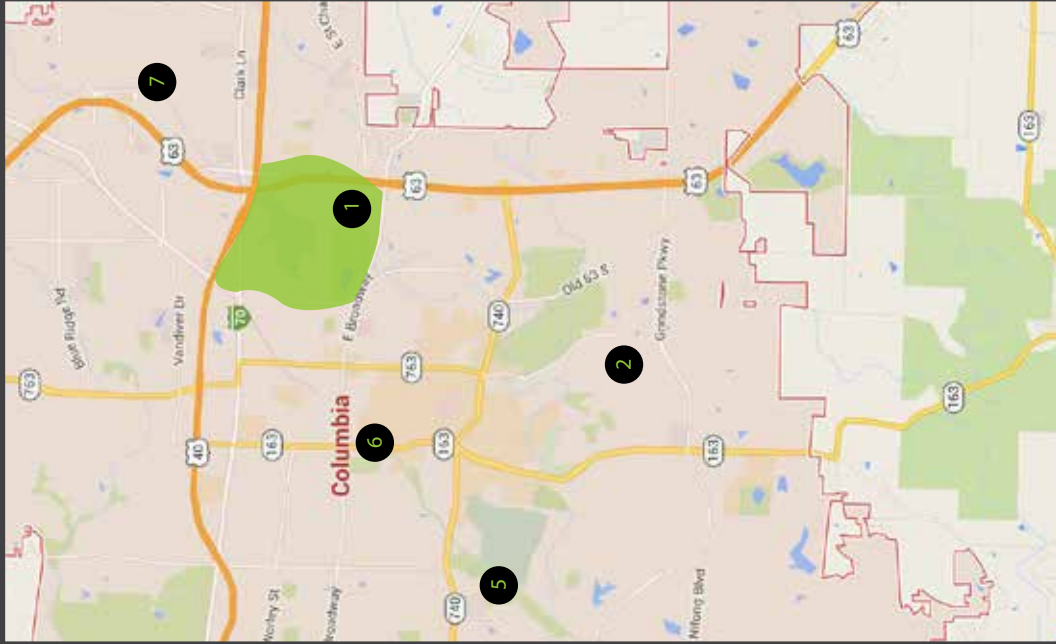
JAY LINDNER

jay@lindnerproperty.com

(573) 446-5500



EAST COLUMBIA TRADE AREA



Area Snapshot BROADWAY & HIGHWAY 63 > COLUMBIA, MO

Anchor Retailers

- Academy Sports + Outdoors
- Hy-Vee
- Lowe's
- Sam's Club
- Staples
- Walmart

Broadway & Highway 63 > Demographic Report				
	1-Mile Radius	3-Mile Radius	5-Mile Radius	
Population	4,462	62,513	118,785	
Households	2,339	26,082	50,677	
Household Income	\$65,920	\$53,862	\$65,844	
Total Daytime Population	14,723	106,395	166,808	

Broadway & Highway 63 > Major Employers	
	# of Employees
Boone Hospital Center	1,500
University of Missouri Women's and Children's Hospital	1,500
Keene Street Medical Corridor	750
Missouri Employers Mutual Insurance	291

EAST COLUMBIA TRADE AREA

BROADWAY & HIGHWAY 63

