

# ±161 ACRES FOR SALE

EXCLUSIVE LISTING | PINAL COUNTY, ARIZONA

**LOCATION** The property is located at the northeast corner of Africa Road & Burris Road in Pinal County, Arizona.

**SIZE** ±161.98 acres

**PRICE** \$1,500 per acre (\$242,970)

**PARCELS** 511-01-010F

**ZONING** GR, Pinal County

**TAXES** \$2,076.36 (2019)

## UTILITIES

Power – Arizona Public Service (APS)

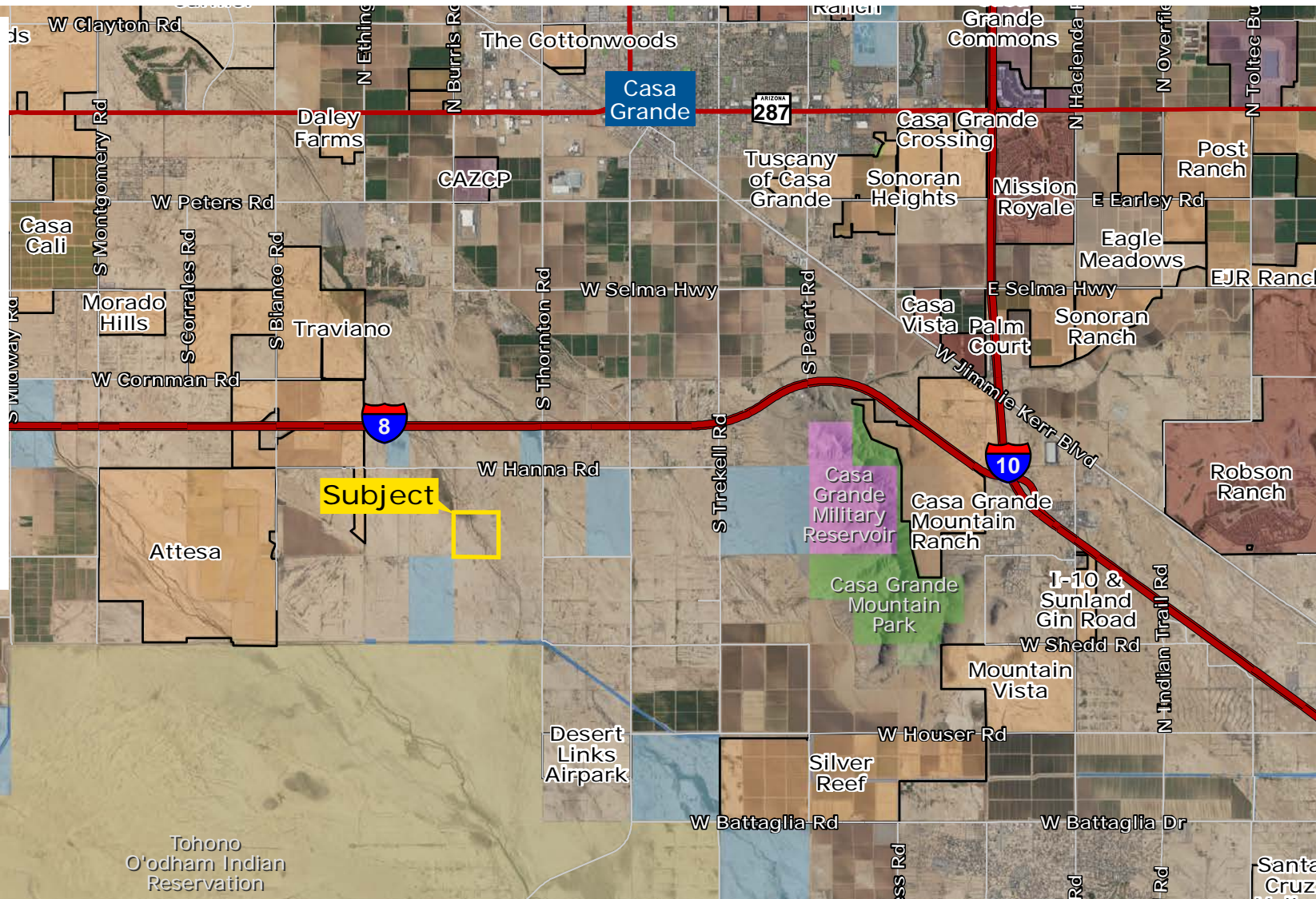
Water – Arizona Water Company

Gas – Southwest Gas Company

## SCHOOLS

Toltec Elementary School District

Casa Grande Unified High School District



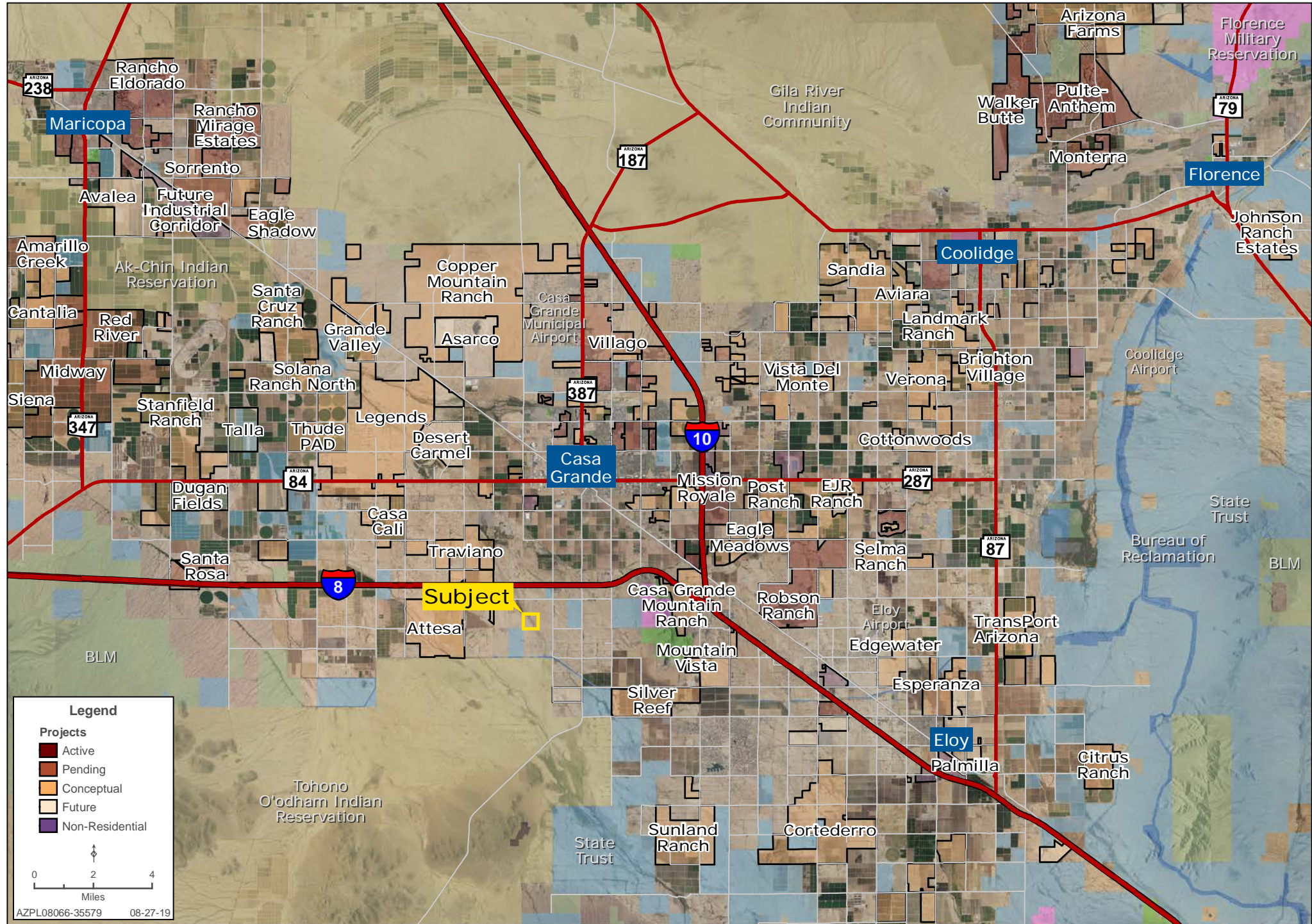
Kirk McCarville | [kmccarville@landadvisors.com](mailto:kmccarville@landadvisors.com)

442 W. Kortsen Road, Suite 203, Casa Grande, Arizona 85122 ph. 520.251.0348 | [www.landadvisors.com](http://www.landadvisors.com)

The information contained herein is from sources deemed reliable. We have no reason to doubt its accuracy but do not guarantee it. It is the responsibility of the person reviewing this information to independently verify it. This package is subject to change, prior sale or complete withdrawal. AZPL08066 - 8.27.19

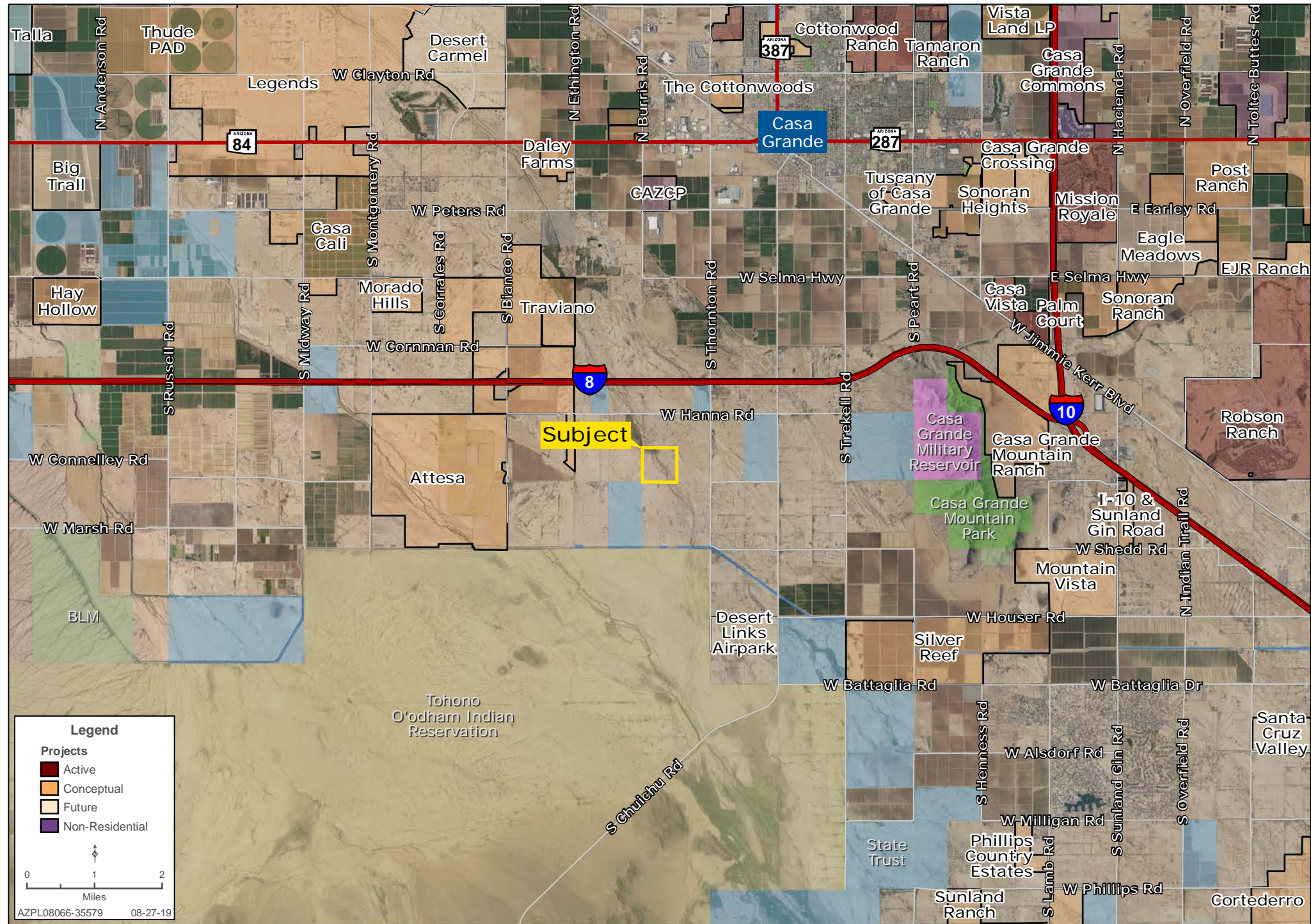
# REGIONAL MAP

Kirk McCarville | 480.483.8100 | www.landadvisors.com



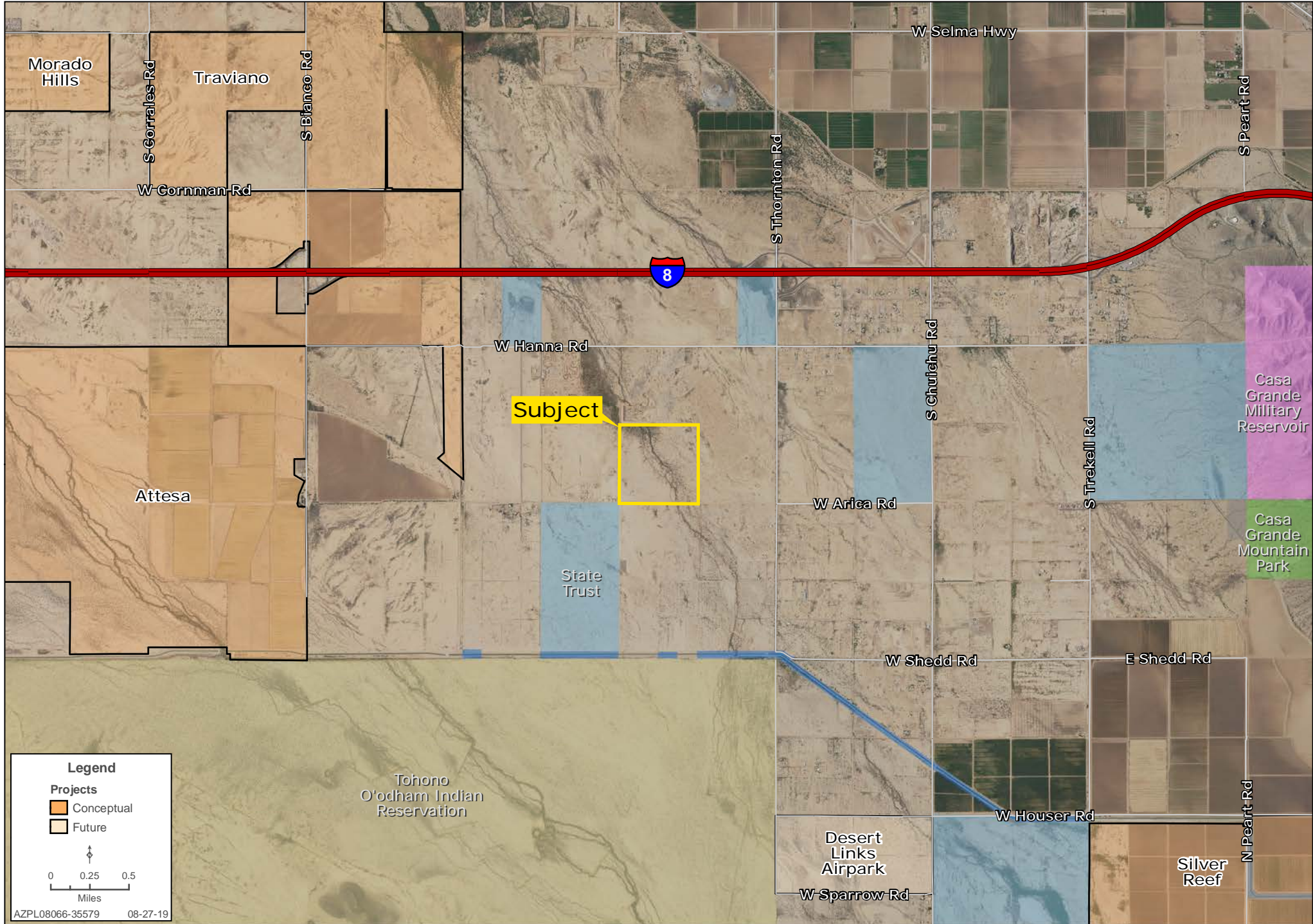
# SURROUNDING DEVELOPMENT MAP

Kirk McCarville | 480.483.8100 | www.landadvisors.com



# SURROUNDING AREA MAP

Kirk McCarville | 480.483.8100 | www.landadvisors.com



# PROPERTY DETAIL MAP

Kirk McCarville | 480.483.8100 | www.landadvisors.com

