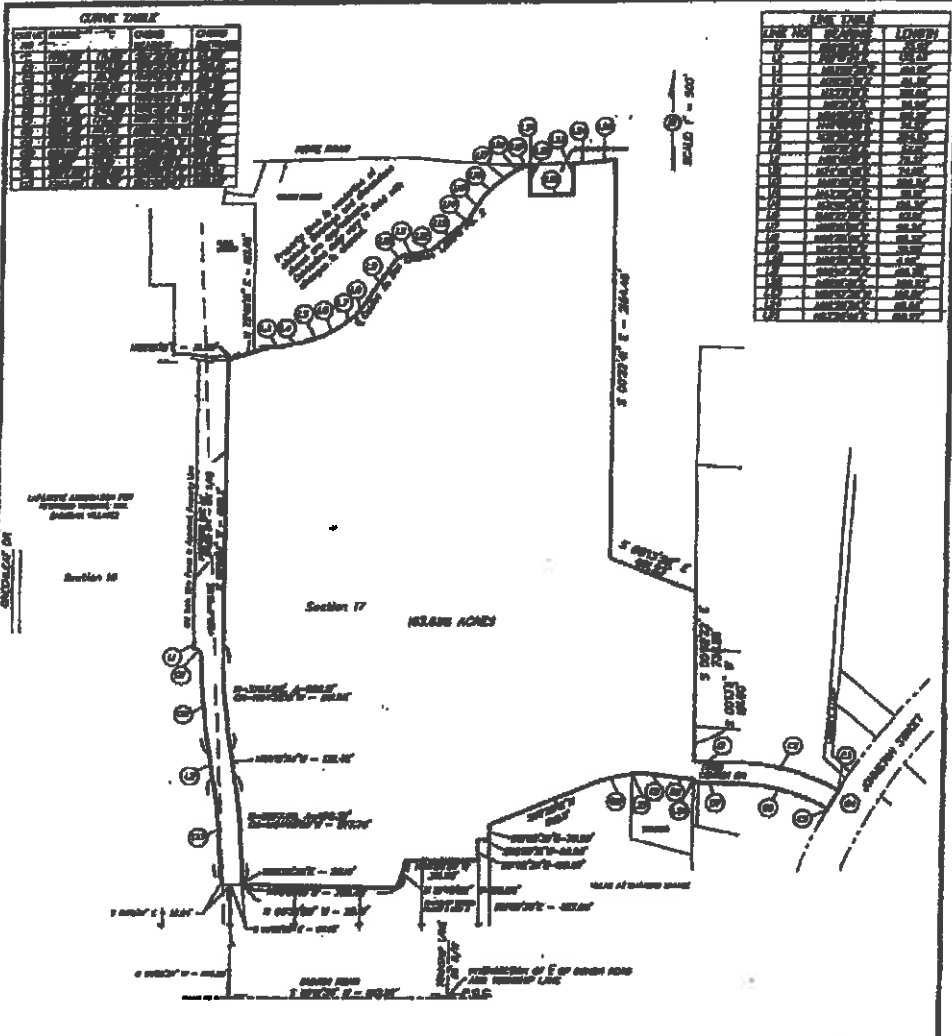


N





CHATEAU MIRAGE

LOCATED IN SECTIONS 17 AND 18, T10S, R4E,
CITY OF LAFAYETTE, LAFAYETTE PARISH, LOUISIANA

DATE OF PLAT:
DECEMBER 4, 2006

SCALE: 1" = 500'



Paul L. Miers
PAUL L. MIERS
P.L.S. REG NO 4811

PEM PAUL L. MIERS ENGINEERING, LLC

CIVIL ENGINEERS
104 WESTBANK BLVD, SUITE 2A
PHONE (337) 983-7782

LAND SURVEYORS
LAFAYETTE, LOUISIANA 70508
FAX(337) 983-7782

DATE	DESCRIPTION	BY
SPN	SPN	FILE B
		DWG