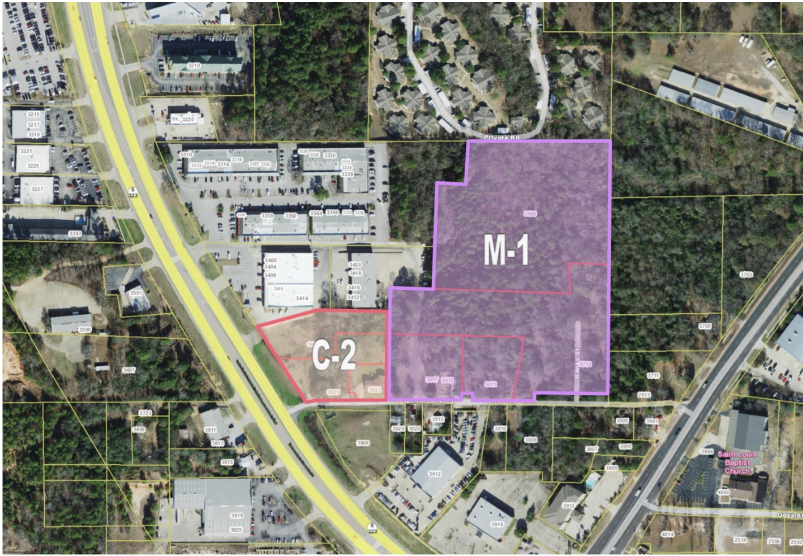


## SW Loop Commercial Development Tract

3460 SSW Loop 323, Tyler, TX 75701



### LOCATION



### Features

- Commercial Development Tract;Â Approx. 15 acres
- Frontage on Loop 323 and McCormick Ln.
- Zoned C-2 (Heavy Commercial) and M-1 (Heavy Industrial)
- Designated curb cut
- Great opportunity for retail, office or industrial development
- Neighboring businesses include:Â Â Harbor Freight, Peltier Nissan, JD Byrider, Enterprise Rent A Car, Hall Buick / GMC, PattersonÂ Chrysler Dodge

Â

### OFFICE/RETAIL LAND FOR SALE

Total Acres: 15  
Sales Price: \$699,000.00 Total Price

### Contact

**Casey Hymer**  
Founding Partner  
casey@draketexas.com

**Matthew Marshall**  
Founding Partner  
matthew@draketexas.com



**DRAKE**  
REAL ESTATE & INVESTMENTS

1537 E. Grande, Suite 400, Tyler, TX 75703  
903.581.3737 <http://drake-investments.com>