

AVAILABLE

580 WALNUT STREET

CINCINNATI, OHIO 45202

16,000 SF TO 48,000 SF FOR SUBLEASE



www.cbre.us/cincinnati

CBRE

FOR SUBLEASE 580 WALNUT STREET

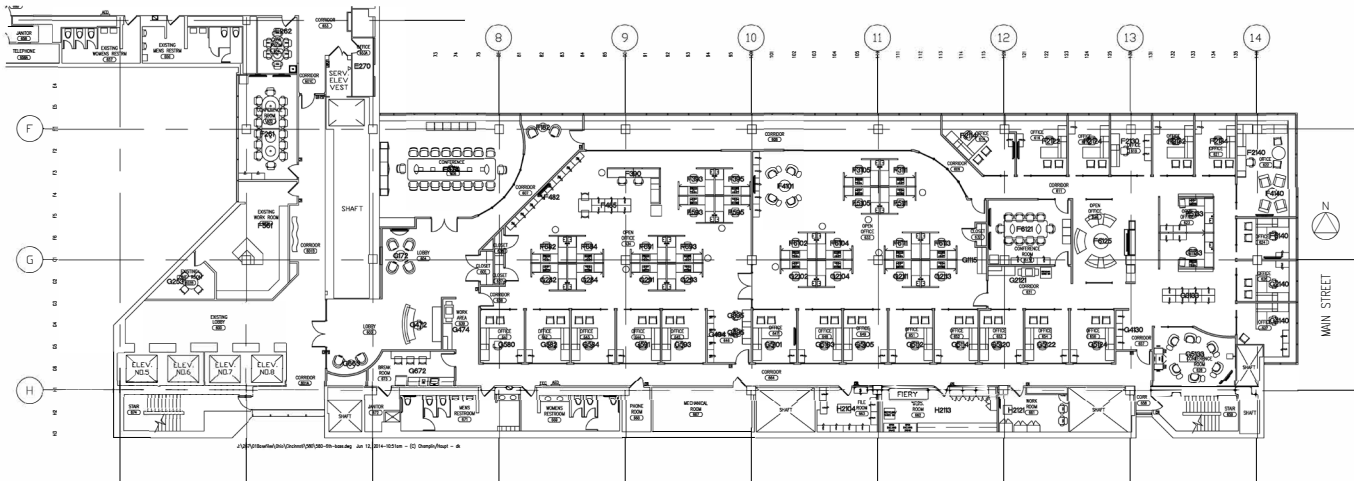


PROPERTY HIGHLIGHTS

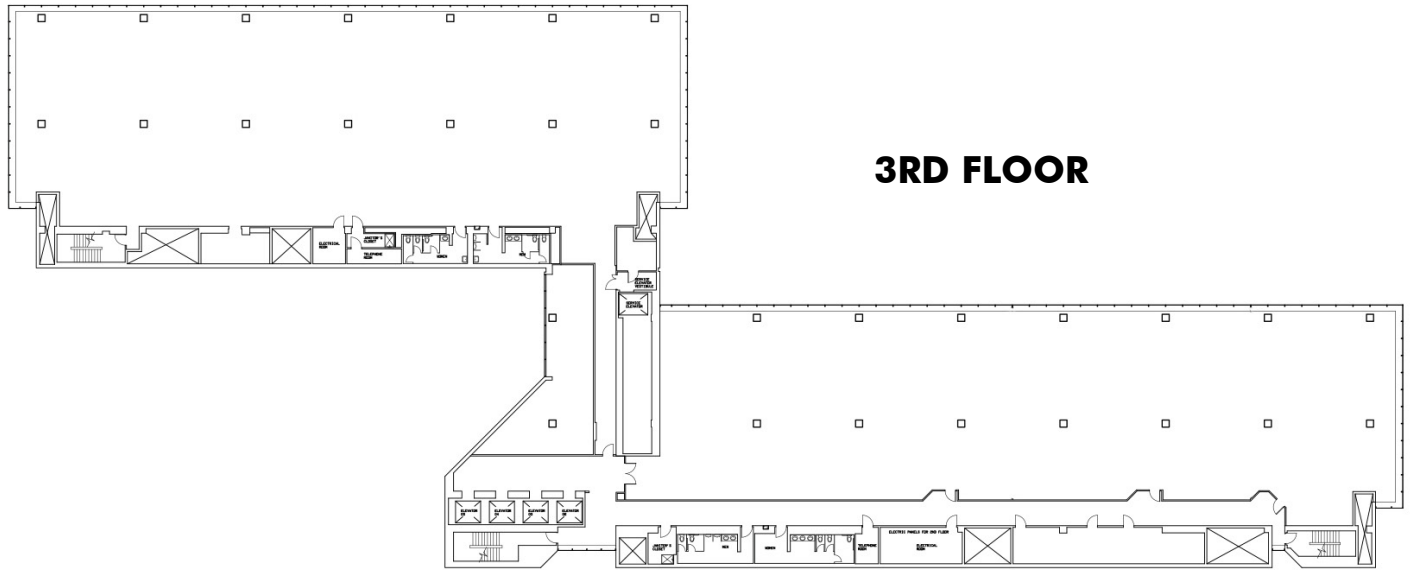
- + 16,000 SF to 48,000 SF Available
- + Large and Efficient Floor Plates
- + In the Hub of the Vibrant Business and Entertainment District at Sixth and Walnut Streets
- + Adjacent to Fountain Square, Arnoff Center, Contemporary Arts Center and 21c Museum Hotel
- + On Site Restaurants Include Starbucks, Silver Ladle, Mr. Sushi, O'Reillys, Prime and Wahlburgers
- + Recently Renovated Facade, Lobby and Retail Space
- + Master Lease Expires December 31, 2025

FOR SUBLEASE 580 WALNUT STREET

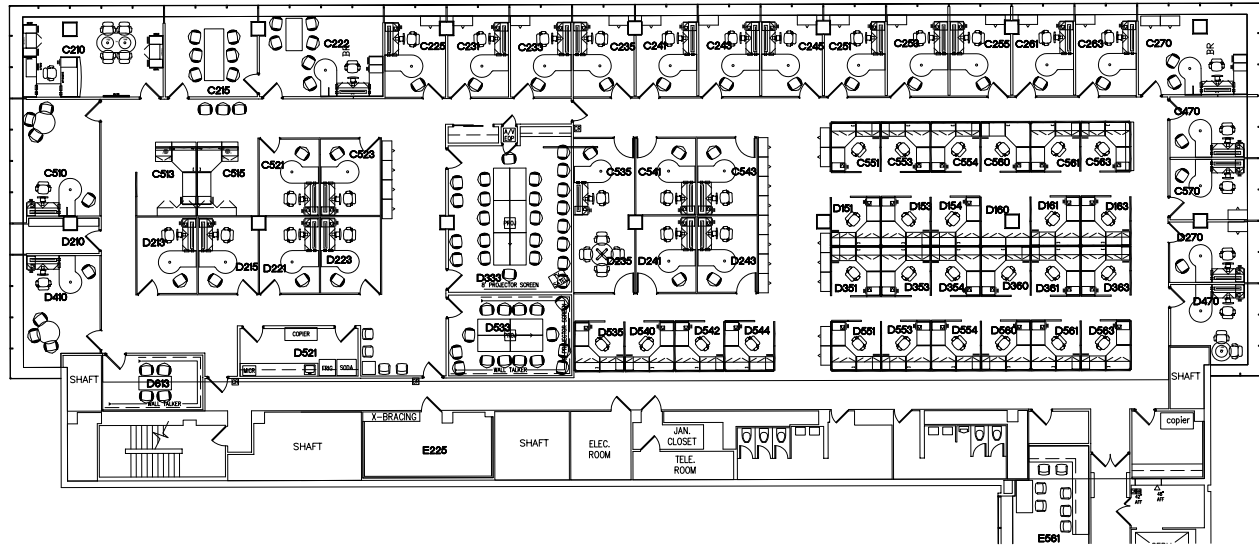
6TH FLOOR



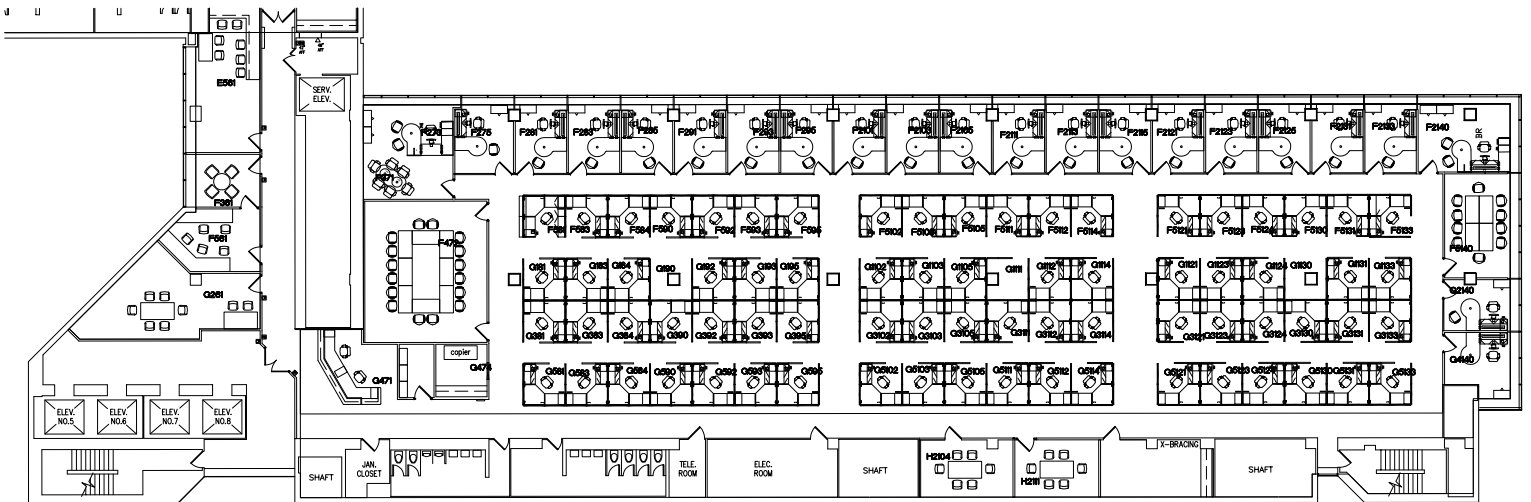
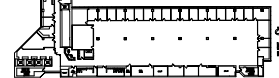
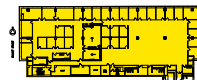
FOR SUBLEASE
580 WALNUT STREET



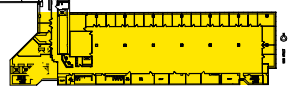
FOR SUBLEASE 580 WALNUT STREET



WEST

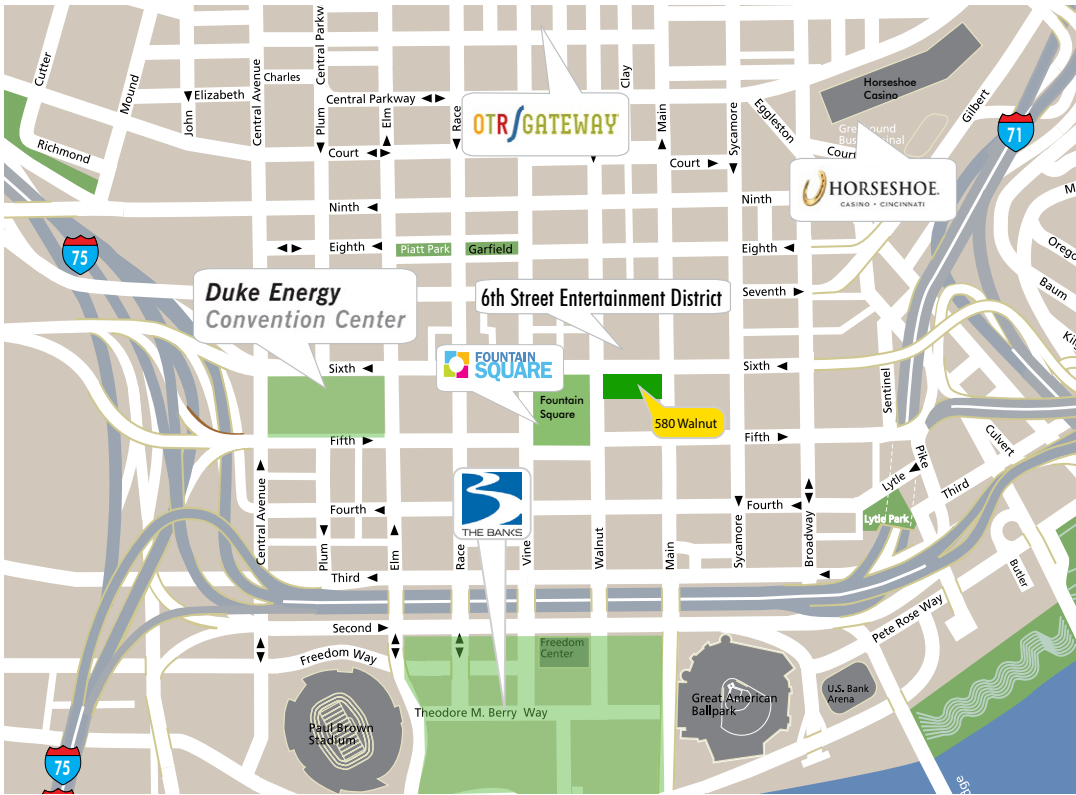


EAST



FOR SUBLEASE 580 WALNUT STREET

CINCINNATI AMENITIES



- Rock Bottom Brewery
- Via Vite
- Palamino
- Morton's
- McCormick and Schmick's
- Panera Bread
- Graeter's

6th Street Entertainment District

- Boca
- Nada
- Igby's
- Mr. Sushi
- Metropole
- Jeff Ruby's Steak House
- BRU Burger
- Sotto
- Nicholson's
- Wahlburger



THE BANKS
It's happening on the river.

- Condado Tacos
- Ruth's Chris Steak House
- Holy Grail
- Yard House
- Burger Fi
- Jefferson Social
- Moerlein Lager House
- Jimmy Johns
- Pies & Pints
- Taste of Belgium
- The Stretch
- Tin Roof

CBRE



CONTACT US

JOHN ECKERT

Senior Vice President
+1 513 369 1321
john.eckert@cbre.com

SCOTT YARDS, CCIM

Senior Vice President
+1 513 369 1313
scott.yards@cbre.com

© 2018 CBRE, Inc. All rights reserved. This information has been obtained from sources believed reliable, but has not been verified for accuracy or completeness. You should conduct a careful, independent investigation of the property and verify all information. Any reliance on this information is solely at your own risk. CBRE and the CBRE logo are service marks of CBRE, Inc. All other marks displayed on this document are the property of their respective owners. Photos herein are the property of their respective owners. Use of these images without the express written consent of the owner is prohibited.

www.cbre.us/cincinnati

CBRE