

900
WILSHIRE BLVD

FOR LEASE

SANTA MONICA PENTHOUSE



CLICK HERE FOR
PROPERTY VIDEO

CREATIVE OFFICE
OR MEDICAL OFFICE



DANIEL CHIPRUT
EXECUTIVE VICE PRESIDENT
310.800.7955 | daniel@cag-re.com
CA RE Lic. #01808709



STEVEN SALAS
SENIOR MANAGING DIRECTOR
310.407.6569 | steven.salas@ngkf.com
CA RE Lic. #01232955

900 WILSHIRE BLVD

FOR LEASE

ASKING RATE:

\$6.50/SF MG

TERM:

5 - 10 Years

PARKING:

4/1,000 SF
at Fair Market Rates

BUILDING SIZE:

±45,000 SF

AVAILABILITY:

4th Floor/Penthouse: ±14,700 SF
(Divisible down to ±2,000 SF)

TENANT IMPROVEMENTS:

Negotiable



900 WILSHIRE BLVD

FOR LEASE

PROPERTY HIGHLIGHTS



- Abundant natural light, balconies, ocean views and high ceilings
- Penthouse full floor medical space opportunity
- Newest building in Santa Monica
- Largest contiguous block of medical space in Santa Monica
- World renowned co-tenancy:
 - Kao Plastic Surgery:
<https://www.kaoplasticsurgery.com/>
 - Dr. Aaron Filler:
www.nervemed.com
- Santa Monica UCLA Medical Center & Providence Saint John's Medical Center within a few blocks away

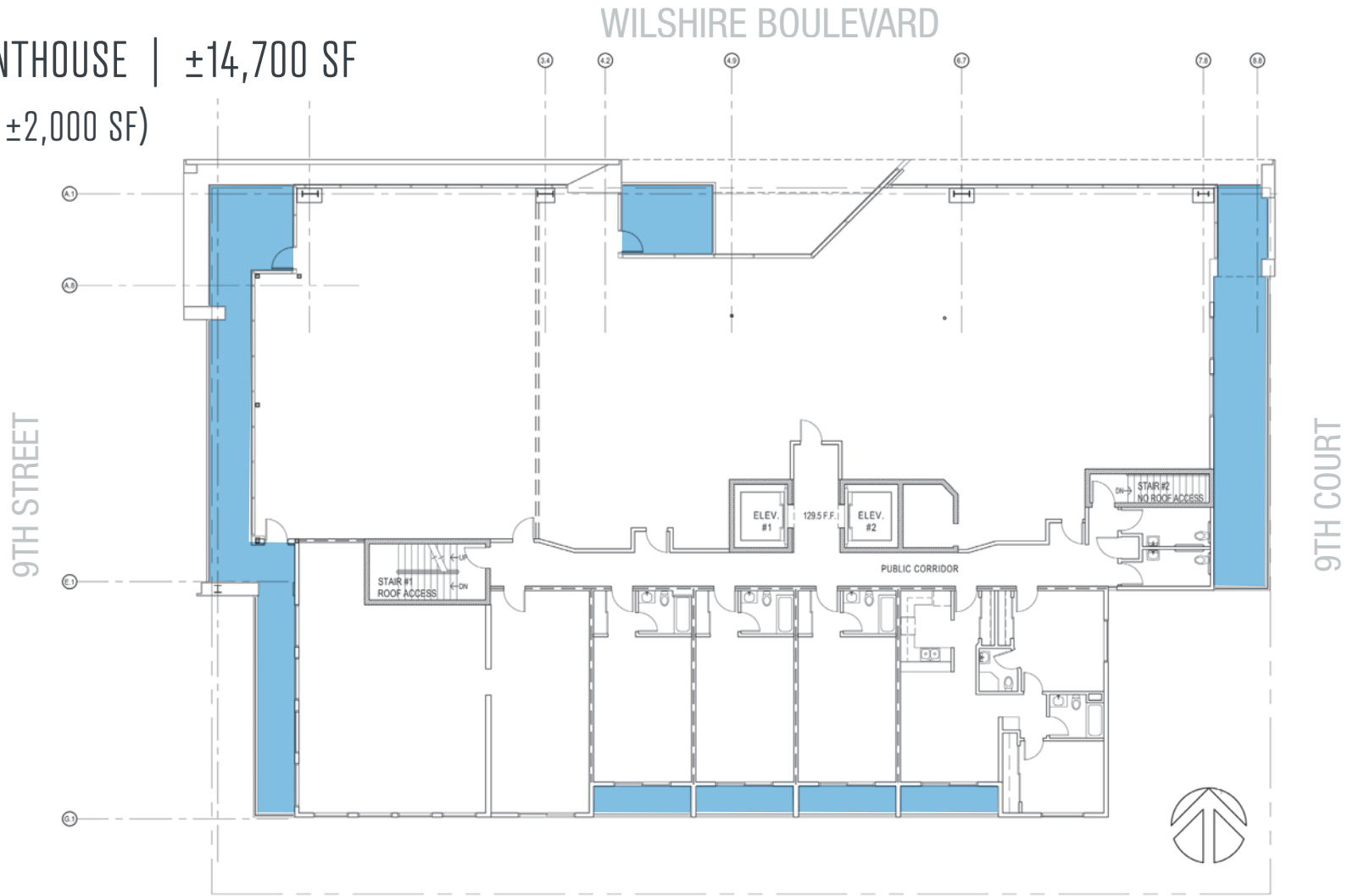


900 WILSHIRE BLVD

FOR LEASE

FLOORPLAN

4TH FLOOR/PENTHOUSE | $\pm 14,700$ SF
(Divisible down to $\pm 2,000$ SF)



■ Balcony Space

900 WILSHIRE BLVD

FOR LEASE

PROPERTY IMAGES



900 WILSHIRE BLVD

FOR LEASE

AREA HOTELS & LANDMARKS



900 WILSHIRE BLVD

FOR LEASE

AMENITIES MAP



SANTA MONICA PIER

Calabra

SUPERFOOD CAFE

tocaya

MENDOCINO FARMS
sandwich market

CHASE

Sidecar

BLUESTONE LANE

THE COFFEE BEAN
& TEA LEAF



SEMPRE
A CUCINA ITALIANA

FedEx

EL CHINO
EST. 1952

RUSTIC CANYON

UPS

UNITED STATES
POSTAL SERVICE

VONS

RITE AID

GLOVEWORX

UCLA Santa Monica-UCLA
Medical Center

BANK OF AMERICA

Sushi King

DUNKIN'
DONUTS

Melisse

Starbucks

BELCAMPO
MEAT CO.

Huckleberry

SANTA MONICA
PIZZERIA

Charles
SCHWAB

Spitz Coffee

DAGWOODS



900 WILSHIRE BLVD

FOR LEASE

SELECTED NEIGHBORS



RUSTIC CANYON



BELCAMPO RESTAURANT & BUTCHER SHOP



SANTA MONICA SEAFOOD



SIDECAR DOUGHNUTS & COFFEE



MELISSE



BLUESTONE LANE SANTA MONICA COFFEE SHOP



EL CHOLO



CALABRA

900 WILSHIRE BLVD

FOR LEASE

DANIEL CHIPRUT

SENIOR MANAGING DIRECTOR

COMMERCIAL ASSET GROUP

310.800.7955 | daniel@cag-re.com

CA RE Lic. #01808709

STEVEN SALAS

SENIOR MANAGING DIRECTOR

NEWMARK KNIGHT FRANK

310.407.6569 | steven.salas@ngkf.com

CA RE Lic. #01232955

Newmark Knight Frank | 1875 Century Park East, Suite 1380 | Los Angeles, CA 90067 | Corporate CA RE Lic. #01355491



Procuring broker shall only be entitled to a commission, calculated in accordance with the rates approved by our principal only if such procuring broker executes a brokerage agreement acceptable to us and our principal and the conditions as set forth in the brokerage agreement are fully and unconditionally satisfied. Although all information furnished regarding property for sale, rental, or financing is from sources deemed reliable, such information has not been verified and no express representation is made nor is any to be implied as to the accuracy thereof and it is submitted subject to errors, omissions, change of price, rental or other conditions, prior sale, lease or financing, or withdrawal without notice and to any special conditions imposed by our principal.

