

FOR LEASE



901 - 911 Hacienda Dr.

Vista, CA 92081

\$1.15 - \$1.65 PSF Gross + E/J

First Floor: 1,050 - 3,900 SF available

Second Floor: 1,680 SF available

NEW Major Renovations Recently Completed

- Turn-Key and Build-to-Suit Suites Available
- FREEWAY Monument Signage Available
 - Prominent Visibility from Highway 78
 - Affordable Rental Rates
 - New Landscaping Throughout Project
- Great for Professional Offices or Medical Offices



126,769

Cars Per Day @ Highway 78

8,385

Cars Per Day @ Hacienda Drive

This information is compiled from data which we believe to be correct but no liability is assumed by this company as to accuracy of such data. v17

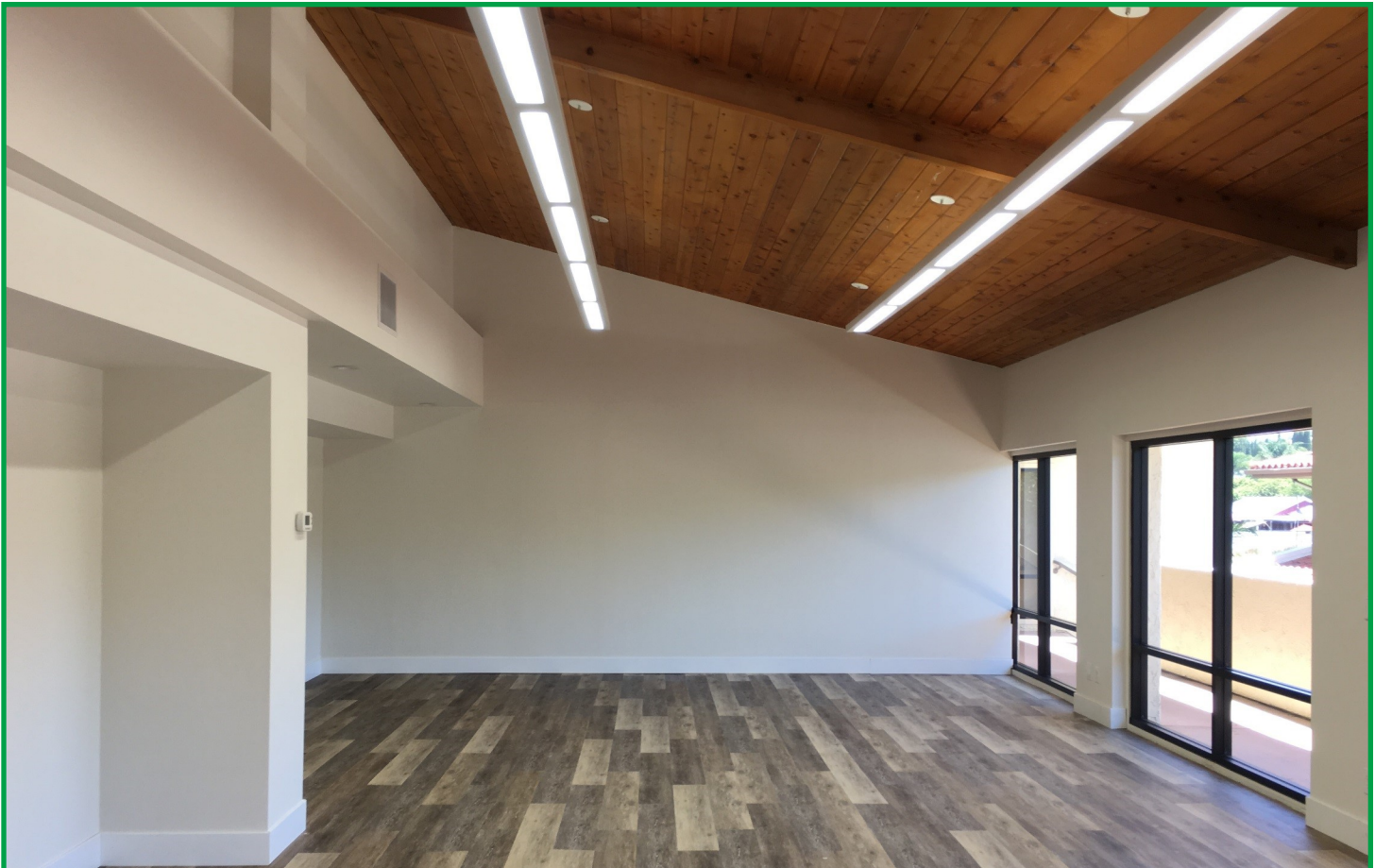
Nick Zech #01721457
858.232.2100
nzech@cdccommercial.com

Matt Orth #01857155
858.736.1337
morth@cdccommercial.com

CDC
COMMERCIAL, Inc.
www.cdccommercial.com

Available Suites

SUITE	FLOOR	SF	DESCRIPTION
911A	1st	1,050 SF	Reception, 5 Private Offices, & Small Open Office Area. Spec Improvements, LED Lighting throughout, New Carpet & Paint throughout, Option to convert 1 Office to Break Room. ***CAN COMBINE 911A & 911B for 3,900 SF***
911B	1st	2,850 SF	BUILD-TO-SUIT OPTIONS AVAILABLE. Existing: Large Open Office, 2 Private Offices, Conference, Large Break Room, Private Restroom, Reception ***CAN COMBINE 911A & 911B for 3,900 SF***
911D	2nd	1,680 SF	Large Open Office, 3 Private Offices, Conference/Break Room. Spec Improvements, LED Lighting throughout, New VCT Wood Finish Flooring in Open Area + New Carpet & Paint.



This information is compiled from data which we believe to be correct but no liability is assumed by this company as to accuracy of such data. v17

Nick Zech #01721457
858.232.2100
nzech@cdccommercial.com

Matt Orth #01857155
858.736.1337
morth@cdccommercial.com



Available Suites - First Floor

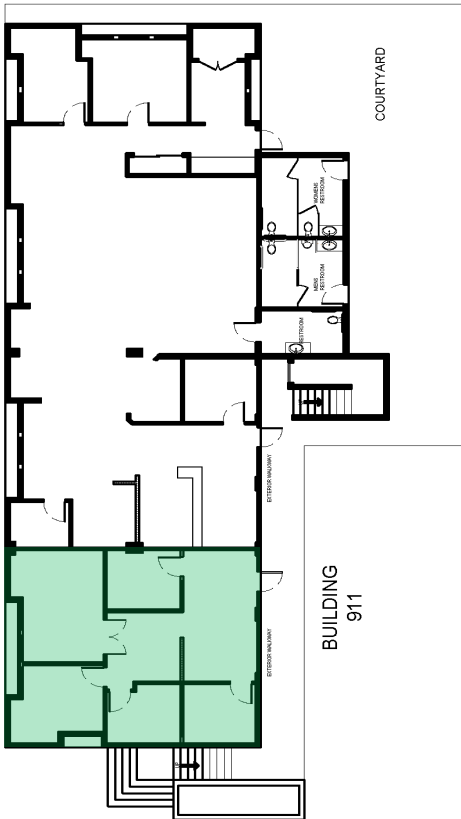
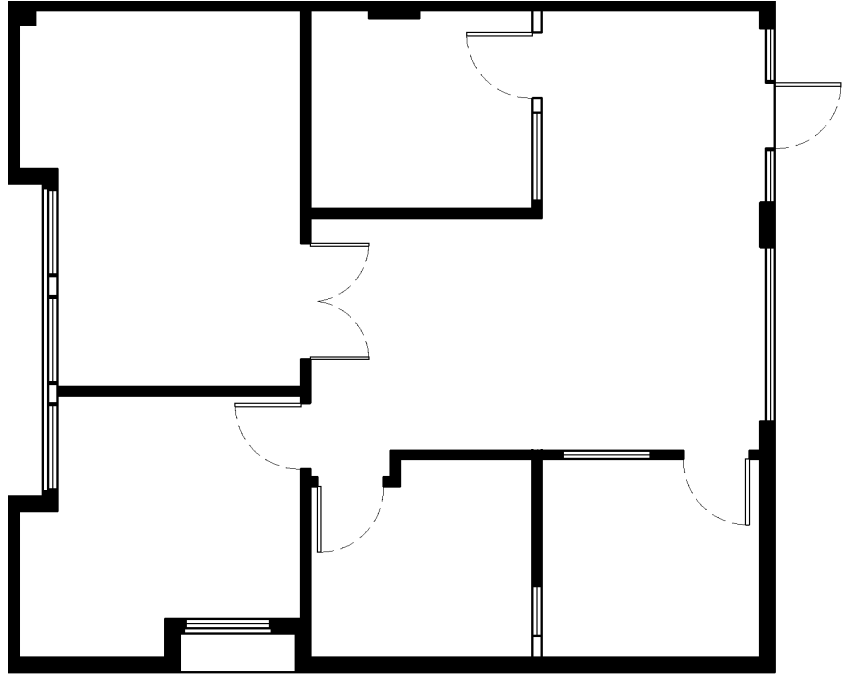
Suite 911A

Size: 1,050 RSF

First Floor Unit

Common Area Restrooms

*Can assemble suites
911A & 911B for total of
3,900 SF*



This information is compiled from data which we believe to be correct but no liability is assumed by this company as to accuracy of such data. v17

Nick Zech #01721457
858.232.2100
nzech@cdccommercial.com

Matt Orth #01857155
858.736.1337
morth@cdccommercial.com



Available Suites - First Floor

Suite 911B

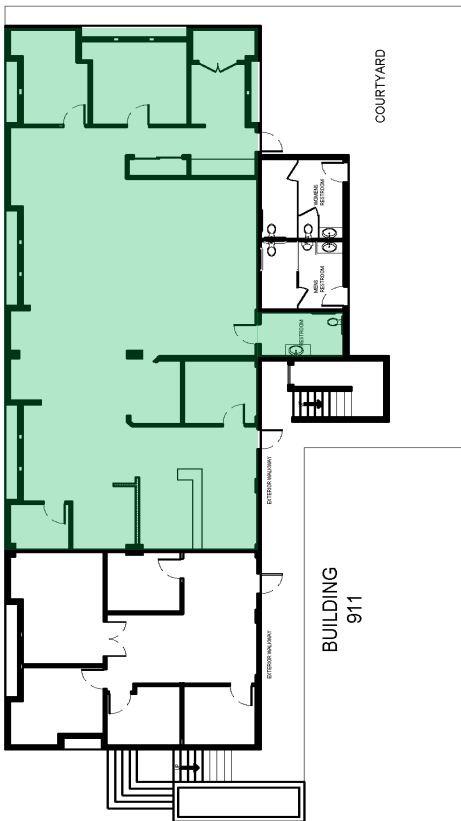
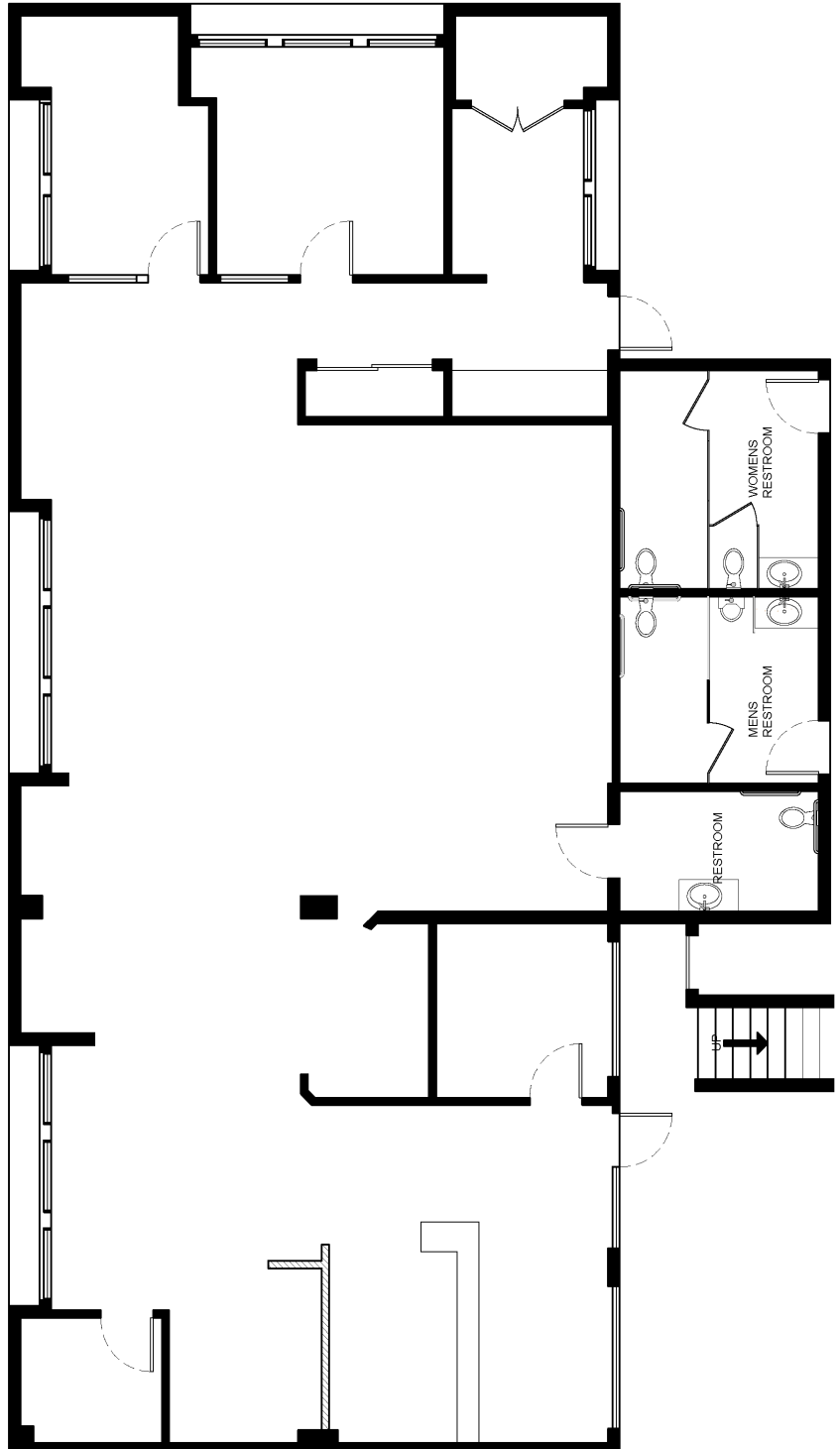
Size: 2,850 RSF

First Floor Unit

Private and Common Area
Restrooms

Courtyard Access

*Can assemble suites
911A & 911B for total of
3,900 SF*



This information is compiled from data which we believe to be correct but no liability is assumed by this company as to accuracy of such data. v17

Nick Zech #01721457
858.232.2100
nzech@cdccommercial.com

Matt Orth #01857155
858.736.1337
morth@cdccommercial.com



Available Suites - Second Floor

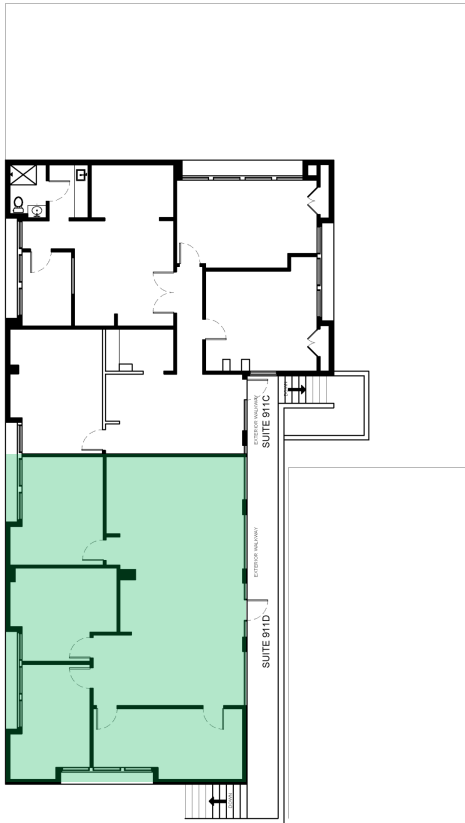
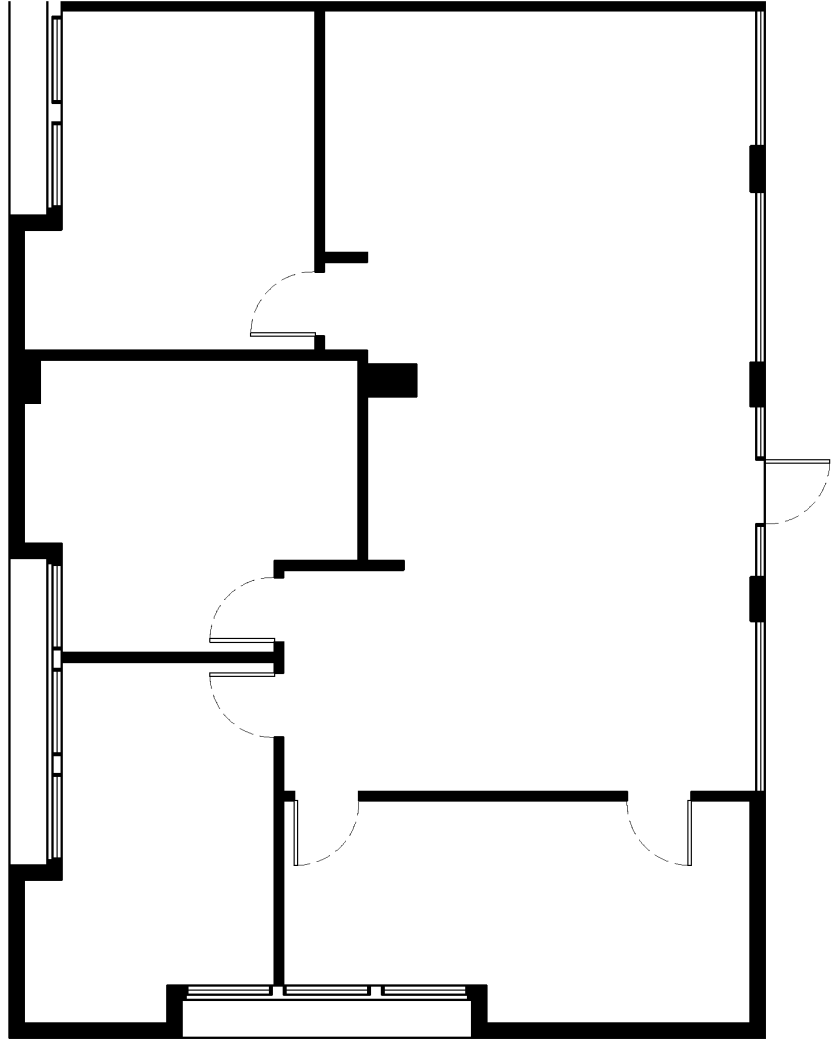
Suite 911D

Size: 1,680 RSF

Second Floor Unit

Common Area Restrooms

***Recently Renovated
Space with Spec
Improvements***



This information is compiled from data which we believe to be correct but no liability is assumed by this company as to accuracy of such data. v17

Nick Zech #01721457
858.232.2100
nzzech@cdccommercial.com

Matt Orth #01857155
858.736.1337
morth@cdccommercial.com





This information is compiled from data which we believe to be correct but no liability is assumed by this company as to accuracy of such data. v17

Nick Zech #01721457
858.232.2100
nzech@cdccommercial.com

Matt Orth #01857155
858.736.1337
morth@cdccommercial.com