

CLASS A OFFICE TOWER  
AVAILABLE FOR LEASE

**3300**  
NORTH CENTRAL  
PHOENIX, AZ





# 3300

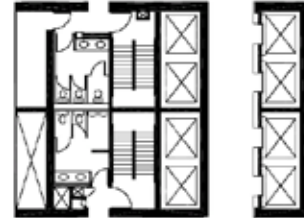
NORTH CENTRAL



## TYPICAL FLOOR PLATE

±14,146 RSF

NOT TO SCALE



Highly efficient floor plates  
±14,146 RSF

Four sides of glass, offering 360-degree views  
of the entire valley

Exterior column plan  
providing ultimate efficiency







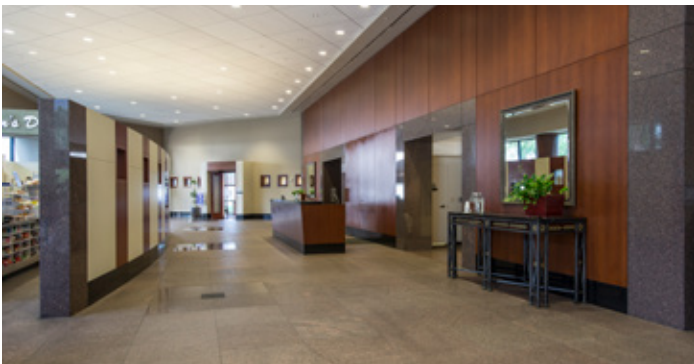
**MAJOR PLAZA  
RENOVATIONS COMPLETE**



**NEW SIGNAGE  
PACKAGE**



**ONSITE GYM**



## BUILDING STATS

- ±363,655 SF 26-story class a office tower
- Exceptional views of Midtown, Downtown, Camelback Mountain, Piestewa Peak & Tempe
- Onsite fitness center & business lounge located on the 11th floor
- Professional, onsite property management by CBRE
- Onsite restaurant and espresso bar
- Major signage opportunities available
- 3.3/1,000 SF parking available in adjacent parking garage
- Abundant fiber providers including Level3, Western Wimax, American Broadband and GTT

## LOCATION FACTS

### LOCATED

in the amenity rich  
Central Avenue  
Corridor

### SUPERIOR WALKABILITY

with access to  
abundant restaurants,  
shops & amenities

### DIRECT ACCESS TO DOWNTOWN

Phoenix, Sky Harbor  
International Airport  
& Downtown Tempe

### EXCELLENT FREEWAY ACCESS

to I-10, I-17  
& SR-51

### CLOSE TO EXECUTIVE HOUSING

in North Central Phoenix  
& Camelback Corridor

## LOCATION AMENITIES



TACO GUILD



**BEST of PHILLY**

**FLOWER CHILD**  
HEALTHY FOOD FOR A HAPPY WORLD



**STARBUCKS**



**Please contact the leasing team for information:**

**Corey Hawley**

First Vice President

602-735-1742

corey.hawley@cbre.com

**Jimmy Cornish**

Sales Assistant

602-735-1741

james.cornish@cbre.com

**3300**  
NORTH CENTRAL  
PHOENIX, AZ



**CBRE**

© 2018 CBRE, Inc. All rights reserved. This information has been obtained from sources believed reliable, but has not been verified for accuracy or completeness. Any projections, opinions, or estimates are subject to uncertainty. The information may not represent the current or future performance of the property. You and your advisors should conduct a careful, independent investigation of the property and verify all information. Any reliance on this information is solely at your own risk. CBRE and the CBRE logo are service marks of CBRE, Inc. and/or its affiliated or related companies in the United States and other countries. All other marks displayed on this document are the property of their respective owners. Photos herein are the property of their respective owners and use of these images without the express written consent of the owner is prohibited.