

FOR LEASE

52 Arch Street  
Redwood City, CA



#### SUITE 4

±700 SF (Can combine with suite 5 for ±1,400 SF)

3 exam rooms with sinks

Office, reception/nurse station, waiting room

1 lab with a sink or kitchenette

2 reserved parking spaces

Former Dental Office, has connections available

Available now

#### SUITE 5

±700 SF (Can combine with suite 4 for ±1,400 SF)

4 exam rooms (3 with sinks), currently medical office

Nurse/file room

Storage closet

2 reserved parking spaces

Room with sink hook up for dental lab or kitchenette

Available June 1, 2017

#### CONTACT

**Janice Hennessey**  
Vice President  
415.229.8950  
janiceh@kiddermathews.com  
LIC #01464169



# FOR LEASE

# 52 Arch Street

## SUITE 4



## CONTACT

**Janice Hennessey**  
Vice President  
415.229.8950  
janiceh@kiddermathews.com  
LIC #01464169



# FOR LEASE

# 52 Arch Street

## SUITE 5



## CONTACT

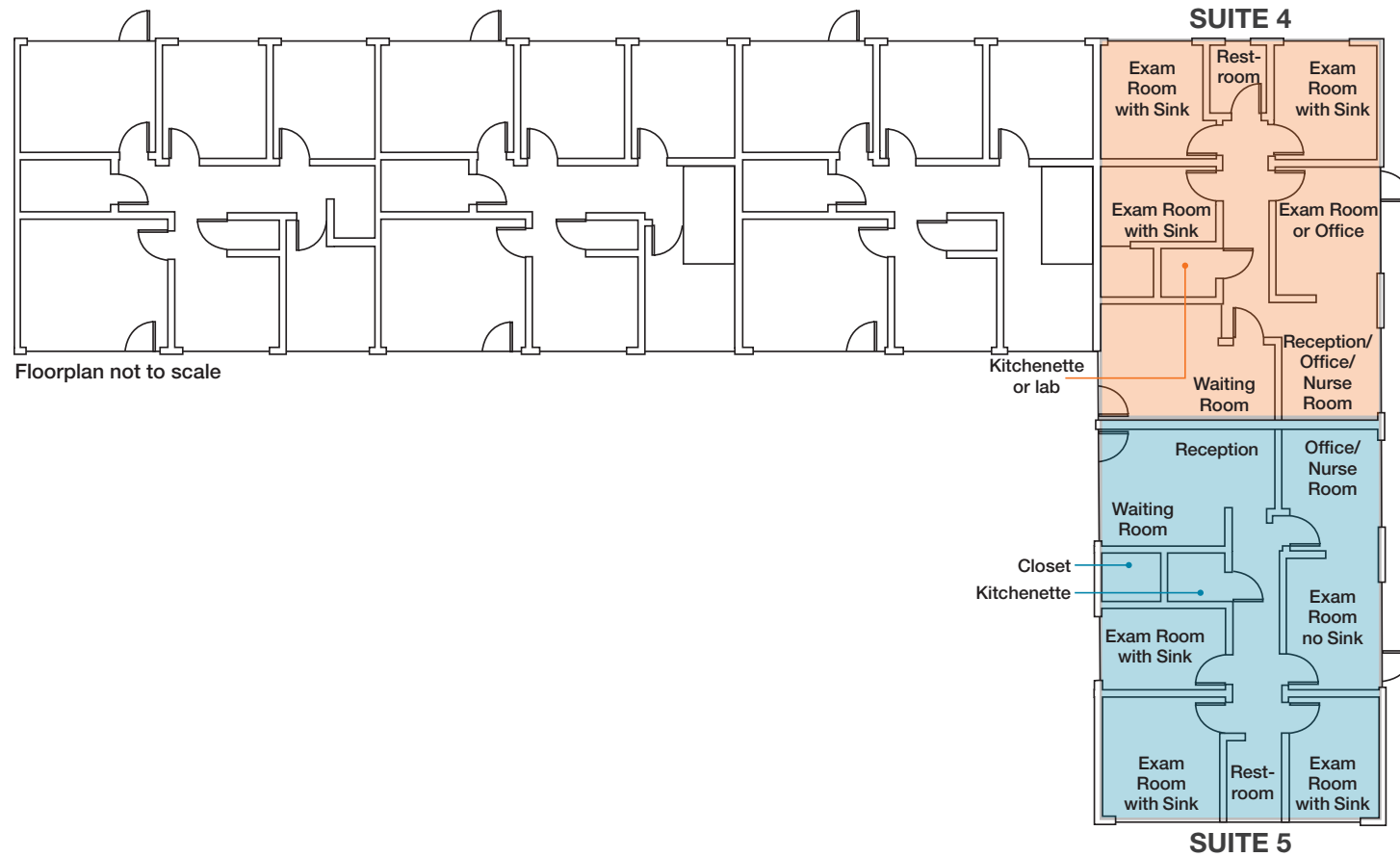
**Janice Hennessey**  
Vice President  
415.229.8950  
janiceh@kiddermathews.com  
LIC #01464169



# FOR LEASE

# 52 Arch Street

## FLOORPLAN



Floorplan not to scale

## CONTACT

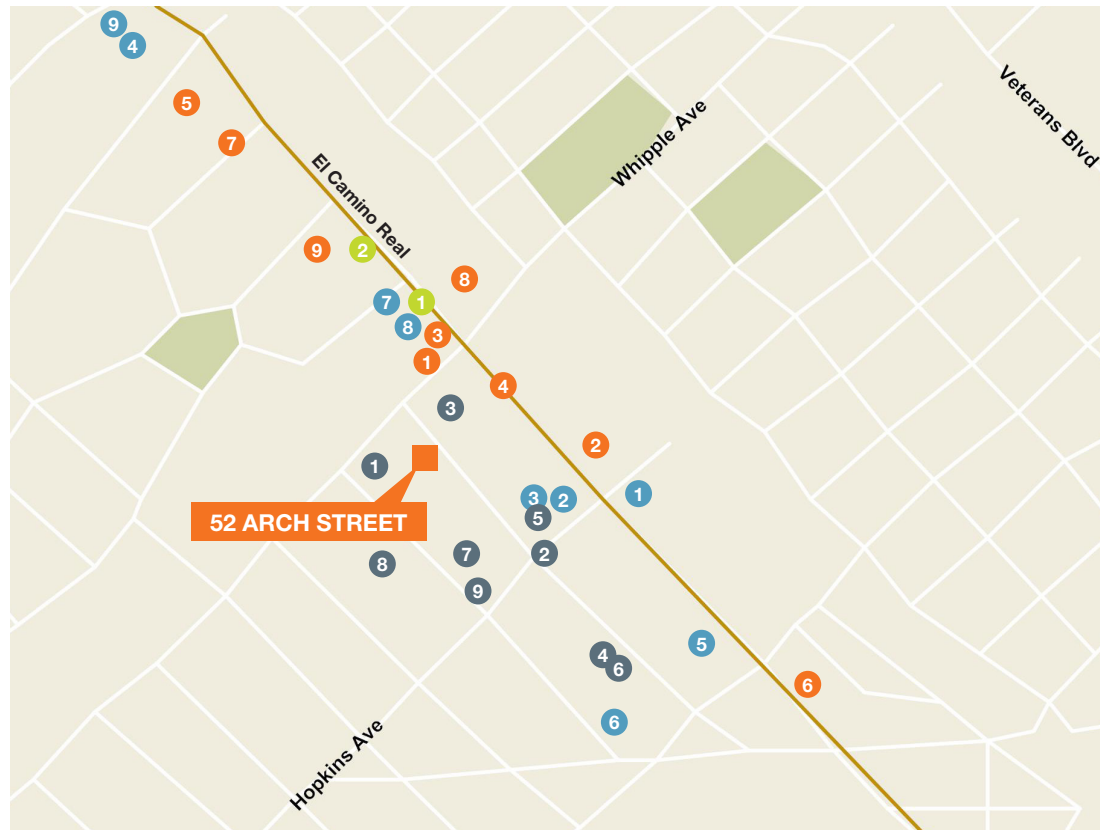
**Janice Hennessey**  
Vice President  
415.229.8950  
janiceh@kiddermathews.com  
LIC #01464169



# FOR LEASE

# 52 Arch Street

## FLOORPLAN



## CONTACT

**Janice Hennessey**  
 Vice President  
 415.229.8950  
 janiceh@kiddermathews.com  
 LIC #01464169

Restaurants	Shopping	Hotels	Health Centers
1 Pasta Pomodoro	1 Honda Redwood City	1 Sequoia Inn	1 Yang Orthodontics
2 Burger King	2 Sleep Number	2 Best Western Inn	2 Lotus Dental Care
3 Starbucks	3 UPS Store		3 Stephen Lindblom, DDS
4 Higuma Japanese	4 Trader Joe's		4 Michelle Lacues, DDS
5 Johnston's Saltbox	5 Brothers' Furniture		5 Sheila Kodani, DDS
6 I Dumpling	6 Piazza's Fine Foods		6 Charles Caruana, DDS
7 3 Pigs BBQ	7 7-11		7 Greg Ding, DDS
8 Ben Frank's	8 FedEx		8 Elite Dental
9 Stack's	9 Walgreens		9 James Killen, DDS

