

# Creative Office Space in Downtown San Carlos

1622 San Carlos Avenue, Suite C

San Carlos, CA



## ±1,460 Square Feet Available

As exclusive agent(s), we are pleased to offer the following space:



- ◆ 3 Private Offices
- ◆ Conference Room
- ◆ Open Area
- ◆ Kitchen
- ◆ Abundant Natural Light
- ◆ 3 Blocks from Caltrain Station
- ◆ Close Proximity to Amenities
- ◆ Available Now
- ◆ LED: 11/30/2019
- ◆ Direct Deal Available
- ◆ Potential for Additional Space in the Project
- ◆ Rental Rate: \$3.65/sf Gross



**Deborah O'Reilly** 650.358.5256 [doreilly@ngkf.com](mailto:doreilly@ngkf.com) CA RE License #01895522  
**Craig Kalinowski** 650.358.5287 [ckalinowski@ngkf.com](mailto:ckalinowski@ngkf.com) CA RE License #01260870

2950 South Delaware Street, Suite 125, San Mateo, CA 94403

[www.ngkf.com](http://www.ngkf.com)

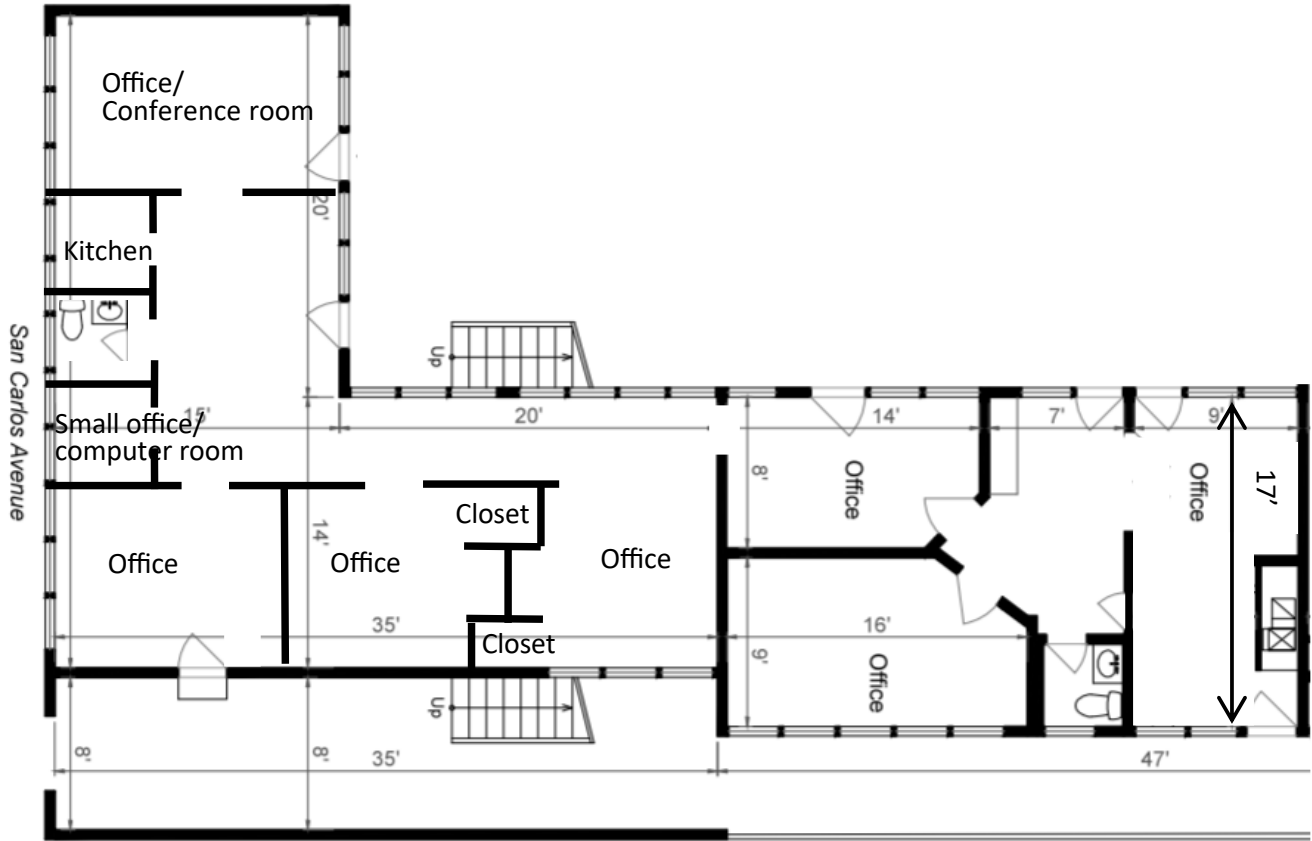
The distributor of this communication is performing acts for which a real estate license is required. The information contained herein has been obtained from sources deemed reliable but has not been verified and no guarantee, warranty or representation, either express or implied, is made with respect to such information. Terms of sale or lease and availability are subject to change or withdrawal without notice.

18-1192 • 03/19

# Creative Office Space in Downtown San Carlos

1622 San Carlos Avenue, Suite C

San Carlos, CA



**Deborah O'Reilly** 650.358.5256 [doreilly@ngkf.com](mailto:doreilly@ngkf.com) CA RE License #01895522  
**Craig Kalinowski** 650.358.5287 [ckalinowski@ngkf.com](mailto:ckalinowski@ngkf.com) CA RE License #01260870

2950 South Delaware Street, Suite 125, San Mateo, CA 94403

[www.ngkf.com](http://www.ngkf.com)

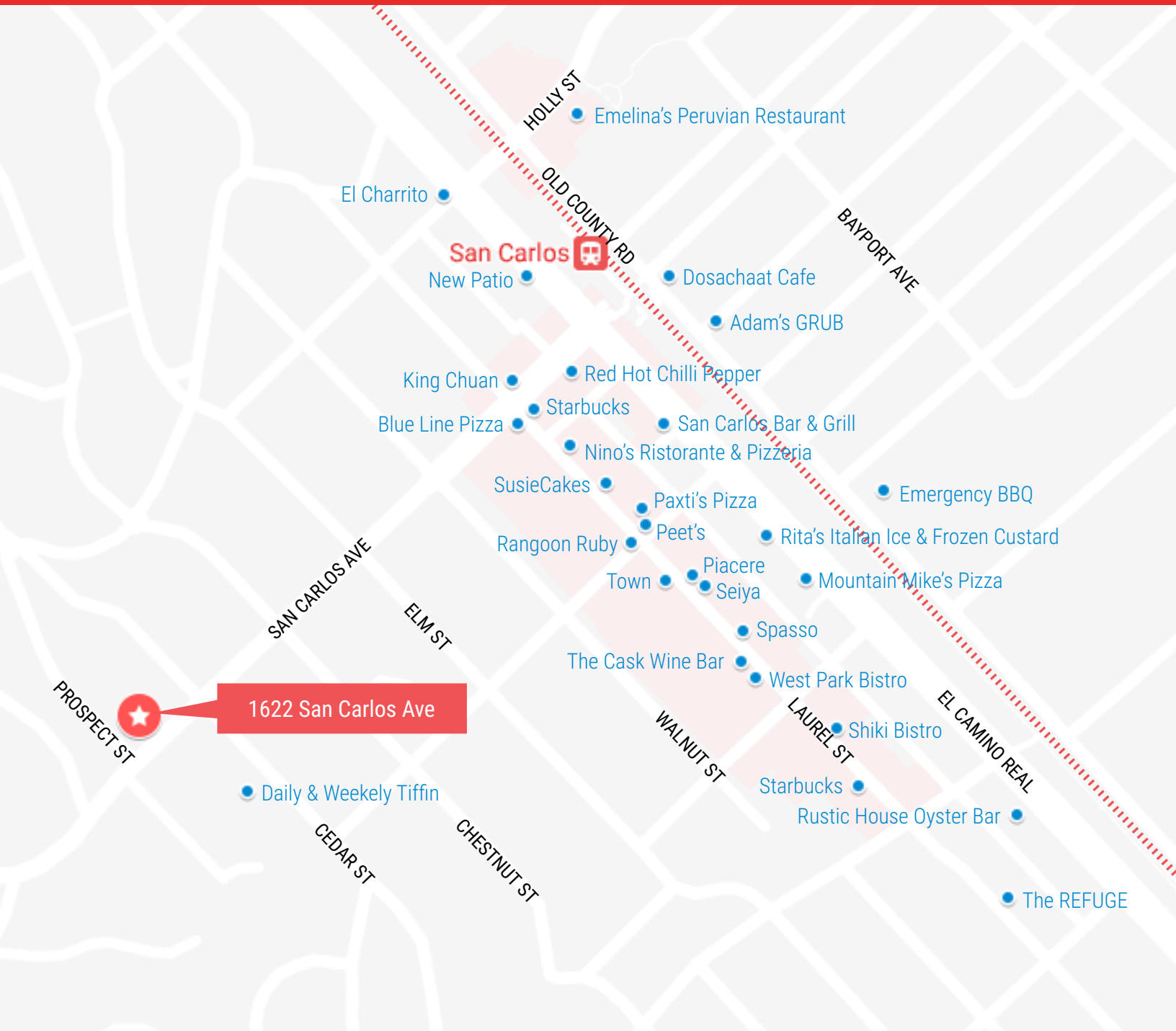
The distributor of this communication is performing acts for which a real estate license is required. The information contained herein has been obtained from sources deemed reliable but has not been verified and no guarantee, warranty or representation, either express or implied, is made with respect to such information. Terms of sale or lease and availability are subject to change or withdrawal without notice.

18-1192 • 03/19

# Creative Office Space in Downtown San Carlos

1622 San Carlos Avenue, Suite C

San Carlos, CA



**Deborah O'Reilly** 650.358.5256 [doreilly@ngkf.com](mailto:doreilly@ngkf.com) CA RE License #01895522  
**Craig Kalinowski** 650.358.5287 [ckalinowski@ngkf.com](mailto:ckalinowski@ngkf.com) CA RE License #01260870

2950 South Delaware Street, Suite 125, San Mateo, CA 94403

[www.ngkf.com](http://www.ngkf.com)

The distributor of this communication is performing acts for which a real estate license is required. The information contained herein has been obtained from sources deemed reliable but has not been verified and no guarantee, warranty or representation, either express or implied, is made with respect to such information. Terms of sale or lease and availability are subject to change or withdrawal without notice.

18-1192 • 03/19