

Westport Business Park

6925 Portwest Drive, Suite 140
Houston, TX 77024

2,285 SF Office Available

FOR LEASE



PROPERTY HIGHLIGHTS

- Located in Westport Business Park, Just Inside the 610 Loop, South of Old Katy Road
- Direct Access to I-10 and 610 Loop in Both Directions
- 6925 Portwest Drive Building is Located on 2.23 Acres
- Four Private Offices, Large Conference Room, Break Room, and Open Work Area
- Furniture Available for Purchase
- On-Site Ownership and Management by J.A. Billipp Company

LEASE TERMS

- \$15.00 Per Square Foot/Year/Net
- 2,285 SF NRA – Immediate Availability*
- 3 to 5 Year Lease Terms Available

MICHAEL FOREMAN
+1 713 963 2850
michael.foreman@cushwake.com

IRYNA FALYK
+1 713 260 0226
iryna.falyk@cushwake.com



**CUSHMAN &
WAKEFIELD**
cushmanwakefield.com

Westport Business Park

6925 Portwest Drive, Suite 140
Houston, TX 77024

2,285 SF Office Available

FOR LEASE

INGRESS/EGRESS



MICHAEL FOREMAN
+1 713 963 2850
michael.foreman@cushwake.com

IRYNA FALYK
+1 713 260 0226
iryna.falyk@cushwake.com



**CUSHMAN &
WAKEFIELD**
cushmanwakefield.com

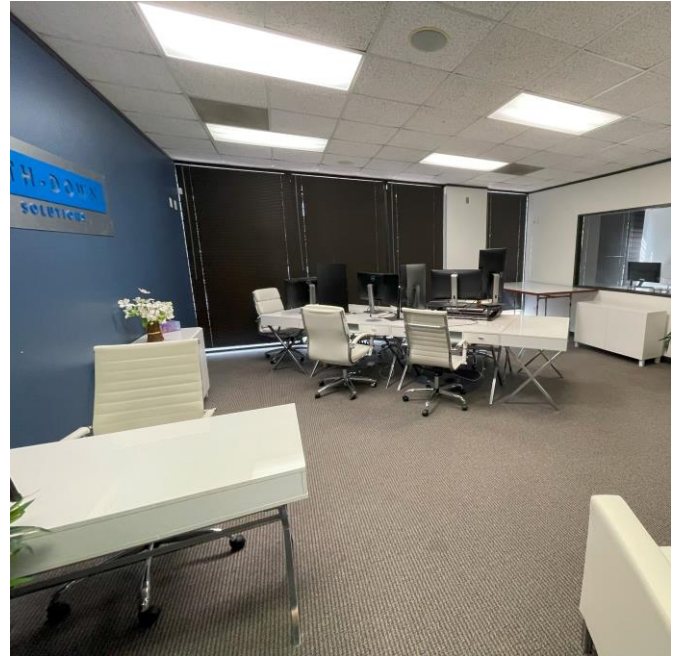
Westport Business Park

6925 Portwest Drive, Suite 140
Houston, TX 77024

2,285 SF Office Available

FOR LEASE

INTERIOR PHOTOS



MICHAEL FOREMAN
+1 713 963 2850
michael.foreman@cushwake.com

IRYNA FALYK
+1 713 260 0226
iryna.falyk@cushwake.com



CUSHMAN &
WAKEFIELD
cushmanwakefield.com

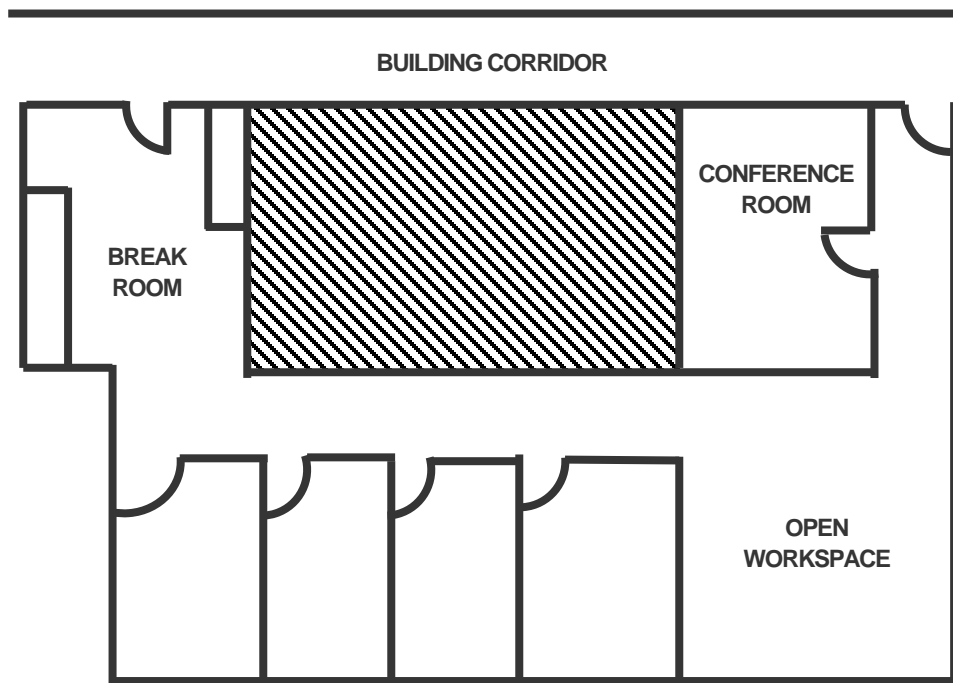
Westport Business Park

6925 Portwest Drive, Suite 140
Houston, TX 77024

2,285 SF Office Available

FOR LEASE

FLOOR PLAN



MICHAEL FOREMAN
+1 713 963 2850
michael.foreman@cushwake.com

IRYNA FALYK
+1 713 260 0226
iryna.falyk@cushwake.com



**CUSHMAN &
WAKEFIELD**
cushmanwakefield.com