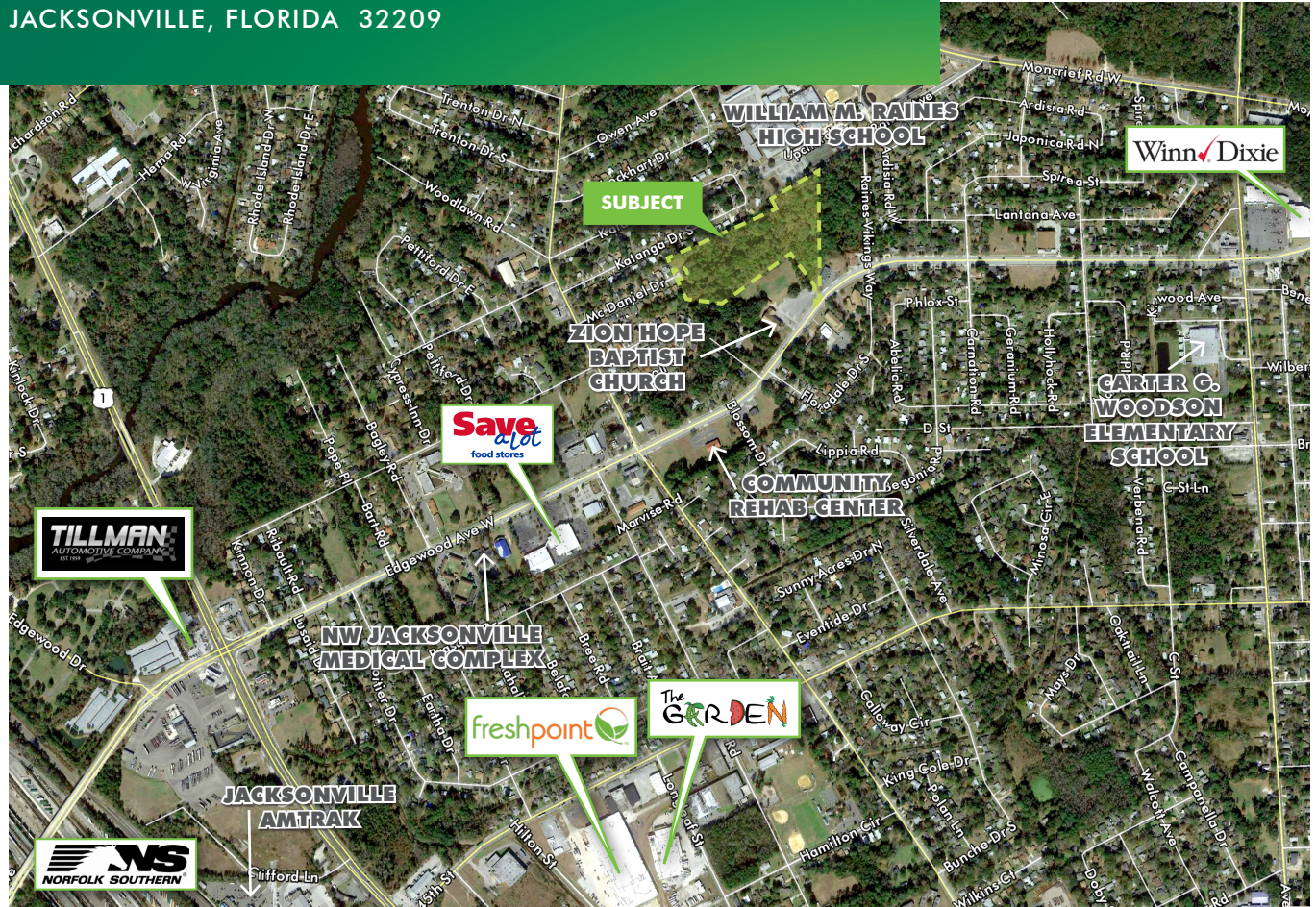


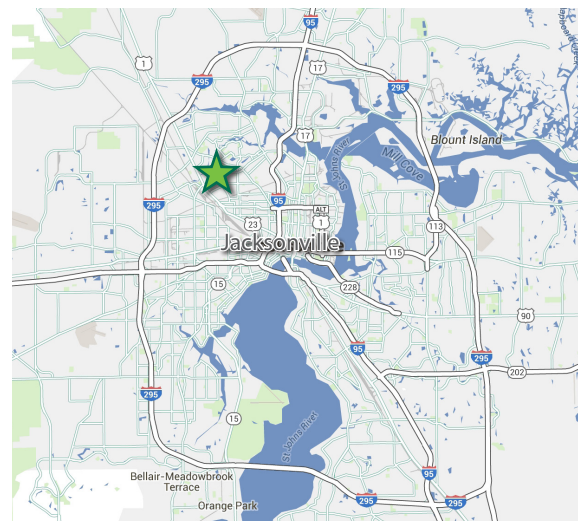
LAND FOR SALE

± 10.4 ACRES
EDGEWOOD AVENUE
JACKSONVILLE, FLORIDA 32209



PROPERTY FEATURES

Total Size:	± 10.4 Acres
Parcel #:	041484-0000, 041485-0000, 027898-0000, 027908-0010, 027908-0050, 030489-0000
Zoning:	RLD-60
Asking Price:	PRICE REDUCED \$525,000 \$495,000

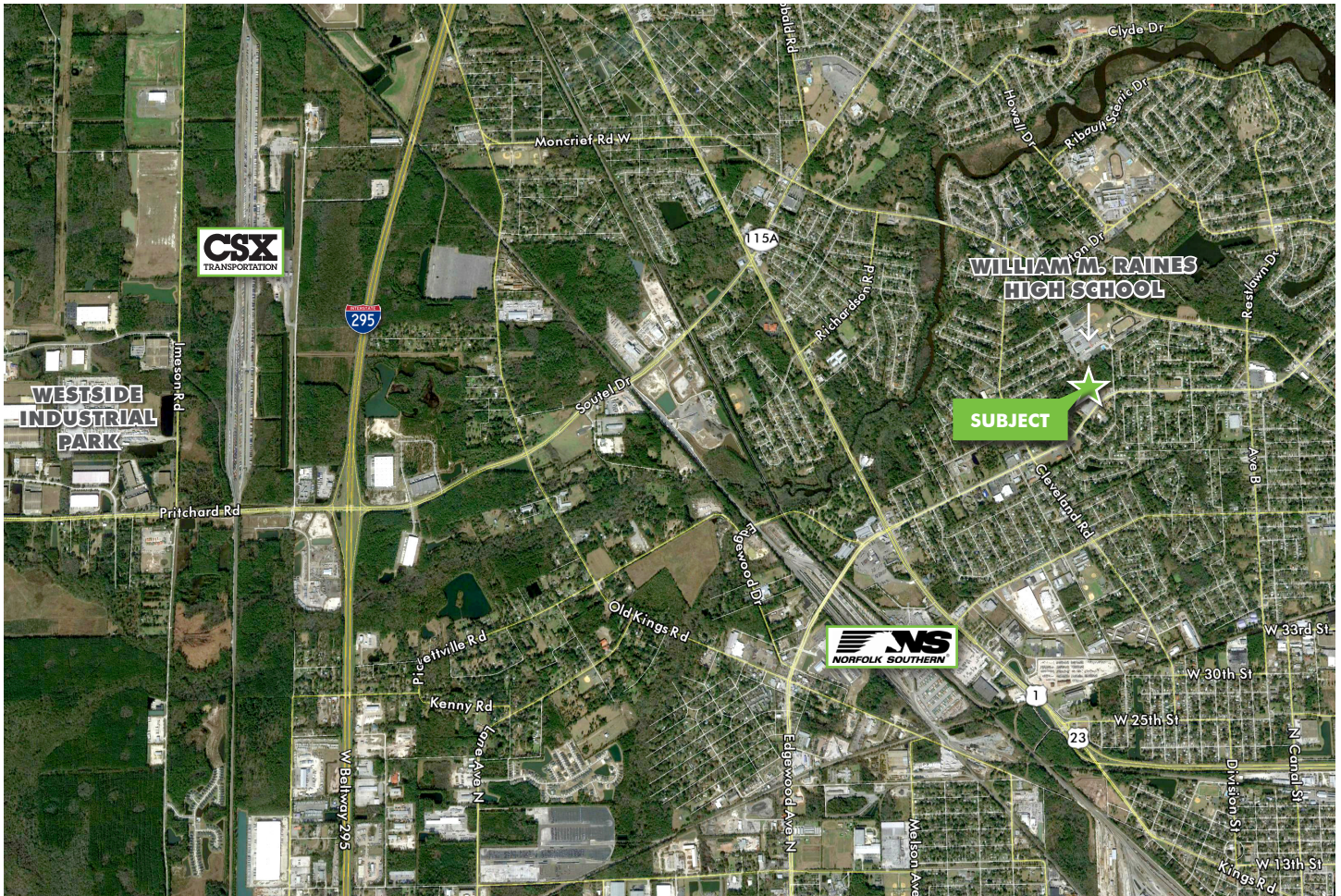


www.cbre.com/jacksonville

CBRE

LAND FOR SALE
±10.4 ACRES

EDGEWOOD AVENUE
JACKSONVILLE, FL 32209



CONTACT US

JESS SIMMONS

Vice President

+1 904 633 2610

jess.simmons@cbre.com

CBRE, Inc. | Licensed Real Estate Broker

© 2019 CBRE, Inc. The information contained in this document has been obtained from sources believed reliable. While CBRE, Inc. does not doubt its accuracy, CBRE, Inc. has not verified it and makes no guarantee, warranty or representation about it. It is your responsibility to independently confirm its accuracy and completeness. Any projections, opinions, assumptions or estimates used are for example only and do not represent the current or future performance of the property. The value of this transaction to you depends on tax and other factors which should be evaluated by your tax, financial and legal advisors. You and your advisors should conduct a careful, independent investigation of the property to determine to your satisfaction the suitability of the property for your needs.

Photos herein are the property of their respective owners and use of these images without the express written consent of the owner is prohibited. CBRE and the CBRE logo are service marks of CBRE, Inc. and/or its affiliated or related companies in the United States and other countries. All other marks displayed on this document are the property of their respective owners.

www.cbre.com/jacksonville

CBRE