

Office Land For Sale

0.15 Acres MOL

Sales Price: \$34,500  
(\$5.31/SF)



## 720 N.E. 28th Street

Oklahoma City, Oklahoma 73105

### PROPERTY HIGHLIGHTS

- 0.15 Acres MOL
- Medical Office Zoning Overlay
- Ready to Develop

### LOCATION HIGHLIGHTS

- Close Proximity to the State Capitol Complex



[www.naisullivangroup.com](http://www.naisullivangroup.com)

**Bob Sullivan, CCIM**

Cell: 1 405 641 9798

[rsullivan@ccim.net](mailto:rsullivan@ccim.net)

4045 N.W. 64th Street, Suite 340

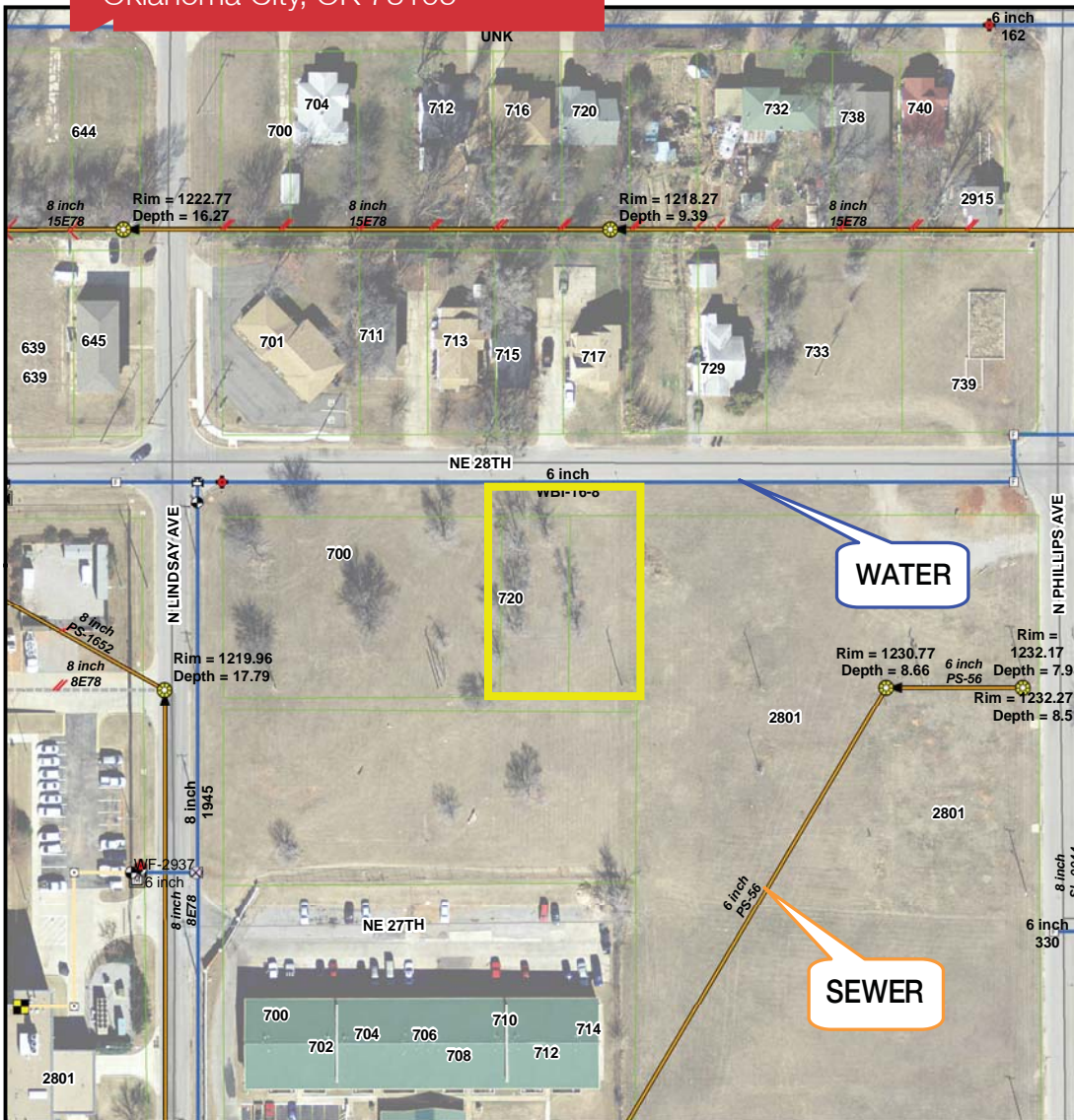
Oklahoma City, Oklahoma 73116

Office: 1 405 840 0600

Fax: 1 405 840 0610

NO WARRANTY OR REPRESENTATION, EXPRESS OR IMPLIED, IS MADE AS TO THE ACCURACY OF THE INFORMATION CONTAINED HEREIN, AND THE SAME IS SUBMITTED SUBJECT TO ERRORS, OMISSIONS, CHANGE OF PRICE, RENTAL OR OTHER CONDITIONS, PRIOR SALE, LEASE OR FINANCING, OR WITHDRAWAL WITHOUT NOTICE, AND OF ANY SPECIAL LISTING CONDITIONS IMPOSED BY OUR PRINCIPALS NO WARRANTIES OR REPRESENTATIONS ARE MADE AS TO THE CONDITION OF THE PROPERTY OR ANY HAZARDS CONTAINED THEREIN ARE ANY TO BE IMPLIED.

720 N.E. 28th Street  
Oklahoma City, OK 73105



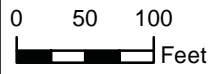
**720 NE 28th**

Sanitary Sewer main extension required to serve 720 NE 28th

**Legend**

- G Water Hydrant
- ( ) Gate
- ? Tapping
- C Detector Check
- C Meter
- Active, Oklahoma City
- 2 SStandardManhole
- Sewer Lateral Line
- Abandoned, Oklahoma City
- Active, Oklahoma City
- County Parcels 2018

Neither the City nor any of its trusts nor any of their employees, officers, or agents warrant or represent that the information or data on this document is accurate or appropriate for use or re-use for any purpose. The user of this document assumes the sole duty and full responsibility for the verification of the information and data contained therein. Any use of or reliance upon this document or the information or data contained therein is solely, totally, and exclusively at the users own risk.



**DEMOGRAPHICS**

<b>Population</b>		
1 Mile: 8,262	3 Mile: 72,469	5 Mile: 167,789
<b>Average Household Income</b>		
1 Mile: \$27,803	3 Mile: \$40,115	5 Mile: \$41,446
<b>Total Households</b>		
1 Mile: 3,878	3 Mile: 32,432	5 Mile: 70,285

**Bob Sullivan, CCIM**

Cell: 1 405 641 9798  
rsullivan@ccim.net

[www.naisullivangroup.com](http://www.naisullivangroup.com)



4045 N.W. 64th Street, Suite 340  
Oklahoma City, Oklahoma 73116  
Office: 1 405 840 0600  
Fax: 1 405 840 0610