

# 5005 & 5037 Main Street Zachary, LA 70791

Land For Sale

OR

Build-to-Suit For Lease

### Property Features

- 0.86 Acres on Main Street
- Lots 34 & 35
- \$17.50 PSF for Sale
- Owner Will Also Build-to-Suit
- Price Commercial Location off Main Street & Hwy 19
- Commercial Zoning

PLEASE DO NOT DISTURB TENANT  
-----CONFIDENTIAL-----



## **NA**Latter & Blum

**Hartley Crockett**  
225.610.0821  
hcdaigle@latterblum.com

**Michael Cashio**  
225.247.9812  
mcashio@latterblum.com

LICENSED IN LOUISIANA. NO WARRANTY OR REPRESENTATION, EXPRESS OR IMPLIED, IS MADE AS TO THE ACCURACY OF THE INFORMATION CONTAINED HEREIN, AND THE SAME IS SUBMITTED SUBJECT TO ERRORS, OMISSIONS, CHANGE OF PRICE, RENTAL OR OTHER CONDITIONS, PRIOR SALE, LEASE OR FINANCING, OR WITHDRAWAL WITHOUT NOTICE, AND OF ANY SPECIAL LISTING CONDITIONS IMPOSED BY OUR PRINCIPALS NO WARRANTIES OR REPRESENTATIONS ARE MADE AS TO THE CONDITION OF THE PROPERTY OR ANY HAZARDS CONTAINED THEREIN ARE ANY TO BE IMPLIED.

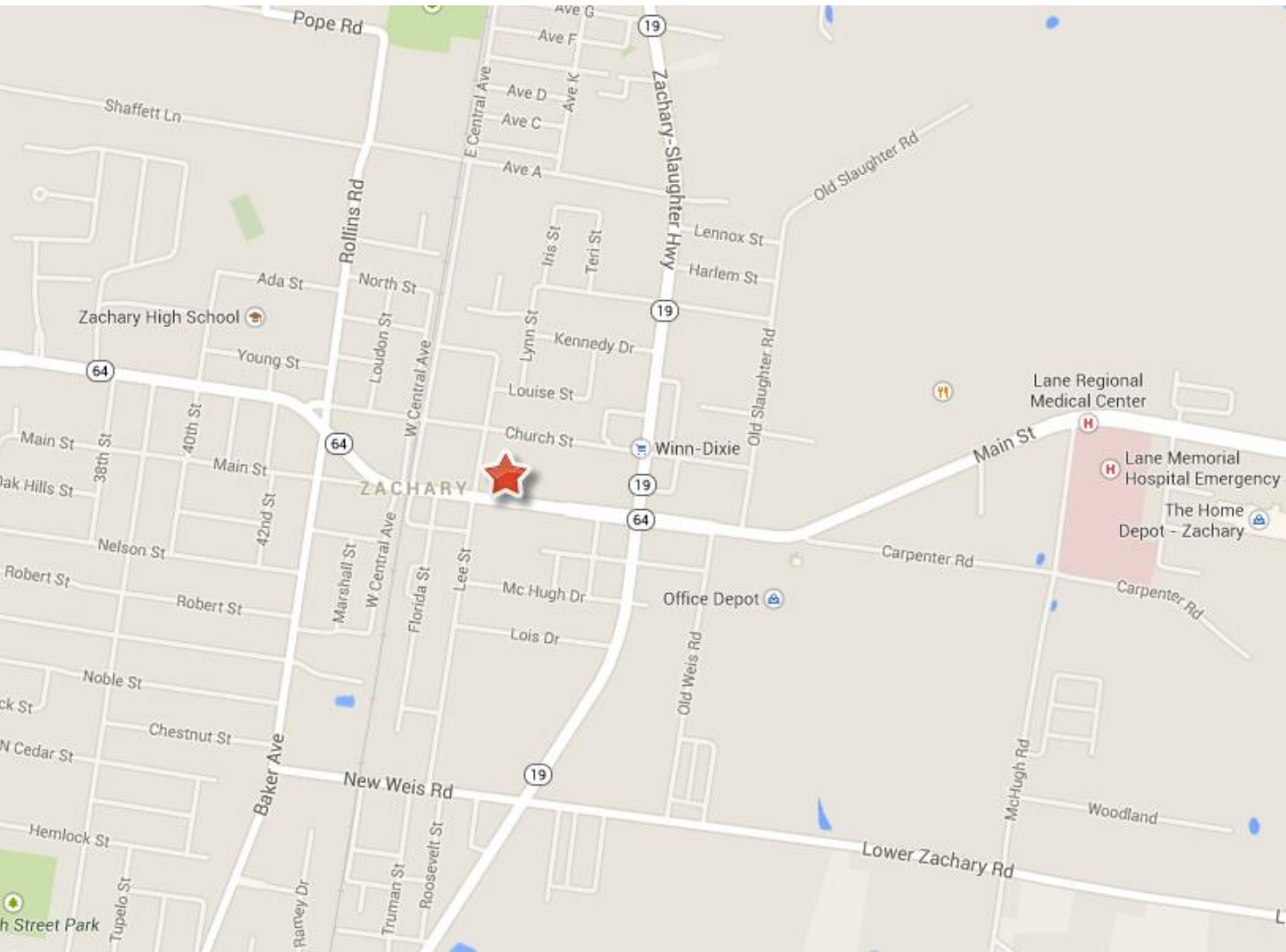
1700 City Farm Drive  
Baton Rouge, LA 70806 USA  
225.295.0800  
[www.latterblum.com](http://www.latterblum.com)

# 5005 & 5037 Main Street Zachary, LA 70791

Land For Sale

OR

Build-to-Suit For Lease



**NAI** **Latter & Blum**

**Hartley Crockett**  
225.610.0821  
hcdaigle@latterblum.com

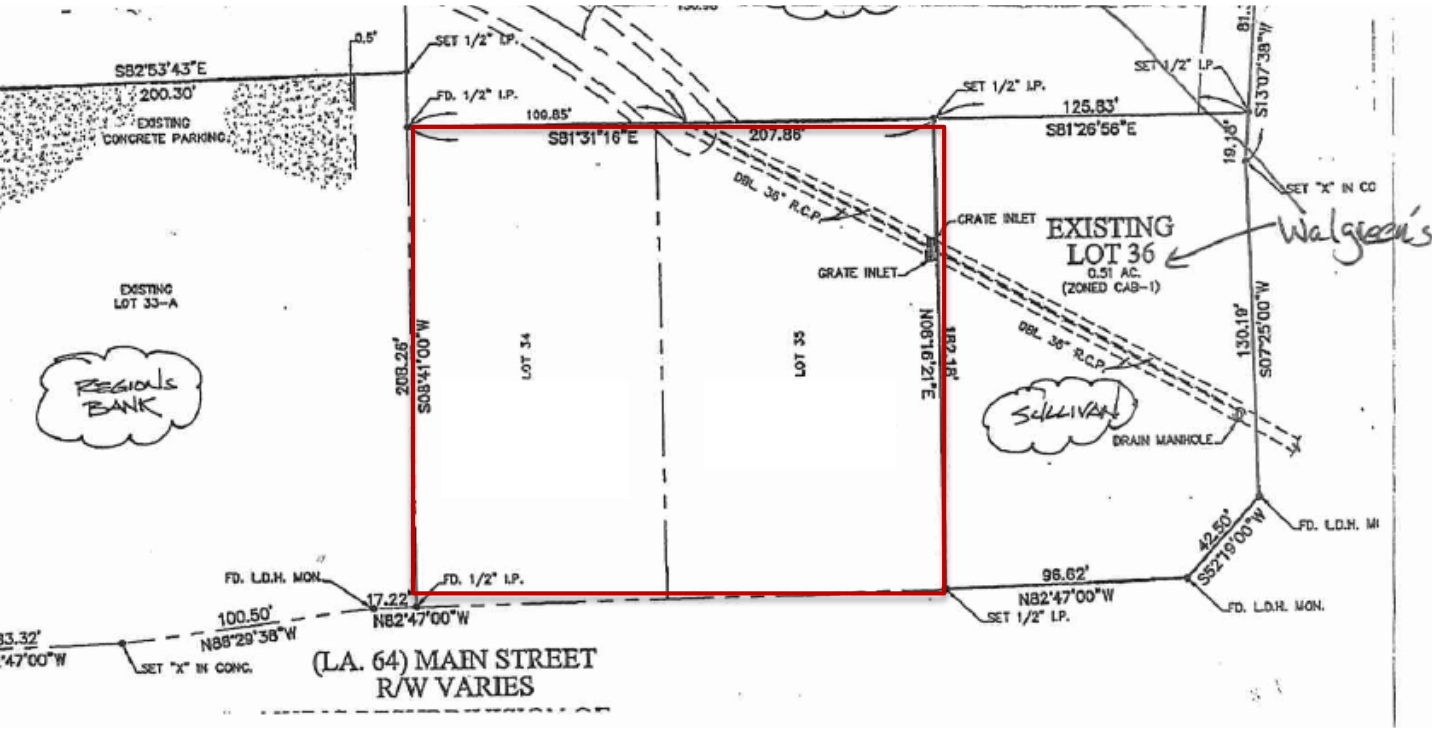
**Michael Cashio**  
225.247.9812  
mcashio@latterblum.com

LICENSED IN LOUISIANA. NO WARRANTY OR REPRESENTATION, EXPRESS OR IMPLIED, IS MADE AS TO THE ACCURACY OF THE INFORMATION CONTAINED HEREIN, AND THE SAME IS SUBMITTED SUBJECT TO ERRORS, OMISSIONS, CHANGE OF PRICE, RENTAL OR OTHER CONDITIONS, PRIOR SALE, LEASE OR FINANCING, OR WITHDRAWAL WITHOUT NOTICE, AND OF ANY SPECIAL LISTING CONDITIONS IMPOSED BY OUR PRINCIPALS NO WARRANTIES OR REPRESENTATIONS ARE MADE AS TO THE CONDITION OF THE PROPERTY OR ANY HAZARDS CONTAINED THEREIN ARE ANY TO BE IMPLIED.

1700 City Farm Drive  
Baton Rouge, LA 70806 USA  
225.295.0800  
[www.latterblum.com](http://www.latterblum.com)

# 5005 & 5037 Main Street Zachary, LA 70791

Land For Sale  
OR  
Build-to-Suit For Lease



**NAL**atter & Blum

**Hartley Crockett**  
225.610.0821  
hcdaigle@latterblum.com

**Michael Cashio**  
225.247.9812  
mcashio@latterblum.com

LICENSED IN LOUISIANA. NO WARRANTY OR REPRESENTATION, EXPRESS OR IMPLIED, IS MADE AS TO THE ACCURACY OF THE INFORMATION CONTAINED HEREIN, AND THE SAME IS SUBMITTED SUBJECT TO ERRORS, OMISSIONS, CHANGE OF PRICE, RENTAL OR OTHER CONDITIONS, PRIOR SALE, LEASE OR FINANCING, OR WITHDRAWAL WITHOUT NOTICE, AND OF ANY SPECIAL LISTING CONDITIONS IMPOSED BY OUR PRINCIPALS NO WARRANTIES OR REPRESENTATIONS ARE MADE AS TO THE CONDITION OF THE PROPERTY OR ANY HAZARDS CONTAINED THEREIN ARE ANY TO BE IMPLIED.

1700 City Farm Drive  
Baton Rouge, LA 70806 USA  
225.295.0800  
[www.latterblum.com](http://www.latterblum.com)