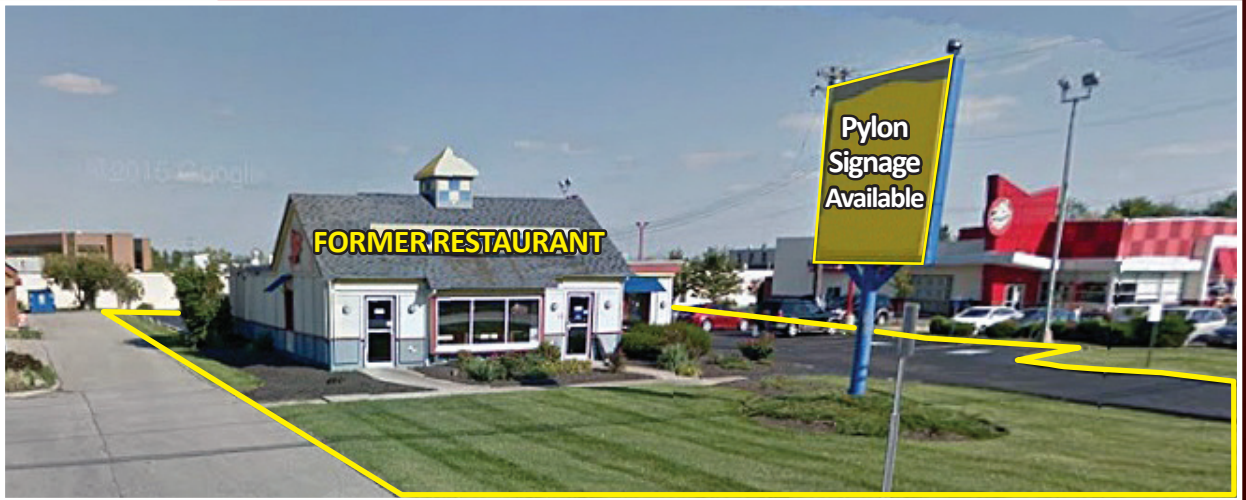


AVAILABLE

FREESTANDING FORMER RESTAURANT



9100 Plainfield Road | Blue Ash, OH 45236

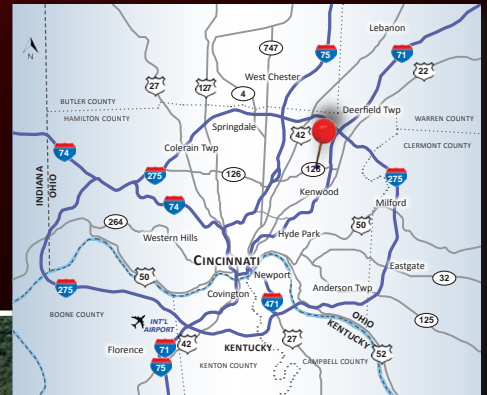
PROPERTY HIGHLIGHTS

RARE OPPORTUNITY

- 2,096 Square Foot Freestanding Restaurant on .613 Acres
- Highly Visible Pylon Signage
- Across from Target, facing Highway Exit Ramp
- Directly off Ronald Reagan-Cross County Highway with Convenient Access to I-71 and I-75
- Proposed Roundabout Planned for 2021 at Intersection of Plainfield Road and Cross County Highway Exit Ramp
- Prime Position in Cincinnati's Top Suburban Office Market
- Plainfield Rd: 20,000 ADT

DEMOGRAPHICS

<u>Year 2016</u>	<u>One Mile</u>	<u>Three Mile</u>	<u>Five Mile</u>
Estimated Population	10,269	66,620	157,958
Median HH Income	\$63,788	\$74,039	\$68,522
Average HH Income	\$83,095	\$93,261	\$87,810
Daytime Population	10,008	76,309	175,627



Joshua M. Rothstein

513.268.4453

josh@onsiteretailgroup.com



Joshua M. Rothstein
 513.268.4453
 josh@onsiteretailgroup.com

9100 Plainfield Rd
 Blue Ash, OH 45236



This map was produced using data from private and government sources deemed to be reliable. The information herein is provided without representation or warranty.

Logos are for identification purposes only and may be trademarks of their respective companies.



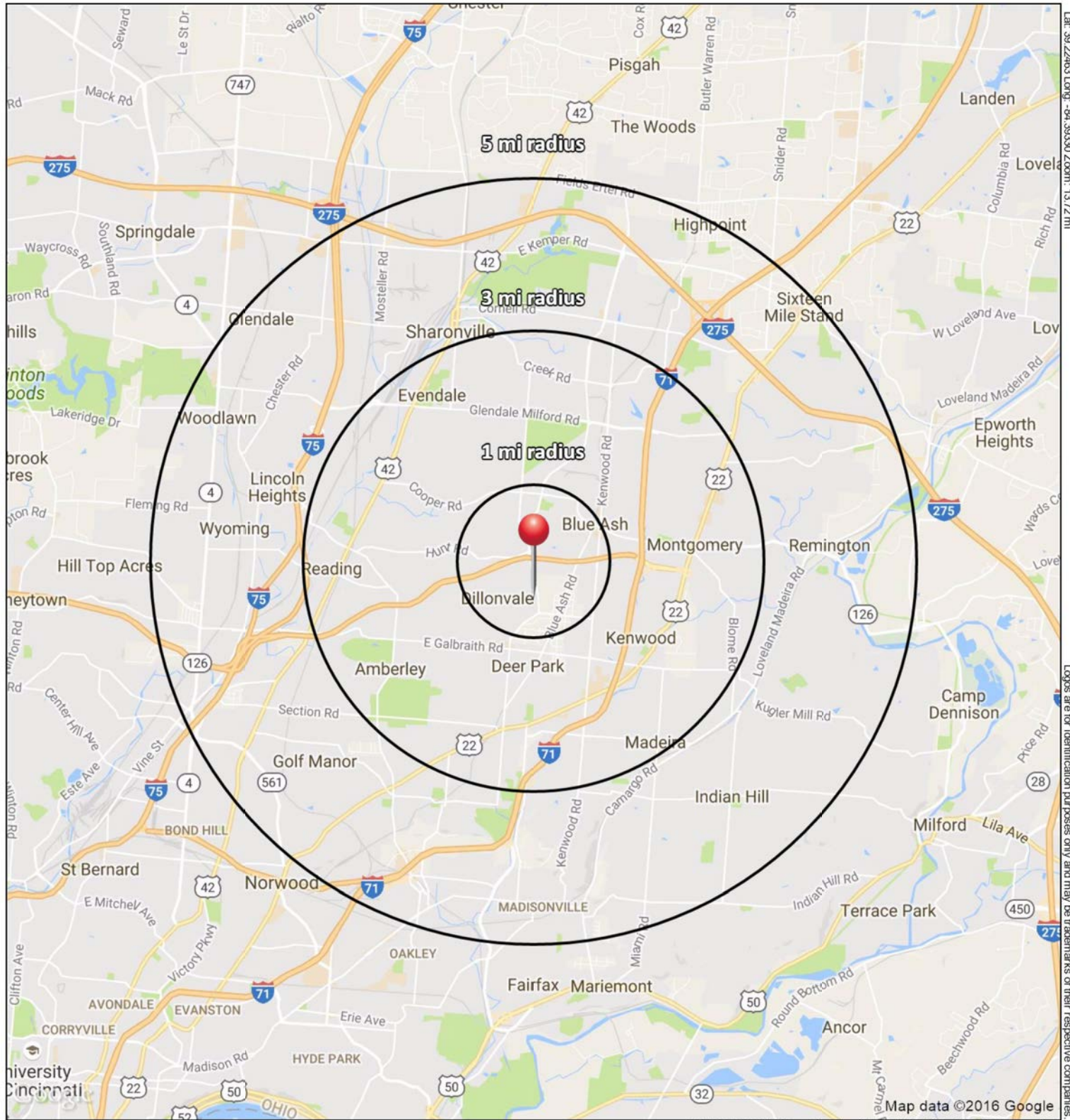
Joshua M. Rothstein
 513.268.4453
 josh@onsiteretailgroup.com

9100 Plainfield Rd
 Blue Ash, OH 45236



Logos are for identification purposes only and may be trademarks of their respective companies.

This map was produced using data from private and government sources deemed to be reliable. The information herein is provided without representation or warranty.



9100 Plainfield Rd
Cincinnati, OH 45236-1204

October 2016



SUMMARY PROFILE

2000-2010 Census, 2016 Estimates with 2021 Projections

Calculated using Weighted Block Centroid from Block Groups



Lat/Lon: 39.2247/-84.3933

RS1

9100 Plainfield Rd		1 mi radius	3 mi radius	5 mi radius
Cincinnati, OH 45236-1204				
POPULATION	2016 Estimated Population	10,269	66,620	157,958
	2021 Projected Population	10,204	66,652	160,447
	2010 Census Population	10,680	68,372	159,723
	2000 Census Population	11,063	71,473	171,219
	Projected Annual Growth 2016 to 2021	-0.1%	-	0.3%
	Historical Annual Growth 2000 to 2016	-0.4%	-0.4%	-0.5%
	2016 Median Age	40.1	42.3	41
HOUSEHOLDS	2016 Estimated Households	4,521	29,253	69,783
	2021 Projected Households	4,520	29,421	71,370
	2010 Census Households	4,616	29,441	69,049
	2000 Census Households	4,646	29,984	72,432
	Projected Annual Growth 2016 to 2021	-	0.1%	0.5%
	Historical Annual Growth 2000 to 2016	-0.2%	-0.2%	-0.2%
RACE AND ETHNICITY	2016 Estimated White	85.3%	81.7%	68.4%
	2016 Estimated Black or African American	3.7%	10.7%	24.1%
	2016 Estimated Asian or Pacific Islander	8.5%	4.9%	4.3%
	2016 Estimated American Indian or Native Alaskan	0.2%	0.1%	0.2%
	2016 Estimated Other Races	2.3%	2.5%	3.1%
	2016 Estimated Hispanic	2.4%	2.3%	2.8%
INCOME	2016 Estimated Average Household Income	\$83,095	\$93,261	\$87,810
	2016 Estimated Median Household Income	\$63,788	\$74,039	\$68,522
	2016 Estimated Per Capita Income	\$36,591	\$41,028	\$38,880
EDUCATION (AGE 25+)	2016 Estimated Elementary (Grade Level 0 to 8)	1.8%	2.0%	2.3%
	2016 Estimated Some High School (Grade Level 9 to 11)	4.7%	4.4%	5.7%
	2016 Estimated High School Graduate	26.2%	23.4%	23.6%
	2016 Estimated Some College	17.8%	18.5%	18.4%
	2016 Estimated Associates Degree Only	7.4%	7.0%	7.5%
	2016 Estimated Bachelors Degree Only	23.9%	25.9%	25.1%
	2016 Estimated Graduate Degree	18.2%	18.7%	17.4%
BUSINESS	2016 Estimated Total Businesses	706	5,012	11,275
	2016 Estimated Total Employees	10,008	76,309	175,627
	2016 Estimated Employee Population per Business	14.2	15.2	15.6
	2016 Estimated Residential Population per Business	14.5	13.3	14.0

This report was produced using data from private and government sources deemed to be reliable. The information herein is provided without representation or warranty.