

GALAXIE Suites

5120 GALAXIE Dr.
JACKSON MS

 MENU



Interactive
 Options

OFFICE LEASE

3,000 SF
to
10,000 SF

Josh Varon
Grace Properties
1213 Ellis Ave
JACKSON, MS
(601) 336-0770



SHARE



Elegant Office Suites

Previous MS Journal headquarters

5120 **GALAXIE** DR.
JACKSON, MS

Interactive
➔ Options

Click to **PAGE**



- 1 HOME PAGE
- 2 MENU
- 3 SUMMARY
- 4 INFORMATION
- 5 FLOOR PLANS (overview)
- 6 Suite A
- 7 Suite B
- 8 Suite C
- 9 Suite A+B
- 10 PHOTO GALLERY
- 11 AERIAL + TRAFFIC
- 12 BUSINESSES AROUND
- 13 CONTACT



**ELEGANT
FINISHED
OFFICE**

Josh Varon
Grace Properties
1213 Ellis Ave
JACKSON, MS
(601) 336-0770



5120 **GALAXIE DR.**
JACKSON, MS



Interactive
➔ Options



The former MS Journal Building in North Jackson is a 3-unit office space built in 1969 and remodeled in 2011.

Solid foundation, roof, plumbing and electricity

10,748 SF, 3 Office Suites, .68 acres on Galaxie Drive just off I-55

| Unit | SF | Occupancy | Usage | \$/SF |
|--------|-------|-----------|---------|--------|
| 5120 A | 2,940 | Available | Office | \$9.50 |
| 5120 B | 4,380 | Available | Office | \$9.50 |
| 5120 C | 2,880 | Occupied | Daycare | \$9.50 |

**ELEGANT
FINISHED
OFFICE**

Josh Varon
Grace Properties
1213 Ellis Ave
JACKSON, MS
(601) 336-0770

 **SHARE**

5120 **GALAXIE DR.**
JACKSON, MS

Interactive
➔ Options

PROPERTY INFO

| | |
|--------------------------------------|---------------------------------|
| 10,700 Square Feet | 3 Suites |
| | 27% Occupied |
| 3 Kitchens and Break Rooms | .68 Acres |
| | 32 PARKING Spaces |
| 1969 YEAR BUILT | 507-470 Parcel Number |

DEMOGRAPHICS

| | | |
|--|---|--|
| 172,000 JACKSON POPULATION | | |
| 109,600 People 5 MILE | 58,600 People 3 MILE | 10,900 People 1 MILE |
| 102,000 Daytime Businesses Population 5 MILE | 38,942 Daytime Businesses Population 3 MILE | 6,900 Daytime Businesses Population 1 MILE |
| 9,000 STUDENTS Jackson State University | \$35,717 Median Household Income (2014) | |
| | \$57,057 Median Household Income (2014) | |

AREA INFO

| | | | |
|---|---|---|---------------------------------------|
| ON I-55 | 96,000 TRAFFIC COUNTS on I-55 | 1,134 Businesses 1 MILE | 40 Restaurants/Bars 1 MILE |
| | | 6,272 Businesses 3 MILE | 227 Restaurants/Bars 3 MILE |
| | | 12,684 Businesses 5 MILE | 439 Restaurants/Bars 5 MILE |
| 15 Minutes to Jackson State University | 7 Minutes to DOWNTOWN | 3 Hours to New Orleans & Memphis | 11 MUSEUMS in Jackson |



**ELEGANT
FINISHED
OFFICE**

Josh Varon
Grace Properties
1213 Ellis Ave
JACKSON, MS
(601) 336-0770

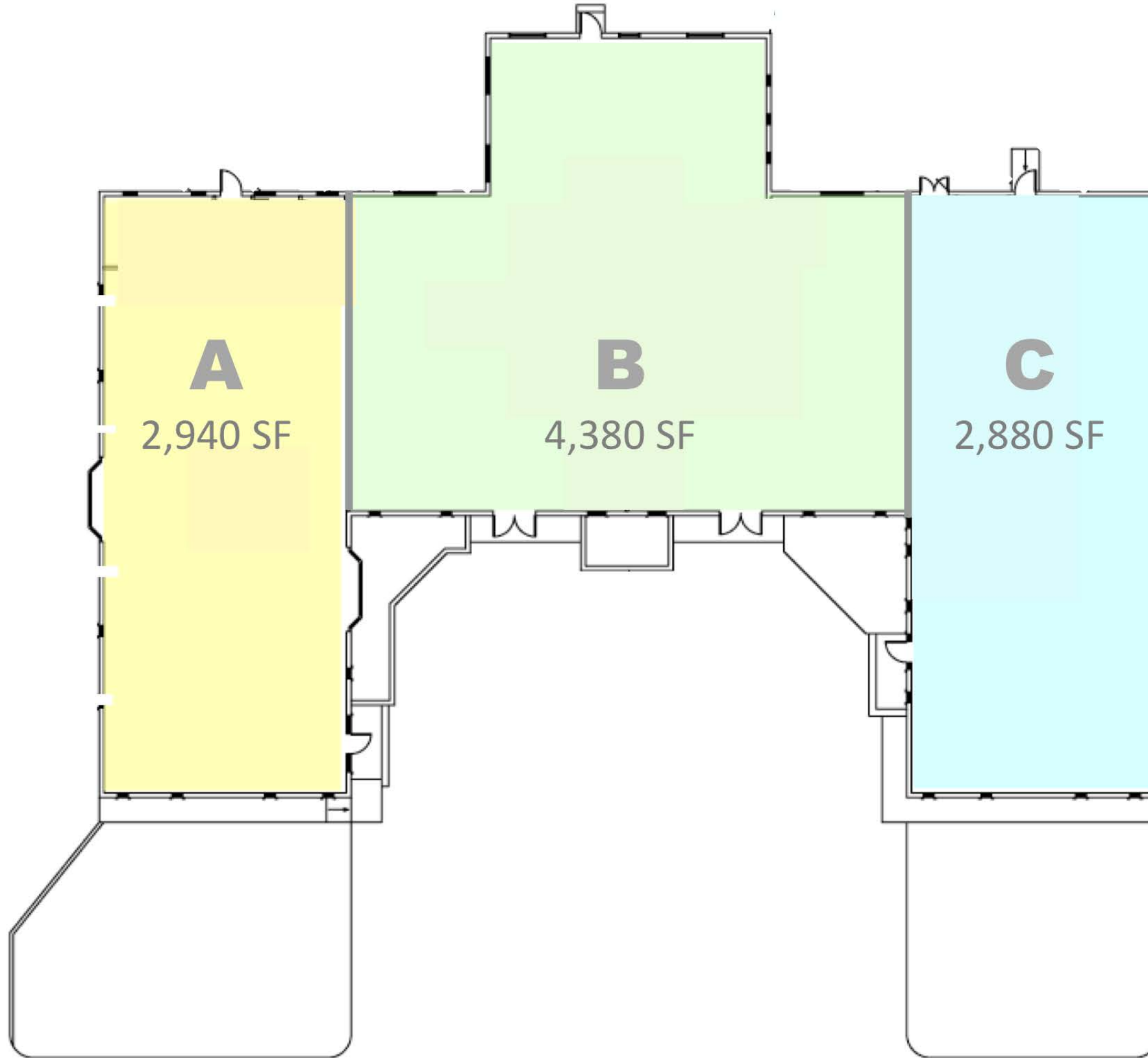


FLOOR PLANS

➔ MENU

5120 **GALAXIE DR.**
JACKSON, MS

Interactive
➔ Options



Josh Varon
Grace Properties
1213 Ellis Ave
JACKSON, MS
(601) 336-0770

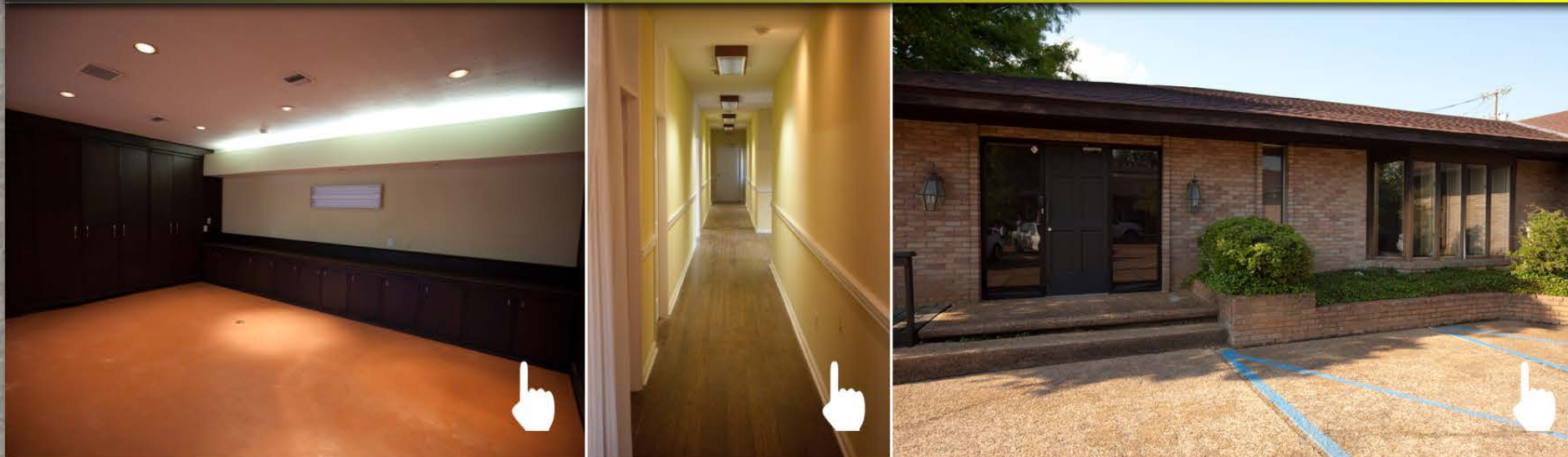
**ELEGANT
FINISHED
OFFICE**

 **SHARE**

SUITE A

➔ MENU

5120 **GALAXIE DR.**
JACKSON, MS



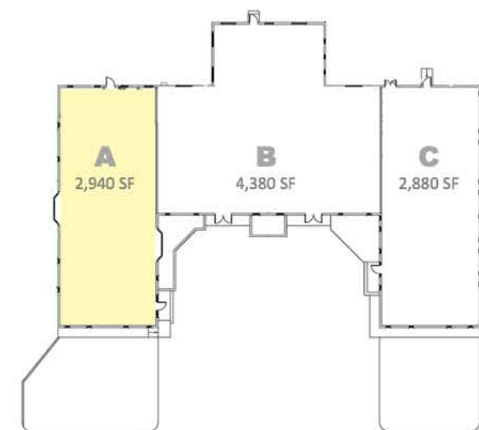
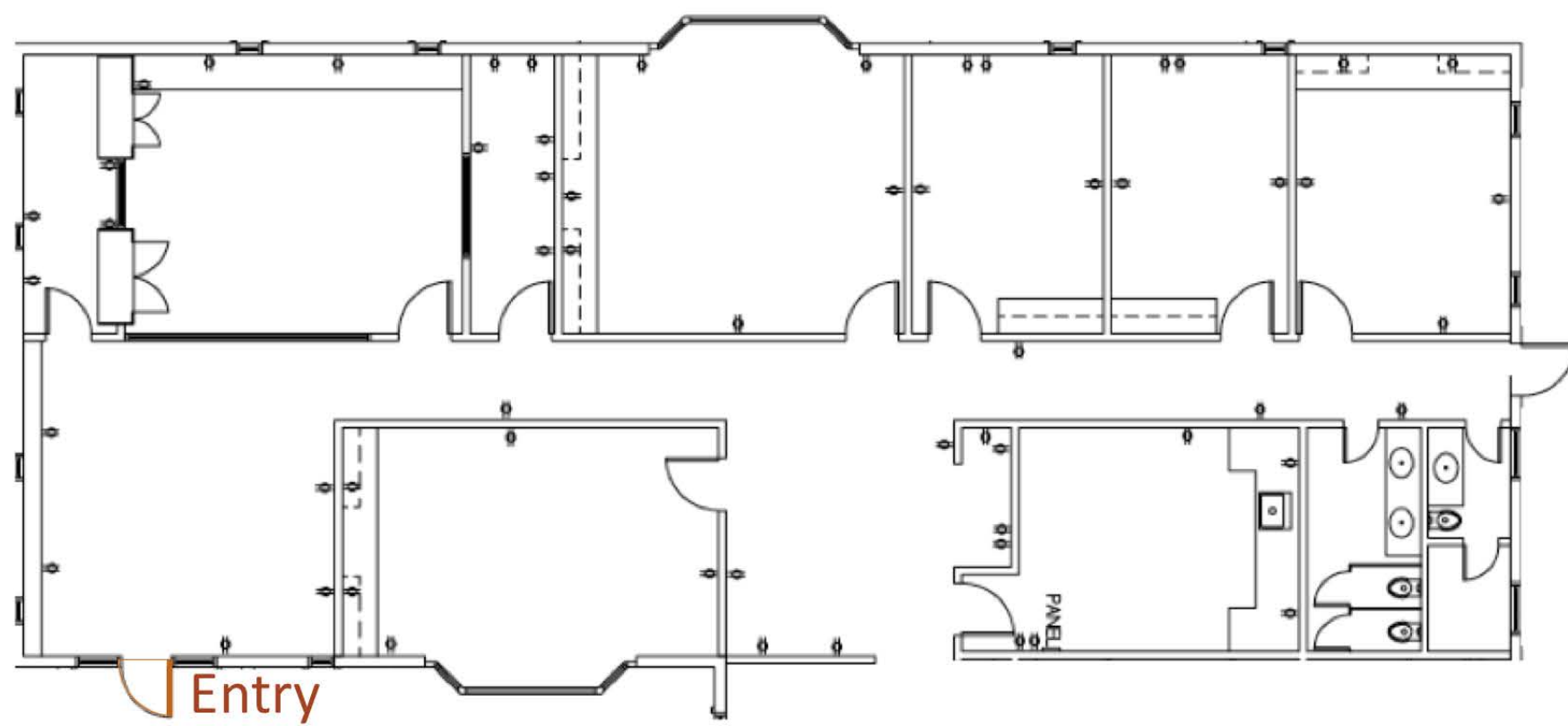
Interactive
➔ Options

USAGE:

UPSCALE
OFFICES

INFO:

2,940 SF
9 Offices
\$2,450 Month



**ELEGANT
FINISHED
OFFICE**



Josh Varon
Grace Properties
1213 Ellis Ave
JACKSON, MS
(601) 336-0770

 **SHARE**

SUITE B

➔ MENU

5120 GALAXIE DR.
JACKSON, MS



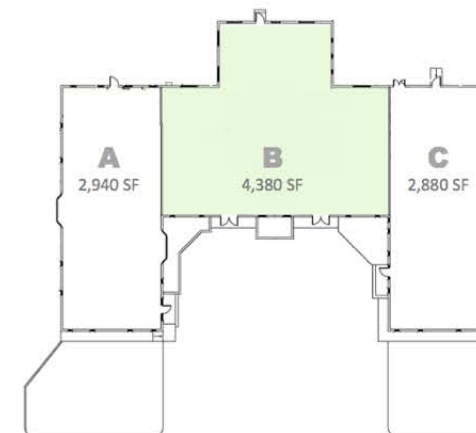
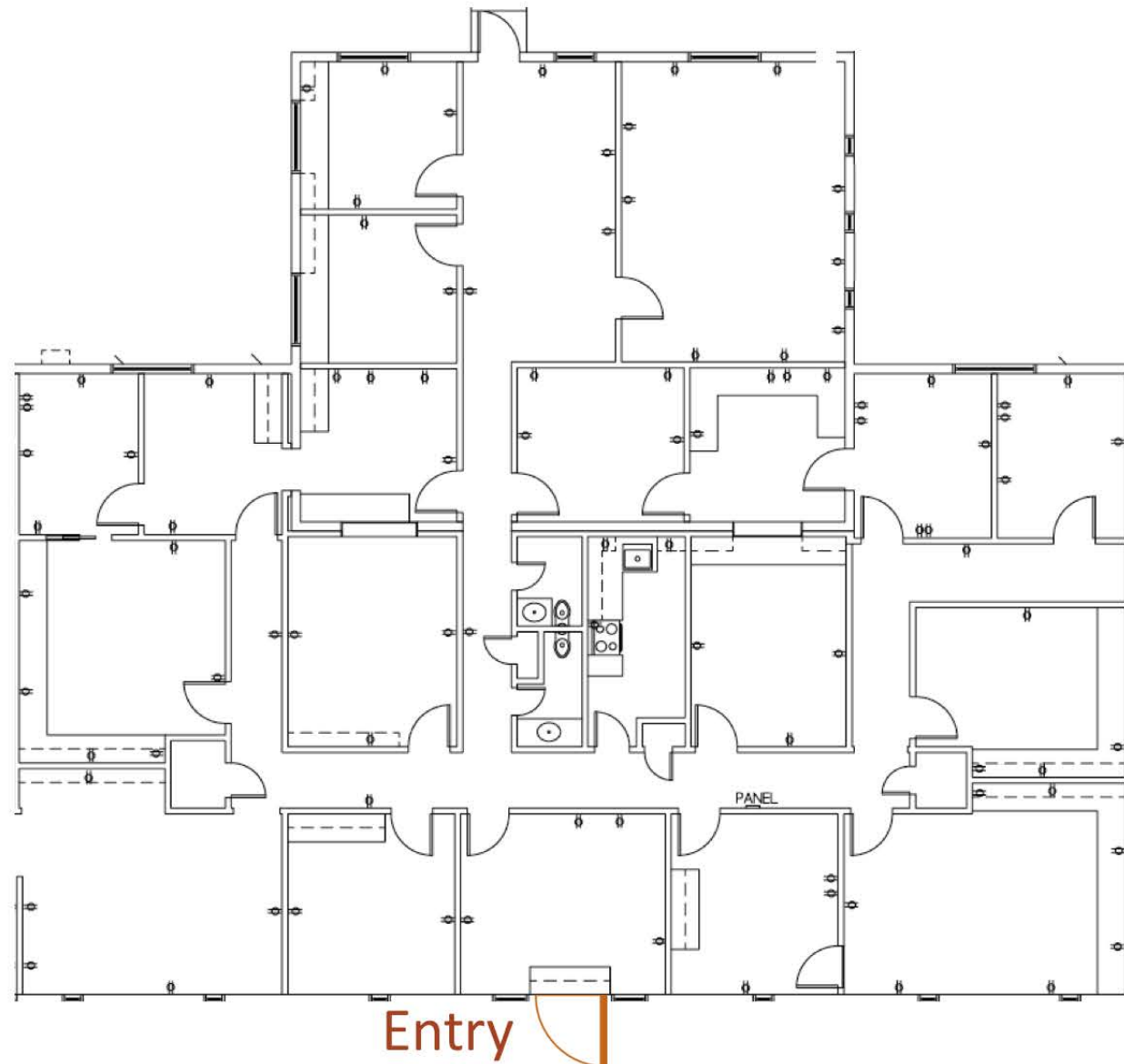
Interactive
➔ Options

USAGE:
OFFICES
DAY CARE

INFO:

4,380 SF
19 Offices
\$2,920 Month

**ELEGANT
FINISHED
OFFICE**



Josh Varon
Grace Properties
1213 Ellis Ave
JACKSON, MS
(601) 336-0770



SHARE

SUITE C

Unavailable

[➔ MENU](#)

5120 **GALAXIE DR.**
JACKSON, MS



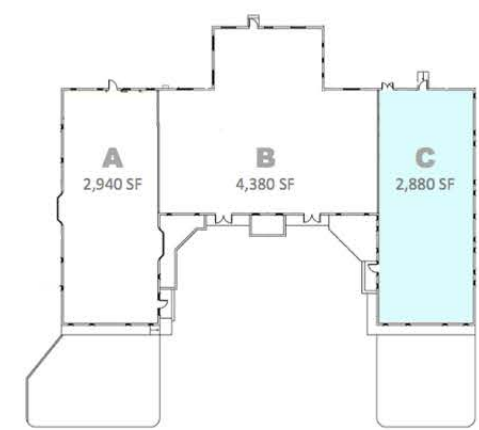
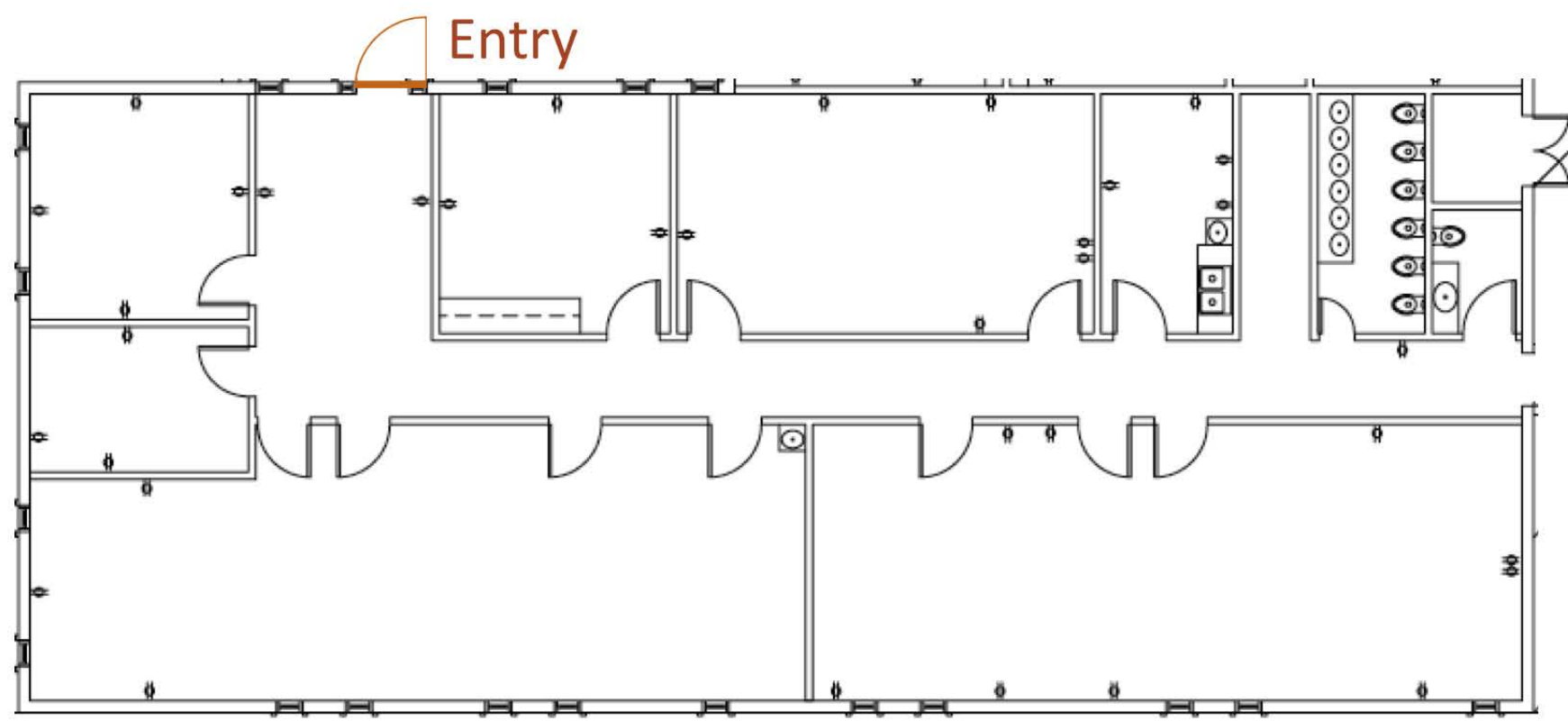
Interactive
➔ Options

USAGE:

- OFFICES
- DAY CARE

INFO:

2,880 SF
10 Offices
\$2,160 Month



**ELEGANT
FINISHED
OFFICE**



Josh Varon
Grace Properties
1213 Ellis Ave
JACKSON, MS
(601) 336-0770

 [SHARE](#)

SUITE A+B

[➔ MENU](#)

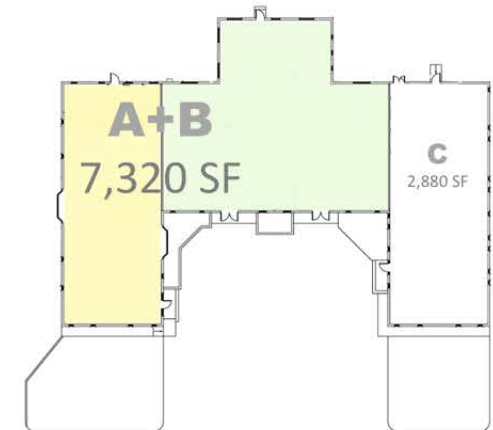
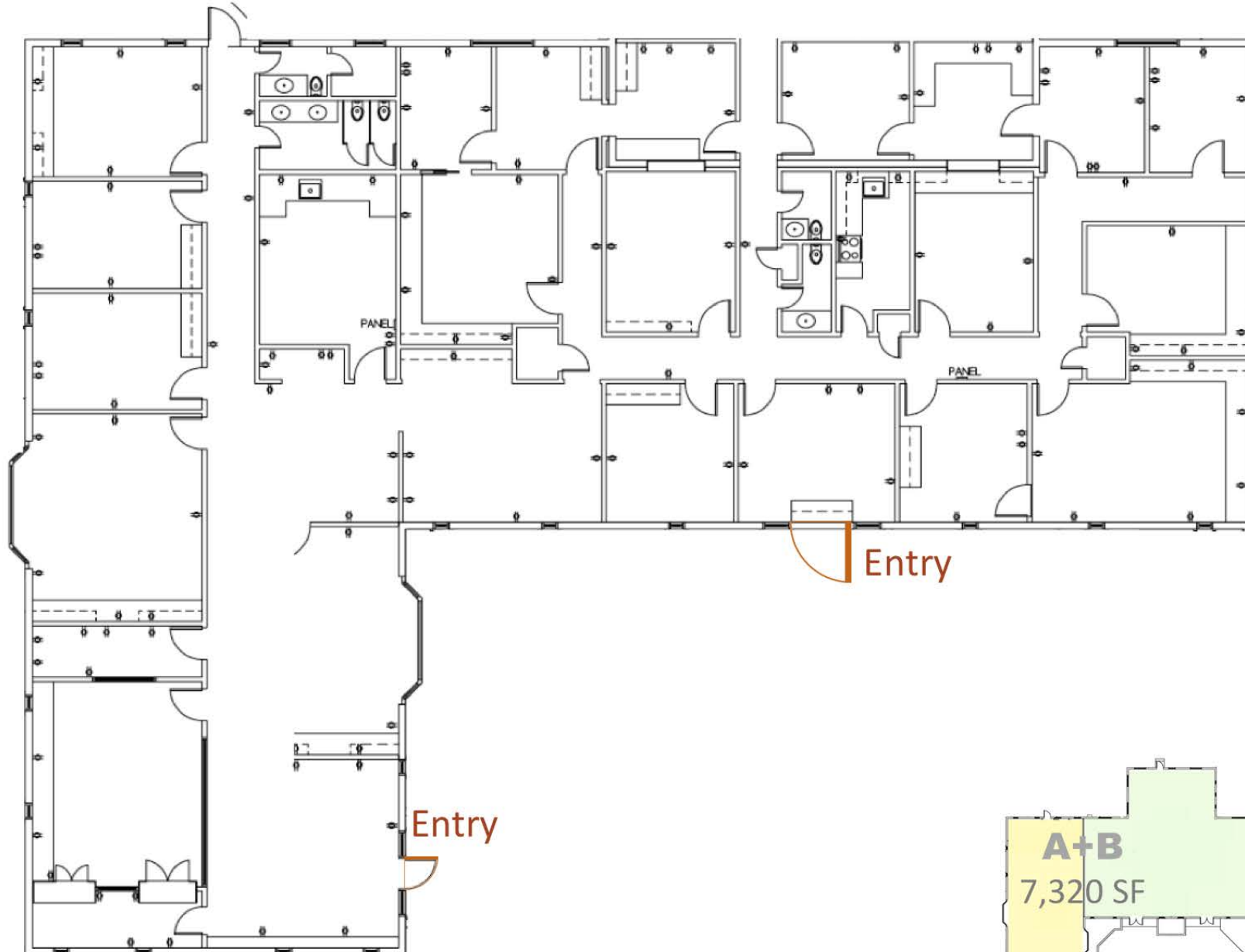
5120 **GALAXIE DR.**
JACKSON, MS



Interactive
➔ Options

USAGE:
OFFICES
DAY CARE

INFO:
7,320 SF
28 Offices
\$4,880 Month



**ELEGANT
FINISHED
OFFICE**

Josh Varon
Grace Properties
1213 Ellis Ave
JACKSON, MS
(601) 336-0770

 [SHARE](#)

PHOTO GALLERY

➔ MENU

5120 **GALAXIE DR.**
JACKSON, MS



Interactive
➔ Options



**ELEGANT
FINISHED
OFFICE**

Josh Varon
Grace Properties
1213 Ellis Ave
JACKSON, MS
(601) 336-0770

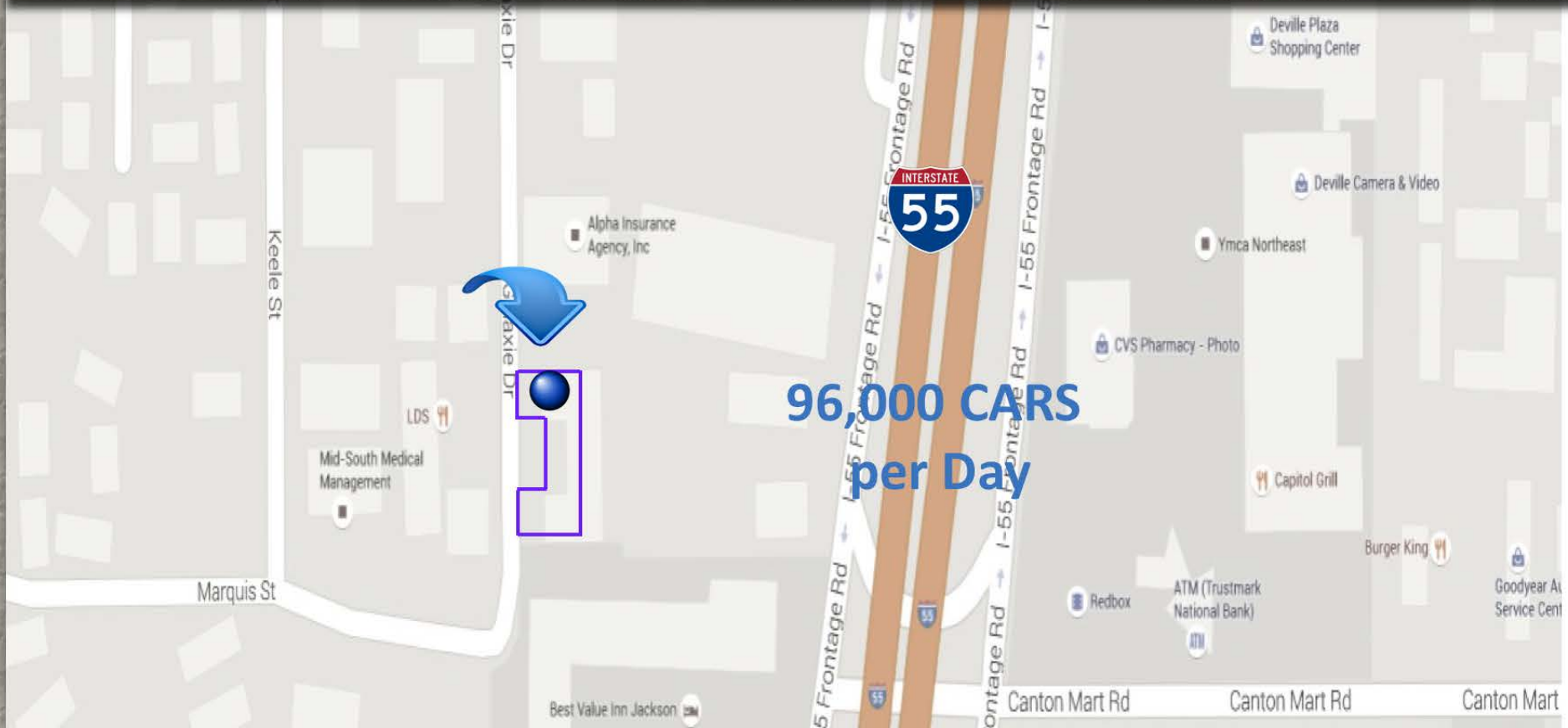
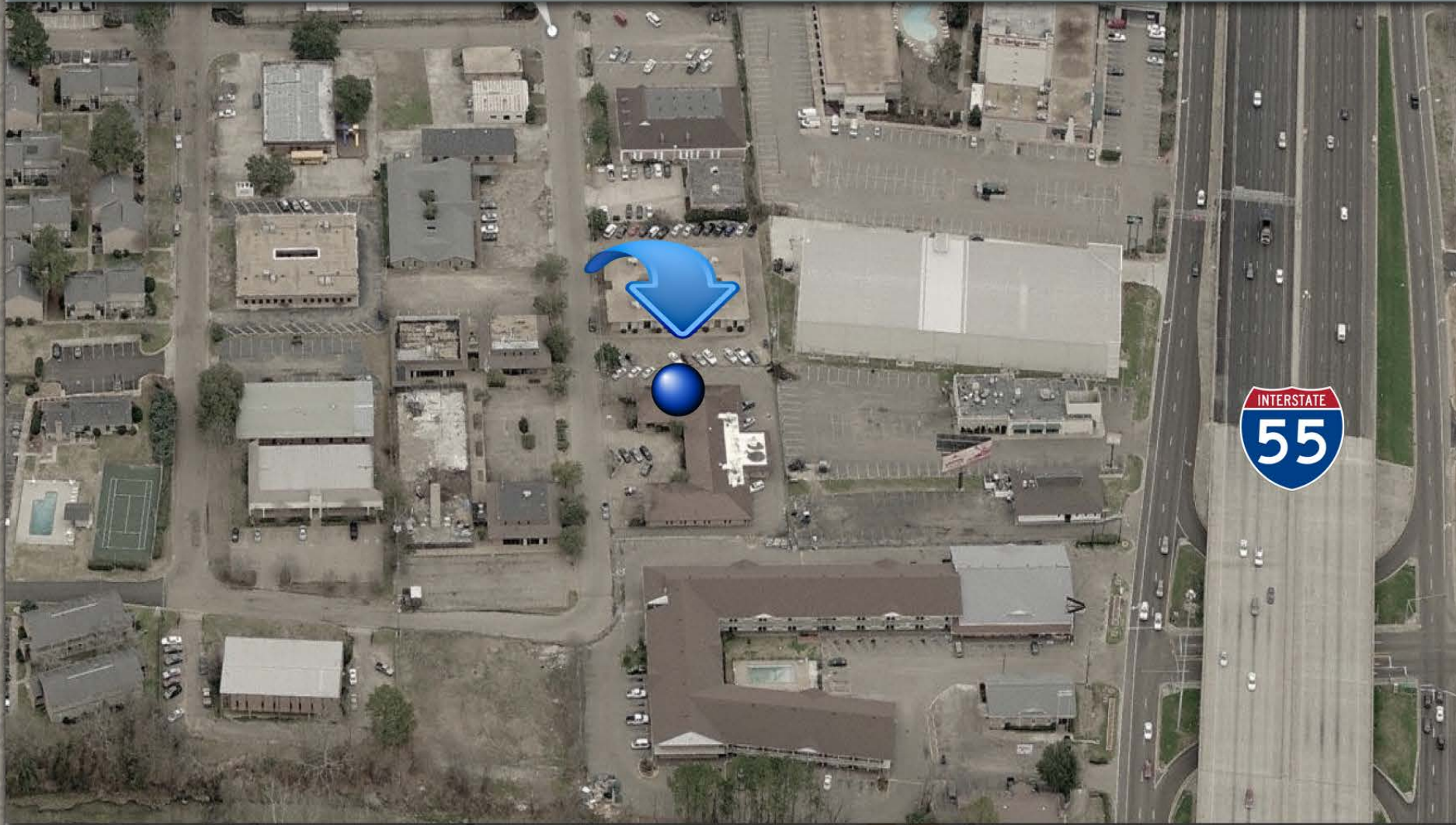


AERIAL & TRAFFIC COUNT

➔ MENU

5120 **GALAXIE DR.**
JACKSON, MS

Interactive
➔ Options



**96,000 CARS
per Day**

**ELEGANT
FINISHED
OFFICE**



Josh Varon
Grace Properties
1213 Ellis Ave
JACKSON, MS
(601) 336-0770

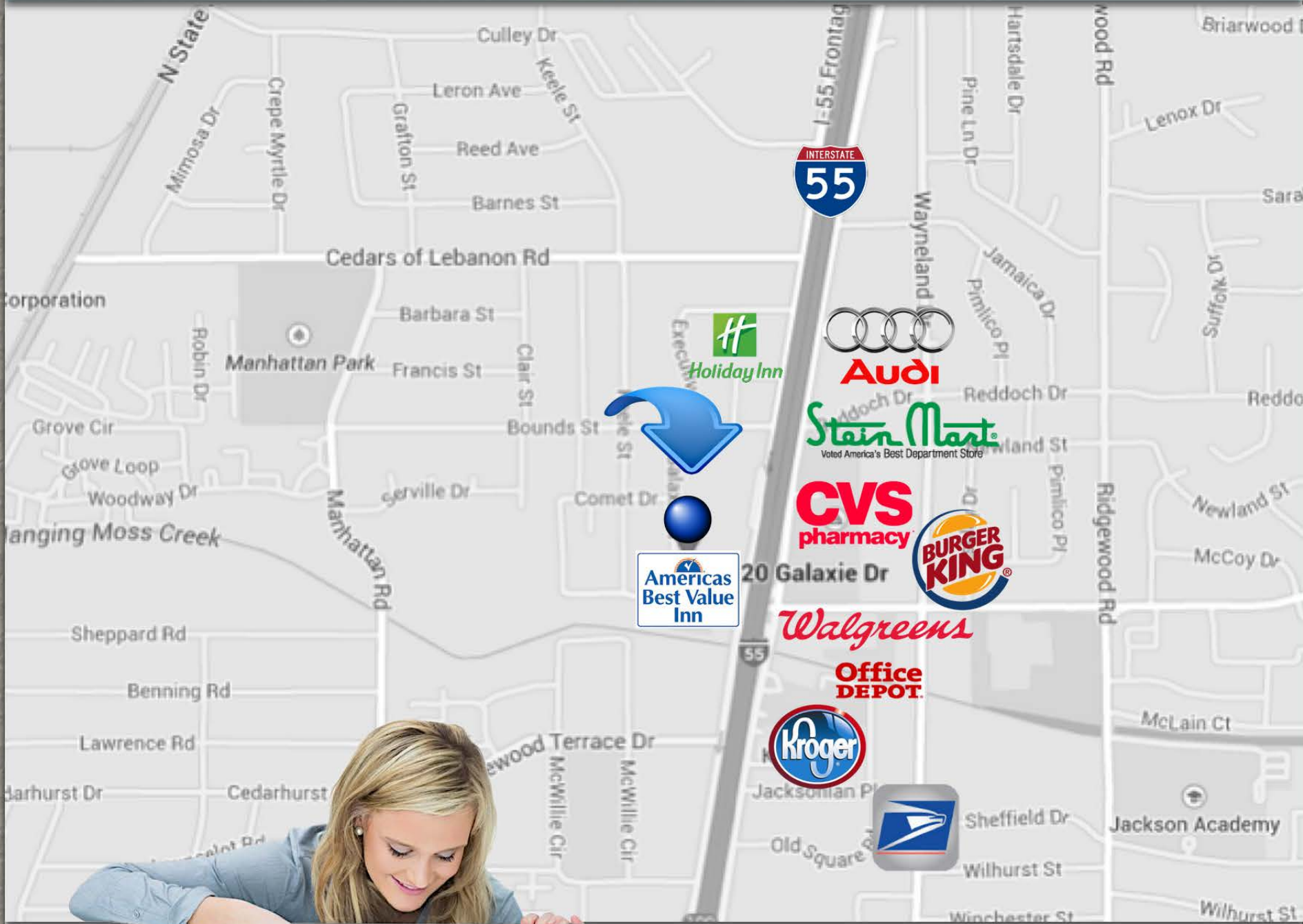


SHARE

BUSINESSES around

➔ MENU

5120 **GALAXIE DR.**
JACKSON, MS



Interactive
➔ Options



Josh Varon
Grace Properties
1213 Ellis Ave
JACKSON, MS
(601) 336-0770

 **SHARE**

Truly **ELEGANT**

Right off **I-55**

~~Nice office~~

~~Easy Access~~

**ELEGANT
FINISHED
OFFICE**