

# FOR SALE

## VACANT LAND

ETHANAC RD & DAWSON RD | MENIFEE, CA

± 9.70 ACRES

**FREEWAY ACCESS**

**SECURED FENCED YARD**

**SP ZONING**

**ALMOST ALL USEABLE**



### PROPERTY FEATURES

- › FORMER OUTSIDE CONSTRUCTION LAYDOWN YARD
- › IMMEDIATE ACCESS TO I-215 FREEWAY VIA ETHANAC ROAD
- › FLAT WELL GRADED STONED SITE
- › SP ZONING
- › SECURED FENCED YARD
- › APN#331-150-036



**MARIO CAVILLO**  
**951.276.3657**

mcalvillo@lee-associates.com  
License ID# 01911573

[www.lee-associates.com](http://www.lee-associates.com)



**DAVID KIMBALL**  
**213.553.3801**

dkimball@savills-studley.com  
License ID# 01226512

[www.savills-studley.com](http://www.savills-studley.com)

No warranty or representation has been made to the accuracy of the foregoing information. Terms of sale or lease and availability are subject to change or withdrawal without notice. Lee & Associates Commercial Real Estate Services, Inc. - Riverside.  
3240 Mission Inn Avenue, Riverside, CA 92507 | Corporate ID# 01048055

# FOR SALE

# VACANT LAND

ETHANAC RD & DAWSON RD | MENIFEE, CA

± 9.70 ACRES



**LEE & ASSOCIATES**  
COMMERCIAL REAL ESTATE SERVICES

**MARIO CAVILLO**  
951.276.3657

mcalvillo@lee-associates.com  
License ID# 01911573

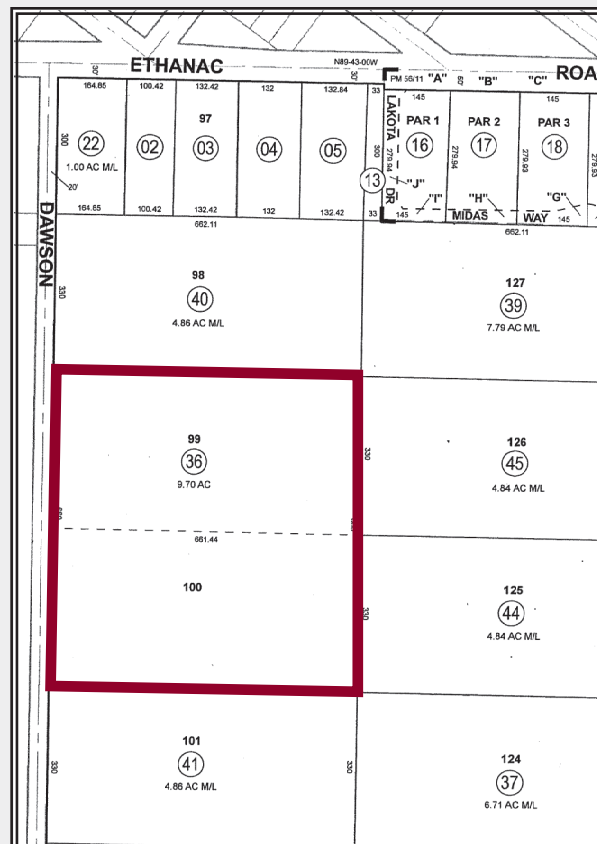
www.lee-associates.com

**savills**  
Studley

**DAVID KIMBALL**  
213.553.3801

dkimball@savills-studley.com  
License ID# 01226512

www.savills-studley.com



No warranty or representation has been made to the accuracy of the foregoing information. Terms of sale or lease and availability are subject to change or withdrawal without notice. Lee & Associates Commercial Real Estate Services, Inc. - Riverside.  
3240 Mission Inn Avenue, Riverside, CA 92507 | Corporate ID# 01048055