



**KICKSLA**

**RARE SMALL MONTANA AVENUE RETAIL FOR LEASE**

1603 MONTANA AVENUE, SANTA MONICA, CA 90403

David Ashkenasy  
Executive Vice President  
P 310.272.7381  
E [davida@cag-re.com](mailto:davida@cag-re.com)  
Lic. 01714442

Ryan Schimel  
Director  
P 310.272.7384  
E [ryans@cag-re.com](mailto:ryans@cag-re.com)  
Lic. 01879511

David Ickovics  
Principal  
P 310.272.7380  
E [dji@cag-re.com](mailto:dji@cag-re.com)  
Lic. 01315424

**cag** | COMMERCIAL  
ASSET GROUP



## MONTANA AVENUE RETAIL SPACE

1603 MONTANA AVENUE, SANTA MONICA, CA 90403

### Highlights

- Rare Small Space on Montana
- Great High End Retail Corridor
- In the Heart of Montana Avenue - Surrounded by Amazing Salons, Restaurants and Retailers
- Home to Many Local, National and Regional Brands/Tenants
- Directly Adjacent to Bardonna, Montana Avenue's Newest Coffee Shop & Cafe
- Neighboring Tenants Include Williams Sonoma, Pinkberry, Bellacures, Sweet Lady Jane and Many Others

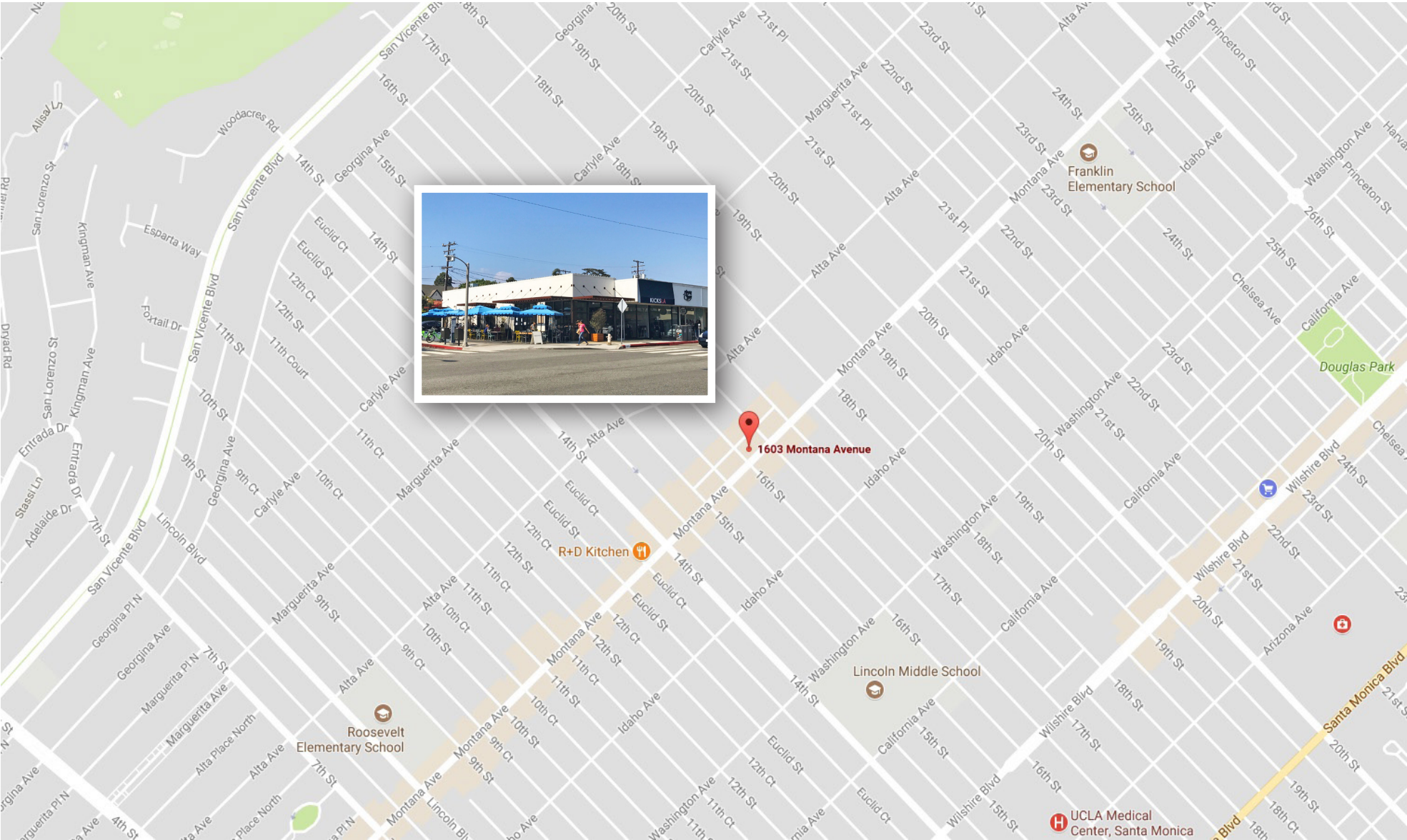
### Property Details

<b>Size:</b>	+/- 450 SF
<b>Rate:</b>	\$4,000/Month Modified Gross
<b>Available:</b>	Immediately

These materials are based on information and content provided by others, which we believe are accurate. No guarantee, warranty or representation is made by Commercial Asset Group, Inc. or its personnel. All interested parties must independently verify accuracy and completeness. As well, any projections, assumptions, opinion, or estimates are used for example only and do not represent the current or future performance of the identified property. Your tax, financial, legal and toxic substance advisors should conduct a careful investigation of the property and its suitability for your needs, including land use limitations. The property is subject to prior lease, sale, change in price, or withdrawal from the market without notice.

# MAP

1603 MONTANA AVENUE, SANTA MONICA, CA 90403





For more information, please call.



David Ashkenasy  
Executive Vice President  
P 310.272.7381  
E [davida@cag-re.com](mailto:davida@cag-re.com)  
Lic: 01714442

Ryan Schimel  
Director  
P 310.272.7384  
E [ryans@cag-re.com](mailto:ryans@cag-re.com)  
Lic: 01879511

David Ickovics  
Principal  
P 310.272.7380  
E [dji@cag-re.com](mailto:dji@cag-re.com)  
Lic. 01315424

Commercial Asset Group  
1801 Century Park East, Suite 1550  
Los Angeles, CA 90067  
P 310.275.8222  
[www.cag-re.com](http://www.cag-re.com)  
Lic. 01876070

These materials are based on information and content provided by others, which we believe are accurate. No guarantee, warranty or representation is made by Commercial Asset Group, Inc. or its personnel. All interested parties must independently verify accuracy and completeness. As well, any projections, assumptions, opinion, or estimates are used for example only and do not represent the current or future performance of the identified property. Your tax, financial, legal and toxic substance advisors should conduct a careful investigation of the property and its suitability for your needs, including land use limitations. The property is subject to prior lease, sale, change in price, or withdrawal from the market without notice.