

VACANT LAND ROUND LAKE BEACH IL

155 E ACRE STREET/1784 N. ORCHARD LANE, ROUND LAKE BEACH, IL 60073 // LAND FOR SALE



FOR MORE INFORMATION CONTACT:

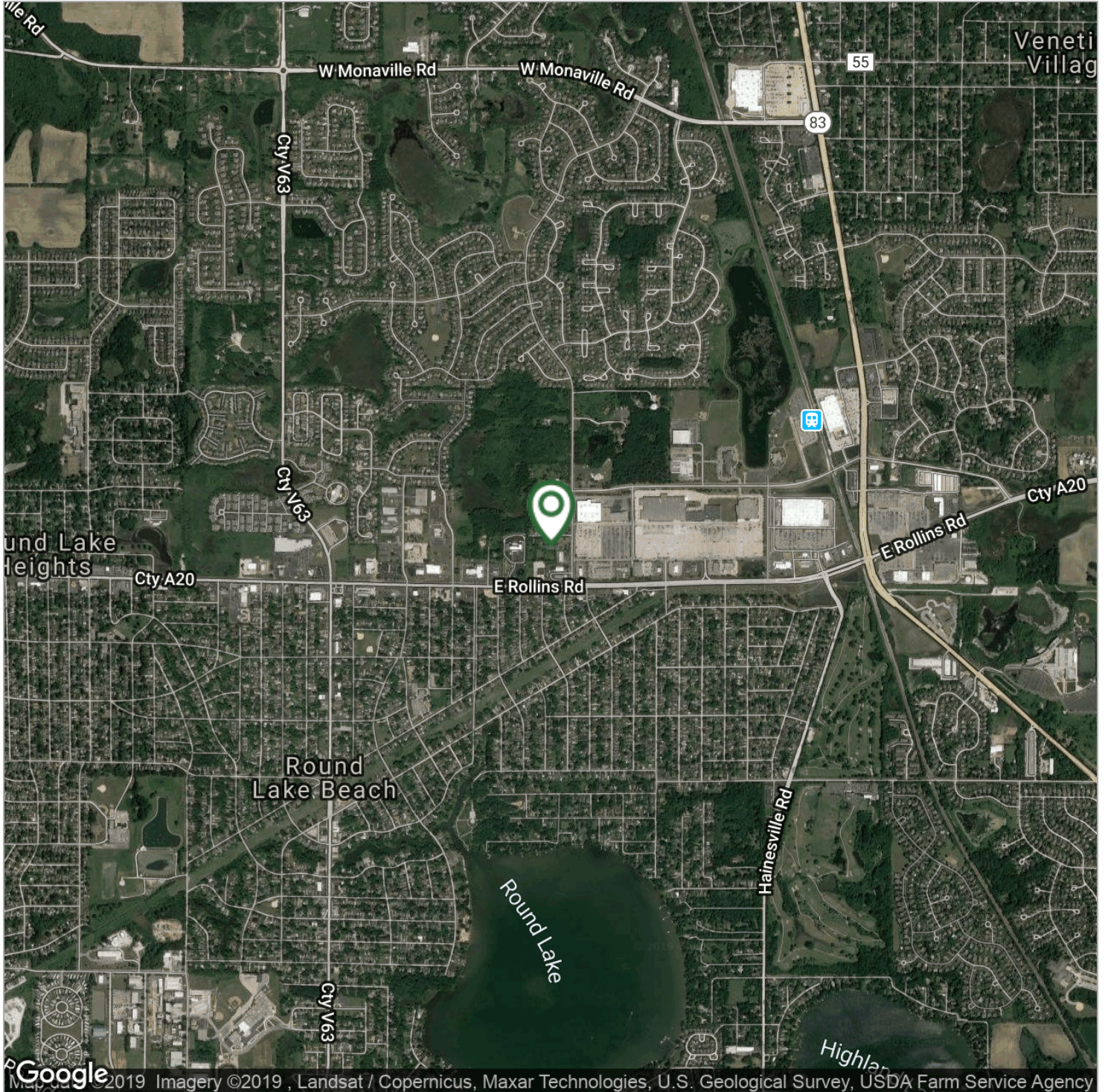
BARRY J. MILLMAN
224.434.2731
bmillman@horizonrealtyservices.com

HORIZON REALTY SERVICES
1540 E. DUNDEE ROAD, SUITE 240, PALATINE, IL 60074
847.870.8585 // HORIZONREALTYSERVICES.COM

All information provided herein is from sources deemed reliable. No representation is made as to the accuracy thereof and it is submitted subject to its errors, omissions, changes, prior sale or lease or withdrawal without notice. Any projections, assumptions, and estimates, are presented as examples and may not represent actual performance. Recipients are encouraged to perform independent investigation of the property presented to their satisfaction.

VACANT LAND ROUND LAKE BEACH IL

155 E ACRE STREET/1784 N. ORCHARD LANE, ROUND LAKE BEACH, IL 60073 // LAND FOR SALE



FOR MORE INFORMATION CONTACT:

BARRY J. MILLMAN
224.434.2731
bmillman@horizonrealtyservices.com

HORIZON REALTY SERVICES
1540 E. DUNDEE ROAD, SUITE 240, PALATINE, IL 60074
847.870.8585 // HORIZONREALTYSERVICES.COM

All information provided herein is from sources deemed reliable. No representation is made as to the accuracy thereof and it is submitted subject to its errors, omissions, changes, prior sale or lease or withdrawal without notice. Any projections, assumptions, and estimates, are presented as examples and may not represent actual performance. Recipients are encouraged to perform independent investigation of the property presented to their satisfaction.

VACANT LAND ROUND LAKE BEACH IL

155 E ACRE STREET/1784 N. ORCHARD LANE, ROUND LAKE BEACH, IL 60073 // LAND FOR SALE

PROPERTY OVERVIEW

The property is just north of Thornton's Gas Station and Advance Auto Parts, and is surrounded by national tenants. The Round Lake Beach Police Station is just north of the site.

LOCATION OVERVIEW

Situated just south of Rollins Road and West of the Primary intersection of Route 83 and Rollins Road. The property is directly across from A Kohl's Department Store anchored Center, and continues west along Acre Cout.

SITE DESCRIPTION

Enter text here...

ZONING

Retail, Medical , Residential

FOR MORE INFORMATION CONTACT:

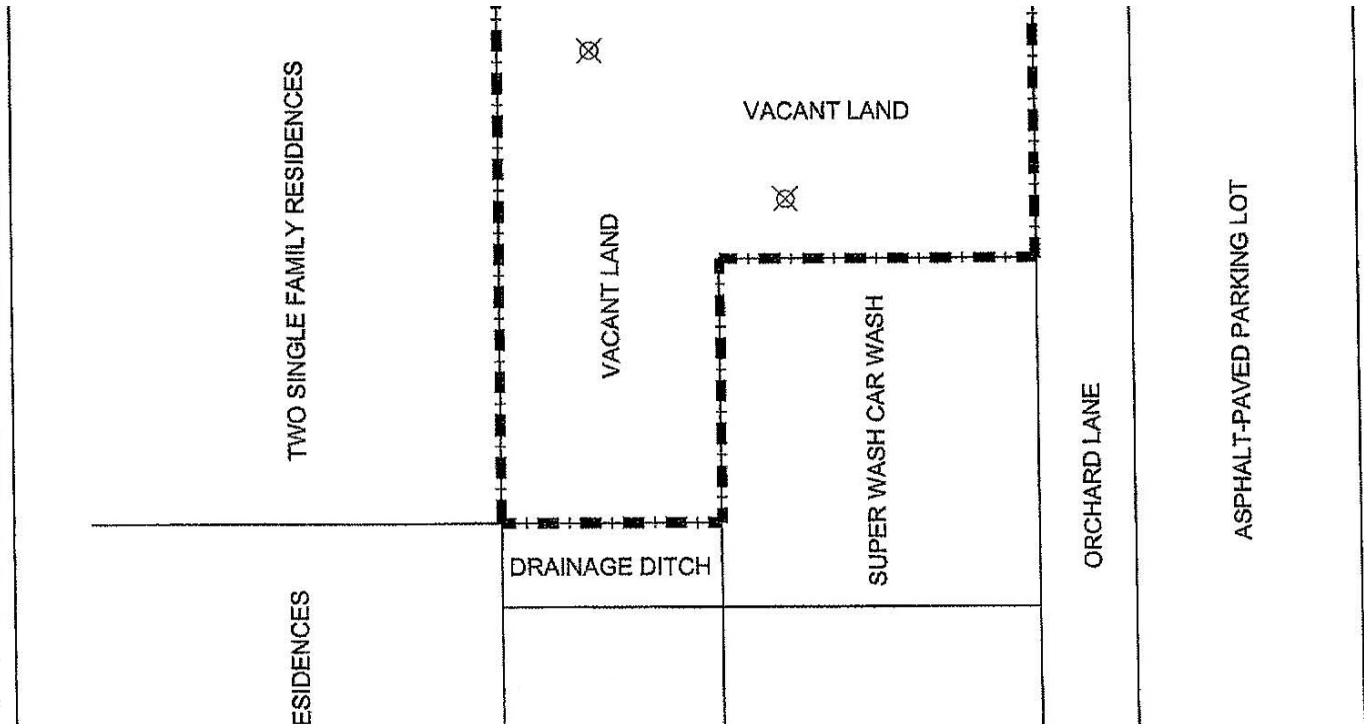
BARRY J. MILLMAN
224.434.2731
bmillman@horizonrealtyservices.com

HORIZON REALTY SERVICES
1540 E. DUNDEE ROAD, SUITE 240, PALATINE, IL 60074
847.870.8585 // HORIZONREALTYSERVICES.COM

All information provided herein is from sources deemed reliable. No representation is made as to the accuracy thereof and it is submitted subject to its errors, omissions, changes, prior sale or lease or withdrawal without notice. Any projections, assumptions, and estimates, are presented as examples and may not represent actual performance. Recipients are encouraged to perform independent investigation of the property presented to their satisfaction.

VACANT LAND ROUND LAKE BEACH IL

155 E ACRE STREET/1784 N. ORCHARD LANE, ROUND LAKE BEACH, IL 60073 // LAND FOR SALE



OFFERING SUMMARY

Sale Price: \$5.00 / SF

Lot Size: 2.0 Acres

Zoning: Retail, Medical, Residential

Market: North west Lake County

Submarket: Round Lake area

Price / SF: \$5.00

PROPERTY OVERVIEW

The property is just north of Thornton's Gas Station and Advance Auto Parts, and is surrounded by national tenants. The Round Lake Beach Police Station is just north of the site.

DEMOGRAPHICS

	1 MILE	3 MILES	5 MILES
Total Households	3,009	23,717	46,556
Total Population	10,910	75,064	139,260
Average HH Income	\$69,466	\$78,475	\$86,810

FOR MORE INFORMATION CONTACT:

BARRY J. MILLMAN
224.434.2731
bmillman@horizonrealtyservices.com

HORIZON REALTY SERVICES
1540 E. DUNDEE ROAD, SUITE 240, PALATINE, IL 60074
847.870.8585 // HORIZONREALTYSERVICES.COM

All information provided herein is from sources deemed reliable. No representation is made as to the accuracy thereof and it is submitted subject to its errors, omissions, changes, prior sale or lease or withdrawal without notice. Any projections, assumptions, and estimates, are presented as examples and may not represent actual performance. Recipients are encouraged to perform independent investigation of the property presented to their satisfaction.

VACANT LAND ROUND LAKE BEACH IL

155 E ACRE STREET/1784 N. ORCHARD LANE, ROUND LAKE BEACH, IL 60073 // LAND FOR SALE

SALE PRICE

\$5.00 / SF

LOCATION INFORMATION

Building Name	Vacant Land Round Lake Beach IL
Street Address	155 E Acre Street/1784 N. Orchard Lane
City, State, Zip	Round Lake Beach, IL 60073
County/Township	Lake
Market	North west Lake County
Submarket	Round Lake area
Cross Streets	Rollins Road and Orchard Lane

LAND

Number Of Lots	1
Best Use	Retail, Automotive, Medical

PROPERTY DETAILS

Property Type	Land
Property Subtype	Other
Zoning	Retail, Medical , Residential
Lot Size	2 Acres

FOR MORE INFORMATION CONTACT:

BARRY J. MILLMAN
224.434.2731
bmillman@horizonrealtyservices.com

HORIZON REALTY SERVICES
1540 E. DUNDEE ROAD, SUITE 240, PALATINE, IL 60074
847.870.8585 // HORIZONREALTYSERVICES.COM

VACANT LAND ROUND LAKE BEACH IL

155 E ACRE STREET/1784 N. ORCHARD LANE, ROUND LAKE BEACH, IL 60073 // LAND FOR SALE



FOR MORE INFORMATION CONTACT:

BARRY J. MILLMAN
224.434.2731
bmillman@horizonrealtyservices.com

HORIZON REALTY SERVICES
1540 E. DUNDEE ROAD, SUITE 240, PALATINE, IL 60074
847.870.8585 // HORIZONREALTYSERVICES.COM

All information provided herein is from sources deemed reliable. No representation is made as to the accuracy thereof and it is submitted subject to its errors, omissions, changes, prior sale or lease or withdrawal without notice. Any projections, assumptions, and estimates, are presented as examples and may not represent actual performance. Recipients are encouraged to perform independent investigation of the property presented to their satisfaction.