



THE *P*ROMENADE  
AT POINT LOMA

4960 - 4990 N. Harbor Drive | San Diego, CA 92106



# FEATURES



Located on North Harbor Drive with immediate access to the San Diego Airport and I-5



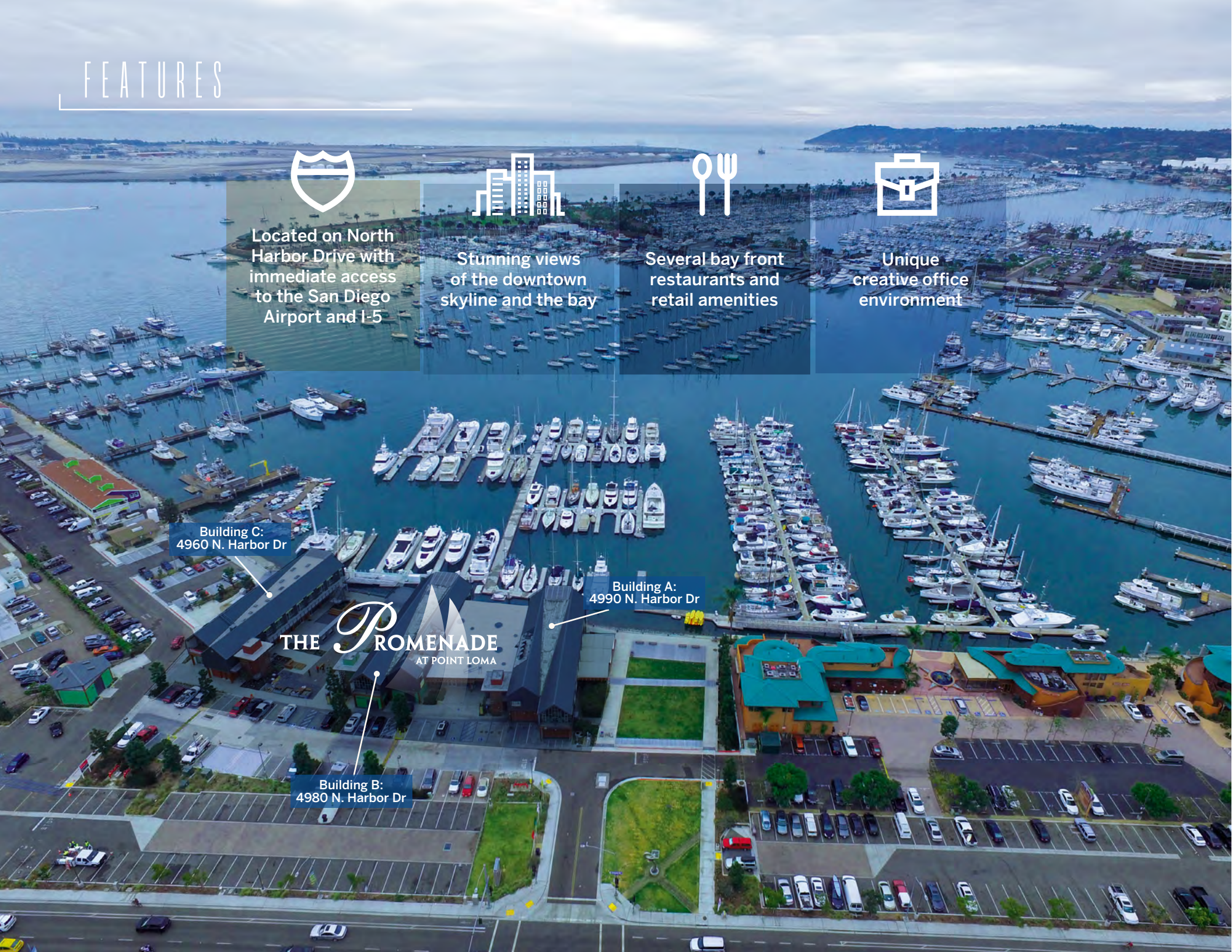
Stunning views of the downtown skyline and the bay



Several bay front restaurants and retail amenities



Unique creative office environment



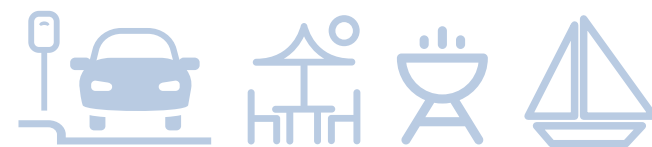
Building C:  
4960 N. Harbor Dr

Building A:  
4990 N. Harbor Dr

THE PROMENADE  
AT POINT LOMA

Building B:  
4980 N. Harbor Dr

# AMENITIES



Free parking (19/1,000 RSF), outdoor seating with fire pit, vessel slips at the Point Loma Marina, and Bay Access offering Dock 'N Dine, Water Taxis and more.

Fiber & Internet available through Cox.



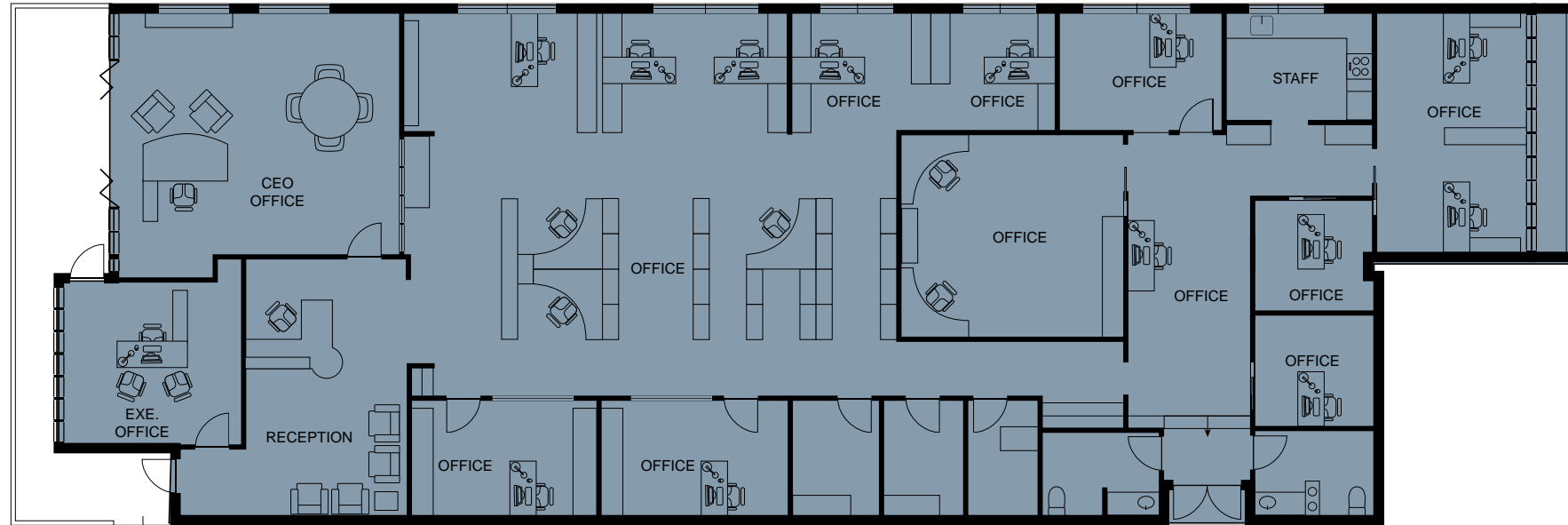


# AVAILABILITY

4990 BUILDING - BUILDING A



Level 2



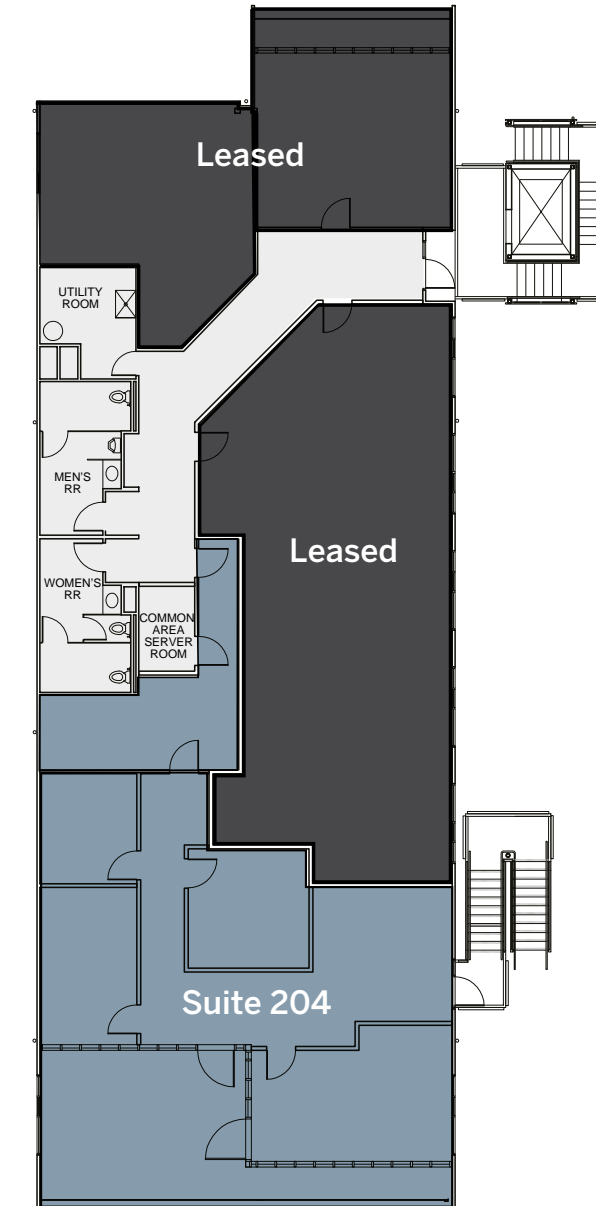
5,509 RSF  
Vacant  
\$4.65 + E

# AVAILABILITY

4980 BUILDING - BUILDING B



Level 2

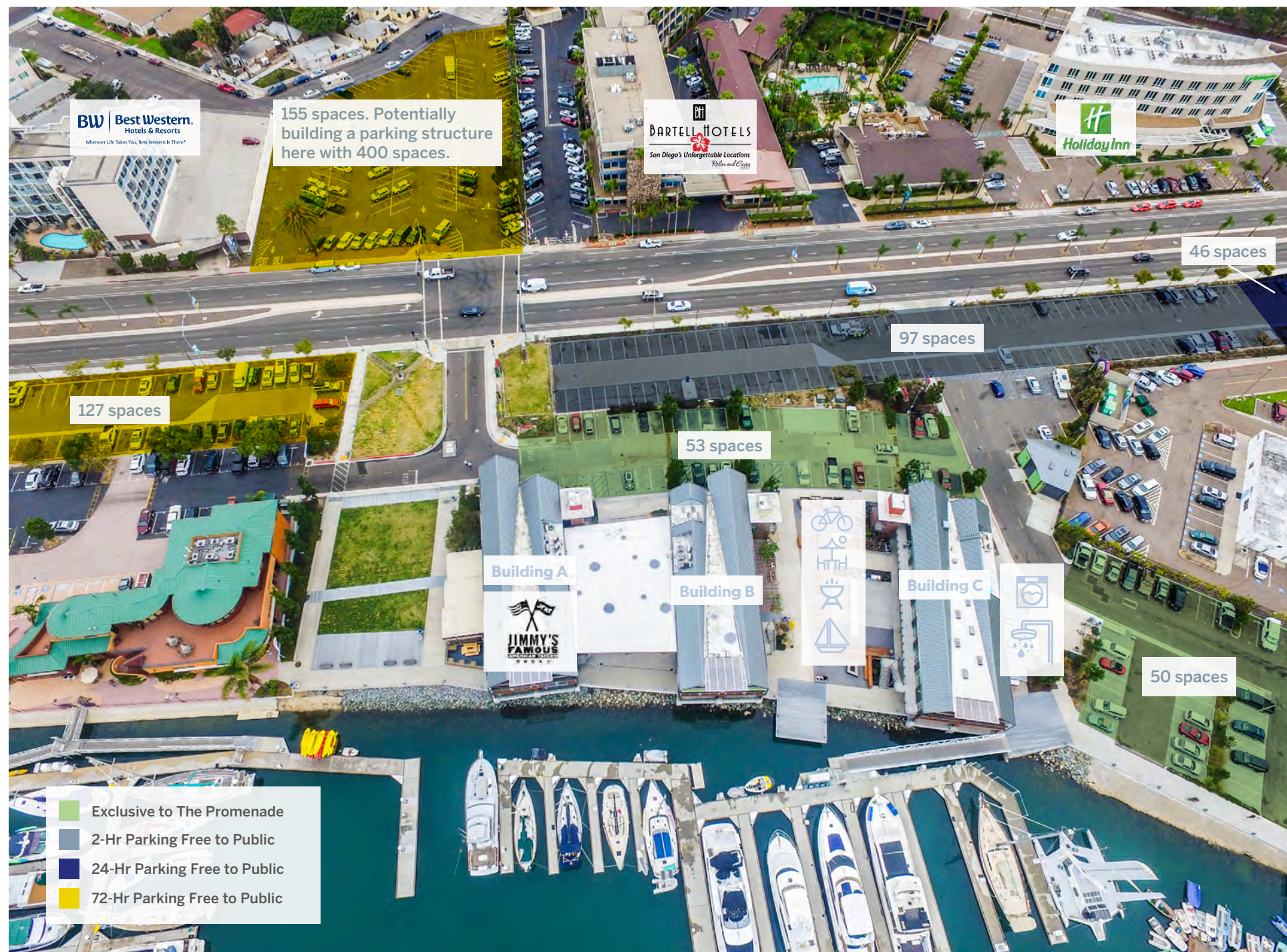


2,112 RSF  
Vacant  
\$4.65 + E





## SITE PLAN







**TIMES/DISTANCES**  
From The Promenade

<b>GASLAMP QUARTER</b> 4.8 miles / 15 mins	<b>LITTLE ITALY</b> 3.6 Miles / 11 mins	<b>SUNSET CLIFFS</b> 3.0 Miles / 10 mins
<b>CORONADO FERRY (Broadway Pier)</b> 3.7 Miles / 8 mins	<b>OLD TOWN</b> 3.1 Miles / 12 mins	<b>HILLCREST</b> 4.8 Miles / 13 mins
<b>SAN DIEGO AIRPORT</b> 1.9 Miles / 4 mins	<b>DOWNTOWN SAN DIEGO</b> 5 Miles / 16 mins	

# TENANTS



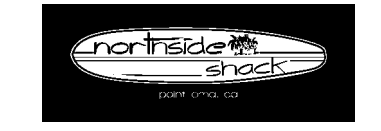
Bayside



STARBUCKS



PIZZA NOVA







# THE PROMENADE AT POINT LOMA

**Scott Kincaid**

Lic. 01228568

+1 858 546 4691

scott.kincaid@cbre.com

**Nick Bonner**

Lic. 01482997

+1 858 646 4777

nick.bonner@cbre.com

**Krista Kirksey**

Lic. 01405552

+1 858 546 4680

krista.kirksey@cbre.com

© 2019 CBRE, Inc. All rights reserved. This information has been obtained from sources believed reliable, but has not been verified for accuracy or completeness. You should conduct a careful, independent investigation of the property and verify all information. Any reliance on this information is solely at your own risk. CBRE and the CBRE logo are service marks of CBRE, Inc. All other marks displayed on this document are the property of their respective owners. Photos herein are the property of their respective owners and use of these images without the express written consent of the owner is prohibited.

**CBRE**

4301 La Jolla Village Drive  
Suite 3000  
San Diego, CA 92122

CBRE, INC.  
Broker Lic. 00409987