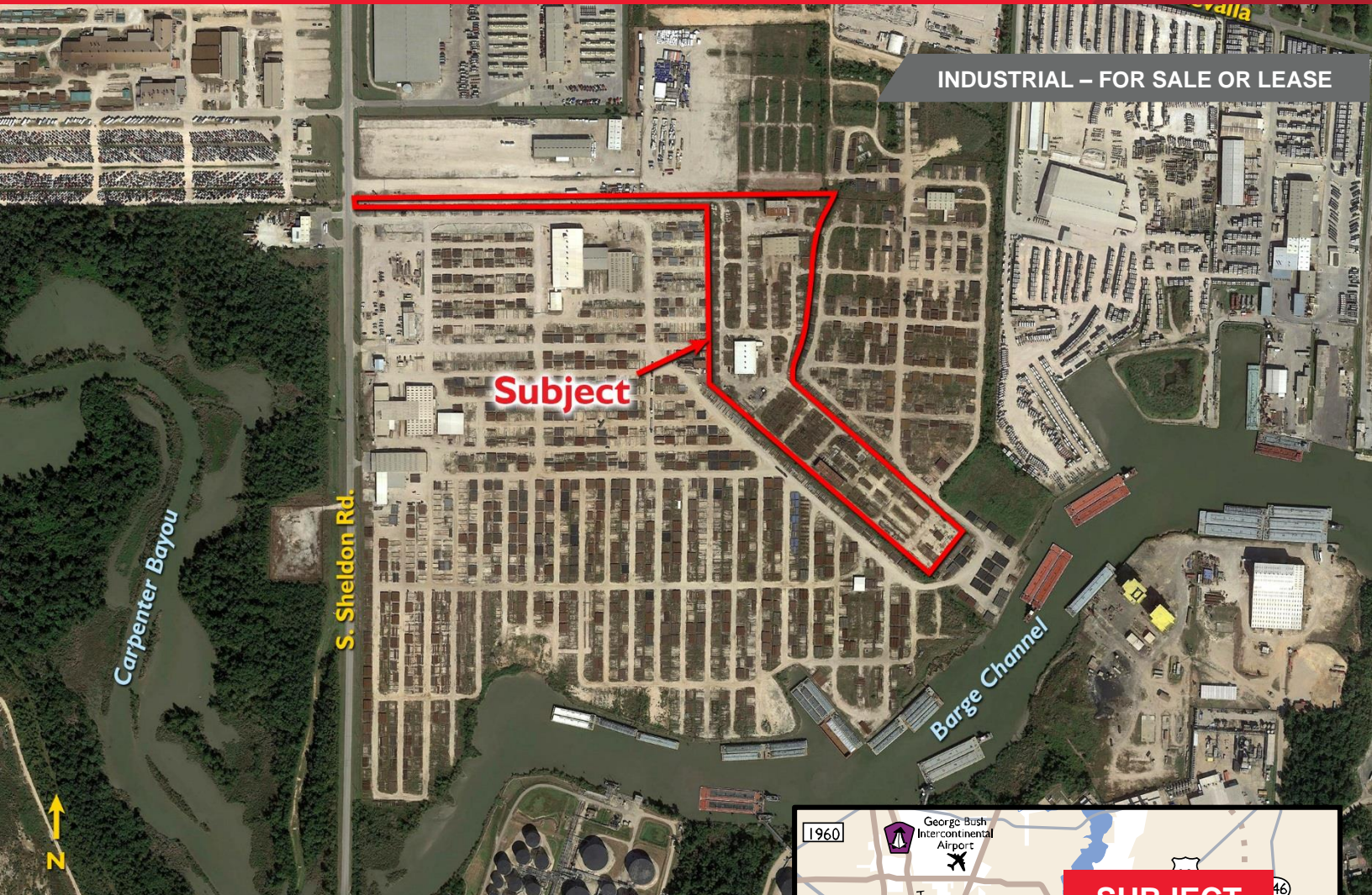


INDUSTRIAL – FOR SALE OR LEASE



Sale Price: \$3,400,000 (\$4.79 PSF)

Lease Rate: \$1,550/ Acre/Month/NNN

Overview

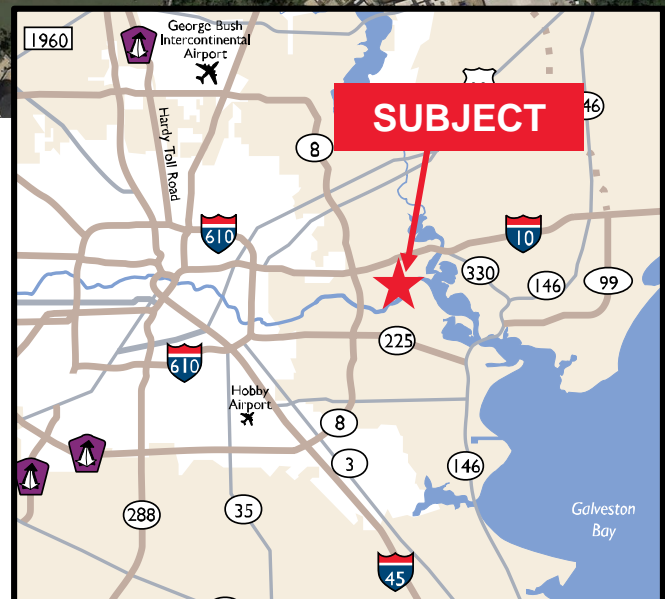
• 40,050 SF

Land

• 16.280 Acres

Highlights

- Easy access to I-10
- Approximately 2.5 miles from Jacintoport and Port of Houston Care Terminal
- Outside 500 year floodplain
- Former pipe yard
- Ownership will retrofit to suit



For more information, contact:

Andrew Jewett

(713) 345 1433

andrew.jewett@cushwake.com

1330 Post Oak Boulevard

Suite 2700

Houston, TX 77056

cushmanwakefield.com



437 South Sheldon Rd.
Channelview, TX 77530

Laydown Yard in Heart of the Houston Ship Channel



For more information, contact:

Andrew Jewett
(713) 345 1433
andrew.jewett@cushwake.com

1330 Post Oak Boulevard
Suite 2700
Houston, TX 77056

cushmanwakefield.com