

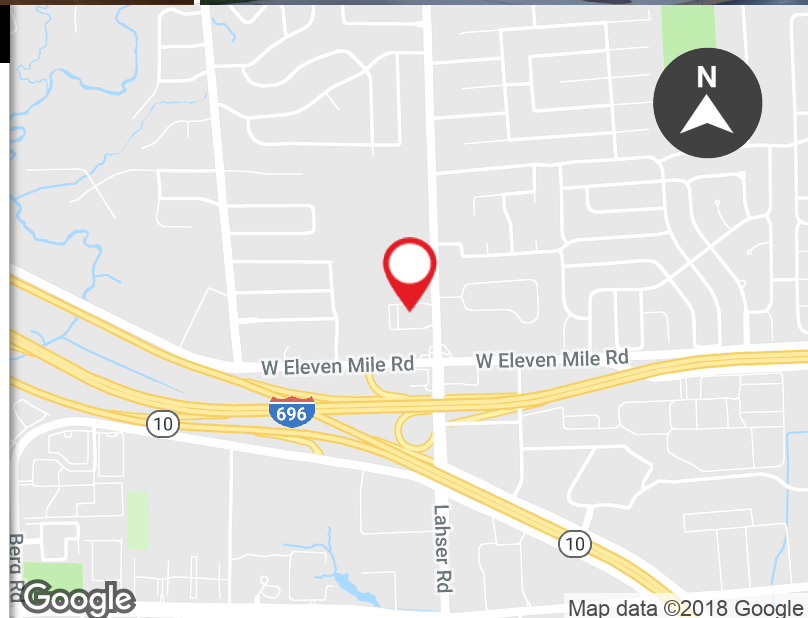
FOR LEASE

LAHSER MEDICAL CAMPUS
27177-27211 LAHSER RD
SOUTHFIELD, MI 48034



PROPERTY FEATURES:

- Exceptional medical campus in central Southfield location
- Suites available from 801 SF to 12,178 SF
- Great location with direct access to I-696 and Northwestern Highway
- New ownership and management
- Immediate occupancy
- Leasehold improvements available
- Lobby renovations recently completed



FOR MORE INFORMATION PLEASE CONTACT:

ROBERT MOON
robert.moon@freg.com

248.324.2000

eCODE 104

The information provided herein along with any attachment(s) was obtained from sources believed to be reliable, however, Friedman Real Estate makes no guarantees, warranties, or representations as to the completeness or accuracy of such information and legal counsel is advised. All information provided is subject to verification and no liability for reliance on such information or errors or omissions is assumed. The presentation of this property is submitted subject to errors, omissions, change of price or conditions, prior sale or lease, or withdrawal without notice. Copyright © 2018 Friedman Real Estate. All rights reserved.

FOR LEASE

LAHSER MEDICAL CAMPUS
27177-27211 LAHSER RD
SOUTHFIELD, MI 48034



AVAILABLE SUITES

SPACE	SPACE USE	LEASE RATE	LEASE TYPE	SIZE (SF)	TERM
SUITE I-102	Medical	\$15.95 SF/yr	Gross	1,183 SF	Negotiable
SUITE I-200	Medical	\$15.95 SF/yr	Gross	3,183 SF	Negotiable
SUITE I-201	Medical	\$15.95 SF/yr	Gross	903 SF	Negotiable
SUITE III-150	Medical	\$15.95 SF/yr	Gross	801 SF	Negotiable
SUITE III-200	Medical	\$15.95 SF/yr	Gross	5,473 SF	Negotiable
SUITE III-205	Medical	\$15.95 SF/yr	Gross	1,635 SF	Negotiable
SUITE III-206	Medical	\$15.95 SF/yr	Gross	2,956 SF	Negotiable
SUITE IV-220	Medical	\$15.95 SF/yr	Gross	2,444 SF	Negotiable
SUITE IV-221	Medical	\$15.95 SF/yr	Gross	1,684 SF	Negotiable
SUITE IV-225	Medical	\$15.95 SF/yr	Gross	1,266 SF	Negotiable

FOR MORE INFORMATION PLEASE CONTACT:

ROBERT MOON robert.moon@freg.com

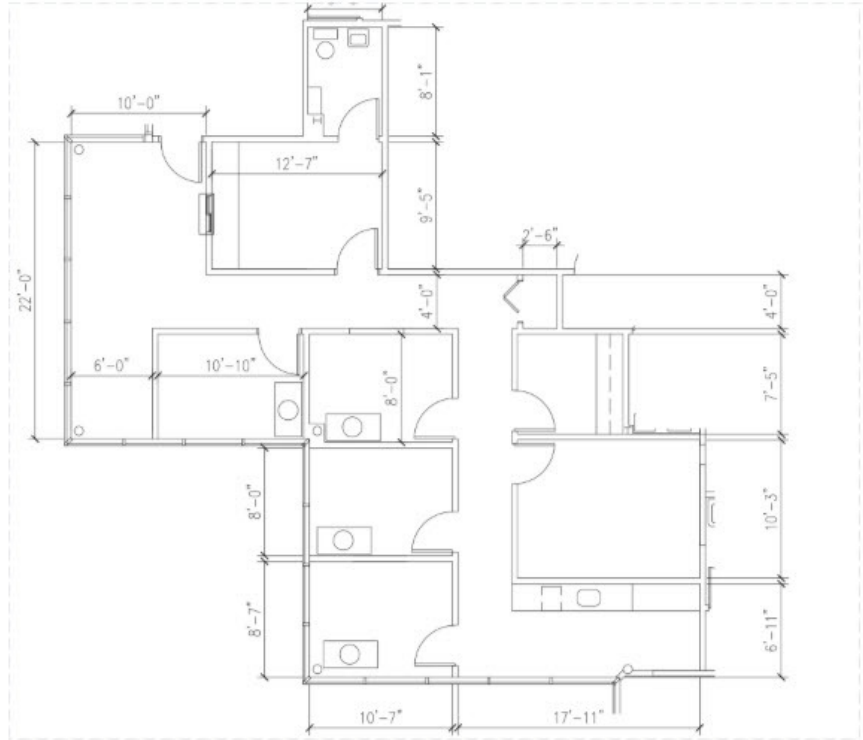
248.324.2000
eCODE 104

FOR LEASE

LAHSER MEDICAL CAMPUS
27177-27211 LAHSER RD
SOUTHFIELD, MI 48034



First Floor



LAHSER MEDICAL IV SUITE 220 — 2,444 SF AVAILABLE

Second Floor



FOR MORE INFORMATION PLEASE CONTACT:

ROBERT MOON robert.moon@freg.com

248.324.2000

eCODE 104