

9256 BENDIX ROAD

9256 Bendix Road, Columbia, MD 21045
Howard County



FOR LEASE

Suite Highlights

- Available for lease: Suite 205 - ±3,300 SF
- Class A office space
- Corner suite in shell condition
- Separately metered utilities and energy efficient construction
- High-speed internet access available
- Access to large conference room / training room
- Lighted surface parking available at a ratio of 4/1,000 SF leased

- 9' finished ceiling heights
- For lease: \$22/SF plus utilities and janitorial

Building Highlights

- Three-story Class A office building totaling 70,000 SF
- Built in 2008
- Excellent access to I-695, I-95 and Routes 70, 40 & 29
- Professional Property Management provided by American Community Management

Jesse Schwartzman
jschwartzman@klnb.com
443-632-2067

Brad Berzins, SIOR
bberzins@klnb.com
443-632-2048

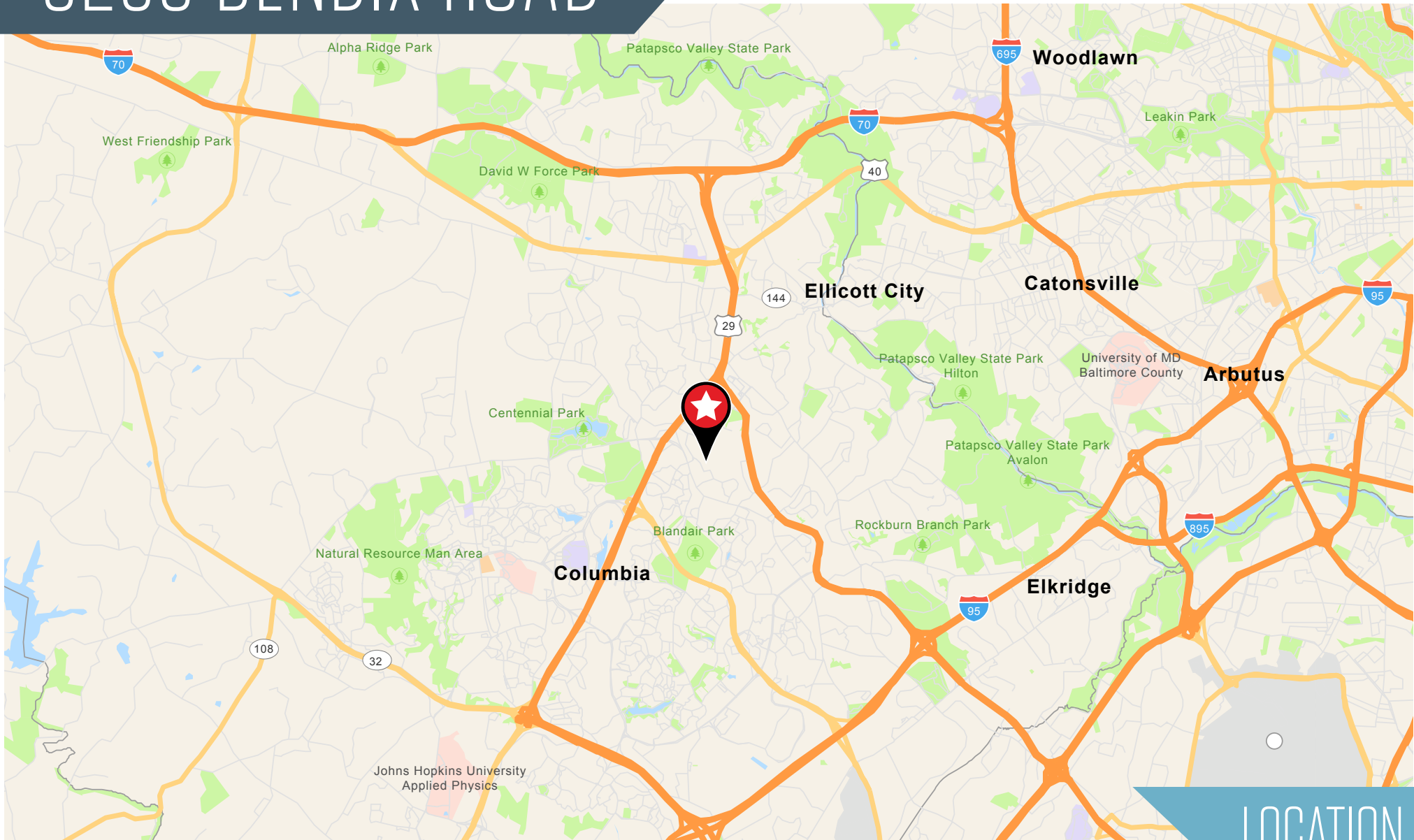
Abby Glassberg
aglassberg@klnb.com
443-574-1433

100 West Road, Suite 505
Baltimore, MD 21204
klnb.com



9256 BENDIX ROAD

9256 Bendix Road, Columbia, MD 21045
Howard County



Jesse Schwartzman
jschwartzman@klnb.com
443-632-2067

Brad Berzins, SIOR
bberzins@klnb.com
443-632-2048

Abby Glassberg
aglassberg@klnb.com
443-574-1433

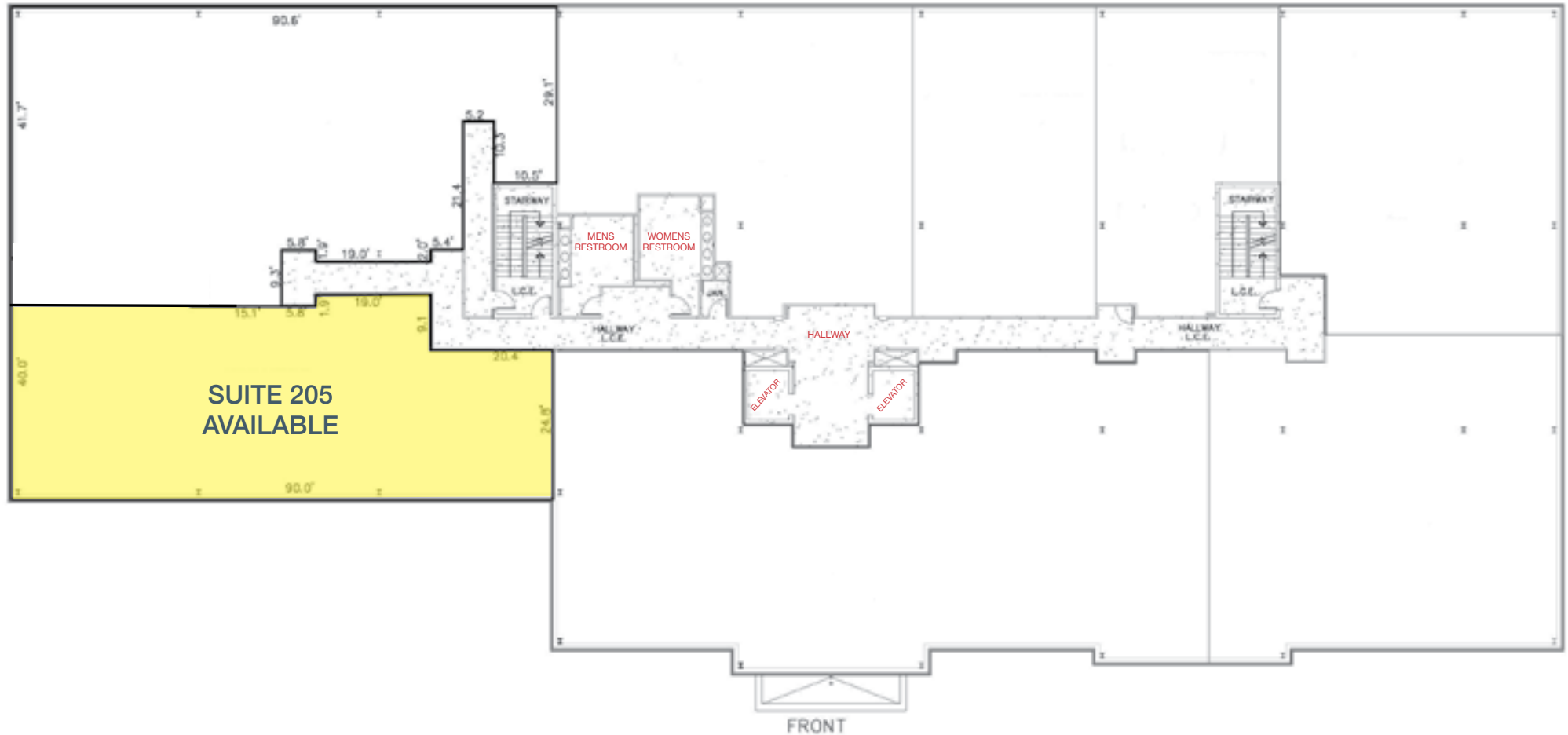
100 West Road, Suite 505
Baltimore, MD 21204
klnb.com



9256 BENDIX ROAD

9256 Bendix Road, Columbia, MD 21045
Howard County

2nd Floor Plan for Building "B"



SITE PLAN

Jesse Schwartzman
jschwartzman@klnb.com
443-632-2067

Brad Berzins, SIOR
bberzins@klnb.com
443-632-2048

Abby Glassberg
aglassberg@klnb.com
443-574-1433

100 West Road, Suite 505
Baltimore, MD 21204
klnb.com



9256 BENDIX ROAD

9256 Bendix Road, Columbia, MD 21045
Howard County



INTERIOR OFFICE SUITE

Jesse Schwartzman
jschwartzman@klnb.com
443-632-2067

Brad Berzins, SIOR
bberzins@klnb.com
443-632-2048

Abby Glassberg
aglassberg@klnb.com
443-574-1433

100 West Road, Suite 505
Baltimore, MD 21204
klnb.com



9256 BENDIX ROAD

9256 Bendix Road, Columbia, MD 21045
Howard County



PHOTO

Jesse Schwartzman
jschwartzman@klnb.com
443-632-2067

Brad Berzins, SIOR
bberzins@klnb.com
443-632-2048

Abby Glassberg
aglassberg@klnb.com
443-574-1433

100 West Road, Suite 505
Baltimore, MD 21204
klnb.com

NAIklnb

9256 BENDIX ROAD

9256 Bendix Road, Columbia, MD 21045
Howard County

[CLICK TO VIEW PROPERTY WEBSITE](#)

For More Information, Please Contact:

Jesse Schwartzman

jschwartzman@klnb.com
443-632-2067

Brad Berzins, SIOR

bberzins@klnb.com
443-632-2048

Abby Glassberg

aglassberg@klnb.com
443-574-1433

100 West Road, Suite 505
Baltimore, MD 21204

klnb.com

 facebook.com/KLNB

 [@KLNBLLC](https://twitter.com/KLNBLLC)

 linkedin.com/company/klnb

 instagram.com/klnbllc

While we have no reason to doubt the accuracy of any of the information supplied, we cannot, and do not, guarantee its accuracy. All information should be independently verified prior to a purchase or lease of the property. We are not responsible for errors, omissions, misuse, or misinterpretation of information contained herein and make no warranty of any kind, express or implied, with respect to the property or any other matters.

NAI klnb