

405 Victory

±94,624 SF Available

±211,259 SF

Multi-tenant office/warehouse
South San Francisco



Jason Cranston
Managing Director
D 650 480 2100
C 650 333 5173
jason.cranston@am.jll.com
CRE Lic. #01253892



405 Victory

405 Victory is a multi-tenant office/warehouse building located in South San Francisco offering several benefits to its tenants including:



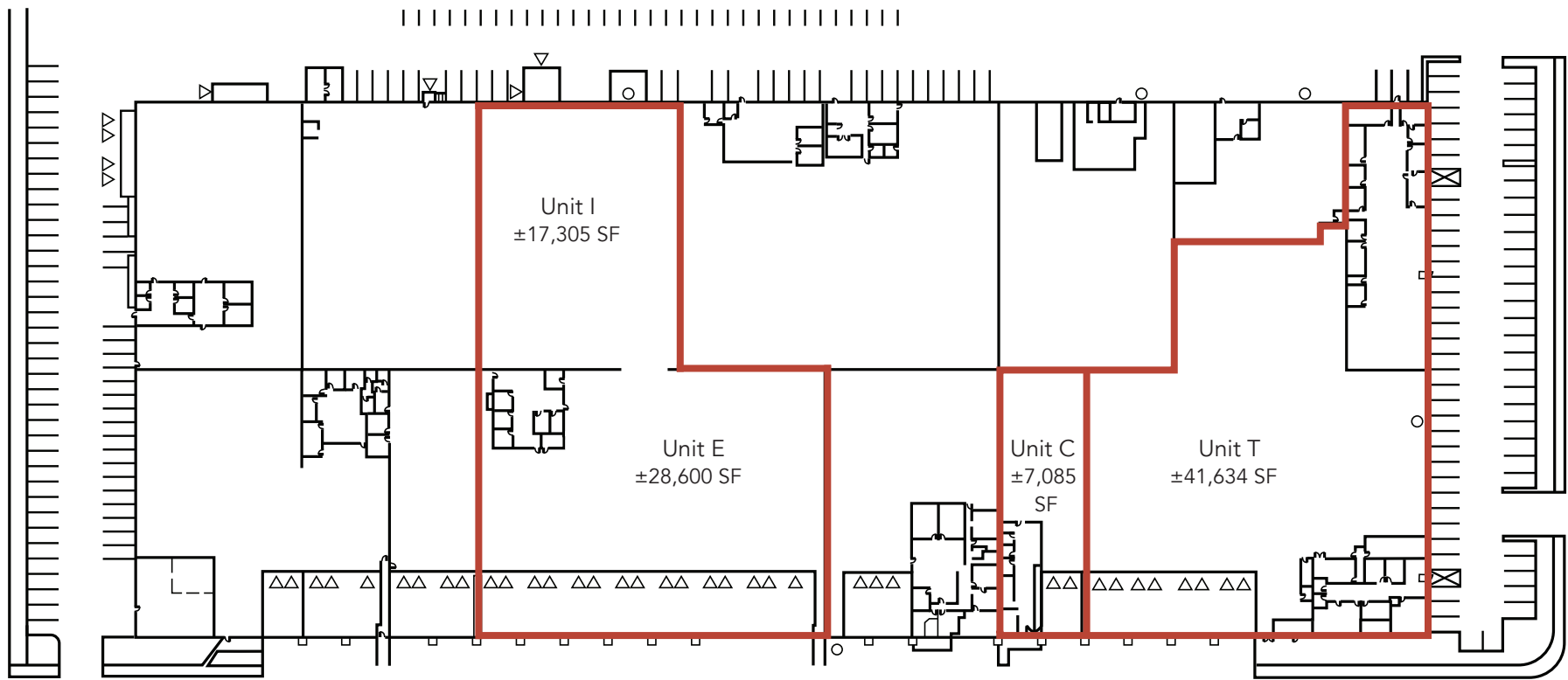
Ideal
transit access



Proximity to Bay Area
population



Industrial specs including
dock-high loading



Property Details

Available

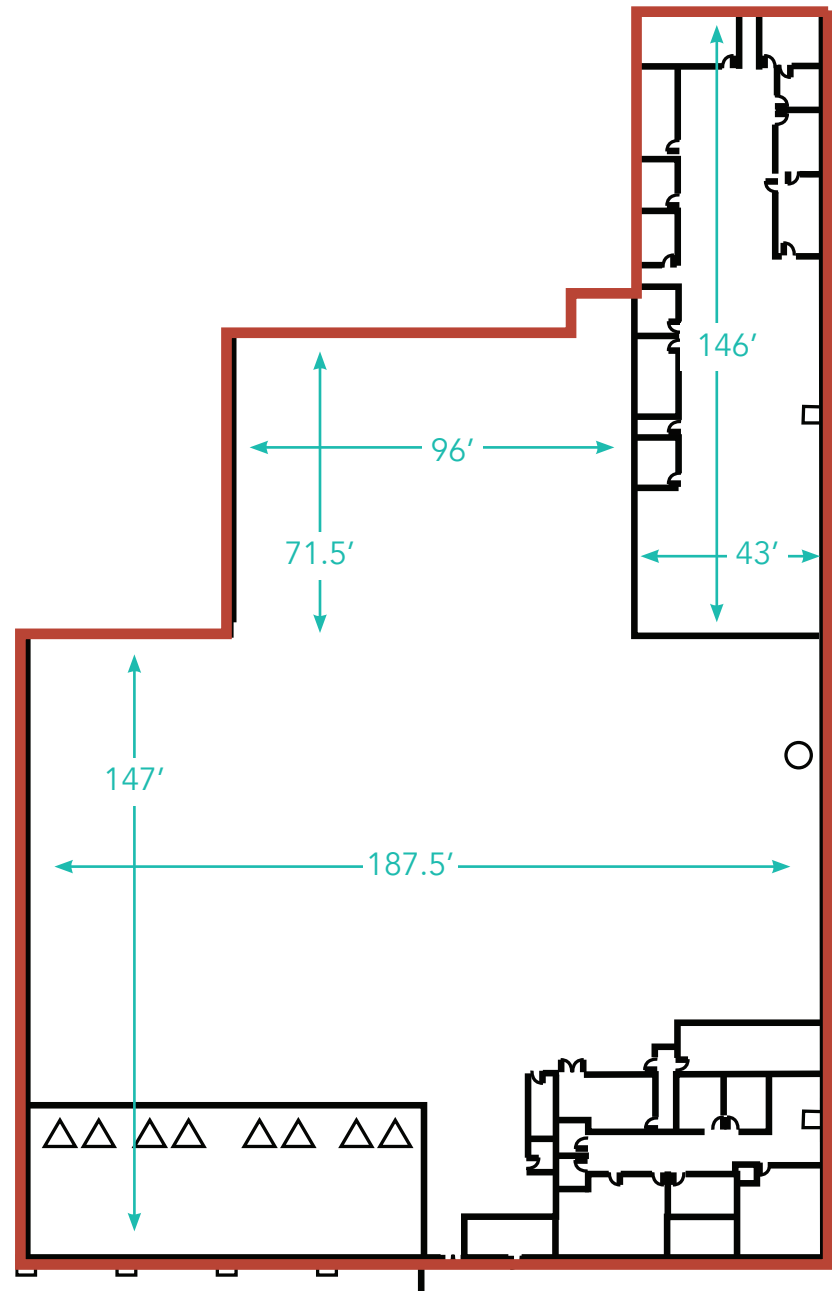
- ±211,259 SF total
- Multi-tenant office/warehouse building
- Dock-high loading
- Grade-level loading
- Clear height: 18' - 26'
- Fire sprinklers
- Heavy power
- Energy-efficient warehouse lights
- Monument signage
- Excellent proximity to Hwy 101, 380, 280, and El Camino Real
- Close to public transportation and SFO International Airport

Suite T

- ±41,634 SF total
- ±9,444 SF office total
 - ±6,278 SF office A
 - ±3,166 SF office B
- Eight (8) dock-high doors
- One (1) grade-level door
- Forty-one (41) unreserved parking stalls
- Available Now
- Rental Rate: Call for Quote

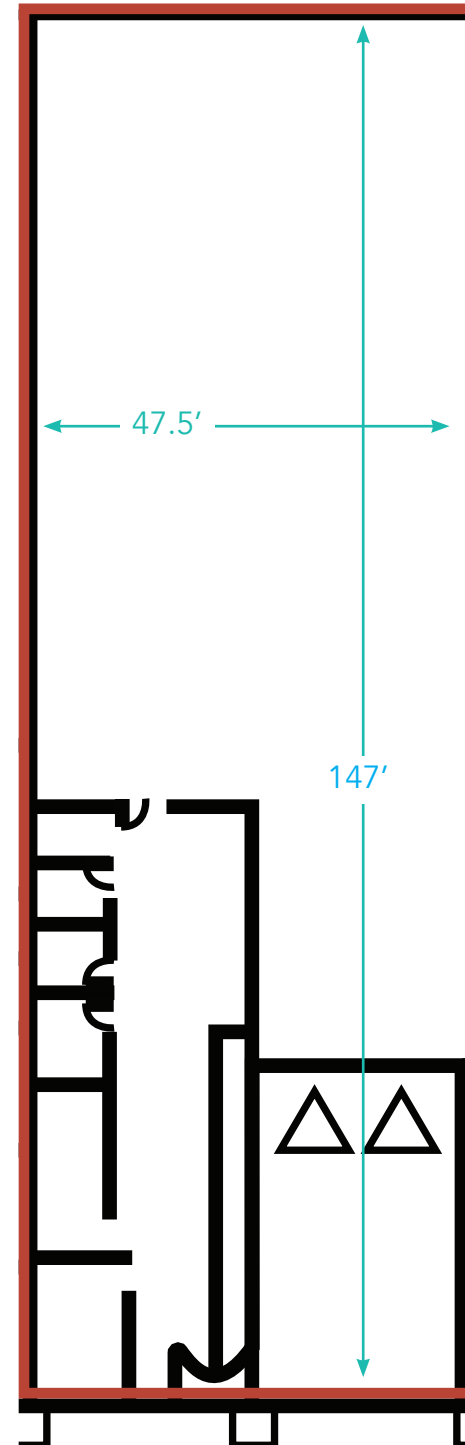
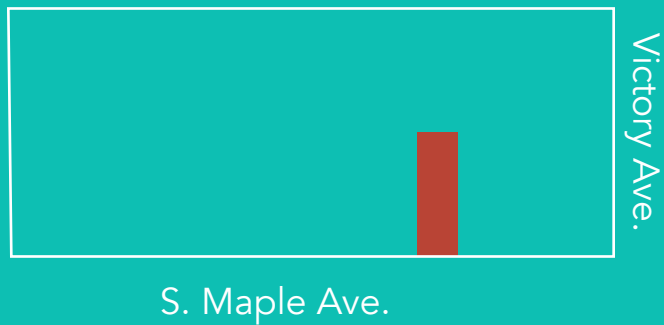


S. Maple Ave.



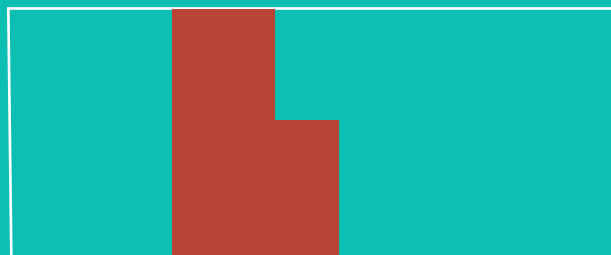
Suite C

- ±7,085 SF total
- ±1,500 SF office
- Two (2) dock-high doors
- Seven (7) unreserved parking stalls
- Available May 1, 2020
- Rental Rate: Call for Quote



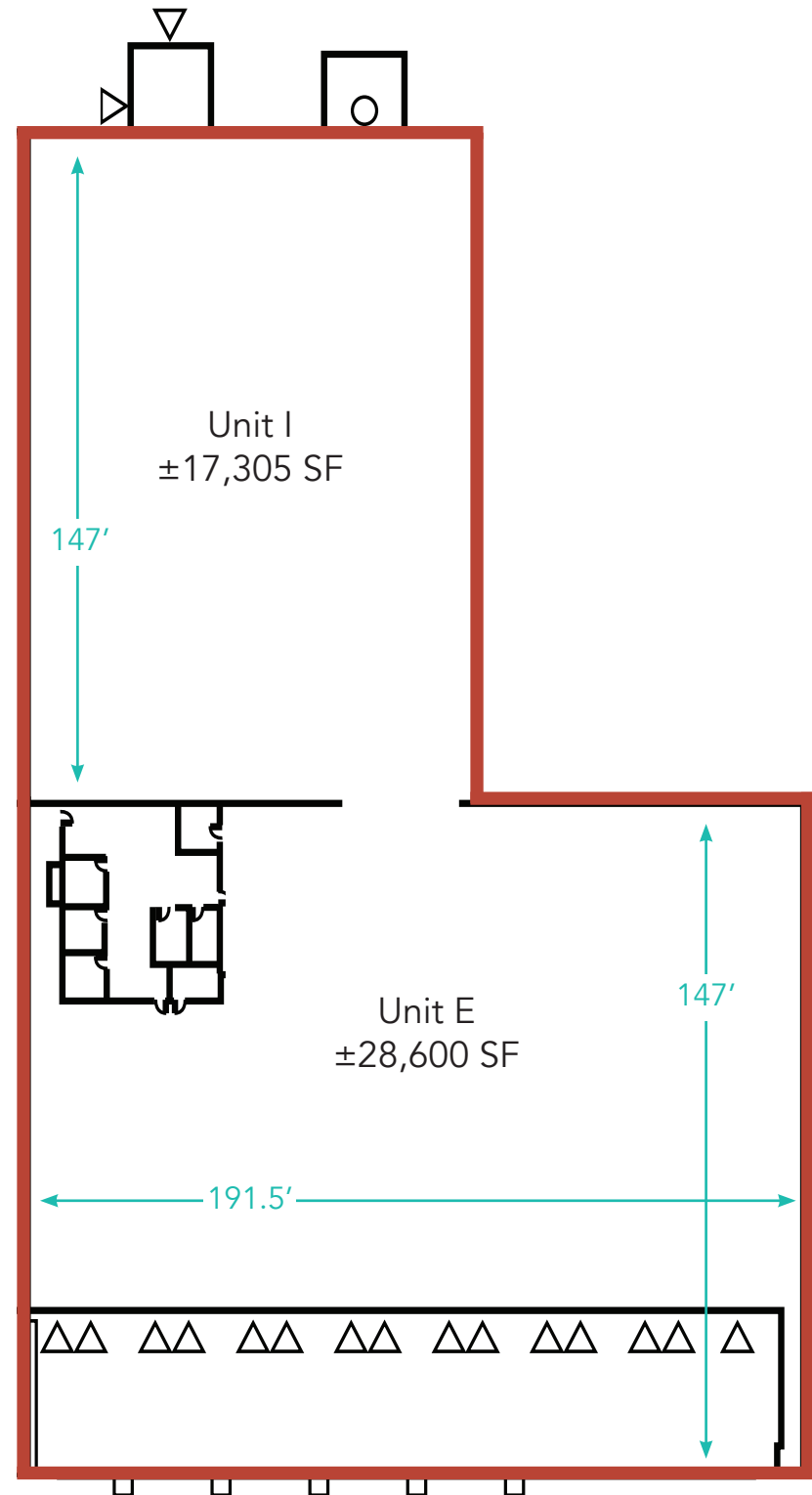
Suite E & I

- ±45,905 SF total (divisible to ±28,600 SF & ±17,305 SF)
- ±1,600 SF office
- Fifteen (15) dock-high doors (Unit E)
- One (1) grade level door (Unit I)
- Insulated and Conditioned Warehouse
- Forty-five (45) unreserved parking stalls
- Available Now
- Rental Rate: Call for Quote



S. Maple Ave.

Victory Ave.



Transit Proximity



405 Victory Ave is ideally located, proximate to several transit access locations including:

- SFO International Airport
- Highways 101, 380, and El Camino Real
- San Bruno BART Station
- San Bruno Caltrain Station
- Tanforan Shopping Center
- Downtown South San Francisco

405 Victory

South San Francisco



Jason Cranston
Managing Director
D 650 480 2100
C 650 333 5173
jason.cranston@am.jll.com
CRE Lic. #01253892