

# For Sale Or Ground Lease

3 Commercial Lots  
6.68 +/- Total Acres  
Rt 1 & NE 10th Street  
Milford, DE 19963

Keith  
Walpole

302-236-7053

keithwalpole@yahoo.com



46 South State Street  
Dover, Delaware 19901

302-674-3400

www.randrcommercialrealty.com



## Property Information

- ⇒ Prime Location off Route 1 in Milford
- ⇒ 6.68 +/- Total Acres
- ⇒ 3 Pad Sites
- ⇒ Sale Prices from \$356,070-\$667,320
- ⇒ Additional contiguous commercial acreage is available
- ⇒ Ground Lease also available

All information contained herein is believed to be accurate, however was obtained from third parties and R & R Commercial Realty, Inc. does not warrant as to the accuracy submitted, subject to changes or modification without notice. Listing Broker represents the sellers interest.

# Commercial Sites for Sale or Lease

Route 1 & 10th Street in Milford, DE



## Property Information

- ⇒ Large commercial parcels off SB Route 1
- ⇒ Centrally located between Dover and Delaware Beaches
- ⇒ City Water and Sewer
- ⇒ Commercial Highway Zoning
- ⇒ 6.68 +/- Total Acres
- ⇒ 3 Pad Sites
- ⇒ Additional contiguous commercial acreage is available
- ⇒ Ground Lease also available
- ⇒ Sale Prices from \$356,070 to \$667,320



R&R Commercial Realty



46 South State Street, Dover, DE 19901



302-674-3400



[www.randrcommercialrealty.com](http://www.randrcommercialrealty.com)

# Up to 3 Pad Sites Available

## Great Location off Route 1 in Milford



R&R Commercial Realty



46 South State Street, Dover, DE 19901



302-674-3400



[www.randrcommercialrealty.com](http://www.randrcommercialrealty.com)

All information contained herein is believed to be accurate, however was obtained from third parties and R & R Commercial Realty, Inc. does not warrant as to the accuracy submitted, subject to changes or modification without notice. Listing Broker represents the sellers interest.

# Commercial Sites for Sale or Lease

Route 1 & 10th Street in Milford, DE

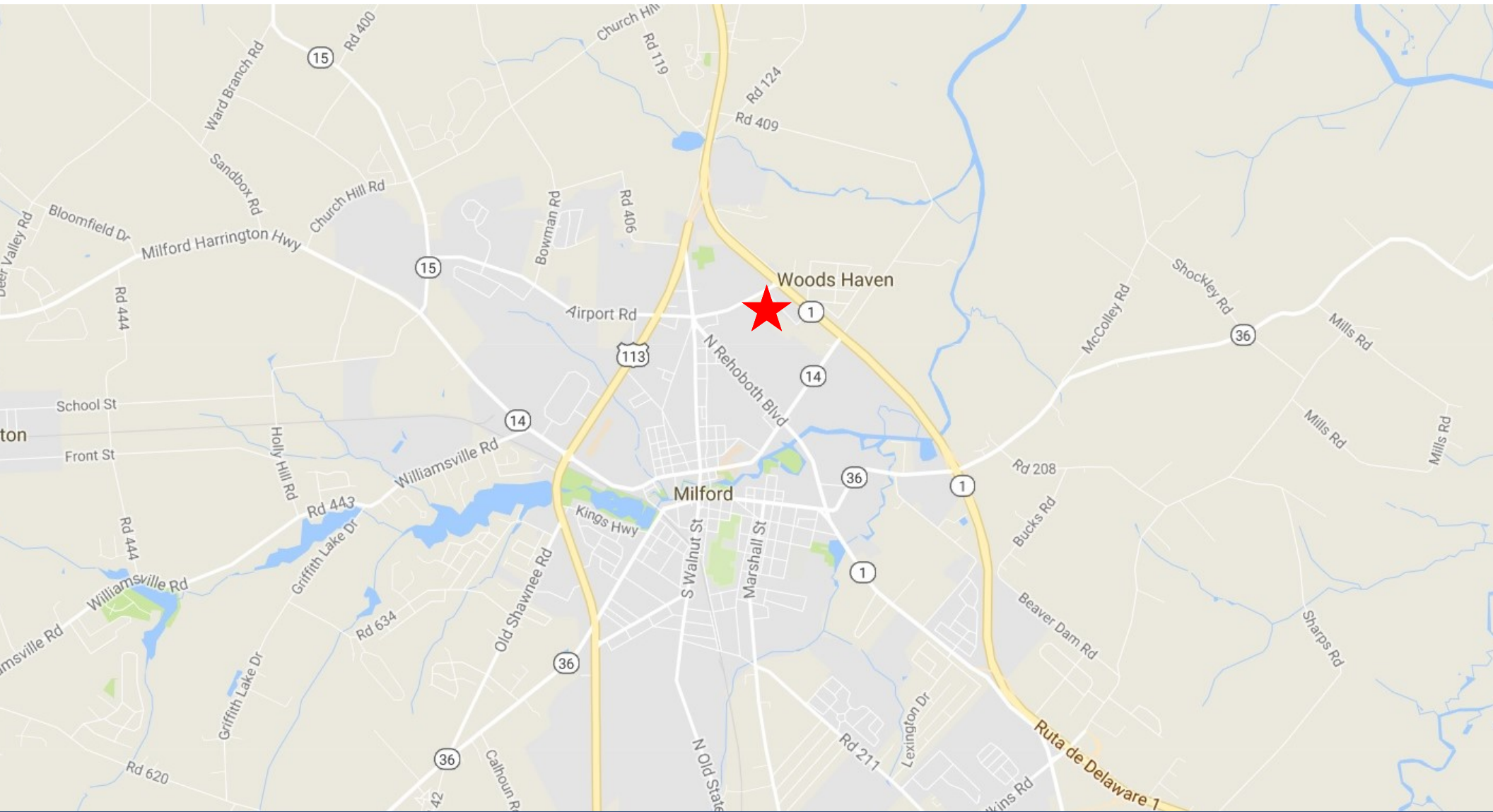


R&R Commercial Realty ♦ 46 South State Street, Dover, DE 19901 ♦ 302-674-3400 ♦ [www.randrcommercialrealty.com](http://www.randrcommercialrealty.com)

All information contained herein is believed to be accurate, however was obtained from third parties and R & R Commercial Realty, Inc. does not warrant as to the accuracy submitted, subject to changes or modification without notice. Listing Broker represents the sellers interest.

# Pad Sites Available

## Route 1 & 10th Street in Milford, DE



R&R Commercial Realty ◆ 46 South State Street, Dover, DE 19901 ◆ 302-674-3400 ◆ [www.randrcommercialrealty.com](http://www.randrcommercialrealty.com)

All information contained herein is believed to be accurate, however was obtained from third parties and R & R Commercial Realty, Inc. does not warrant as to the accuracy submitted, subject to changes or modification without notice. Listing Broker represents the sellers interest.

# Commercial Sites Available

Great Location Off Route 1 in Milford, DE

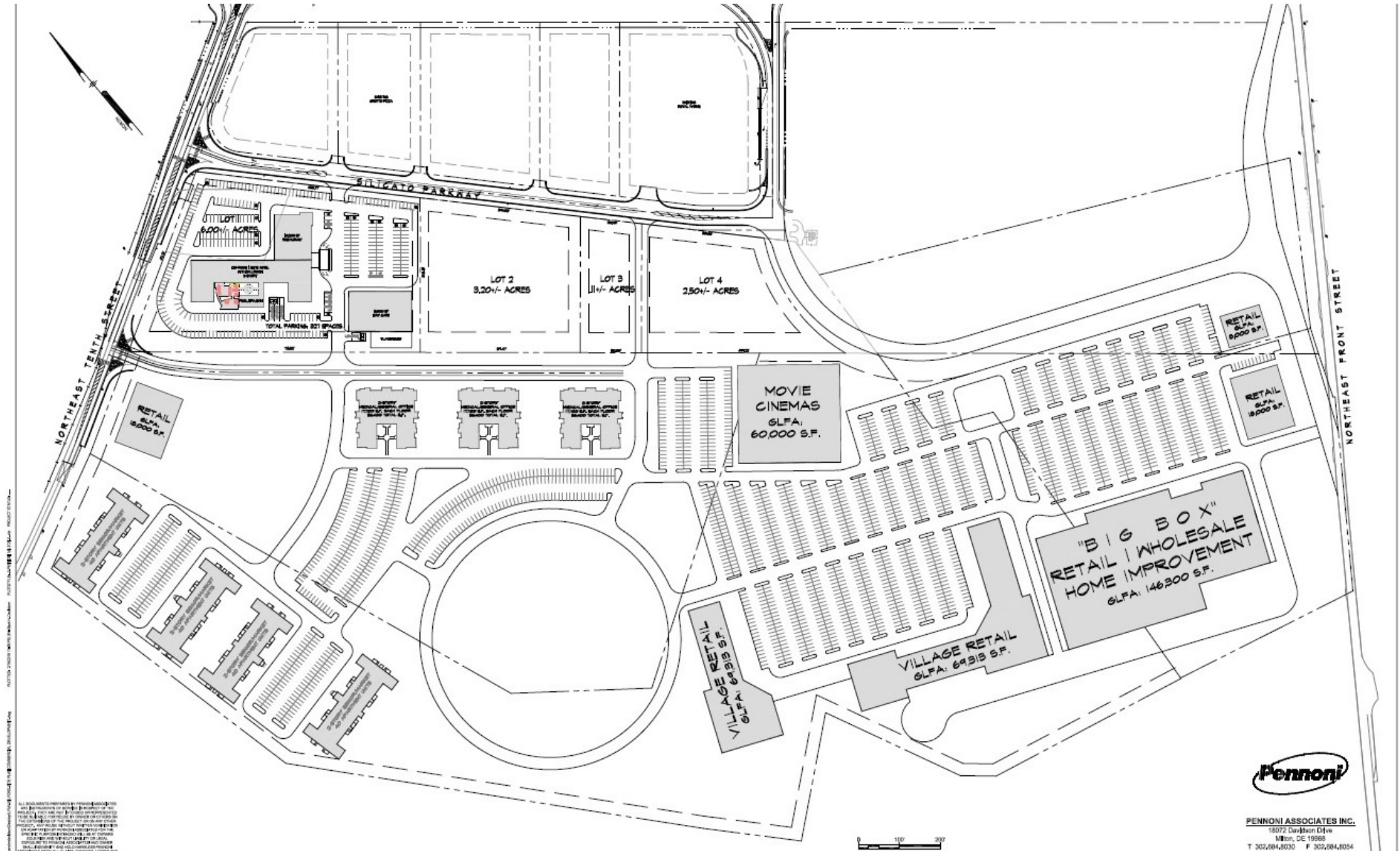


R&R Commercial Realty ♦ 46 South State Street, Dover, DE 19901 ♦ 302-674-3400 ♦ [www.randrcommercialrealty.com](http://www.randrcommercialrealty.com)

All information contained herein is believed to be accurate, however was obtained from third parties and R & R Commercial Realty, Inc. does not warrant as to the accuracy submitted, subject to changes or modification without notice. Listing Broker represents the sellers interest.

# Route 1, Milford

## Proposed Site Plan



R&R Commercial Realty ♦ 46 South State Street, Dover, DE 19901 ♦ 302-674-3400 ♦ [www.randcommercialrealty.com](http://www.randcommercialrealty.com)

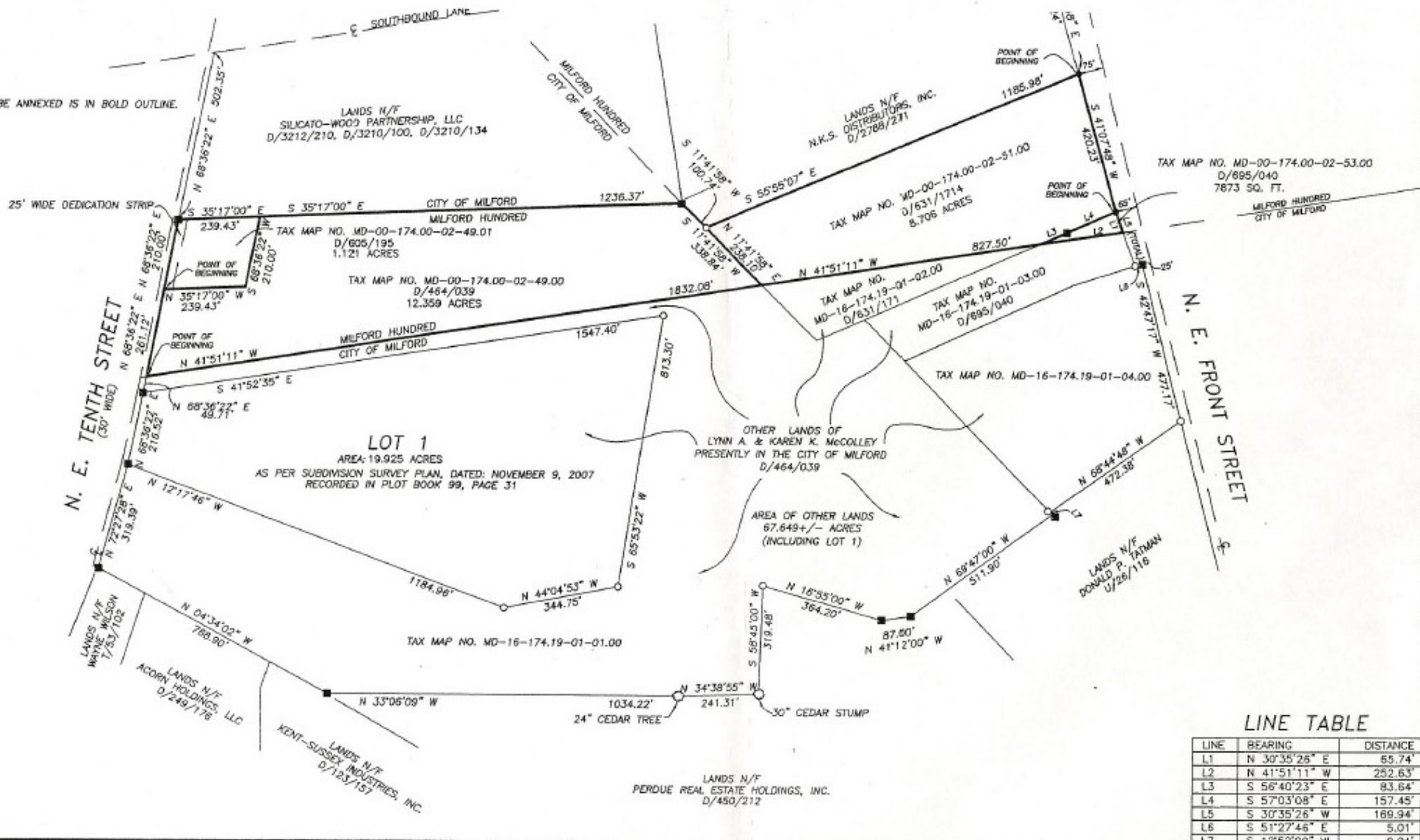
All information contained herein is believed to be accurate, however was obtained from third parties and R & R Commercial Realty, Inc. does not warrant as to the accuracy submitted, subject to changes or modification without notice. Listing Broker represents the sellers interest.

# Route 1, Milford

## Site Survey



NOTE: AREA TO BE ANNEXED IS IN BOLD OUTLINE.



R&R Commercial Realty ♦ 46 South State Street, Dover, DE 19901 ♦ 302-674-3400 ♦ www.randcommercialrealty.com

All information contained herein is believed to be accurate, however was obtained from third parties and R & R Commercial Realty, Inc. does not warrant as to the accuracy submitted, subject to changes or modification without notice. Listing Broker represents the sellers interest.